

OREGON STATE-LEVEL DOCUMENTATION FIRST GERMAN BAPTIST CHURCH AND PARSONAGE

(Evergreen Presbyterian Church and Parsonage)

905 and 925 NE Cottage Street, Salem, Marion County, Oregon



First German Baptist Church, shortly after the church renamed its congregation Bethel Baptist, 1938. Image courtesy of Evergreen Church.

Historian(s):

Libby Provost, Kayla Blackman, and Brooke Best

Historical Research Associates, Inc.

1825 SE 7th Ave.

Portland, OR 97214

Completed: May 24, 2022

Submitted to Library: September, 2022

OREGON STATE-LEVEL DOCUMENTATION

FIRST GERMAN BAPTIST CHURCH AND PARSONAGE (Evergreen Presbyterian Church and Parsonage)

Location: 905 and 925 NE Cottage Street, Salem, Marion County, Oregon
USGS Topographic Quad: Salem West
Township 7 South, Range 3 West, Section 23

GPS
Coordinates: Latitude: 44.94768624224126, Longitude: -123.02934644764571
This coordinate represents the center of the First German Baptist Church property. Obtained May 12, 2022, using Google Earth Pro (©2020), World Geodetic System (WGS) 84.

Present Owner: DevNW

Present Use: Unused/vacant

Significance: The First German Baptist Church, built in 1928, is a Gothic Revival-style church designed by Salem architect Lyle P. Bartholomew. The associated parsonage, built ca. 1910, served as pastors' housing until 1957, when it became an annex space used for Sunday school and other church-sponsored activities. From 1928 to 2022, the church played an active role in the community and served as a place of worship, with various denominations occupying the building.

Historian(s): Libby Provost, Kayla Blackman, and Brooke Best
Historical Research Associates, Inc.
1825 SE 7th Ave.
Portland, OR 97214

Submitted: May 24, 2022

FIRST GERMAN BAPTIST CHURCH AND PARSONAGE
(Evergreen Presbyterian Church and Parsonage)

Project Information

The HOME Investment Partnerships Program with DevNW and the City of Salem (City) are proposing to renovate the First German Baptist Church and parsonage, commonly known as Evergreen Presbyterian Church and parsonage, at 905 Cottage St. NE and 925 Cottage St. NE, Salem, Oregon. The undertaking will be financed, in part, with funds from the U.S. Department of Housing and Urban Development (HUD) and is therefore subject to Section 106 of the National Historic Preservation Act (NHPA). The City and the Oregon State Historic Preservation Office (SHPO) entered a Memorandum of Agreement (MOA, SHPO Case Number 20-0775) to mitigate for adverse effects resulting from the undertaking. Stipulation 1.a. of the MOA required the church and associated parsonage be recorded following Oregon State-Level Documentation (OSLD) standards. The OSLD follows the format of the Historic American Building Survey (HABS), is intended for recordation of locally significant resources, and is typically housed in local repositories. This OSLD documentation includes a history of the property, physical description of the buildings, bibliography, U.S. Geological Survey (USGS) map with the location of the property marked, scale site plan, scale floor plans of the church and parsonage, archival photograph of the buildings, and relevant archival materials.

Historical Research Associates, Inc. (HRA), architectural historian Libby Provost conducted field survey and co-authored the report with HRA architectural historian Brooke Best and historian Kayla Blackman.

Architectural Information

The First German Baptist Church and parsonage are located at 905 and 925 Cottage St. NE, respectively, in the Grant Neighborhood in Salem, Marion County, Oregon. The church is on tax lot 073W23CB14300 and the parsonage at 073W23CB14301, each sized 0.15 acre.¹ The area is characterized by early to mid-twentieth-century residential development across relatively flat terrain. Platted street, block, and lot shapes are generally oriented north–south and feature rectilinear street grids, paved sidewalks, and tree-lined streetscapes.

The First German Baptist Church is situated just south of the parsonage. North of the parcel are residential buildings, Cottage St. is to the east, D St. bounds the church to the south, and a parking lot and rear alley serves as the western boundary. Both buildings were previously recorded in the Oregon Historic Sites Database (OHSD) under the name Bethel Baptist Church and Parsonage and were recorded as eligible for listing in the National Register of Historic Places (NRHP).

A. First German Baptist Church

The First German Baptist Church (905 Cottage St. NE) is situated at the northwest corner of Cottage and D Sts. NE. The church fronts to the east toward Cottage St. and the south towards D St. The building is 6,896 square feet (sq ft) and is oriented along an east–west axis.

Constructed in 1928, the First German Baptist Church was designed by Salem-based architect Lyle P. Bartholomew. The Late Gothic Revival-style church is characterized by its brick

¹ 925 Cottage St. NE Salem, OR., Marion County Assessor's Property Records, accessed March 2022; 905 Cottage St. NE Salem, OR Marion County Assessor's Property Records, accessed March 2022.

FIRST GERMAN BAPTIST CHURCH AND PARSONAGE
(Evergreen Presbyterian Church and Parsonage)

exterior, projecting pilasters and end bays, and square and pointed-arch fenestration with brick drip-mold. The two-story building sits on a raised, reinforced-concrete foundation with a full basement and is rectangular in plan, measuring 44' x 66'. The building's primary walls are 12" thick and are constructed of hollow clay tile clad with cream-colored brick in a running bond pattern. The building is accentuated by rusticated, pink brick quoins. Most of the original wood-frame windows are extant and include a combination of four-light and six-light windows, and groupings of nine-light pointed-arch (lancet) windows flanked by six-light windows with clear textured glass. Tall arched transoms above the entries feature vertical pane wood-frame sash. Fenestration at the first and second floor are framed by slightly projecting, cream-colored brick sills and square or arched drip-mold finished in pink brick. The church is capped by a flat roof with parapet. The brick parapet features pink brick ornamentation and triangular pediments at the projecting end bays. Below the parapet is a painted cornice that extends across the building's elevations. The roof structure is supported by brick piers.² The church retains much of its historic character from 1928, including its original fenestration, building massing, brick cladding, symmetrical layout, and architectural ornamentation.

The primary (south) elevation, which faces D St., is a five-bay composition featuring brick pilasters at the central bays and projecting end bays. The raised foundation contains grouped four-light and six-light windows in the three central bays. The end bays (east and west) contain double-door entries that are approached by a set of concrete stairs with no railings. Both entries have metal doors with glass inserts in the upper portion and are surmounted by pointed-arch transoms with slightly projecting pink brick drip-mold. Above the entrances, at the second-floor level, are grouped six-light windows with square drip-mold. The three central bays are divided by brick pilasters and feature large, nine-light lancet windows flanked by narrow six-light sash with arched upper panes. A marble plaque on the facade's east corner foundation has an inscription that reads "Bethel Baptist Church – 1928."

The east elevation, which serves as a secondary public facade, features three symmetrical bays with an entrance at the south end. Like the primary (south) facade, the double entry is capped by a tall, pointed-arch transom with brick drip-mold. The entry is reached by a set of concrete stairs with a tubular metal railing at the center and sides. The entrance contains double doors with raised panels in the lower portion and six-light sash above. To the north of the entry, at the ground level, are six four-light windows capped by square concrete drip-mold. The first and second floors contain grouped, six-light awning windows with brick sills and square drip-mold in the central and northern bays. The first-floor windows are slightly larger with arched sash in the upper portion.

The west elevation fronting the parking lot and alley has two metal doors at the basement level, accessed by a concrete stairwell at the north end. A tubular metal railing is located at the upper edge of the stairwell. Other openings at basement level include four-light and six-light, fixed, wood-frame windows; two of the window openings have been infilled. The first floor has a combination of single and paired six-light, wood-frame windows with pointed-arch sash in the upper portion. At the second floor are two paired windows containing a combination of single

² "German Baptist Church Ready for Committee," *Oregon Statesman*, October 14, 1928.

FIRST GERMAN BAPTIST CHURCH AND PARSONAGE
(Evergreen Presbyterian Church and Parsonage)

and six-light fixed sash, and a one-over-one double-hung sash. The first- and second-floor windows are finished with light cream-colored brick sills and pink brick drip-mold. An exterior brick chimney is centered on the elevation.

Like the primary facade, the rear (north) elevation is defined by a five-bay composition featuring three central bays divided by brick pilasters and projecting end bays. Windows at the raised ground level consist of four-light and six-light fixed windows with square concrete drip-mold. The three center bays feature tall nine-light lancet windows flanked by six-light sash with arched upper panes. The projecting north bay has a central, elevated entry that is accessed by a wood staircase with a simple wood railing. The door is sheltered by a hooded porch roof supported by wood brackets. Flanking the entry are six-light windows with arched upper sash. Centered above the entry, at the second-floor level, are three grouped windows containing a central double-hung sash flanked by fixed, single-light sash. At the south bay are groupings of tall six-light windows centered at the first floor, with smaller six-light windows at the second floor.

On the interior, the church includes a partially above-grade lower level, which is reached by a set of stairwells at the southeast and southwest corners. The basement contains a central open space that served as an assembly/dining hall, with classrooms along the east and south sides. Restrooms occupy the southwest end, and the kitchen is positioned in the northwest corner. A fireproof boiler room is located in between the kitchen and restrooms, featuring clay tile walls. Two doors on the west wall provide access to the exterior stairwell, which leads to the rear parking area. The basement contains a mix of solid metal and paneled wood doors with some original metal hardware.

The main floor of the church has three primary parts: the main sanctuary (center), pulpit/choir/baptistry (west end), and rear pew seating (east end). Entry vestibules are located at the southeast and southwest corners. The southeast vestibule serves as the primary entrance, featuring a lower-level carpeted entry and wide, carpeted stairs with a wood railing. The stairs lead to an upper landing with double wood doors that enter the main worship space. Another staircase to the north provides access to the mezzanine level. The southwest vestibule enters a small hallway containing a narrow, carpeted stairwell, connecting to the raised pulpit/choir area.

The main sanctuary is characterized as a tall, open space featuring wood floors and tall, lancet windows (described above) on the north and south walls. At the time of survey, the sanctuary contained upholstered metal chairs arranged in rows, with a central aisle. The ceiling for the sanctuary is slightly curved on the sides. The light fixtures consist of suspended pendant lights with glass shades, which are spaced in a single row along the north and south side. Semi-flush ceiling fans with glass globes are located at the midsection.

The pulpit area for the sanctuary is a curved, shallow platform with a short flight of stairs at the north and east ends. The pulpit has three arched openings supported by two square columns, creating space for the choir. The wood pulpit is positioned slightly off-center at the front of the curved platform. Two wood doors at the back of the pulpit provide access to two small, narrow rooms along the west wall, housing space for robing rooms, orchestra and choir, and the pastor's study. A door on the north wall leads to the exterior staircase at the northwest corner of the church. The lower ceiling in the pulpit area features semi-flush light fixtures with glass globes

FIRST GERMAN BAPTIST CHURCH AND PARSONAGE
(Evergreen Presbyterian Church and Parsonage)

and flush-mount fixtures with bare bulbs. A second-floor level above the pulpit contains additional rooms for offices and storage. The upper rooms are accessed by a narrow, enclosed staircase at the upper level (southwest corner). The stairs are carpeted with no hand railing. The rear (east) seating area contains upholstered wood pews. Above this, overlooking the main sanctuary is a mezzanine with a three-tier seating area on the north side of the staircase. A low wall with a metal railing extends along the balcony's west side, allowing view of the sanctuary. A smaller area at the south end is used as ancillary space for the sound system. It is enclosed by a low wall on the north and west sides. The floors are carpeted. Lighting consists of flush-mount brass fixtures with three glass shades.

B. Parsonage

Directly north of the church is the parsonage, fronting east towards Cottage St. NE. A fenced-in yard and rear alley serves as the western boundary to the parcel. The existing building measures 2,022 sq ft and is oriented along a north-south axis.³

Constructed sometime between 1901 and 1910, the parsonage at 925 Cottage St. NE is an early twentieth-century Queen Anne vernacular residence characterized by its asymmetrical facade. The facade incorporates a one-story front porch and bay window, spindlework detailing, and wide band horizontal wood siding. The one-and-one-half-story, wood-frame former residence has a T-shape plan and sits on a raised-concrete foundation with a full basement. Windows include a combination of single and paired one-over-one, double-hung, wood-frame sash. The building is capped by a cross-gabled roof sheathed with asphalt shingles. The gable roof features a simple projecting wood cornice with eave returns. The parsonage exterior retains much of its historic integrity from its period of construction, including its T-shaped footprint, cladding, fenestration, and architectural ornamentation.

The main entry is positioned on the east elevation's north side, where the one-story flat roof porch is located. The porch features two turned porch supports with a low wood railing and simple spindlework at the top of the posts. A concrete walkway extends from the sidewalk (along Cottage St. NE) to a set of concrete steps that lead to the raised porch area. The bottom step near the sidewalk is engraved with "Baptist Parsonage." The front entrance contains a solid wood door with contemporary hardware; the original door is no longer intact. To the south of the porch entry, on the projecting front gable is a one-story, hipped-roof bay window with paired double-hung sash centered above at the second floor. The projecting bay rests on a concrete foundation, is sheathed in horizontal wood clapboard along the base, and features paired double-hung sash on the main (east) face and a narrow, double-hung sash on the north and south face. Decorative wood scrollwork embellishes the main gable peak.

The north elevation features a large cross gable at the west side, with a projecting one-story side entry at the northwest corner. The side entry, which is accessed by a set of wood steps with a simple wood railing, contains a three-paneled wood door with a single pane of glass in the upper portion. The projecting side gable contains a single three-light wood-sash window at the foundation; a single double-hung window at the first floor (west side), and a slightly higher

³ Assessor's Property Records, Marion County, Oregon.

FIRST GERMAN BAPTIST CHURCH AND PARSONAGE
(Evergreen Presbyterian Church and Parsonage)

window at the east side (indicating the staircase landing). A single double-hung window is centered in the second-floor gable.

The rear (west) elevation features two lower, one-story wing extensions: a hipped-roof wing (south side) and a shed roof sunroom (northwest corner). The hipped-roof wing contains single and paired one-over-one, double-hung windows, while the sunroom contains a bank of multi-light, fixed wood sash. Two double-hung windows are positioned on the main gable at the second floor. An exterior concrete staircase along the foundation provides access to the basement level.

The south elevation contains three-light wood-frame windows at the foundation level and single and paired double-hung windows at the first floor. A single double-hung, wood-frame window is positioned on the one-story wing extension at the west end.

The building interior has a crosswing layout, including a front entry vestibule at the northeast corner and the main living spaces (living room and dining room) at the south side. The one-story rear (west) extensions contain a bathroom, kitchen, and sunroom space. The basement level, which is accessed by a set of exterior stairs at the west side and an interior staircase at the northwest corner, contains a large open area along the south side and two smaller rooms at the north side separated with wood-frame partition walls. The basement floors and exterior walls are poured concrete. Ceilings in the main (south) portion are exposed wood rafters, while the north portion are partially finished with sheetrock. A paneled metal door positioned on the south end of the rear (west) wall provides access to the exterior stairwell. To the north is an interior staircase that leads to the first-floor sunroom space at the northwest corner. The stairs consist of a wood stringer with open wood treads at the lower level and enclosed risers at the upper portion. Character-defining features of the main floor and second floor include wood baseboards, wood doorways and window trim with bulls-eye molding, and paneled wood doors. Some of the original door hardware is intact. None of the original light fixtures remain.

At the first floor, a steep, narrow switchback staircase at the front (northeast) entry vestibule leads to the second-floor level. It features its original, unpainted, turned-wood banister. The stair treads are covered in carpet and newer wood paneling is located along the lower stairwell's east wall. A window is located at the staircase landing on the north wall.

South of the entry is an open living space, with an arched partial wall bisecting the living room from the dining room. The west side of the main floor, beyond the dining room, includes a bathroom, kitchen, and built-in cabinet. The bathroom and kitchen maintain no original features. North of the kitchen is an enclosed landing with wood floor, with stairs extending to the basement. A bedroom on the north side of the main floor opens into the dining room. The living room, kitchen, and bedroom floors are carpeted. The bathroom flooring appears to be laminate.

The second floor contains a small hallway at the top of the staircase that leads to three rooms, including two at the south side and one at the northwest side. A small hallway closet is positioned on the east wall and contains its original paneled wood door and brass hardware. The rooms feature painted wood baseboards, wood door and window trim with bulls-eye molding, and paneled wood doors. The southwest room features its original fireplace partially intact (west

FIRST GERMAN BAPTIST CHURCH AND PARSONAGE
(Evergreen Presbyterian Church and Parsonage)

wall) and shallow built-in cabinets with wood-paneled doors (south wall). Floors are finished in a combination of carpeting (southeast room), linoleum (southwest room), and painted wood (northwest room).

Building History and Context

The properties at 905 and 925 Cottage St. are located in the ancestral homelands of the Kalapuya peoples. Kalapuya peoples have lived here since time immemorial. Non-Natives began exploring and establishing homes at a time when Kalapuyan populations had been decimated by European-introduced diseases. As non-Native populations grew, so did tensions between Native and non-Native peoples.⁴ Some of these resulted in significant loss of life, and the U.S. government looked to treaties and the creation of reservations to resolve conflicts. In 1850, the federal government enacted the Oregon Donation Land Claim Act, allowing non-Natives to claim lands later deemed to be within the territories ceded to the government through treaties.⁵ The U.S. government ratified a treaty with the Kalapuya in 1855, codifying a strategy of displacement and dispossession in which the Kalapuya ceded the Willamette Valley.⁶ The City of Salem incorporated in 1857, becoming a center of commerce and emerging as the Oregon state capital in 1864.⁷

The federal government issued a claim on this parcel to John B. and Helen C. McClane in 1860.⁸ Parts of downtown Salem were well established by this time and, just north of the subject area, North Salem was platted by 1871.⁹ An 1878 map shows the subject area was still part of the McClane claim at that time.¹⁰ The subject parcel and those adjacent to it were platted as part of Boises 2nd Addition at an unknown date.¹¹

In 1891, the First German Baptist Church congregation purchased two lots at the corner of Cottage and D Sts. By 1892, they had constructed a sanctuary building on the site.¹² The congregation built the parsonage house sometime around the turn of the century. While church records and a 1978 historic building survey indicate the build date as 1901, Marion County tax

⁴ Henry Zenk, "Kalapuyan Peoples," Oregon Encyclopedia, accessed May 13, 2022, https://www.oregonencyclopedia.org/articles/kalapuyan_peoples/#.Yn1FGojMKUk.

⁵ William G. Robbins, "Oregon Donation Land Law," Oregon Encyclopedia, accessed May 13, 2022, https://www.oregonencyclopedia.org/articles/oregon_donation_land_act/#.Yn1FUejMKUk.

⁶ Melinda Jette, "Kalapuya Treaty," Oregon Encyclopedia, accessed May 13, 2022, https://www.oregonencyclopedia.org/articles/kalapuya_treaty/#.Yn1F9-jMKUk.

⁷ David Lewis, "City of Salem," Oregon Encyclopedia, accessed May 13, 2022, https://www.oregonencyclopedia.org/articles/salem_city_of/#.Yn1Ge-jMKUk.

⁸ U.S. Department of the Interior, Bureau of Land Management, General Land Office Records, OROCAA 007372.

⁹ Kirsten Straus and Sean Edging, *The Houses of Grant Neighborhood* (City of Salem Historic Planning Division, 2015), 6.

¹⁰ Edgar Williams and Company, "Salem City, Marion, Lebanon, Jefferson," 1878, <http://www.historicmapworks.com/Map/US/48027/Salem+City++Marion++Lebanon++Jefferson/Marion+and+Linn+Counties+1878/Oregon/>

¹¹ Marion County Assessor's Property Records, 07 3W 23CB, Salem, accessed March 2022, <https://gis.co.marion.or.us/images/assessor/073W23CB.pdf>.

¹² "Church Dedication," *Capital Journal*, May 7, 1892, 3.

FIRST GERMAN BAPTIST CHURCH AND PARSONAGE (Evergreen Presbyterian Church and Parsonage)

assessor data indicate the First German Baptist congregation built the parsonage in 1910.¹³ Church records indicate the parsonage construction contract cost \$1,125.¹⁴ No records were available to indicate the architect or builder of the parsonage building or original church structure.¹⁵

The First German Baptist Church congregation built the first sanctuary when the surrounding area was not yet highly developed. Though streetcars ran along nearby commercial corridors in the 1890s, the neighborhood's roads were unpaved until approximately 1907.¹⁶ Architectural survey and mapping data indicates that people constructed most residences in the blocks closest to the church in the 1910s and 1920s.¹⁷ In 1911, developers plotted the Oaks Addition immediately east of the church buildings, laying the foundation for what would come to be known as the Grant Neighborhood. The Grant Neighborhood grew steadily in the 1920s, fueled by the broader growth of north Salem.¹⁸

In ca. 1927, the congregation sold the original wooden church; the building was dismantled and moved approximately 0.75 miles to the corner of Academy St. and Hazel St. to serve as the sanctuary for Immanuel Baptist Church.¹⁹ In 1928, the First German Baptist Church built a new, brick sanctuary building, the subject building, on the same parcel as their original church. The building cost between \$15,000 and \$18,000 and was financed, in part, by the sale of the original sanctuary building.²⁰ Area architect Lyle Pascoe Bartholomew designed the new sanctuary. Fred A. Erixon served as the contractor on the project. Pastor Gustave Rutsch oversaw the dedication on September 30, 1928. The *Oregon Statesman* reported the building could accommodate 600 people, boasted Sunday school classrooms and dining facilities, and featured an “acoustically perfect” auditorium.²¹

¹³ Riviera Baptist Church, “Bicentennial Review,” July 4, 1976, 3, Willamette Heritage Center; Bob Koval, “925 Cottage Street NE, Salem, Oregon, 1978,” Salem Public Library, Special Collections, accessed May 13, 2022, <https://www.salemhistory.net/digital/collection/specialcol/id/430/rec/111>; 925 Cottage St. NE Salem, OR., Marion County Assessor's Property Records, accessed March 2022.

¹⁴ Riviera Baptist Church, “Bicentennial Review,” 3.

¹⁵ A survey and inventory from 1980 indicates the original First German Baptist Church building was constructed in the 1860s and moved from 4th and Cottage St. to the corner of D and Cottage St. ca. 1890. This appears to be incorrect, as a contemporary newspaper article describes the church as “new” in 1892. “Church Dedication,” 3; Mark Siegel, State of Oregon Inventory of Historic Properties, Immanuel [sic] Baptist Church, Oregon Historic Sites Database, 1997 Hazel NE, Salem, accessed May 12, 2022, http://heritagedata.prd.state.or.us/historic/index.cfm?do=v.dsp_siteSummary&resultDisplay=46321.

¹⁶ Straus and Edging, *The Houses of Grant Neighborhood*, 7.

¹⁷ Brooke Best and Libby Provost, Grant Neighborhood Reconnaissance-Level Survey Update, 2022, on file at City of Salem; Straus and Edging, *The Houses of Grant Neighborhood*, 10.

¹⁸ Straus and Edging, *The Houses of Grant Neighborhood*, 7; Advertisement, Oaks Addition, *Daily Capital Journal*, December 16, 1911.

¹⁹ Virginia Green, “Immanuel Baptist Church, 1997 Hazel Avenue NE in Highland (LL),” *Shine on Salem*, accessed May 13, 2022, <https://shineonsalem.org/immanuel-baptist-church-1997-hazel-avenue-ne-ll/>

²⁰ Riviera Baptist Church, “Bicentennial Review,” 3.

²¹ “German Baptist Church Ready for Committee,” *Oregon Statesman*, October 14, 1928.

FIRST GERMAN BAPTIST CHURCH AND PARSONAGE (Evergreen Presbyterian Church and Parsonage)

Lyle Pascoe Bartholomew

Lyle P. Bartholomew was a graduate of Willamette University and the University of Oregon School of Architecture. Bartholomew established his practice in Salem in 1927 and worked there for nearly 50 years.²² A locally significant architect, his works included the Capitol Journal Building (1934), the Old West Salem City Hall (West Salem Library, 1936), Beth Shalom Synagogue, and multiple buildings at Fairview Training Center, Hillcrest Youth Correctional Facility, and the Oregon State Hospital.²³

Congregations and Community

Many of the early congregation members immigrated from German-speaking countries or were descendants of those who had. The sixteen charter members of the First German Baptist Church all spoke German, and the congregation offered many of its initial worship services and study classes in German.²⁴ First German Baptist was one of several German-speaking churches in Salem, including the German Lutheran Reformed, German Lutheran Church, and German Methodist Episcopal Church.²⁵ Preservation of German heritage was also promoted by the Salem German Society, which organized monthly meetings in the 1910s to promote German language and culture, hosting community celebrations such as parades, pageants, and German musical performances.²⁶

First German Baptist Pastor Gustave W. Rutsch (pastor from 1927–1935) immigrated from Poland and reported his first language as German to the U.S. Census Bureau in 1930.²⁷ Other pastors of the congregation included John Fechter (1890–1894), C. E. Kliewer (1894–1898), Gustav Schunke (1898–1900, 1906–1916), F. Herrmann (1901–1906), Friedrich Petereit (1916–1919), John Lucas (1919–1927), John F. Olthoff (1935–1946), and Rudolph Wolke (1948–1955).²⁸

In 1939, the First German Baptist Church changed its name to Bethel Baptist Church, reflecting a shift in the congregation's spoken language. Although an Adult Bible class continued to use German, all other services were offered in English.²⁹ In 1965, Bethel Baptist sold the church and

²² George S. Koyl, *American Architects Directory*, 1st Ed. (New York: R. R. Bowker Company, 1955), 28.

²³ Marvin James, Sannes, "Old West Salem City Hall," National Register of Historic Places Nomination, December 1989, on file at the Oregon SHPO, Salem; Hazel Patton, Davide Skilton, Virginia Green, Tom Green, and Julie Osburne, "Oregon State Hospital Historic District," National Register of Historic Places Nomination, August 2007, rev. January 2008, on file at the Oregon SHPO, Salem; Kathryn Burk-Hise, Libby Provost, and Natalie K. Perrin, *DRAFT Historic American Buildings Survey of State Industrial School for Girls*, 2022, on file at the Oregon Department of Administrative Services.

²⁴ Riviera Baptist Church, "Bicentennial Review," 3.

²⁵ Kylie Pine, "German Speaking Salem," *Statesman Journal*, June 1 2014, archived at Willamette Heritage Center website, <https://www.willametteheritage.org/german-speaking-salem/>.

²⁶ Pine, "German Speaking Salem."

²⁷ U.S. Census Bureau, Fifteenth Census of the United States, 1930, Salem City, Marion County, Oregon, sheet 6B, line 58.

²⁸ Albert W. Wardin, *Baptists In Oregon* (Portland, OR: Judson Baptist College, 1969), Foreword, 113, excerpted on Volga Germans in Portland, accessed May 2022, <https://www.volgagermansportland.info/uploads/3/7/7/9/37792067/oregon-baptist-pastors-excerpts.pdf>.

²⁹ Riviera Baptist Church, "Bicentennial Review," 3.

FIRST GERMAN BAPTIST CHURCH AND PARSONAGE
(Evergreen Presbyterian Church and Parsonage)

parsonage and moved to a new sanctuary, Riviera Baptist Church, in the Brush College area of West Salem.³⁰

After Bethel Baptist vacated the properties, both buildings hosted a succession of church congregations. While some congregations owned the buildings, others appear to have leased the property, as they do not appear in ownership records.³¹ Though historical records do not indicate whether all the congregations used the parsonage building nor what they used it for, use of the church building as a sanctuary is well documented. The Franklin Memorial Latter Rain Church purchased the property in 1966, changing the church's name to the Bethel Temple in 1968 and occupying the space until approximately 1971.³² Bethany Baptist worshiped at the property from 1971 to 1974, and Salem Baptist Temple followed from 1975 to 1978.³³ Occupants in the years from 1978 through 1981 are unknown. From 1982 to 1988, Salem Gospel Outreach used the buildings.³⁴ A five-year gap in ownership and occupation records exist, until Valley Christian Fellowship occupied the spaces from 1993 to 2005.³⁵ From 2007 to 2017, Evergreen Presbyterian used the buildings.³⁶ By 2022, Dominion Covenant Church worshiped in the sanctuary building; it is unknown how long they used the space.³⁷

In addition to using the buildings for worship and church housing, various congregations created community services in both the church building and the parsonage. Aside from its use as a private residence for pastors such as Gustave W. Rutsch (First German Baptist) and Don Daughterty (Salem Baptist Temple), in the 1950s the parsonage served as a location for Sunday school classes.³⁸ By 2002, Valley Christian Fellowship operated "The Gate Coffeehouse," a café that hosted live music in the church.³⁹ After acquiring the properties in 2008, Evergreen Presbyterian started a community bicycle repair and recycling program called the Northwest Hub in the sanctuary building's boiler room.⁴⁰

³⁰ Riviera Baptist Church, "Bicentennial Review," 3.

³¹ 925 Cottage St. NE Salem, OR., Marion County Assessor's Property Records, accessed March 2022; 905 Cottage St. NE Salem, OR Marion County Assessor's Property Records, accessed March 2022.

³² Advertisement, "They Say There is No God," *Statesman Journal*, September 24, 1966, 7; "Salem Area Directory of Churches," *Capital Journal*, August 26, 1967, 13; Advertisement, "The Franklin Memorial Latter Rain Church," *Capital Journal*, February 24, 1968, 6; Advertisement, "Bethel Temple," *Capital Journal*, March 2, 1968, 6; *Salem City Directory* (Monterey Park, CA: R. L. Polk & Co., 1971), 50.

³³ "Crime Reports," *Capital Journal*, December 2, 1975, 15; *Salem City Directory*, 1971, 101; *Salem City Directory* (Monterey Park, CA: R. L. Polk & Co., 1978), 115.

³⁴ Advertisement, "Salem Gospel Outreach," *Statesman Journal*, April 3, 1982, 22; *Salem City Directory* (Monterey Park, CA: R. L. Polk & Co., 1985), 75; *Salem City Directory* (Monterey Park, CA: R. L. Polk & Co., 1988), 534.

³⁵ "In Brief," *Statesman Journal*, June 26, 1993, 18; "Miscellaneous," *Statesman Journal*, March 20, 1999, 18; "Performance," *Statesman Journal*, April 24, 2005, 30.

³⁶ "Evergreen Church Moves to New Home," *Statesman Journal*, October 17, 2007, 56; Straus and Edging, *The Houses of Grant Neighborhood*, 37; "Services Today," *Statesman Journal*, September 23, 2017, A4.

³⁷ Noted by Historical Research Associates, Inc., at the time of survey for this report.

³⁸ Riviera Baptist Church, "Bicentennial Review," 3; U.S. Census Bureau, Fifteenth Census of the United States, sheet 6B, line 58; *Salem City Directory*, 1978.

³⁹ "Youths Seek Entertainment," *Statesman Journal*, February 25, 2002.

⁴⁰ Straus and Edging, *The Houses of Grant Neighborhood*, 37; Stafanie Knowlton, "Hub Gives Skills, Wheels," *Statesman Journal*, February 15, 2014.

FIRST GERMAN BAPTIST CHURCH AND PARSONAGE
(Evergreen Presbyterian Church and Parsonage)

Although the buildings served as a home for numerous congregations, the First German Baptist Church and parsonage remain mostly unchanged from the date of their construction. No additions or notable exterior alterations are recorded to either building.

In 2020, DevNW pursued a purchase and rezoning of the buildings to convert them into multi-family units. The City of Salem planning commission approved the request in September 2020.⁴¹ A supplemental staff report indicated adaptation of the buildings would constitute an adverse effect to the eligible historic property.⁴² As previously noted, the buildings were recorded in the OHSD under the name Bethel Baptist, though no further information on the buildings' eligibility was included.⁴³ Evergreen Presbyterian Church sold the sanctuary and parsonage to DevNW in 2021.⁴⁴

Sources of Information

Bibliography

Green, Virginia. "Immanuel Baptist Church, 1997 Hazel Avenue NE in Highland (LL)." *Shine on Salem*. Accessed May 13, 2022, <https://shineonsalem.org/immanuel-baptist-church-1997-hazel-avenue-ne-ll/>.

Jette, Melinda. "Kalapuya Treaty." Oregon Encyclopedia. Accessed May 13, 2022, https://www.oregonencyclopedia.org/articles/kalapuya_treaty/#.Yn1F9-jMKUk.

Johnson, LaShavio. Letter to Ms. Shelly Ehenger, City of Salem Urban Development Department, regarding ACHP Project No. 16698, Proposed Renovation of the Evergreen Presbyterian Church, Salem, Oregon. April 20, 2021.

Koyl, George S., ed. *American Architects Directory*, 1st Ed. New York: R. R. Bowker Company, 1955.

Lewis, David. "City of Salem." Oregon Encyclopedia. Accessed May 13, 2022, https://www.oregonencyclopedia.org/articles/salem_city_of/#.Yn1Ge-jMKUk.

Marion County Tax Assessor. Marion County's Geographic Information System (online maps). Accessed April 2022, <https://mcase.co.marion.or.us/PropertySearch.aspx>.

McAlester, Virginia Savage. *A Field Guide to American Houses*. New York: Alfred A. Knopf, 2018.

⁴¹ Salem Planning Commission, "Agenda Item No. 5.1: Comprehensive Plan Change," September 15, 2020, <https://www.cityofsalem.net/meetingdocs/salem-planning-commission-addendum-a-2020-09-15.pdf>

⁴² Salem Planning Commission, "Supplemental Staff Report, Case No. CPC-AC-SPR-ADJ-DR20-03," September 10, 2020, <https://www.cityofsalem.net/meetingdocs/salem-planning-commission-addendum-a-2020-10-06.pdf>

⁴³ 905 Cottage St. NE and 925 Cottage St. NE, Oregon Historic Sites Database, accessed May 13, 2022, http://heritagedata.prd.state.or.us/historic/index.cfm?do=v.dsp_siteSummary&resultDisplay=681482.

⁴⁴ 925 Cottage St. NE Salem, OR., Marion County Assessor's Property Records, accessed March 2022; 905 Cottage St. NE Salem, OR Marion County Assessor's Property Records, accessed March 2022.

FIRST GERMAN BAPTIST CHURCH AND PARSONAGE
(Evergreen Presbyterian Church and Parsonage)

Memorandum of Agreement between the City of Salem, Oregon and the Oregon State Historic Preservation Office Regarding the Renovation of the Evergreen Presbyterian Church, Salem, Marion County, Oregon. Oregon SHPO Case Number 20-0775.

NETROnline. Historic Aerials 1952–2022. Accessed April 2022,
<https://www.historicaerials.com/viewer>.

Oregon Historic Sites Database. Oregon Historic Preservation Office, Oregon Historic Site Record for Bethel Baptist Church. Accessed April 2022,
http://heritagedata.prd.state.or.us/historic/index.cfm?do=v.dsp_siteSummary&resultDisplay=681482.

Oregon Historic Sites Database. Oregon Historic Site Record for Bethel Baptist Church Parsonage. Accessed April 2022,
http://heritagedata.prd.state.or.us/historic/index.cfm?do=v.dsp_siteSummary&resultDisplay=681483.

Patton, Hazel, Davide Skilton, Virginia Green, Tom Green, and Julie Osburne. “Oregon State Hospital Historic District,” National Register of Historic Places Nomination, August 2007, rev. January 2008. On file at the Oregon SHPO, Salem.

R. L. Polk Company City Directories. *City Directory for City of Salem, Marion County, Oregon.* Monterey Park, CA: R. L. Polk Company, 1971.

R. L. Polk Company City Directories. *City Directory for City of Salem, Marion County, Oregon.* Monterey Park, CA: R. L. Polk Company, 1977.

R. L. Polk Company City Directories. *City Directory for City of Salem, Marion County, Oregon.* Monterey Park, CA: R. L. Polk Company, 1978.

R. L. Polk Company City Directories. *City Directory for City of Salem, Marion County, Oregon.* Monterey Park, CA: R. L. Polk Company, 1981.

R. L. Polk Company City Directories. *City Directory for City of Salem, Marion County, Oregon.* Monterey Park, CA: R. L. Polk Company, 1985.

R. L. Polk Company City Directories. *City Directory for City of Salem, Marion County, Oregon.* Monterey Park, CA: R. L. Polk Company, 1988.

Ritz, Richard Ellison. *Architects of Oregon: A Biographical Dictionary of Architects Deceased – 19th and 20th Centuries.* Portland: Lair Hill Publishing, 2002.

Riviera Baptist Church. “Bicentennial Review,” pamphlet. July 4, 1976. Willamette Heritage Center.

FIRST GERMAN BAPTIST CHURCH AND PARSONAGE
(Evergreen Presbyterian Church and Parsonage)

Robbins, William G. "Oregon Donation Land Law." Oregon Encyclopedia. Accessed May 13, 2022,
https://www.oregonencyclopedia.org/articles/oregon_donation_land_act/#.Yn1FUejMKUk.

Salem Planning Commission, "Supplemental Staff Report, Case No. CPC-AC-SPR-ADJ-DR20-03," September 10, 2020, <https://www.cityofsalem.net/meetingdocs/salem-planning-commission-addendum-a-2020-10-06.pdf>

Salem Planning Commission. "Agenda Item No. 5.1: Comprehensive Plan Change," September 15, 2020, <https://www.cityofsalem.net/meetingdocs/salem-planning-commission-addendum-a-2020-09-15.pdf>

Sanborn Map Company. *Insurance Maps of Salem, Marion County, Oregon*. New York: Sanborn Map Company, 1926.

Sannes, Marvin James. "Old West Salem City Hall," National Register of Historic Places Nomination, December 1989. On file at the Oregon SHPO, Salem.

Siegel, Mark. "Immanuel Baptist Church," at Oregon Historic Sites Database, 1997 Hazel NE, Salem, accessed May 12, 2022,
http://heritagedata.prd.state.or.us/historic/index.cfm?do=v.dsp_siteSummary&resultDisplay=46321.

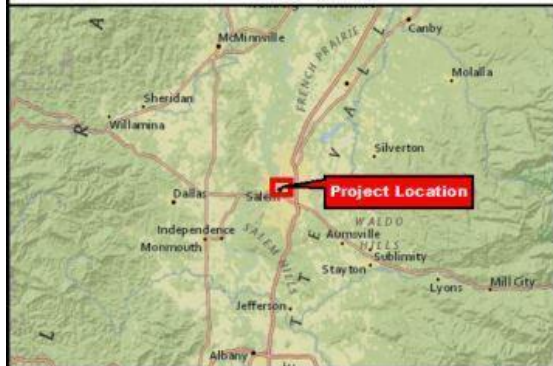
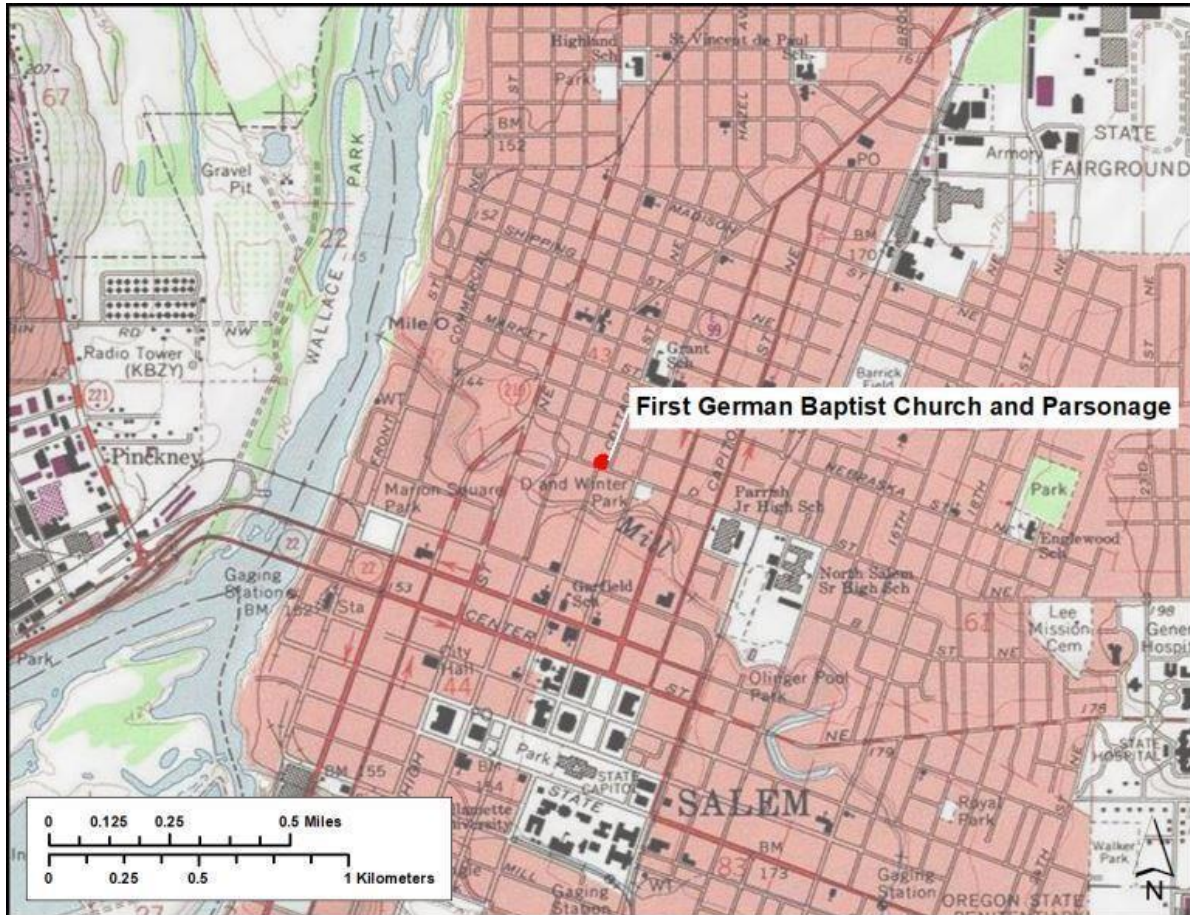
Straus, Kirsten, and Sean Edging. *The Houses of Grant Neighborhood*. City of Salem Historic Planning Division. Prepared for the City of Salem and Grant Neighborhood Association, 2015.


Wardin, Albert W. *Baptists In Oregon*. Portland, Oregon: Judson Baptist College, 1969. Excerpted on *Volga Germans in Portland*, accessed May 2022,
<https://www.volgagermansportland.info/uploads/3/7/7/9/37792067/13regon-baptist-pastors-excerpts.pdf>.

Zenk, Henry. "Kalapuyan Peoples." Oregon Encyclopedia. Accessed May 13, 2022.
https://www.oregonencyclopedia.org/articles/kalapuyan_peoples/#.Yn1FGOjMKUk.

FIRST GERMAN BAPTIST CHURCH AND PARSONAGE
(Evergreen Presbyterian Church and Parsonage)

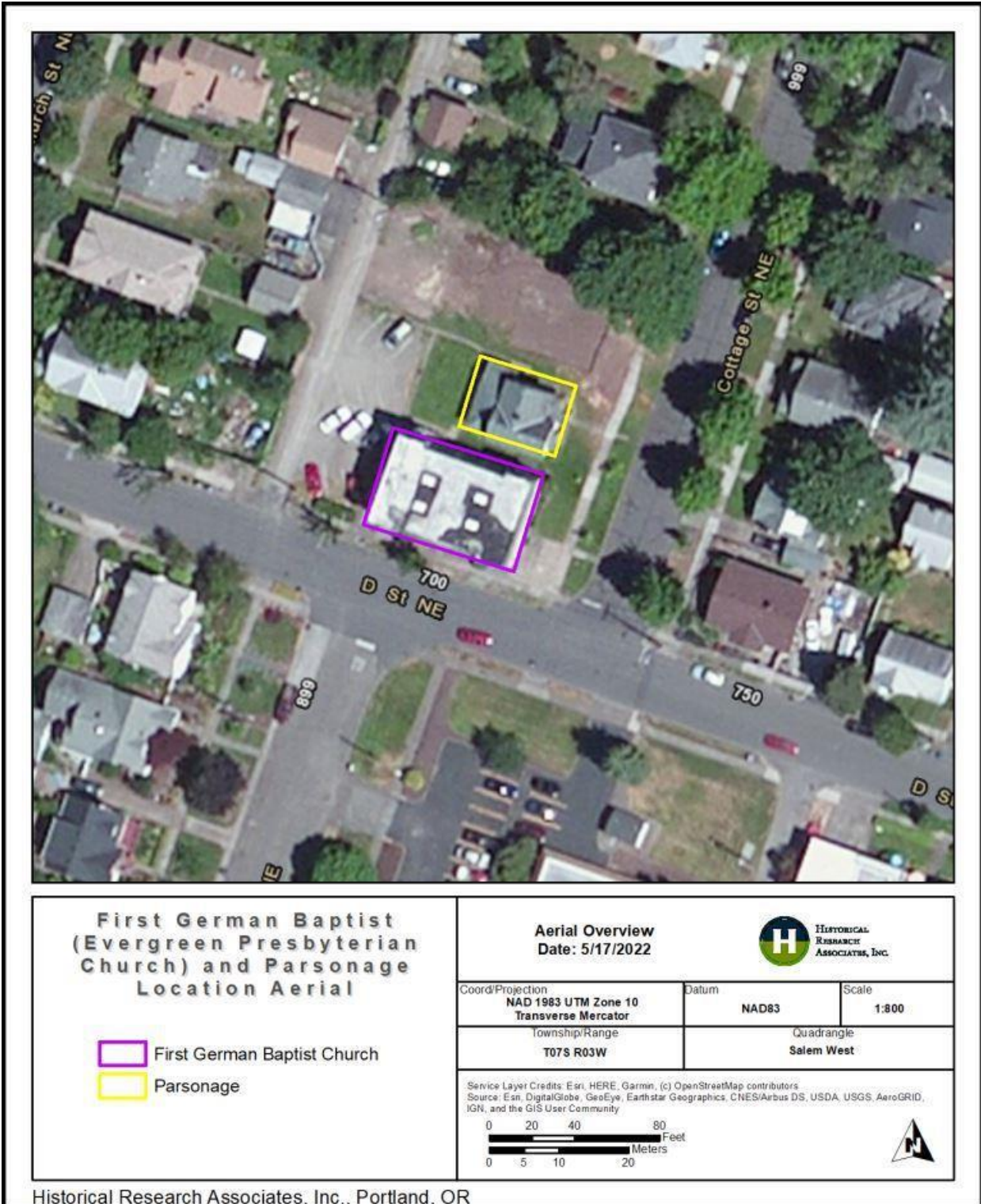
Map, Plans, Photographs



 HISTORICAL RESEARCH ASSOCIATES, INC.		Date: 5/17/2022	
Coord./Project	Datum	Scale	
NAD 1983 UTM Zone 10 Transverse Mercator	NAD83	1:24,000	
Township/Range	Quadrangle		
T07S R03W	Salem West, OR		
Historical Research Associates, Inc. Service Layer Credits: Copyright© 2013 National Geographic Society, i-cubed National Geographic, Esri, Garmin, HERE, UNEP-WCMC, USGS, NASA, ESA, METI, NRCAN, GEBCO, NOAA, increment P Corp.			

TOPOGRAPHIC MAP: First German Baptist Church and Parsonage (Evergreen Presbyterian Church and Parsonage).

FIRST GERMAN BAPTIST CHURCH AND PARSONAGE
(Evergreen Presbyterian Church and Parsonage)



AERIAL MAP: First German Baptist Church and Parsonage (Evergreen Presbyterian Church and Parsonage).

SCALE SITE AND FLOOR PLANS

(See APPENDIX A)

PHOTO INDEX, PHOTOGRAPHS, AND PHOTOGRAPH LOCATION MAPS

(See APPENDIX B AND C)

Archival Materials



First German Baptist Church, shortly after the church renamed its congregation Bethel Baptist, 1938. Image courtesy of Evergreen Church.



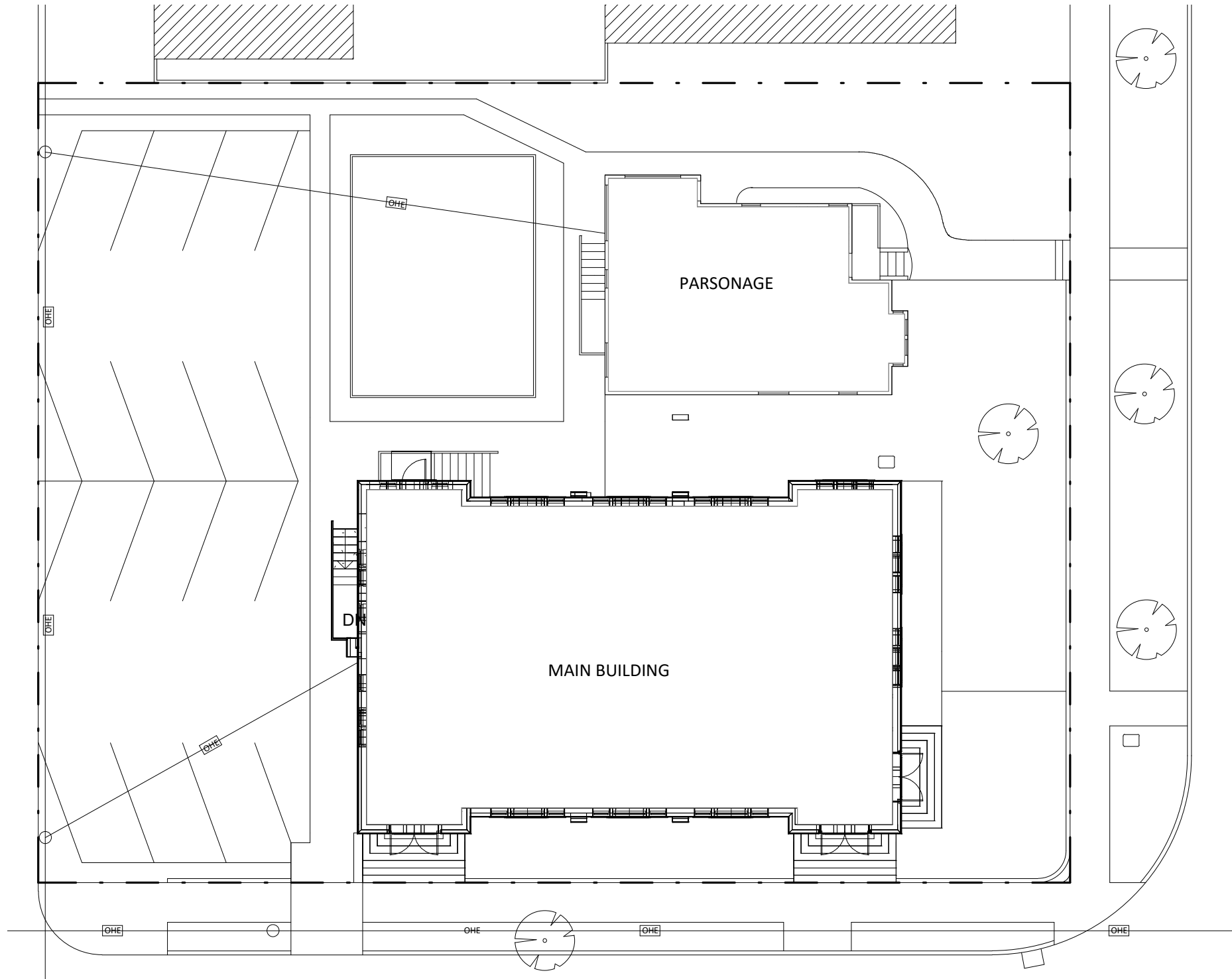
First German Baptist Church Parsonage, 1978. Image courtesy of the Koval Collection, Salem Public Library Historic Photograph Collections, Salem Public Library, Oregon.

**APPENDIX A: First German Baptist Church and
Parsonage—Scale Site Plans and Floor Plans**



GMA ARCHITECTS
 860 West Park Street/ Ste 300
 Eugene/ Oregon/ 97401
 p 541.344.9157
 gma-arch.com

**NOT FOR
 CONSTRUCTION**



1 EXISTING SITE PLAN
 1/16" = 1'-0"

DEV NW - EVERGREEN

905 COTTAGE ST NE, SALEM, OR 97301

SCHEMATIC DESIGN

PROJECT NO.: 20222

ISSUE DATE: 03/02/22

EXISTING SITE
 PLAN

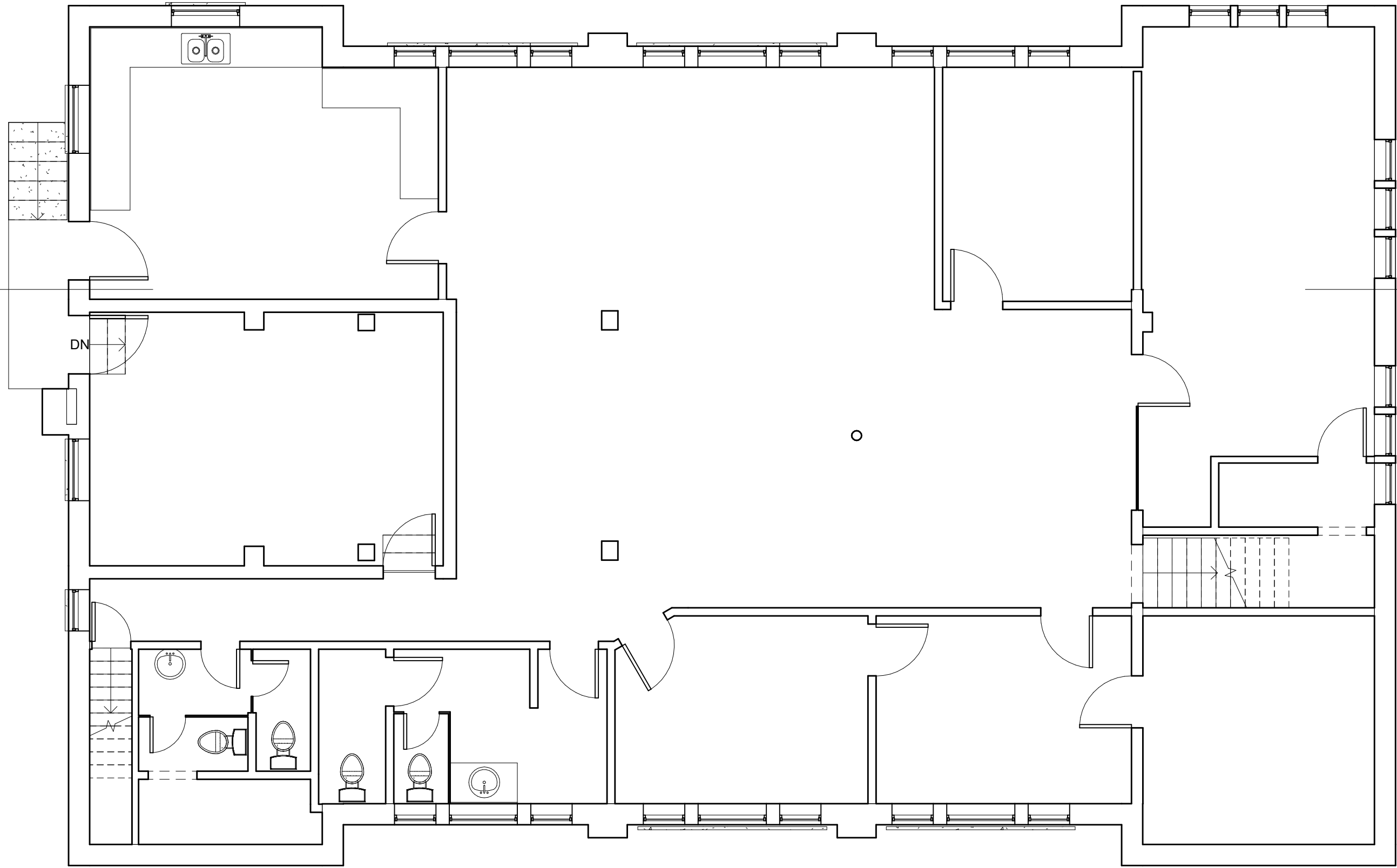
XA100

© GMA ARCHITECTS 2022



GMA ARCHITECTS
 860 West Park Street/ Ste 300
 Eugene/ Oregon/ 97401
 p 541.344.9157
 gma-arch.com

**NOT FOR
 CONSTRUCTION**



3
 XA300

DEV NW - EVERGREEN MAIN BUILDING

905 COTTAGE ST NE, SALEM, OR 97301

SCHEMATIC DESIGN

PROJECT NO.: 20222

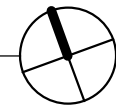
ISSUE DATE: 03/02/22

EXISTING
 BASEMENT
 PLAN

XA110

© GMA ARCHITECTS 2022

1 EXISTING BASEMENT FLOOR
 3/16" = 1'-0"

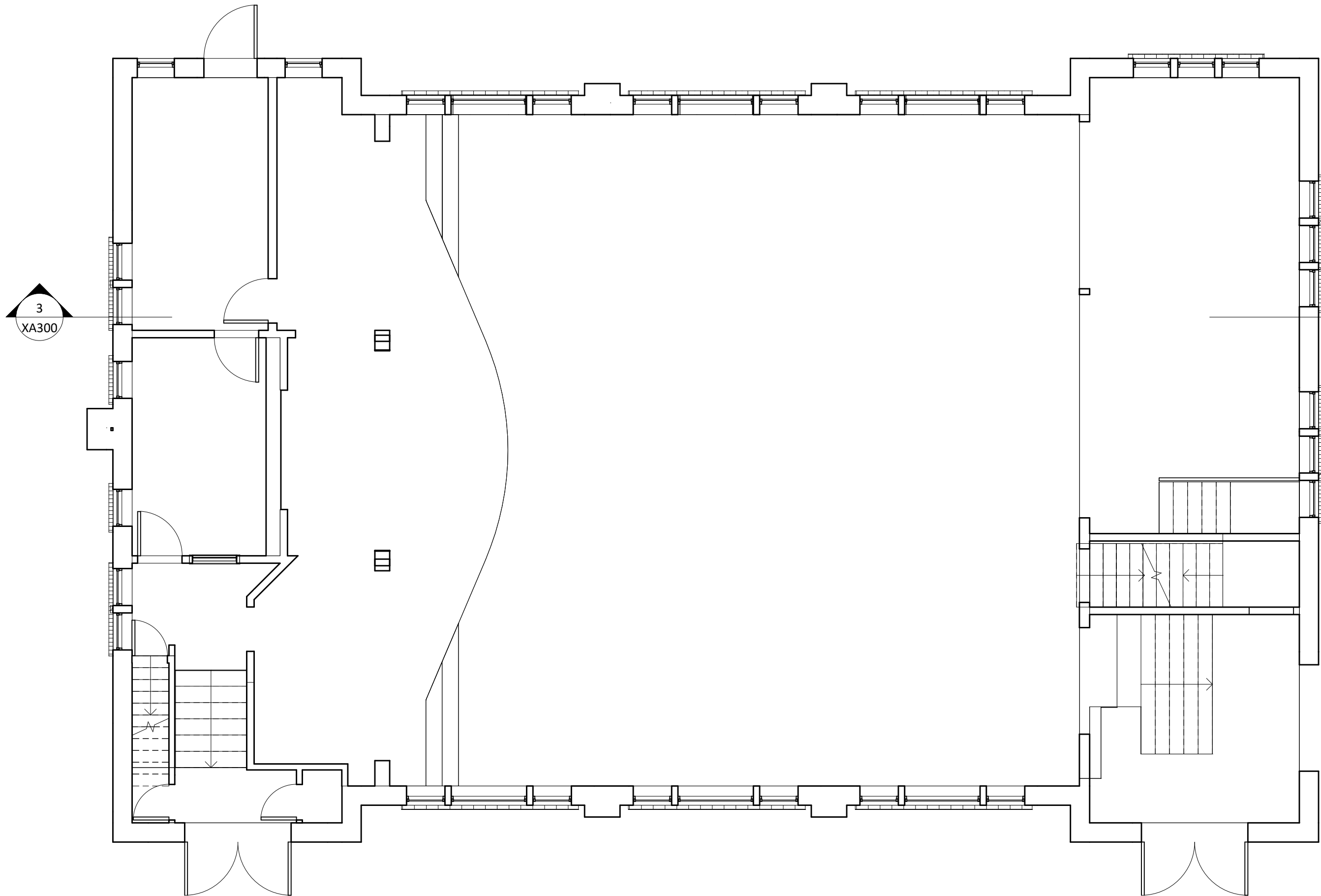


BIM 360://20222 DevNW 905 Cottage St/20222 DevNW 905 Cottage St - MAIN.rvt
 3/10/2022 8:16:07 AM

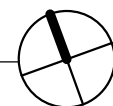


GMA ARCHITECTS
 860 West Park Street/ Ste 300
 Eugene/ Oregon/ 97401
 p 541.344.9157
 gma-arch.com

**NOT FOR
 CONSTRUCTION**



3
 XA300



DEV NW - EVERGREEN MAIN BUILDING

905 COTTAGE ST NE, SALEM, OR 97301

SCHEMATIC DESIGN

PROJECT NO.: 20222

ISSUE DATE: 03/02/22

EXISTING FIRST
 FLOOR PLAN

XA111

© GMA ARCHITECTS 2022

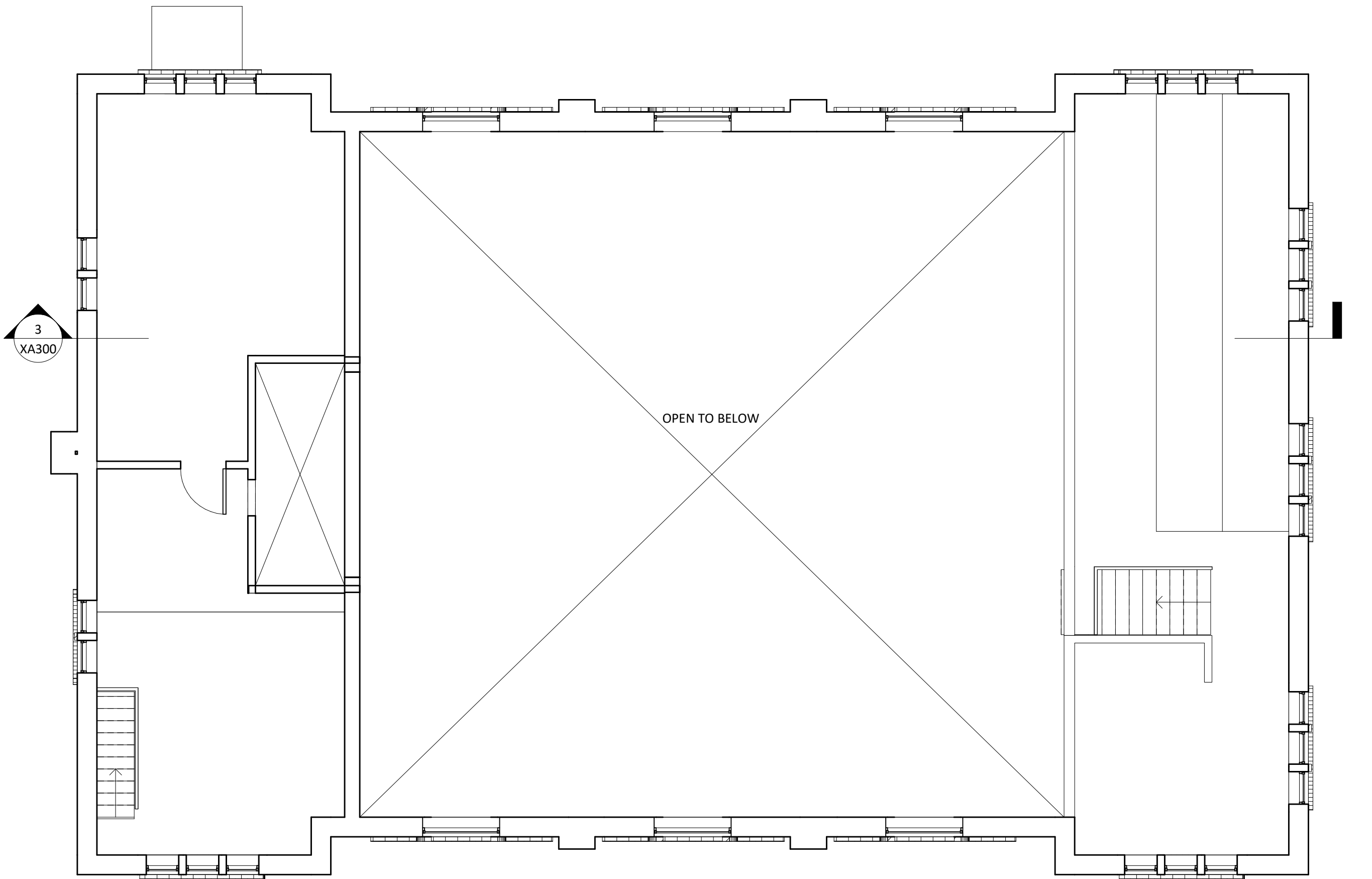
1 EXISTING FIRST FLOOR
 3/16" = 1'-0"

3/10/2022 8:16:07 AM BIM 360://20222 DevNW 905 Cottage St/20222 DevNW 905 Cottage St - MAIN.rvt



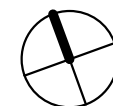
GMA ARCHITECTS
 860 West Park Street/ Ste 300
 Eugene/ Oregon/ 97401
 p 541.344.9157
 gma-arch.com

**NOT FOR
 CONSTRUCTION**



BIM 360://20222 DevNW 905 Cottage St/20222 DevNW 905 Cottage St - MAIN.rvt
 3/10/2022 8:16:07 AM

1 EXISTING SECOND FLOOR
 3/16" = 1'-0"



DEV NW - EVERGREEN MAIN BUILDING

905 COTTAGE ST NE, SALEM, OR 97301

SCHEMATIC DESIGN

PROJECT NO.: 20222

ISSUE DATE: 03/02/22

EXISTING
 SECOND FLOOR
 PLAN

XA112

© GMA ARCHITECTS 2022



GMA ARCHITECTS
 860 West Park Street/ Ste 300
 Eugene/ Oregon/ 97401
 p 541.344.9157
 gma-arch.com

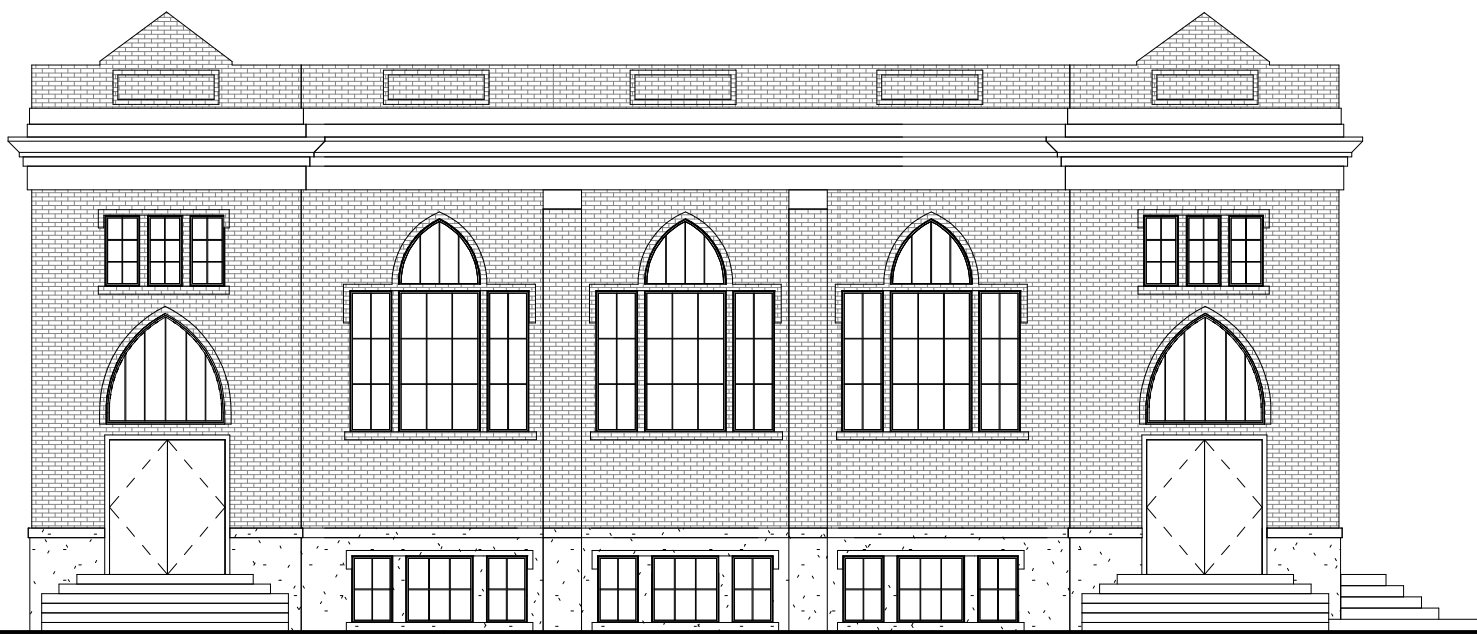
NOT FOR
 CONSTRUCTION



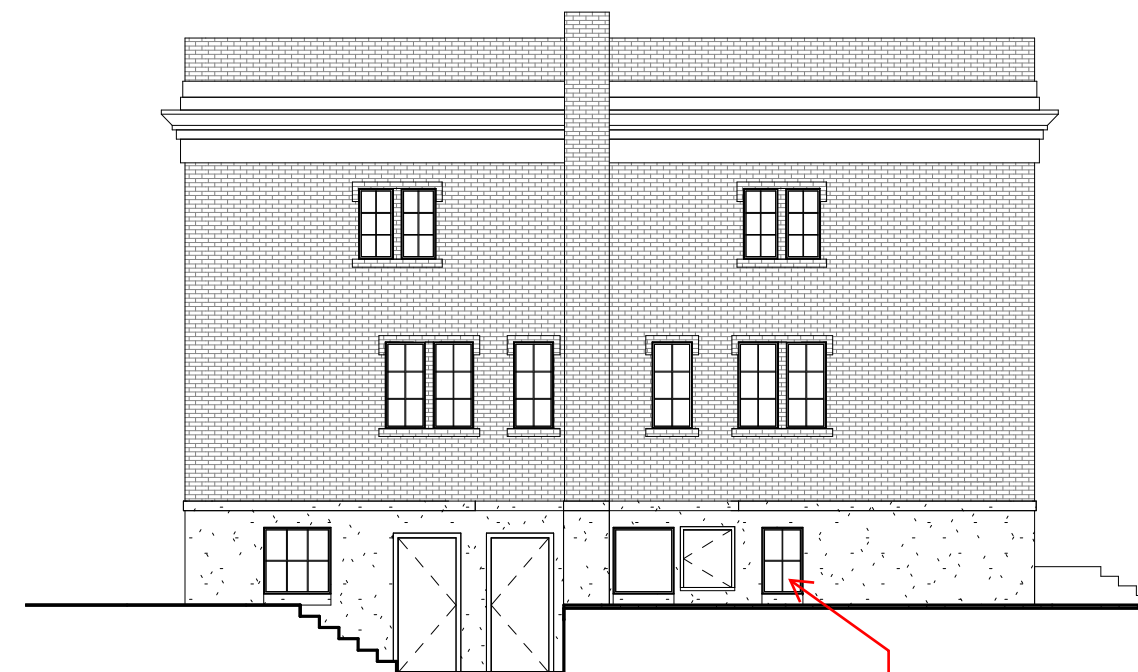
1 EXISTING CHURCH NORTH
 1" = 10'-0"



2 EXISTING CHURCH EAST
 1" = 10'-0"



3 EXISTING CHURCH SOUTH
 1" = 10'-0"



4 EXISTING CHURCH WEST
 1" = 10'-0"

new opening here

DEV NW - EVERGREEN MAIN BUILDING

905 COTTAGE ST NE, SALEM, OR 97301

SCHEMATIC DESIGN

PROJECT NO.: 20222

ISSUE DATE: 03/02/22

EXISTING
 BUILDING
 ELEVATIONS

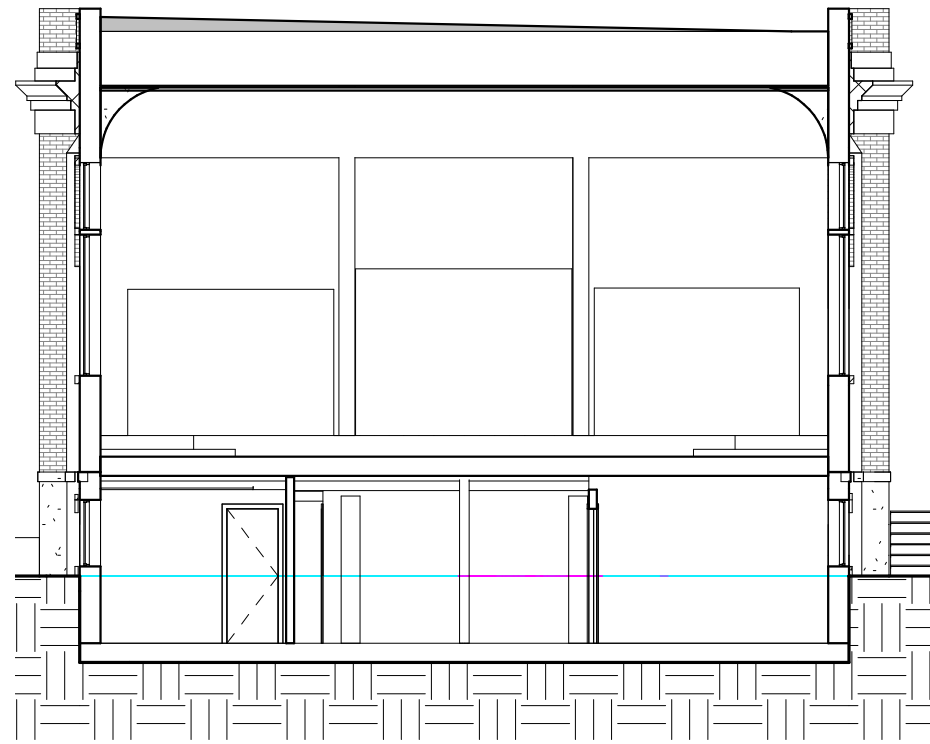
XA200

© GMA ARCHITECTS 2022



GMA ARCHITECTS
 860 West Park Street/ Ste 300
 Eugene/ Oregon/ 97401
 p 541.344.9157
 gma-arch.com

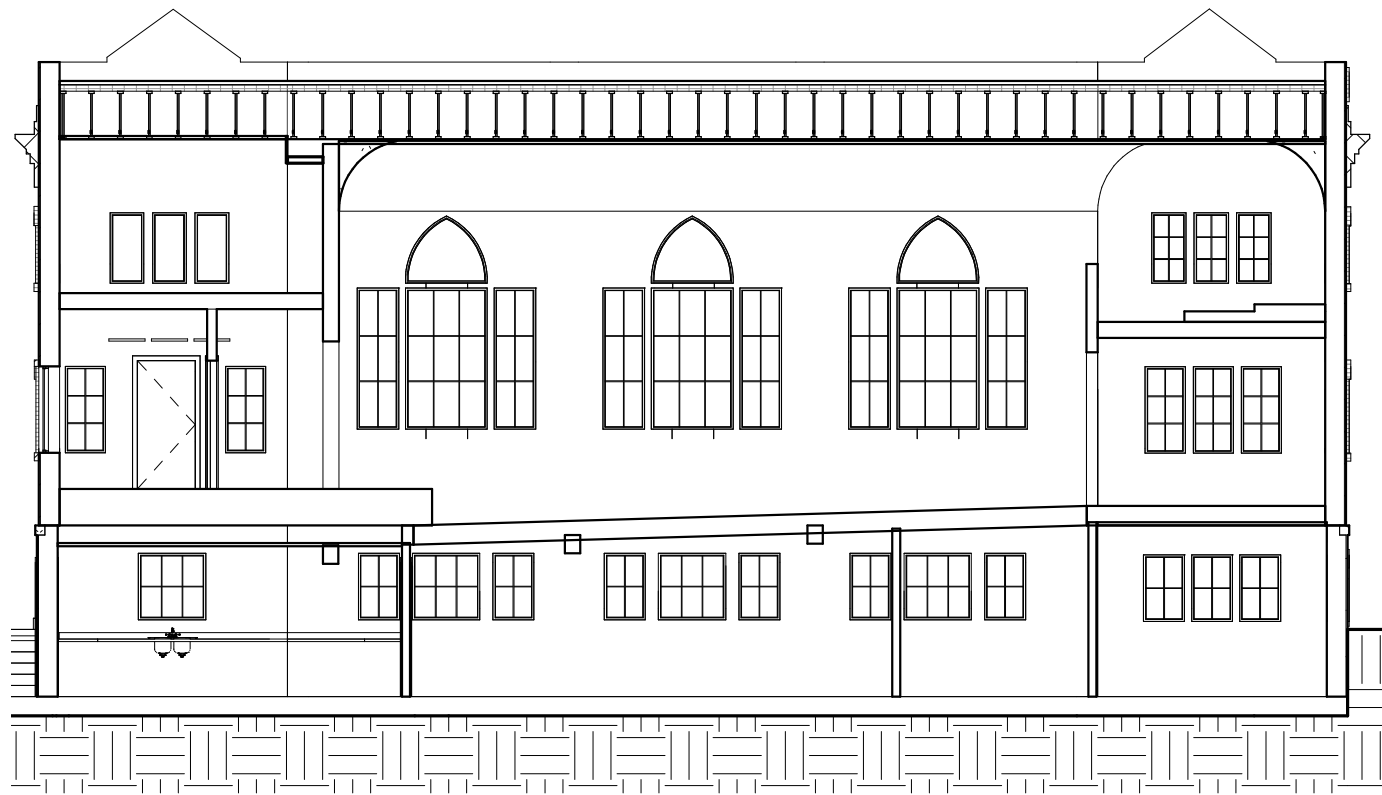
**NOT FOR
 CONSTRUCTION**



1 EXISTING NORTH SOUTH SECTION 1
 1" = 10'-0"



2 EXISTING NORTH SOUTH SECTION 2
 1" = 10'-0"



3 EXISTING EAST WEST SECTION 1
 1" = 10'-0"

DEV NW - EVERGREEN

905 COTTAGE ST NE, SALEM, OR 97301

SCHEMATIC DESIGN

PROJECT NO.: 20222

ISSUE DATE: 03/10/22

EXISTING
 BUILDING
 SECTIONS

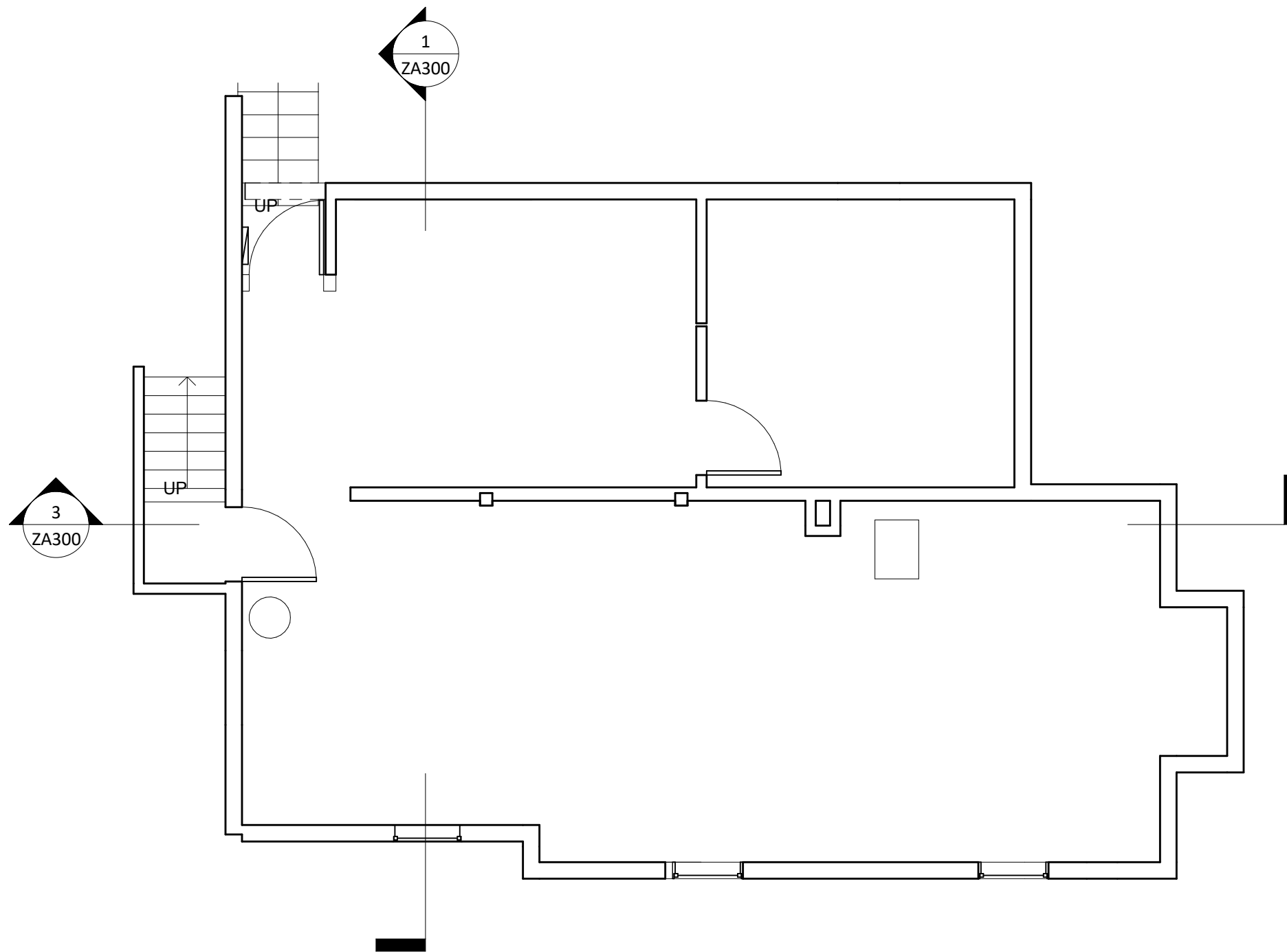
XA300

© GMA ARCHITECTS 2022

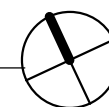


GMA ARCHITECTS
 860 West Park Street/ Ste 300
 Eugene/ Oregon/ 97401
 p 541.344.9157
 gma-arch.com

**NOT FOR
 CONSTRUCTION**



1 EXISTING BASEMENT FLOOR PLAN
 3/16" = 1'-0"



905 COTTAGE STREET - PARSONAGE

905 COTTAGE ST SALEM, OREGON 97301

Project Status

PROJECT NO.: 20222

ISSUE DATE: 03/02/22

EXISTING
 BASEMENT
 PLAN

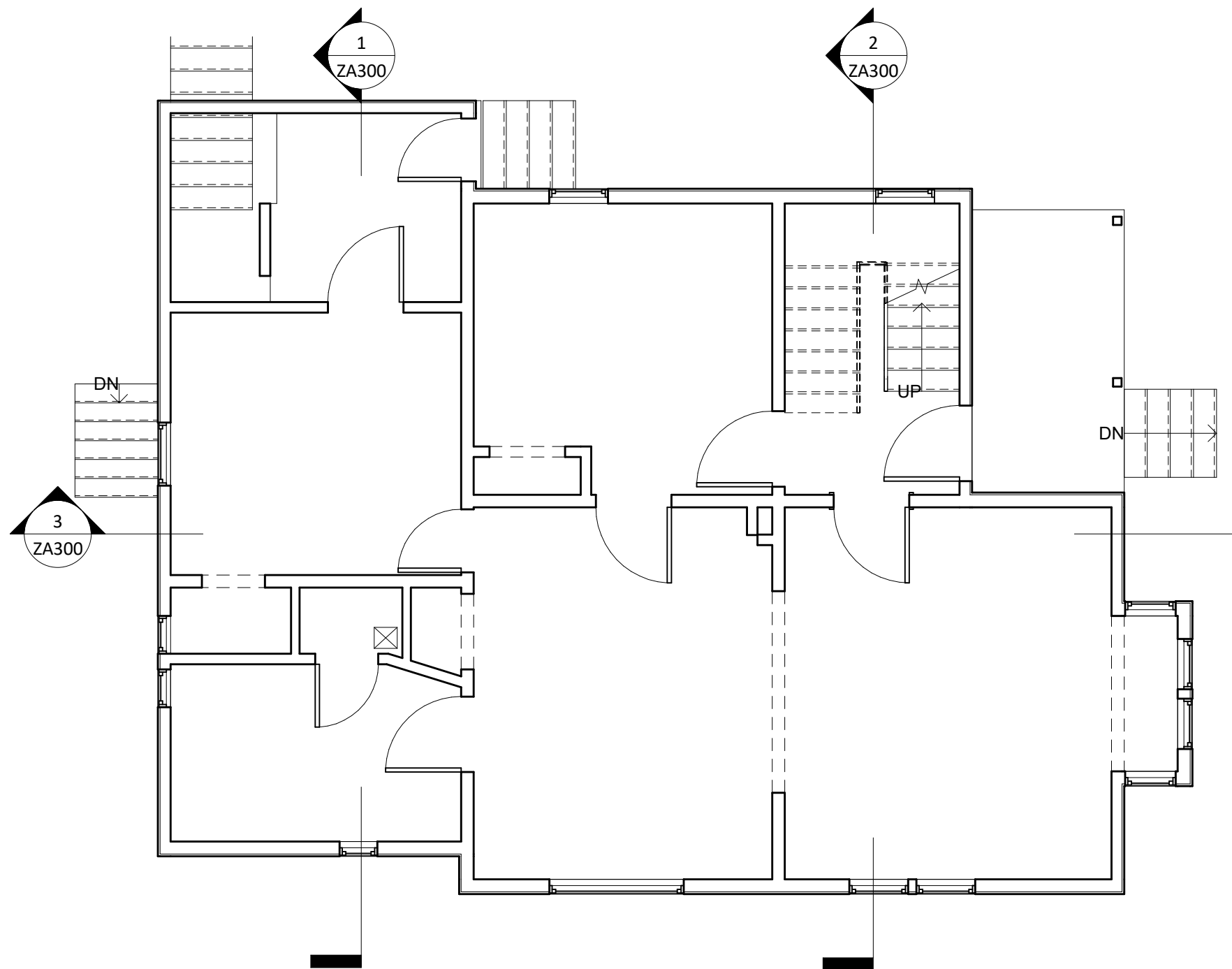
ZA110

© GMA ARCHITECTS 2022



GMA ARCHITECTS
 860 West Park Street/ Ste 300
 Eugene/ Oregon/ 97401
 p 541.344.9157
 gma-arch.com

**NOT FOR
 CONSTRUCTION**



905 COTTAGE STREET - PARSONAGE

905 COTTAGE ST SALEM, OREGON 97301

Project Status

PROJECT NO.: 20222

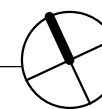
ISSUE DATE: 03/02/22

EXISTING FIRST
 FLOOR PLAN

ZA111

© GMA ARCHITECTS 2022

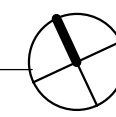
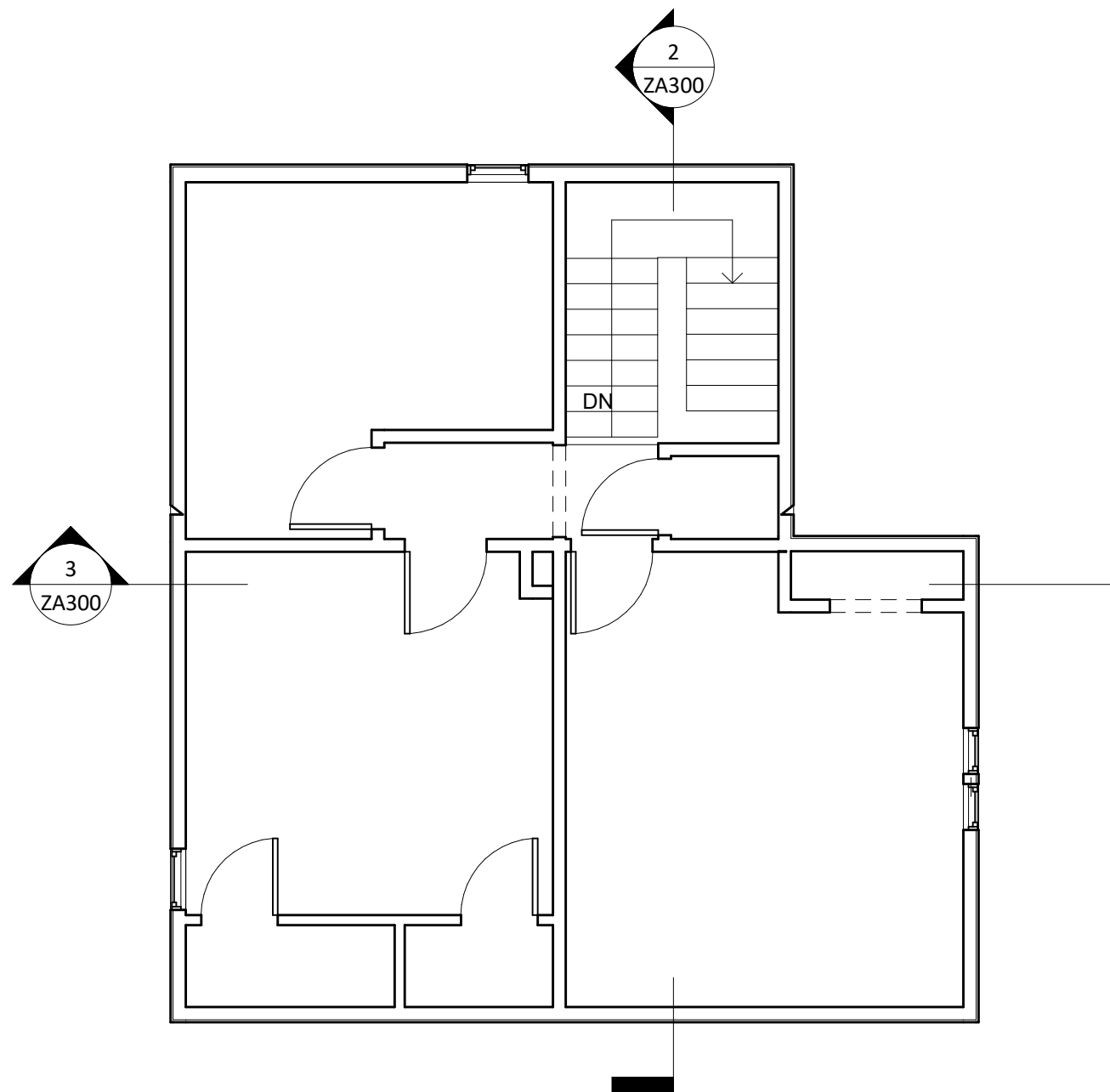
1 EXISTING FLOOR PLAN
 3/16" = 1'-0"





GMA ARCHITECTS
 860 West Park Street/ Ste 300
 Eugene/ Oregon/ 97401
 p 541.344.9157
 gma-arch.com

**NOT FOR
 CONSTRUCTION**



1 EXISTING SECOND FLOOR PLAN
 3/16" = 1'-0"

905 COTTAGE STREET - PARSONAGE

905 COTTAGE ST SALEM, OREGON 97301

Project Status

PROJECT NO.: 20222

ISSUE DATE: 03/02/22

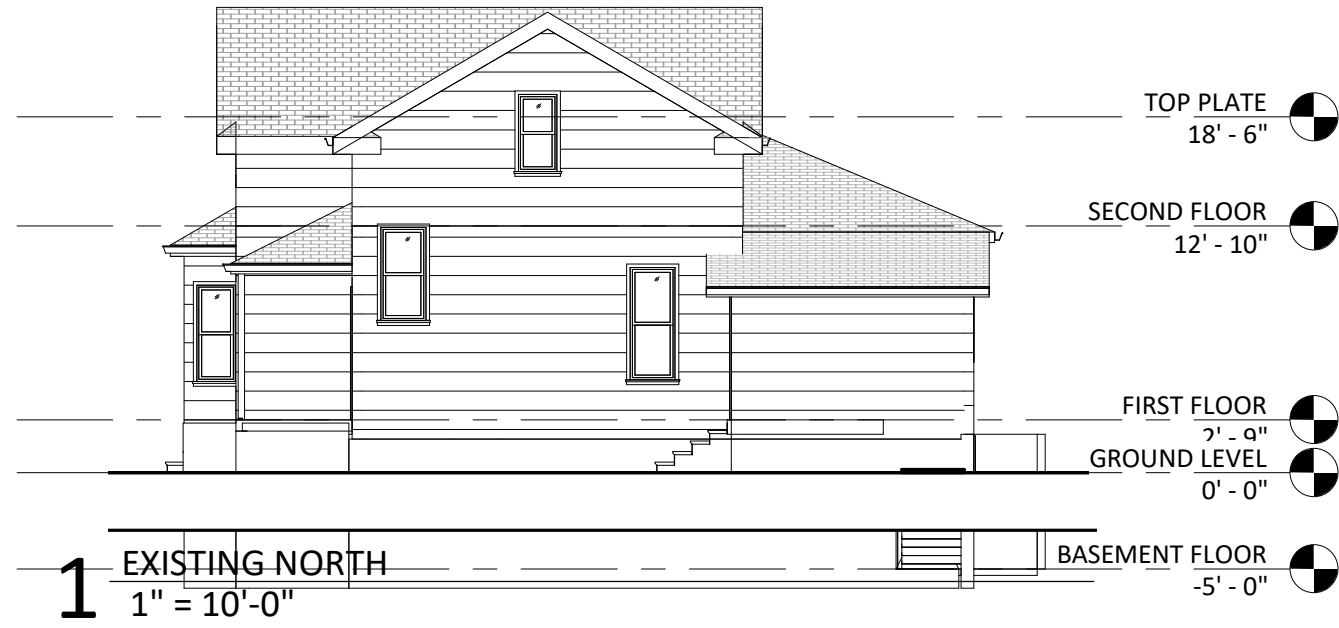
EXISTING
 SECOND FLOOR
 PLAN

ZA112



GMA ARCHITECTS
 860 West Park Street/ Ste 300
 Eugene/ Oregon/ 97401
 p 541.344.9157
 gma-arch.com

**NOT FOR
 CONSTRUCTION**



905 COTTAGE STREET - PARSONAGE

905 COTTAGE ST SALEM, OREGON 97301

Project Status

PROJECT NO.: 20222

ISSUE DATE: 03/02/22

EXISTING
 BUILDING
 ELEVATIONS

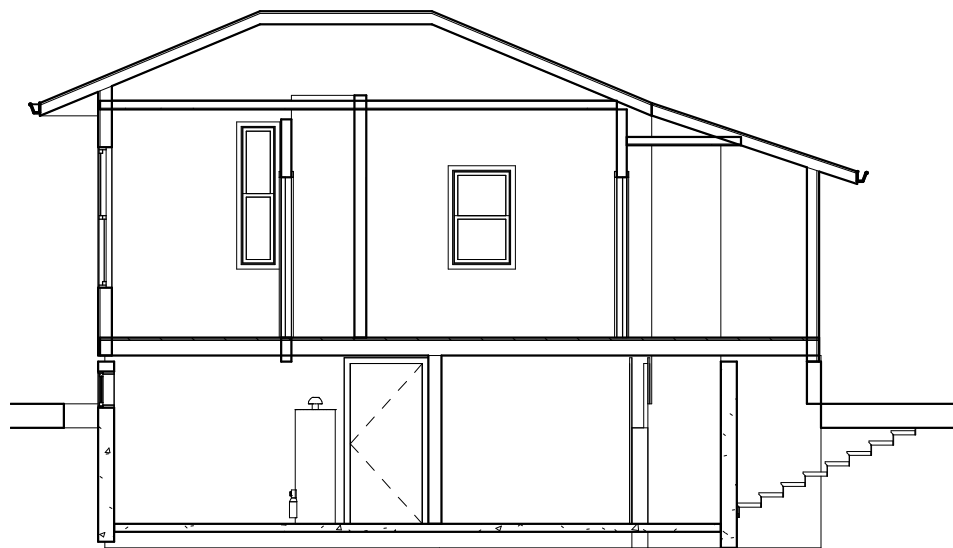
ZA200

© GMA ARCHITECTS 2022

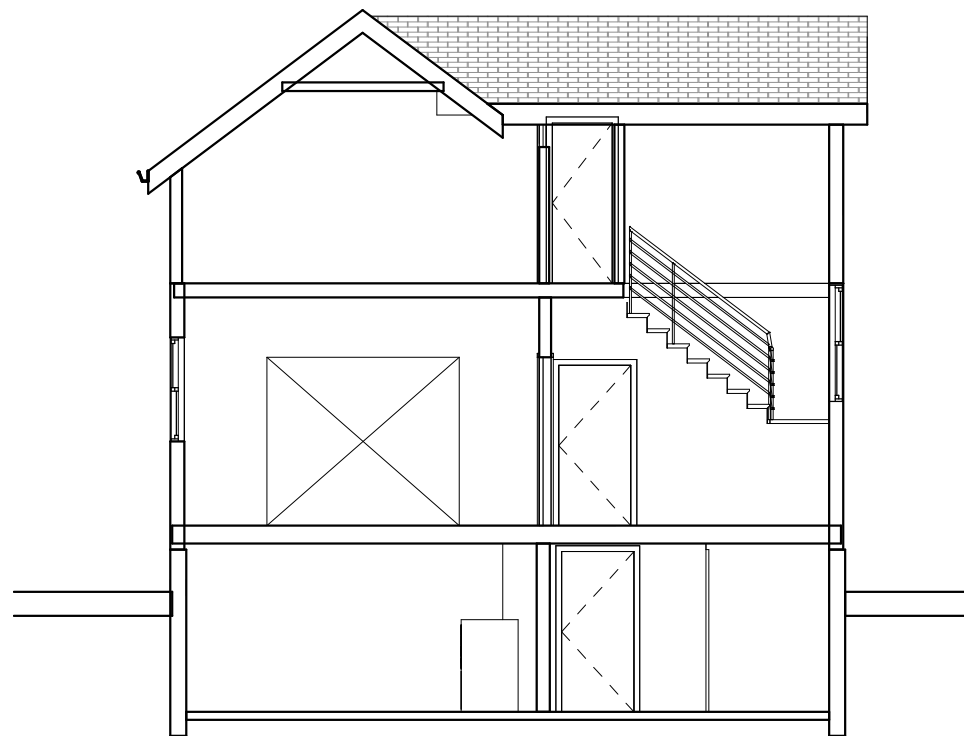


GMA ARCHITECTS
 860 West Park Street/ Ste 300
 Eugene/ Oregon/ 97401
 p 541.344.9157
 gma-arch.com

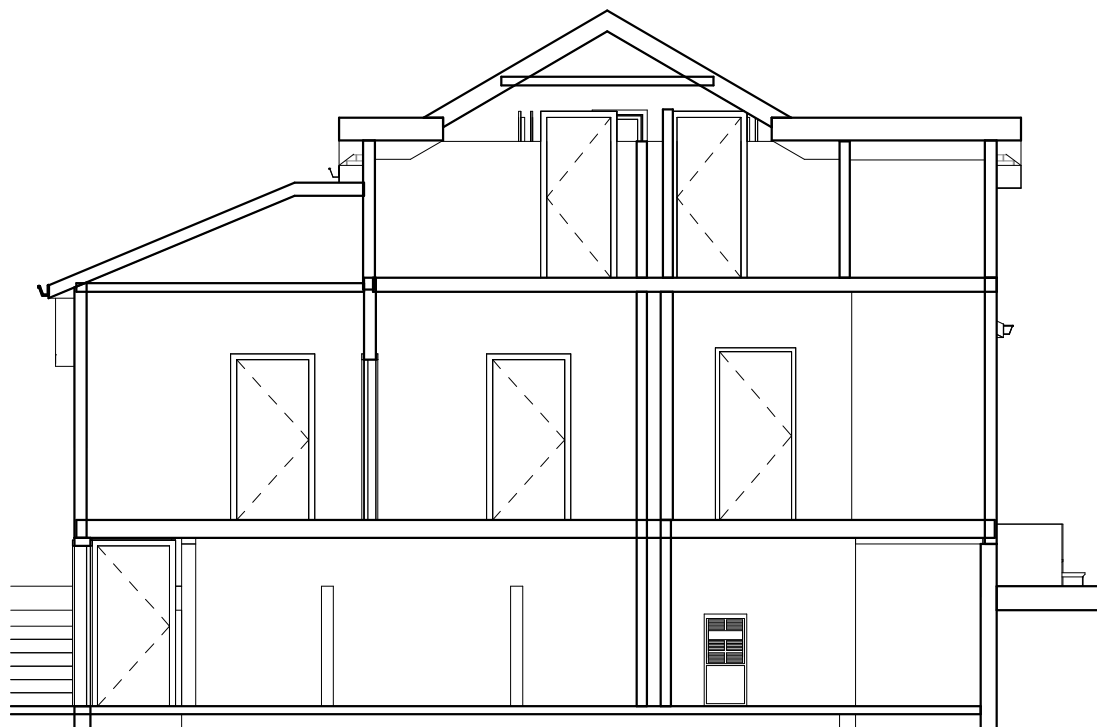
NOT FOR
 CONSTRUCTION



1 EXISTING NORTH SOUTH SECTION 1
 1/8" = 1'-0"



2 EXISTING NORTH SOUTH SECTION 2
 1/8" = 1'-0"



3 EXISTING EAST WEST SECTION 1
 1/8" = 1'-0"

905 COTTAGE STREET - PARSONAGE

905 COTTAGE ST SALEM, OREGON 97301

Project Status

PROJECT NO.: 20222

ISSUE DATE: 03/10/22

EXISTING
 BUILDING
 SECTIONS

ZA300

© GMA ARCHITECTS 2022

APPENDIX B: First German Baptist Church—Photograph Index; Photographs; Photograph Location Maps

Photograph Index

FIRST GERMAN BAPTIST CHURCH

(Evergreen Presbyterian Church)

905 NE Cottage St., Salem, Marion County, Oregon. Libby Provost, Photographer, March 2022.

Photo 1 of 53 (Cottage_905_NE_01)

Overview of church along NE Cottage St., with parsonage to north (*right*), view southwest.

Photo 2 of 53 (Cottage_905_NE_02)

Overview of church from backside, with parsonage to north (*left*), view southeast.

Photo 3 of 53 (Cottage_905_NE_03)

South and west elevations, view northeast.

Photo 4 of 53 (Cottage_905_NE_04)

South and west elevations, with parking lot to west (*left*), view northeast.

Photo 5 of 53 (Cottage_905_NE_05)

Detail of plaque at southeast corner, view north.

Photo 6 of 53 (Cottage_905_NE_06)

South and east elevations, with parsonage to north (*right*), view northwest.

Photo 7 of 53 (Cottage_905_NE_07)

East elevation, view west.

Photo 8 of 53 (Cottage_905_NE_08)

Double-door entry at east elevation, view west.

Photo 9 of 53 (Cottage_905_NE_09)

Close-up of double-door entry at east elevation, view west.

Photo 10 of 53 (Cottage_905_NE_10)

Close-up of basement and first-floor windows at east elevation, view northwest.

Photo 11 of 53 (Cottage_905_NE_11)

North and west elevations, view southeast.

Photo 12 of 53(Cottage_905_NE_12)

North and west elevations, view southeast.

Photo 13 of 53(Cottage_905_NE_13)

Close-up lancet window at north elevation, view south.

Photo 14 of 53(Cottage_905_NE_14)

Raised entry at north elevation, view southwest.

Photo 15 of 53(Cottage_905_NE_15)

First- and second-floor windows at west elevation (south side), view southeast.

Photo 16 of 53(Cottage_905_NE_16)

West elevation, view east.

Photo 17 of 53(Cottage_905_NE_17)

Basement entries at west elevation, view east.

Photo 18 of 53(Cottage_905_NE_18)

Basement windows at west elevation, view southeast.

Photo 19 of 53(Cottage_905_NE_19)

First- and second-floor windows at west elevation (north side), view east.

Photo 20 of 53(Cottage_905_NE_20)

Basement interior showing central space, view northwest.

Photo 21 of 53(Cottage_905_NE_21)

Basement interior showing stairwell and classroom (east side), view east.

Photo 22 of 53(Cottage_905_NE_22)

Basement interior showing classroom (northeast corner), view northeast.

Photo 23 of 53(Cottage_905_NE_23)

Basement interior showing classroom (northeast corner), view north.

Photo 24 of 53(Cottage_905_NE_24)

Basement interior showing classroom (northeast corner), view southwest.

Photo 25 of 53(Cottage_905_NE_25)

Basement interior door, view northwest.

Photo 26 of 53(Cottage_905_NE_26)

Basement interior showing central space, view southeast.

Photo 27 of 53(Cottage_905_NE_27)

Basement interior showing kitchen (northwest corner), view northwest.

Photo 28 of 53(Cottage_905_NE_28)

Basement interior showing kitchen, view east.

Photo 29 of 53(Cottage_905_NE_29)

Basement interior doors, view southeast.

Photo 30 of 53(Cottage_905_NE_30)

Basement hallway (southwest side), view west.

Photo 31 of 53(Cottage_905_NE_31)

Basement utility room, view northwest.

Photo 32 of 53(Cottage_905_NE_32)

Basement utility room, view east.

Photo 33 of 53(Cottage_905_NE_33)

Basement staircase (southwest corner), view south.

Photo 34 of 53(Cottage_905_NE_34)

First floor vestibule showing double entries (southeast corner), view southeast.

Photo 35 of 53(Cottage_905_NE_35)

First floor vestibule showing entry (south side) and stairs to sanctuary, view southwest.

Photo 36 of 53(Cottage_905_NE_36)

First floor sanctuary, with pew seating (east end) in foreground, view west.

Photo 37 of 53(Cottage_905_NE_37)

First floor sanctuary, view southwest.

Photo 38 of 53(Cottage_905_NE_38)

First floor sanctuary showing balcony (east side), view east.

Photo 39 of 53(Cottage_905_NE_39)

First floor sanctuary, view northeast.

Photo 40 of 53(Cottage_905_NE_40)

First floor sanctuary looking towards rear (east) pew seating and mezzanine, view east.

Photo 41 of 53(Cottage_905_NE_41)

First floor sanctuary looking towards raised podium/altar, view west.

Photo 42 of 53(Cottage_905_NE_42)

First floor pew seating at rear (east) with mezzanine above, view north.

Photo 43 of 53(Cottage_905_NE_43)

First floor pew seating (east) and staircase to double entry (southeast corner), view southeast.

Photo 44 of 53(Cottage_905_NE_44)

First floor sanctuary and altar space, view south.

Photo 45 of 53(Cottage_905_NE_45)

First floor secondary entry (southwest corner) with stairs leading to sanctuary and altar space, view south.

Photo 46 of 53(Cottage_905_NE_46)

Wood lectern, view southeast.

Photo 47 of 53(Cottage_905_NE_47)

Wood lectern, view southwest.

Photo 48 of 53(Cottage_905_NE_48)

First floor office space (northeast corner), view southeast.

Photo 49 of 53(Cottage_905_NE_49)

Second floor space at south end, view northeast.

Photo 50 of 53(Cottage_905_NE_50)

Second floor office space (northwest corner), view northeast.

Photo 51 of 53(Cottage_905_NE_51)

Mezzanine staircase with view towards altar/choir space, view west.

Photo 52 of 53(Cottage_905_NE_52)

Mezzanine area overlooking sanctuary, view southwest.

Photo 53 of 53(Cottage_905_NE_53)

Overview of sanctuary and altar/choir space, view southwest.

Photographs



Photo 1 of 53 (Cottage_905_NE_01)

Overview of church along NE Cottage St., with parsonage to north (*right*), view southwest.



Photo 2 of 53 (Cottage_905_NE_02)

Overview of church from backside, with parsonage to north (*left*), view southeast.



Photo 3 of 53 (Cottage_905_NE_03)
South and west elevations, view northeast.



Photo 4 of 53 (Cottage_905_NE_04)
South and west elevations, with parking lot to west (*left*), view northeast.



Photo 5 of 53 (Cottage_905_NE_05)

Detail of plaque at southeast corner, view north.



Photo 6 of 53 (Cottage_905_NE_06)

South and east elevations, with parsonage to north (*right*), view northwest.



Photo 7 of 53 (Cottage_905_NE_07)

East elevation, view west.



Photo 8 of 53 (Cottage_905_NE_08)

Double-door entry at east elevation, view west.



Photo 9 of 53 (Cottage_905_NE_09)

Close-up of double-door entry at east elevation, view west



Photo 10 of 53 (Cottage_905_NE_10)

Close-up of basement and first-floor windows at east elevation, view northwest.



Photo 11 of 53 (Cottage_905_NE_11)

North and west elevations, view southeast.



Photo 12 of 53 (Cottage_905_NE_12)
North and west elevations, view southeast.

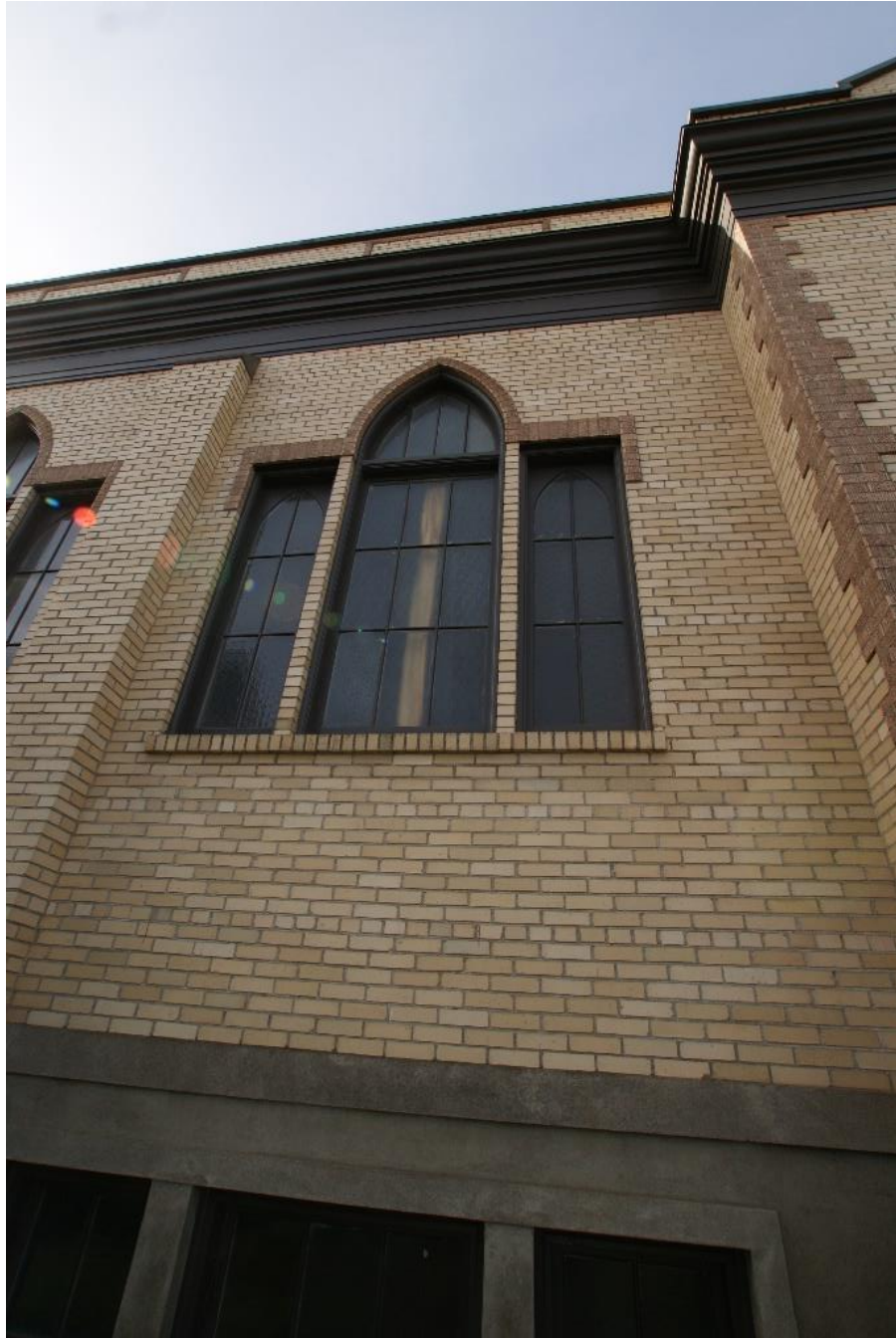


Photo 13 of 53 (Cottage_905_NE_13)

Close-up lancet window at north elevation, view south.



Photo 14 of 53 (Cottage_905_NE_14)

Raised entry at north elevation, view southwest.



Photo 15 of 53 (Cottage_905_NE_15)

First- and second-floor windows at west elevation (south side), view southeast.



Photo 16 of 53 (Cottage_905_NE_16)

West elevation, view east.



Photo 17 of 53 (Cottage_905_NE_17)

Basement entries at west elevation, view east.



Photo 18 of 53 (Cottage_905_NE_18)

Basement windows at west elevation, view southeast.



Photo 19 of 53 (Cottage_905_NE_19)

First- and second-floor windows at west elevation (north side), view east.



Photo 20 of 53 (Cottage_905_NE_20)

Basement interior showing central space, view northwest.



Photo 21 of 53 (Cottage_905_NE_21)

Basement interior showing stairwell and classroom (east side), view east.



Photo 22 of 53 (Cottage_905_NE_22)

Basement interior showing classroom (northeast corner), view northeast.

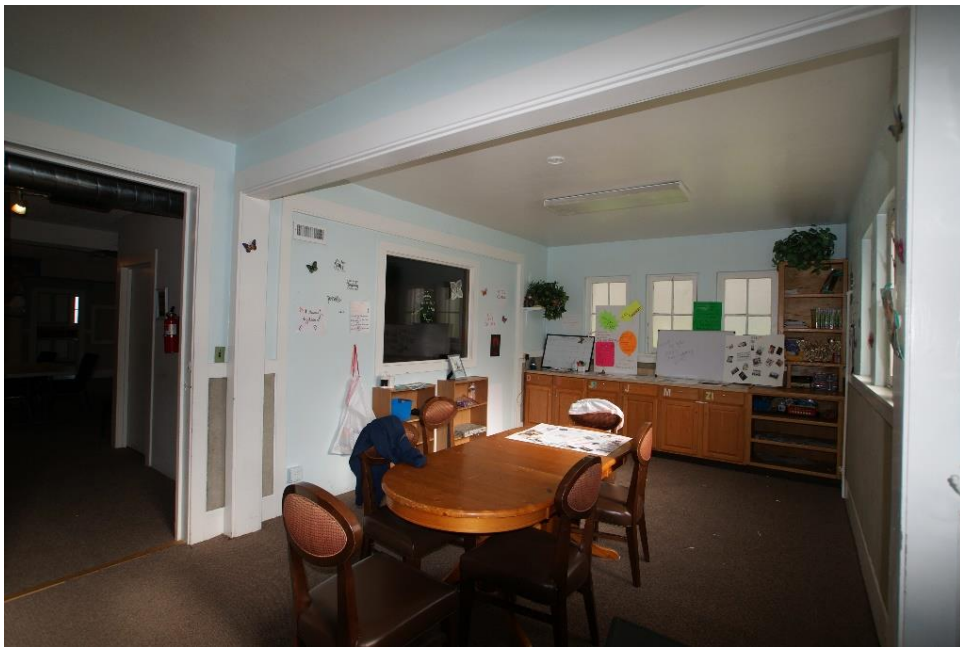


Photo 23 of 53 (Cottage_905_NE_23)

Basement interior showing classroom (northeast corner), view north.



Photo 24 of 53 (Cottage_905_NE_24)

Basement interior showing classroom (northeast corner), view southwest.



Photo 25 of 53 (Cottage_905_NE_25)

Basement interior door, view northwest.



Photo 26 of 53 (Cottage_905_NE_26)

Basement interior showing central space, view southeast.



Photo 27 of 53 (Cottage_905_NE_27)

Basement interior showing kitchen (northwest corner), view northwest.



Photo 28 of 53 (Cottage_905_NE_28)

Basement interior showing kitchen, view east.



Photo 29 of 53 (Cottage_905_NE_29)

Basement interior doors, view southeast.



Photo 30 of 53 (Cottage_905_NE_30)

Basement hallway (southwest side), view west.



Photo 31 of 53 (Cottage_905_NE_31)
Basement utility room, view northwest.



Photo 32 of 53 (Cottage_905_NE_32)
Basement utility room, view east.



Photo 33 of 53 (Cottage_905_NE_33)

Basement staircase (southwest corner), view south.



Photo 34 of 53 (Cottage_905_NE_34)

First floor vestibule showing double entries (southeast corner), view southeast.

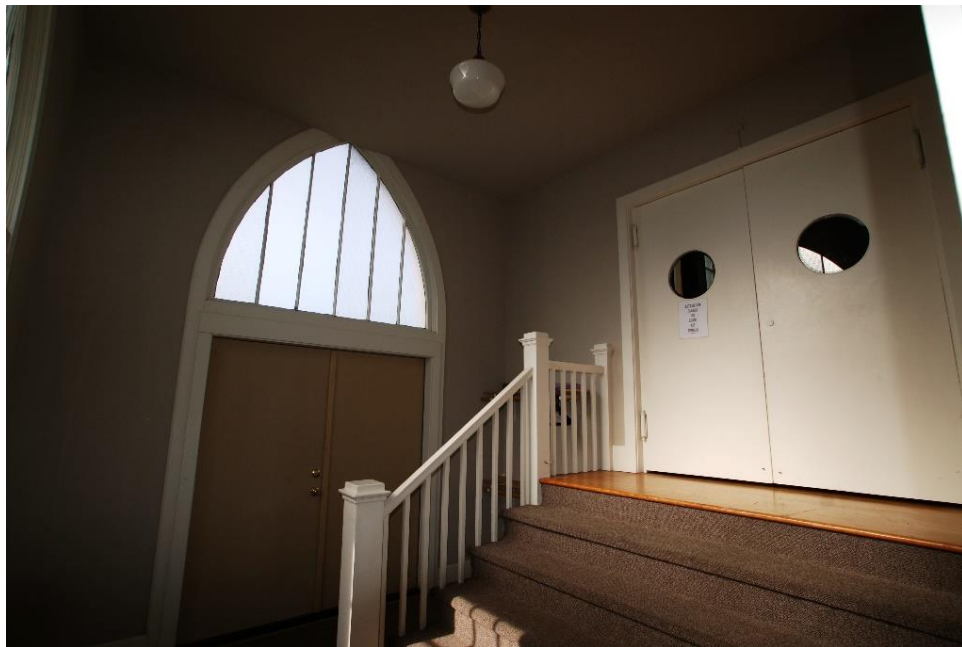


Photo 35 of 53 (Cottage_905_NE_35)

First floor vestibule showing entry (south side) and stairs to sanctuary, view southwest.



Photo 36 of 53 (Cottage_905_NE_36)

First floor sanctuary, with pew seating (east end) in foreground, view west.



Photo 37 of 53 (Cottage_905_NE_37)

First floor sanctuary, view southwest.



Photo 38 of 53 (Cottage_905_NE_38)

First floor sanctuary showing balcony (east side), view east.



Photo 39 of 53 (Cottage_905_NE_39)

First floor sanctuary, view northeast.



Photo 40 of 53 (Cottage_905_NE_40)

First floor sanctuary looking towards rear (east) pew seating and mezzanine, view east.



Photo 41 of 53 (Cottage_905_NE_41)

First floor sanctuary looking towards raised podium/altar, view west.



Photo 42 of 53 (Cottage_905_NE_42)

First floor pew seating at rear (east) with mezzanine above, view north.



Photo 43 of 53 (Cottage_905_NE_43)

First floor pew seating (east) and staircase to double entry (southeast corner), view southeast.



Photo 44 of 53 (Cottage_905_NE_44)

First floor sanctuary and altar space, view south.



Photo 45 of 53 (Cottage_905_NE_45)

First floor secondary entry (southwest corner) with stairs leading to sanctuary and altar space, view south.



Photo 46 of 53 (Cottage_905_NE_46)

Wood lectern, view southeast.



Photo 47 of 53 (Cottage_905_NE_47)

Wood lectern, view southwest.

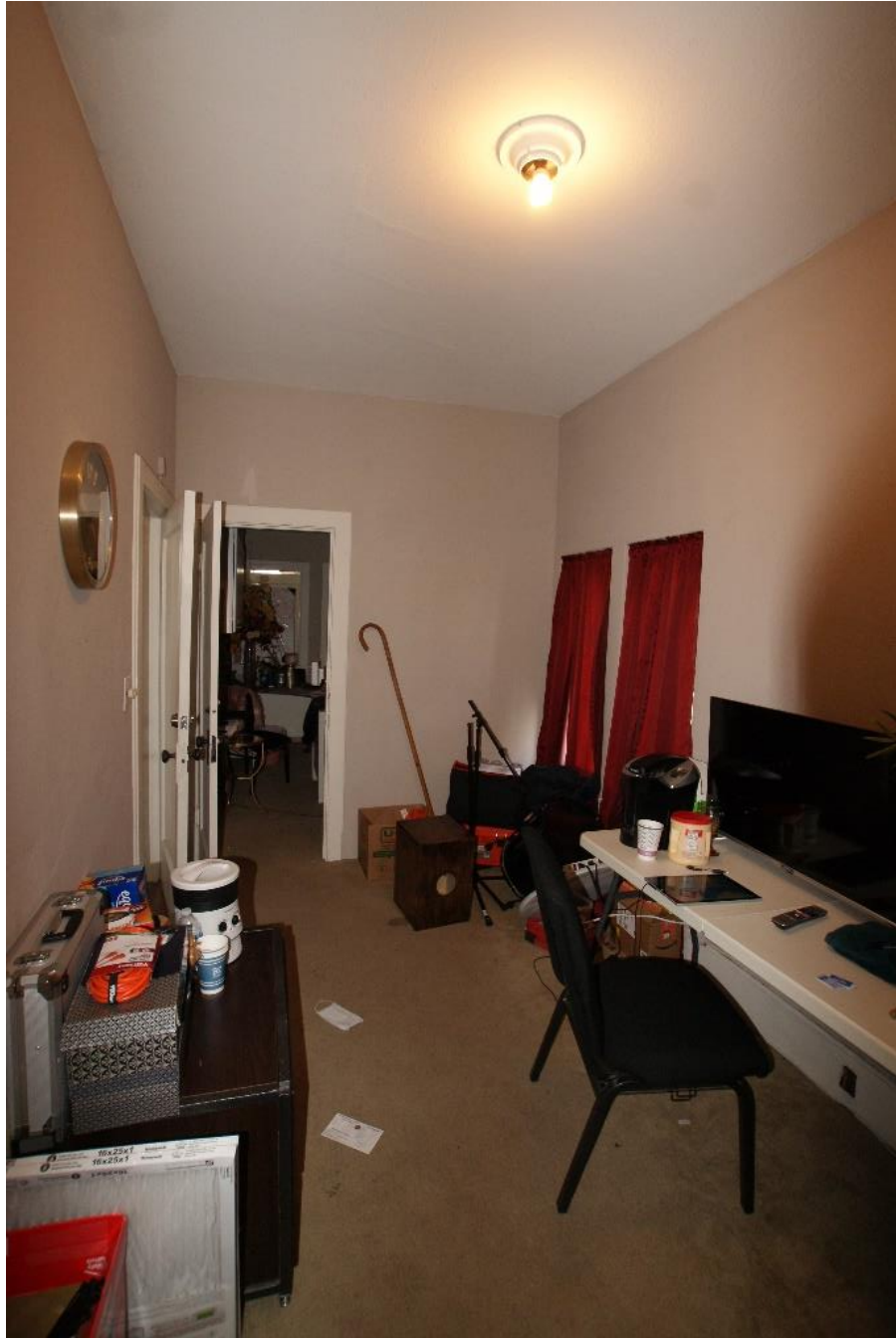


Photo 48 of 53 (Cottage_905_NE_48)

First floor office space (northeast corner), view southeast.



Photo 49 of 53 (Cottage_905_NE_49)

Second floor space at south end, view northeast.



Photo 50 of 53 (Cottage_905_NE_50)

Second floor office space (northwest corner), view northeast.



Photo 51 of 53 (Cottage_905_NE_51)

Mezzanine staircase with view towards altar/choir space, view west.



Photo 52 of 53 (Cottage_905_NE_52)

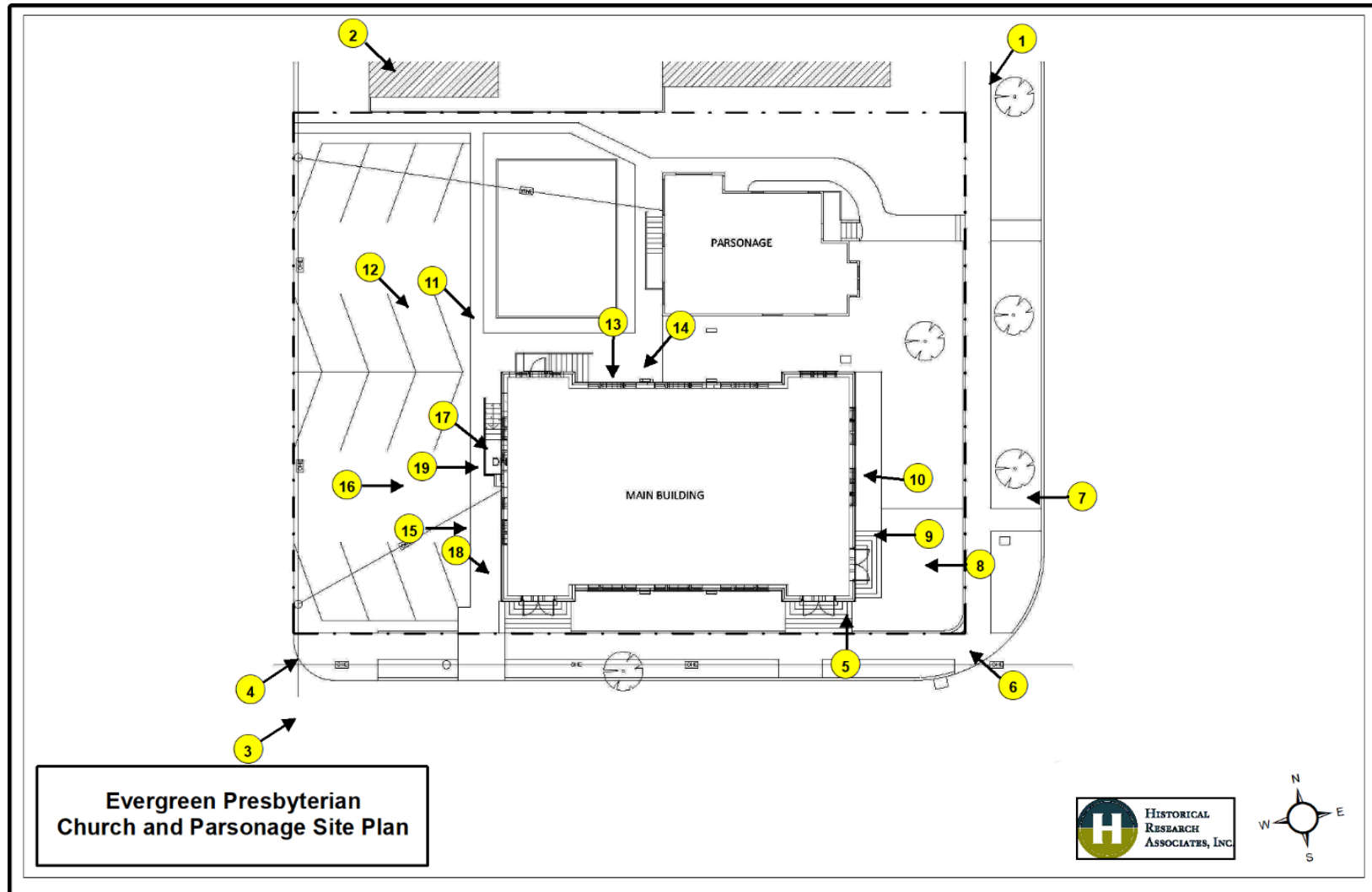
Mezzanine area overlooking sanctuary, view southwest.



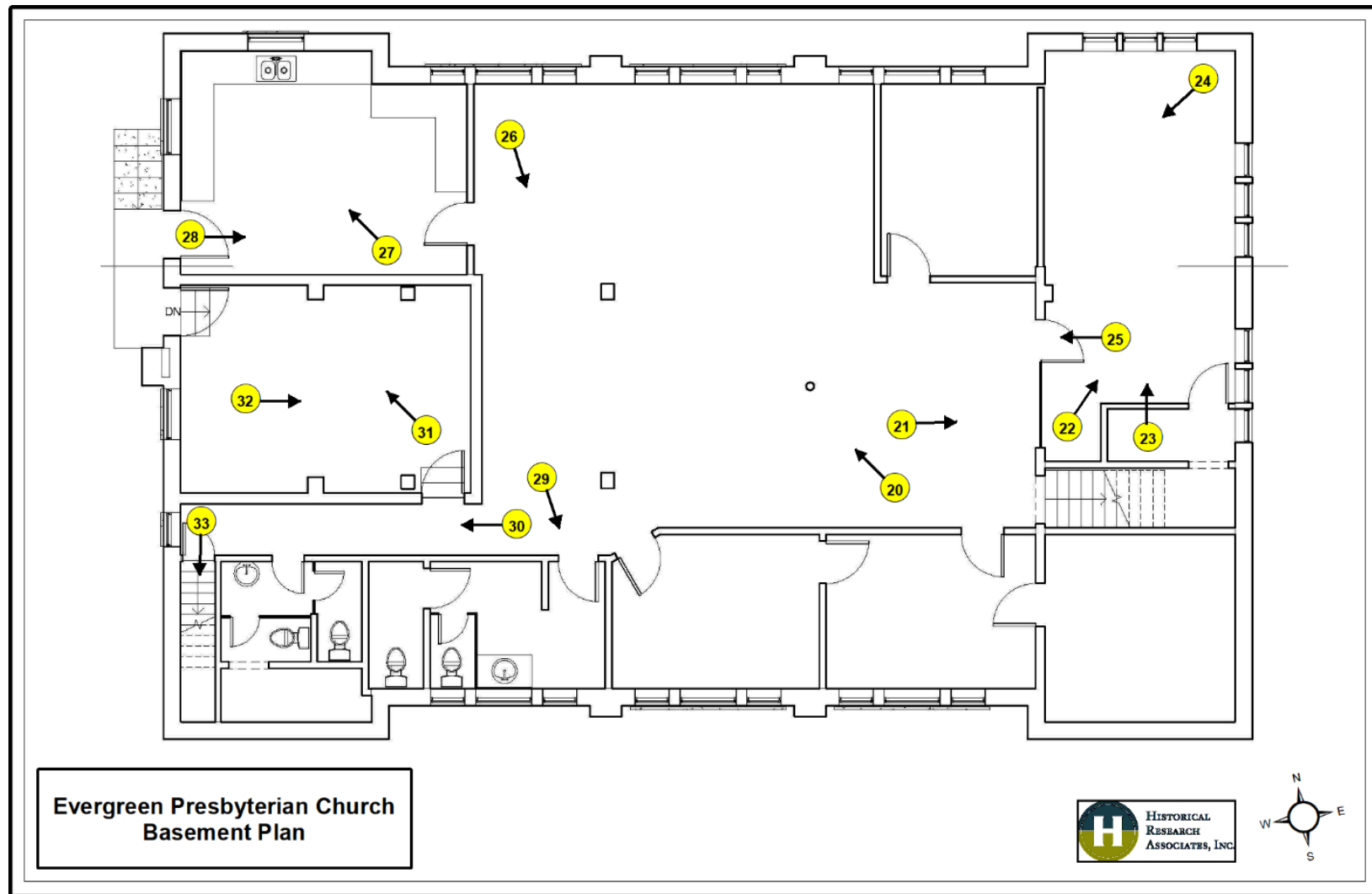
Photo 53 of 53 (Cottage_905_NE_53)

Overview of sanctuary and altar/choir space, view southwest.

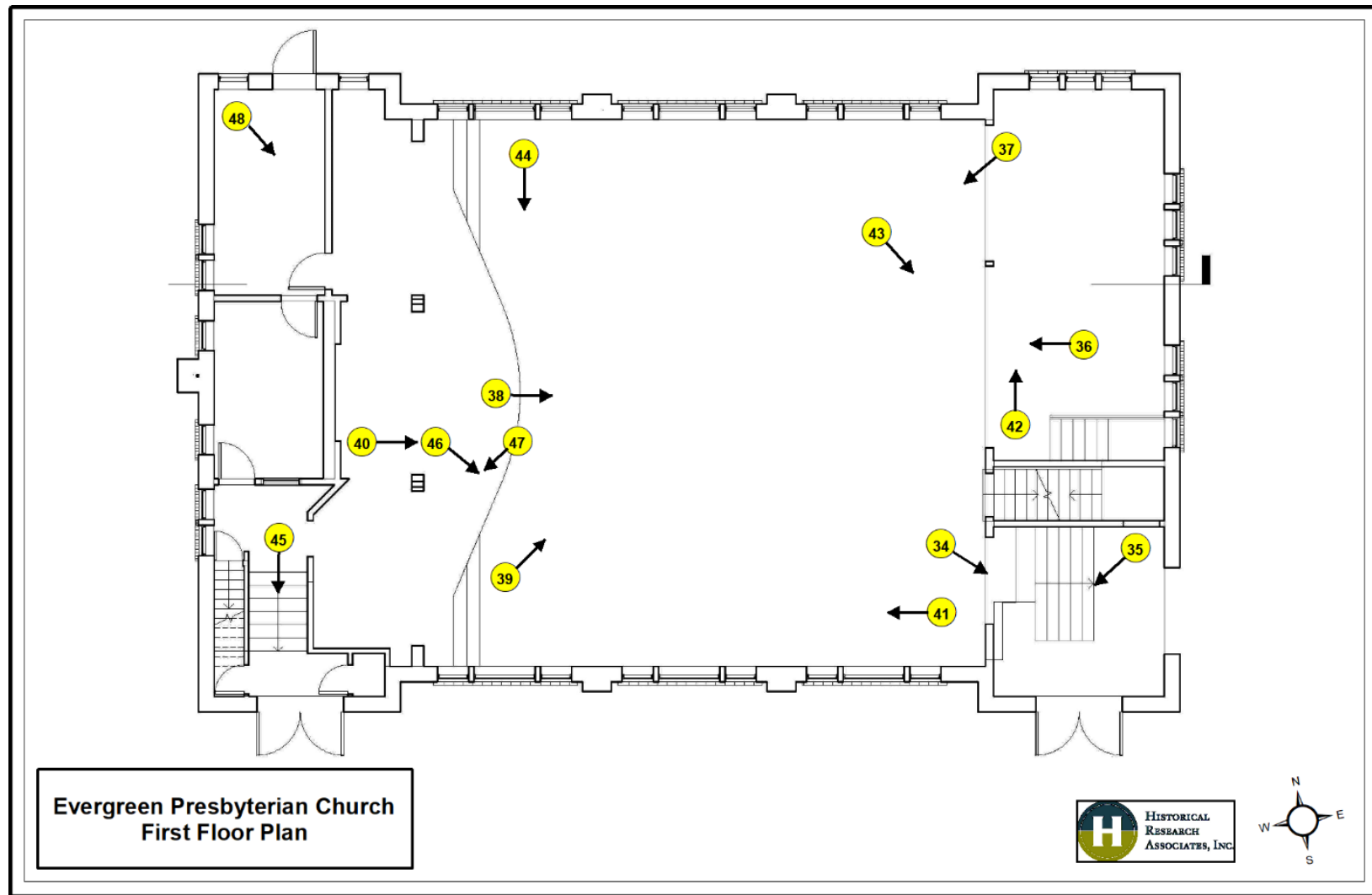
Photograph Location Maps



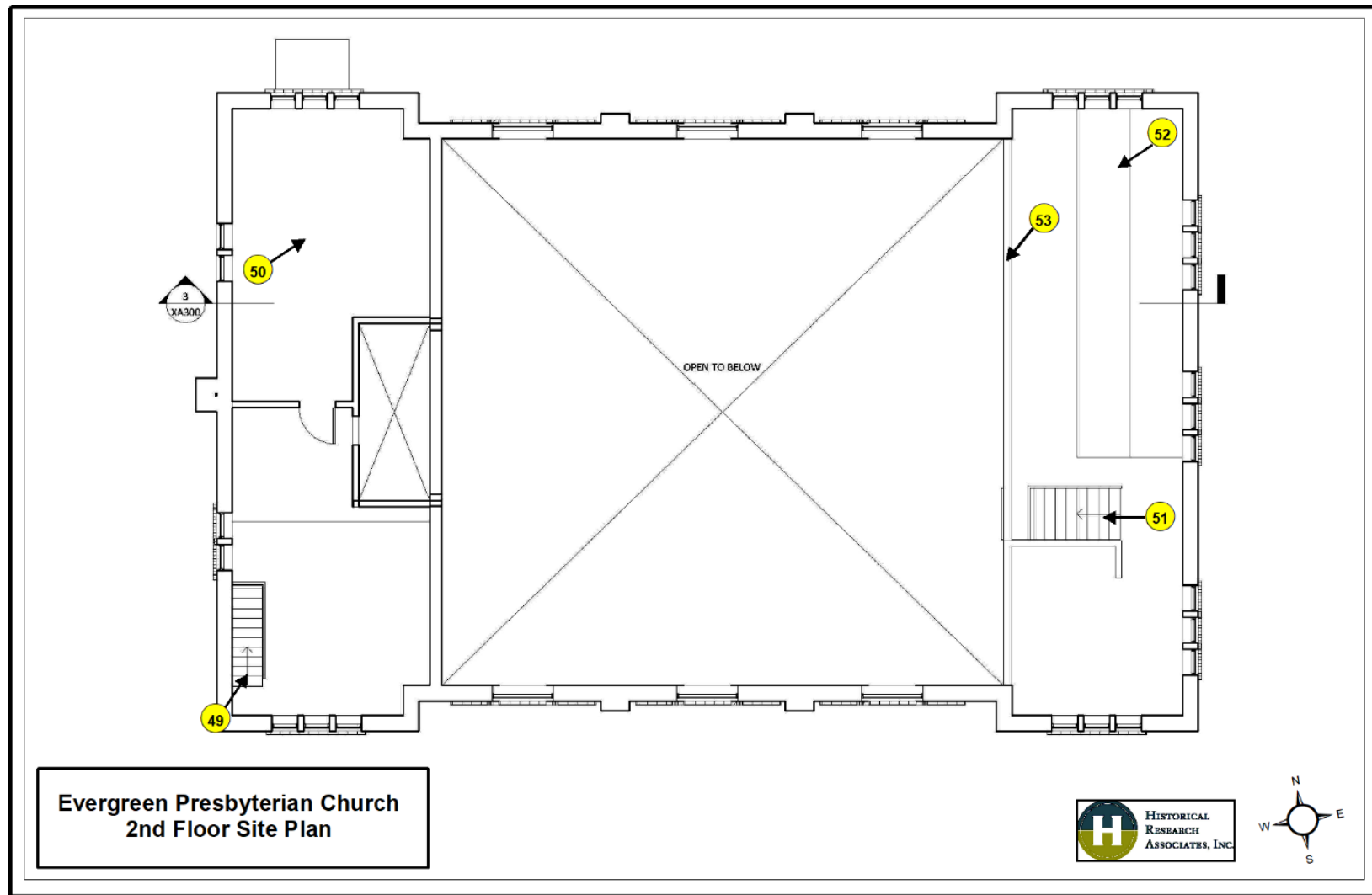
First German Baptist Church (Evergreen Presbyterian Church)—Exterior: Photos 1–19.



First German Baptist Church (Evergreen Presbyterian Church)—Basement. Photos 20–33.



First German Baptist Church (Evergreen Presbyterian Church)—First Floor. Photos 34–48.



First German Baptist Church (Evergreen Presbyterian Church)—Second Floor. Photos 49–53.

APPENDIX C: First German Baptist Church Parsonage— Photograph Index; Photographs; Photograph Location Maps

Photograph Index

FIRST GERMAN BAPTIST CHURCH PARSONAGE

(Evergreen Presbyterian Church Parsonage)

925 NE Cottage St., Salem, Marion County, Oregon. Libby Provost, Photographer, March 2022.

Photo 1 of 35 (Cottage_925_NE_01)

Front (east) elevation, view along NE Cottage St., with church to south (*left*), view southwest.

Photo 2 of 35 (Cottage_925_NE_02)

Front and north elevations, with church in background (*left*), view southwest.

Photo 3 of 35 (Cottage_925_NE_03)

Front (east) elevation, with church to south (*left*), view west.

Photo 4 of 35 (Cottage_925_NE_04)

Detail of front steps with engraving “Baptist Parsonage” on bottom step, view west.

Photo 5 of 35 (Cottage_925_NE_05)

Front porch showing wood railing, scrolled posts and decorative brackets, view west.

Photo 6 of 35 (Cottage_925_NE_06)

Close-up of front porch, view northeast.

Photo 7 of 35 (Cottage_925_NE_07)

Side door entry at northwest corner, view west.

Photo 8 of 35 (Cottage_925_NE_08)

Rear (west) and north elevations, with church in background, view southeast.

Photo 9 of 35 (Cottage_925_NE_09)

Rear (west) and north elevations, view southeast.

Photo 10 of 35 (Cottage_925_NE_10)

Rear (west) and south elevations, view northeast.

Photo 11 of 35(Cottage_925_NE_11)
Rear (west) and south elevations, view east.

Photo 12 of 34(Cottage_925_NE_12)
Front (east) and south elevations, showing projecting bay window and scrollwork in gable, view northwest.

Photo 13 of 35(Cottage_925_NE_13)
Rear staircase (northwest corner) to basement level, view south.

Photo 14 of 35(Cottage_925_NE_14)
Northwest corner of basement, view northeast.

Photo 15 of 35(Cottage_925_NE_15)
Main basement area (south side), view northwest.

Photo 16 of 35(Cottage_925_NE_16)
First floor staircase (northeast corner), showing turned wood balusters, view northwest.

Photo 17 of 35(Cottage_925_NE_17)
First floor staircase, view northeast.

Photo 18 of 35(Cottage_925_NE_18)
First floor staircase, view southwest.

Photo 19 of 35(Cottage_925_NE_19)
First floor living room and dining room space, view southwest.

Photo 20 of 35(Cottage_925_NE_20)
First floor dining room showing built-in cabinet, with view to bathroom (southwest corner), kitchen (northwest corner), and study (north), view northwest.

Photo 21 of 35(Cottage_925_NE_21)
Built-in cabinet in dining room, view west.

Photo 22 of 35(Cottage_925_NE_22)
First floor living room, showing bay window, view southeast.

Photo 23 of 35(Cottage_925_NE_23)
Living room door showing bullseye trim, view north.

Photo 24 of 35(Cottage_925_NE_24)
First floor bathroom (southwest corner), view west.

Photo 25 of 35(Cottage_925_NE_25)

First floor study (north side), view northwest.

Photo 26 of 35(Cottage_925_NE_26)

Door to kitchen (northwest corner), view northwest.

Photo 27 of 35(Cottage_925_NE_27)

First floor kitchen (northwest corner), view northeast.

Photo 28 of 35(Cottage_925_NE_28)

First floor kitchen (northwest corner), view northwest.

Photo 29 of 35(Cottage_925_NE_29)

First floor sunporch (northwest corner), showing rear staircase to basement, view west.

Photo 30 of 35(Cottage_925_NE_30)

First floor study (north side), view southwest.

Photo 31 of 35(Cottage_925_NE_31)

Second floor hallway, view east.

Photo 32 of 35(Cottage_925_NE_32)

Second floor hallway, view west.

Photo 33 of 35(Cottage_925_NE_33)

Second floor bedroom (southeast corner), view northeast.

Photo 34 of 35(Cottage_925_NE_34)

Second floor bedroom (northwest corner), view southwest.

Photo 35 of 35(Cottage_925_NE_35)

Second floor study (southwest corner), view southwest.

Photographs



Photo 1 of 35 (Cottage_925_NE_01)

Front (east) elevation, view along NE Cottage St., with church to south (*left*), view southwest.



Photo 2 of 35 (Cottage_925_NE_02)

Front and north elevations, with church in background (*left*), view southwest.



Photo 3 of 35 (Cottage_925_NE_03)

Front (east) elevation, with church to south (*left*), view west.



Photo 4 of 35 (Cottage_925_NE_04)

Detail of front steps with engraving "Baptist Parsonage" on bottom step, view west.



Photo 5 of 35 (Cottage_925_NE_05)

Front porch showing wood railing, scrolled posts and decorative brackets, view west.



Photo 6 of 35 (Cottage_925_NE_06)

Close-up of front porch, view northeast.



Photo 7 of 35 (Cottage_925_NE_07)

Side door entry at northwest corner, view west.



Photo 8 of 35 (Cottage_925_NE_08)

Rear (west) and north elevations, with church in background, view southeast.



Photo 9 of 35 (Cottage_925_NE_09)

Rear (west) and north elevations, view southeast.



Photo 10 of 35 (Cottage_925_NE_10)

Rear (west) and south elevations, view northeast.



Photo 11 of 35 (Cottage_925_NE_11)

Rear (west) and south elevations, view east.



Photo 12 of 34 (Cottage_925_NE_12)

Front (east) and south elevations, showing projecting bay window and scrollwork in gable, view northwest.



Photo 13 of 35 (Cottage_925_NE_13)

Rear staircase (northwest corner) to basement level, view south.



Photo 14 of 35 (Cottage_925_NE_14)

Northwest corner of basement, view northeast.



Photo 15 of 35 (Cottage_925_NE_15)

Main basement area (south side), view northwest.



Photo 16 of 35 (Cottage_925_NE_16)

First floor staircase (northeast corner), showing turned wood balusters, view northwest.

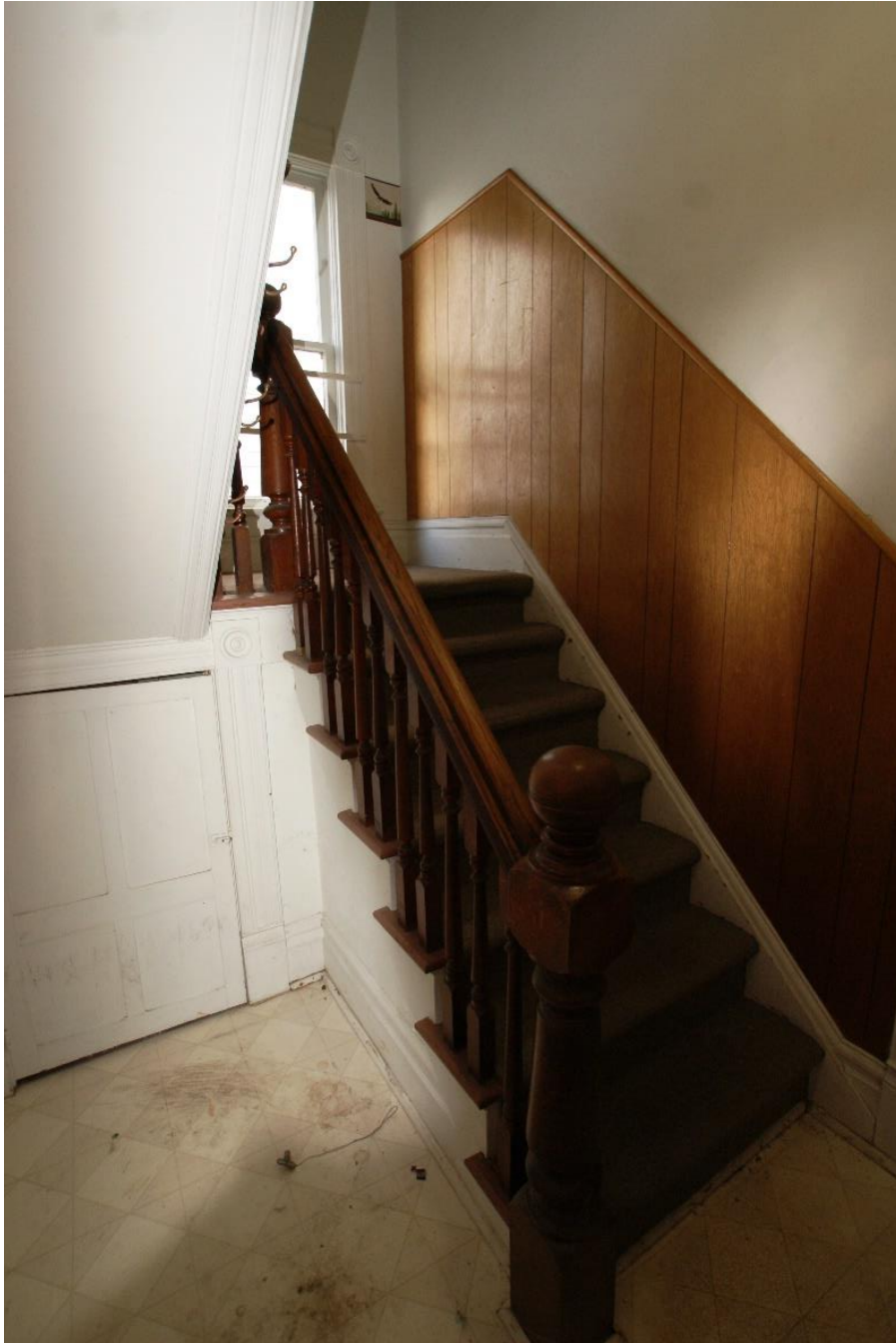


Photo 17 of 35 (Cottage_925_NE_17)

First floor staircase, view northeast.



Photo 18 of 35 (Cottage_925_NE_18)

First floor staircase, view southwest.



Photo 19 of 35 (Cottage_925_NE_19)

First floor living room and dining room space, view southwest.



Photo 20 of 35 (Cottage_925_NE_20)

First floor dining room showing built-in cabinet, with view to bathroom (southwest corner), kitchen (northwest corner), and study (north), view northwest.



Photo 21 of 35 (Cottage_925_NE_21)

Built-in cabinet in dining room, view west.



Photo 22 of 35 (Cottage_925_NE_22)

First floor living room, showing bay window, view southeast.



Photo 23 of 35 (Cottage_925_NE_23)

Living room door showing bullseye trim, view north.

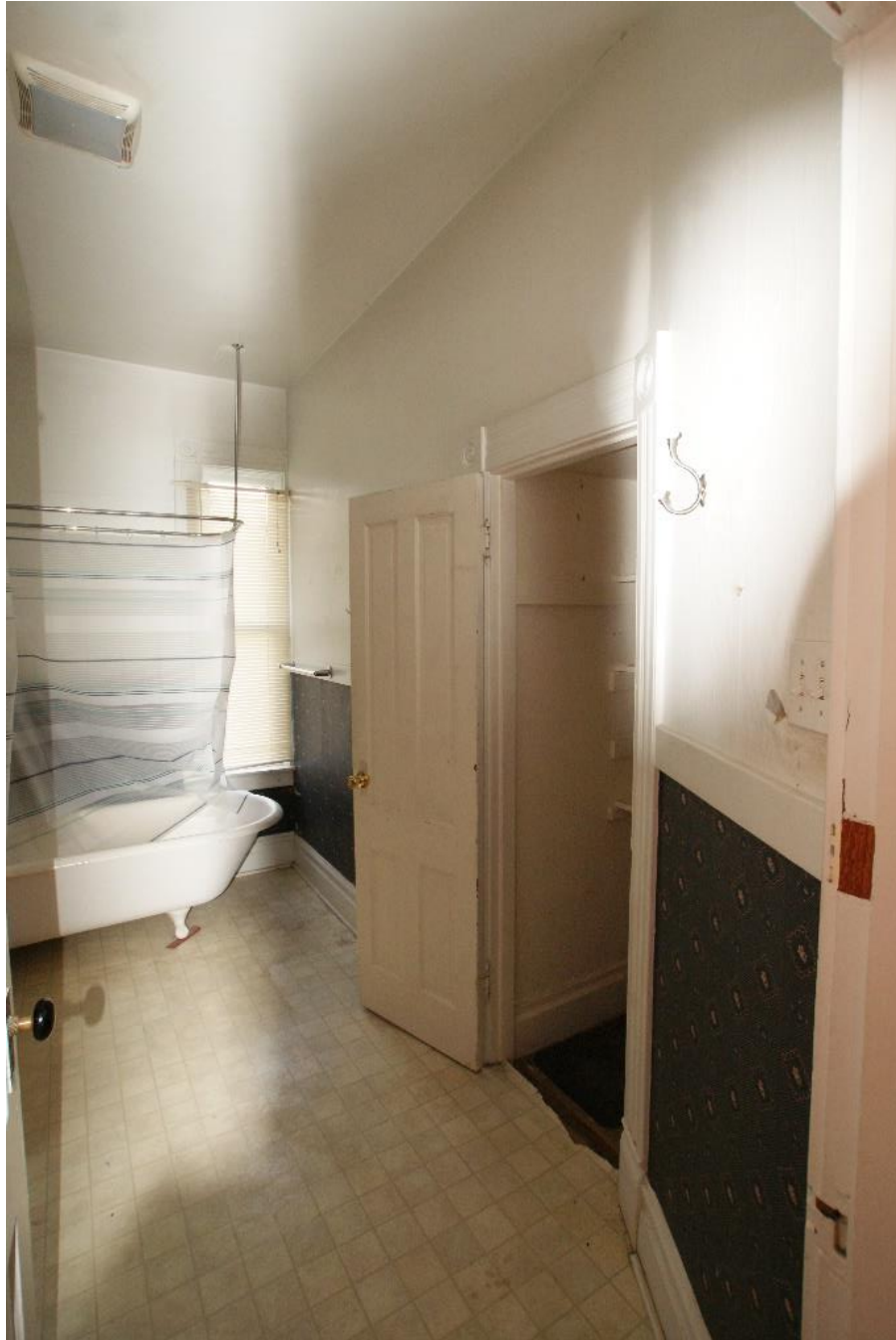


Photo 24 of 35 (Cottage_925_NE_24)

First floor bathroom (southwest corner), view west.



Photo 25 of 35 (Cottage_925_NE_25)

First floor study (north side), view northwest.



Photo 26 of 35 (Cottage_925_NE_26)

Door to kitchen (northwest corner), view northwest.



Photo 27 of 35 (Cottage_925_NE_27)

First floor kitchen (northwest corner), view northeast.



Photo 28 of 35 (Cottage_925_NE_28)

First floor kitchen (northwest corner), view northwest.



Photo 29 of 35 (Cottage_925_NE_29)

First floor sunporch (northwest corner), showing rear staircase to basement, view west.



Photo 30 of 35 (Cottage_925_NE_30)

First floor study (north side), view southwest.



Photo 31 of 35 (Cottage_925_NE_31)

Second floor hallway, view east.



Photo 32 of 35 (Cottage_925_NE_32)

Second floor hallway, view west.



Photo 33 of 35 (Cottage_925_NE_33)

Second floor bedroom (southeast corner), view northeast.



Photo 34 of 35 (Cottage_925_NE_34)

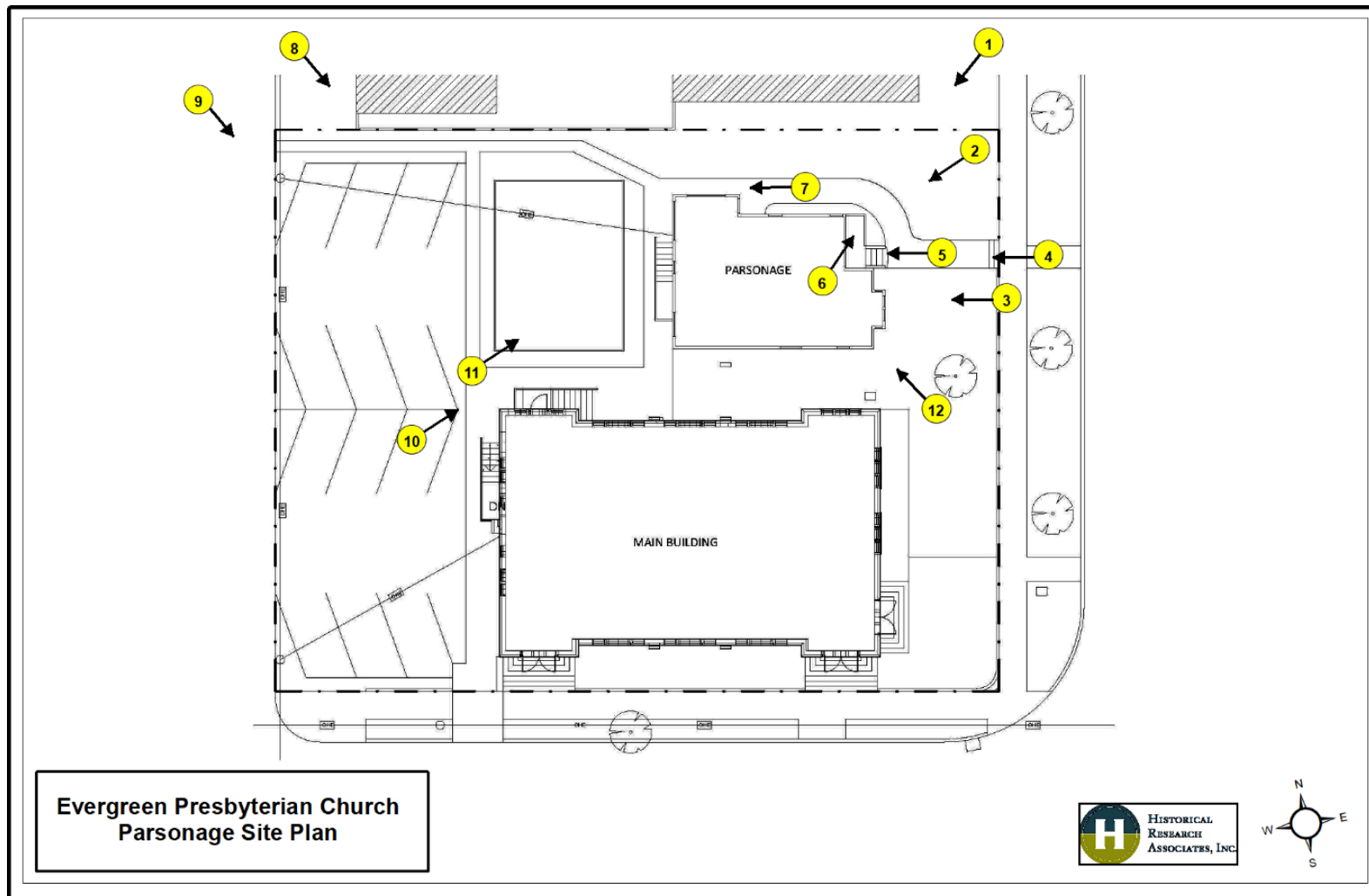
Second floor bedroom (northwest corner), view southwest.



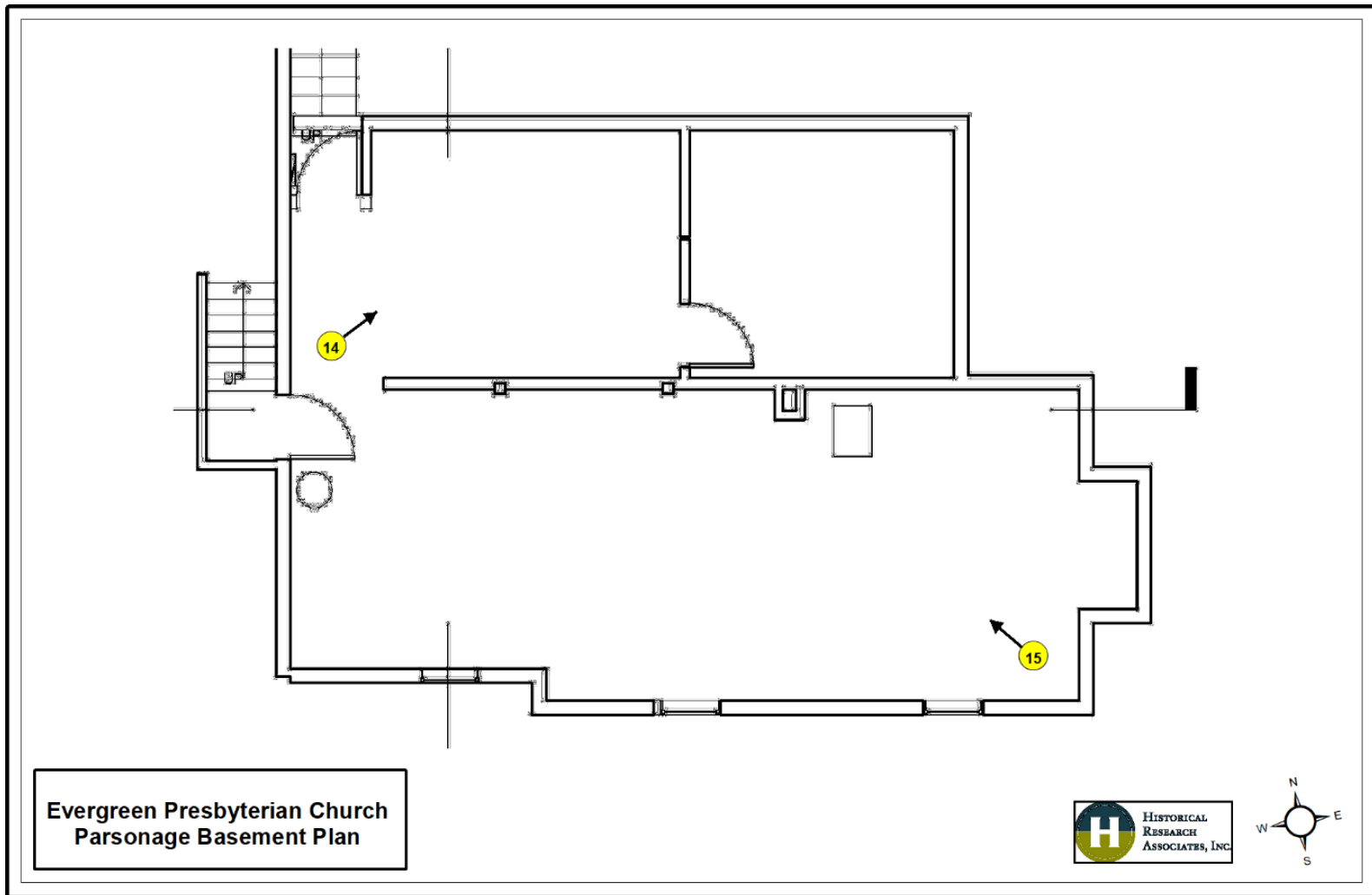
Photo 35 of 35 (Cottage_925_NE_35)

Second floor study (southwest corner), view southwest.

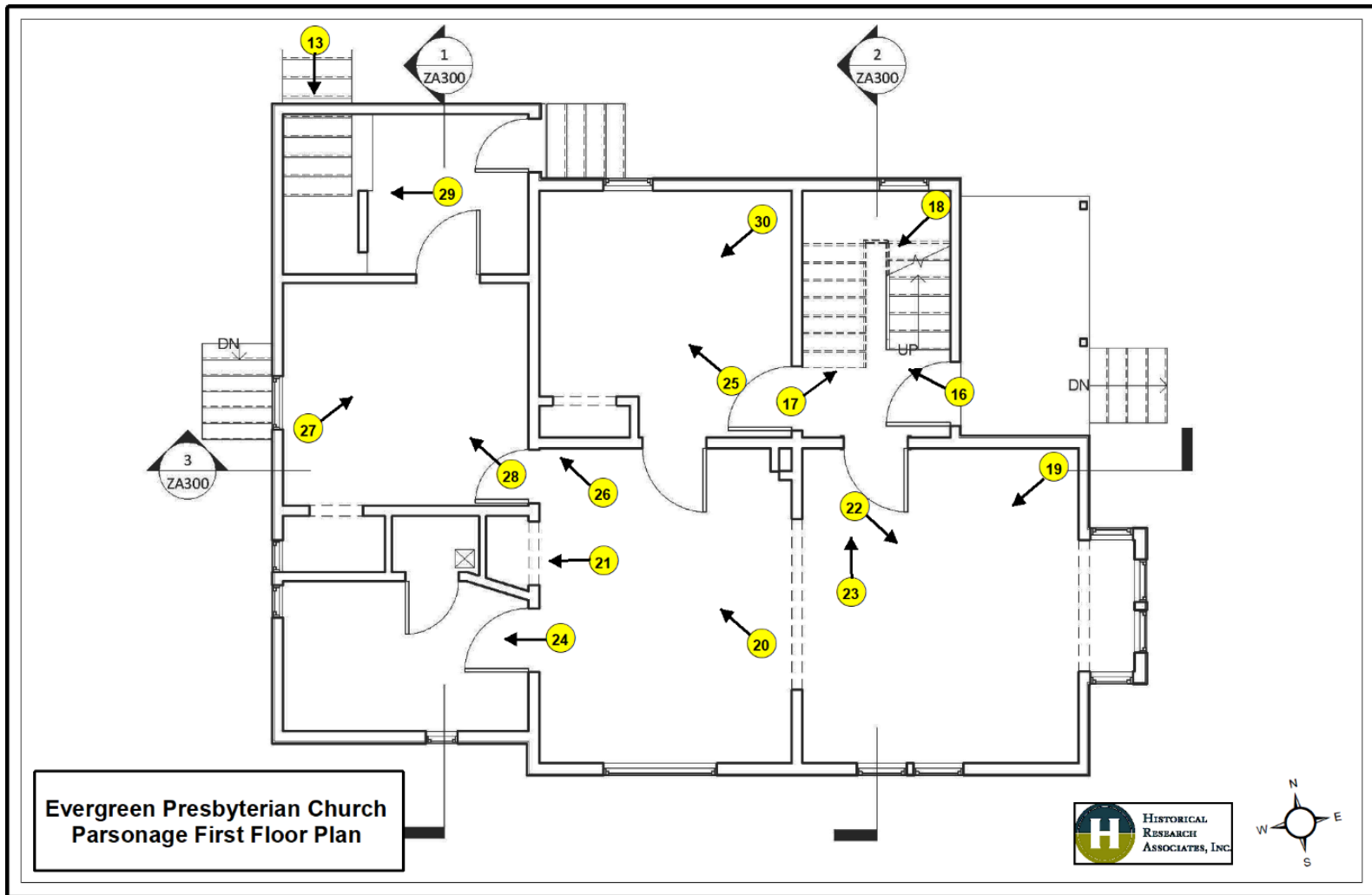
Photograph Location Maps



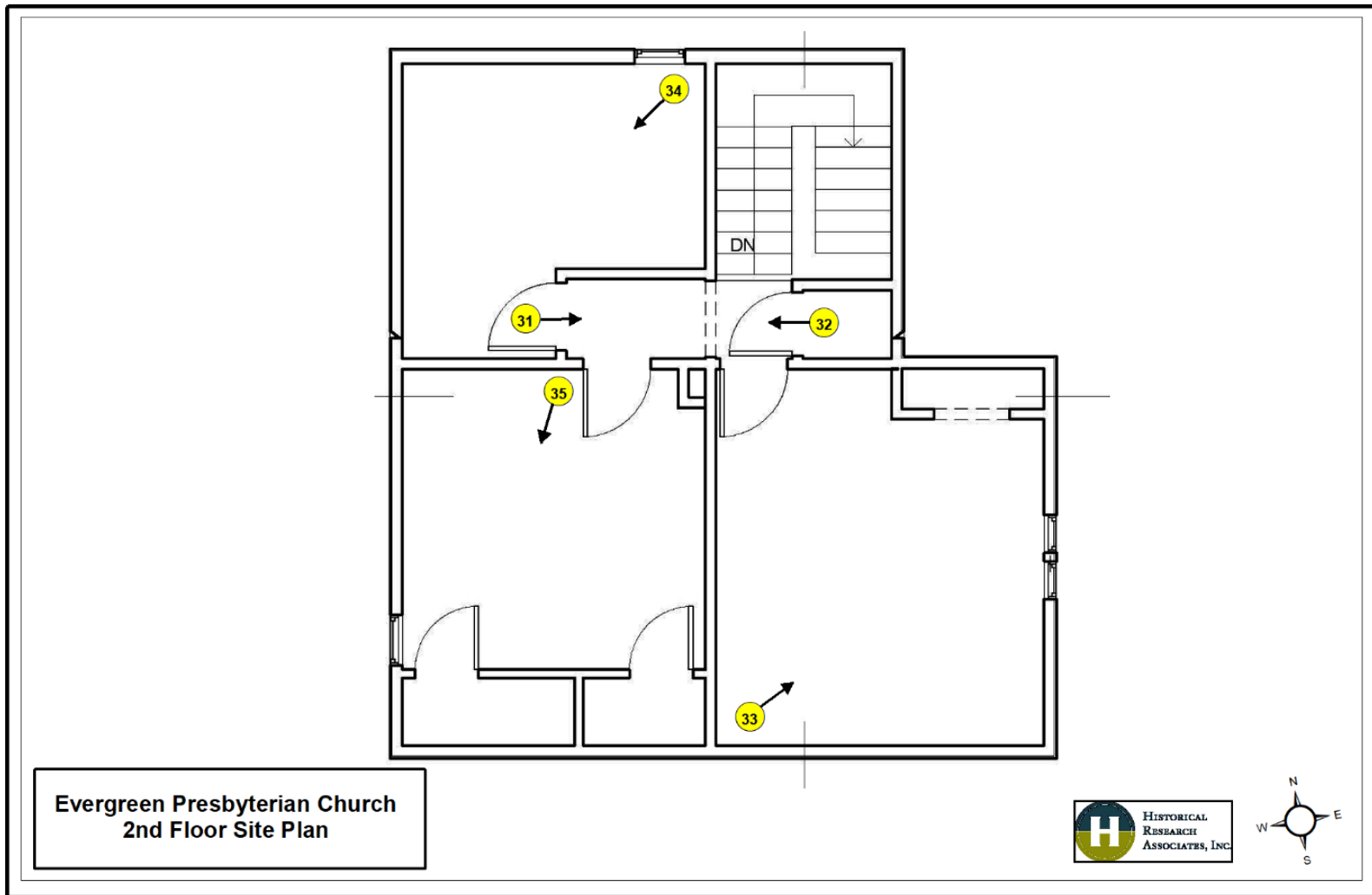
First German Baptist Church Parsonage (Evergreen Presbyterian Church Parsonage)—Exterior. Photos 01–12.



First German Baptist Church Parsonage (Evergreen Presbyterian Church Parsonage)—Basement. Photos 14–15.



First German Baptist Church Parsonage (Evergreen Presbyterian Church Parsonage)—First floor. Photos 13, 16–30.



First German Baptist Church Parsonage (Evergreen Presbyterian Church Parsonage)—Second floor. Photos 31–35.