



City of Salem
Salem Parks and Recreation Advisory Board

September 14, 2023

5:30 p.m.

Online ([Zoom](#))

Si necesita ayuda para comprender esta información, por favor llame 503-588-6211.

Para asistencia en español, llame al 503-540-2489.

PARTICIPANTS

Board Members

Dylan McDowell, Chair; Keith Norris, Vice-Chair; Alan Alexander; Woody Dukes; Rick Hartwig; Alan Holland; Joan Lloyd; Debbie Miller

Staff

Rob Romanek, Parks Planning Manager; Jennifer Kellar, Parks and Recreation Division Manager; Becky George, Recreation Supervisor; Milan Davis, City Urban Forester/Parks Supervisor III; Marc Weinstein, Assistant City Attorney

AGENDA

1. Welcome and Call to Order
2. Approval of July 2023 Minutes
3. Public Comment – Appearance of persons wishing to address the board on any matter other than those which appear on this agenda.
4. Council Liaison Updates
5. Board Items/Presentations
 - a. Training – Public Meetings, Public Records, and Ethics for Public Officials
 - b. Support of an application to the Oregon Watershed Enhancement Board to treat invasive aquatic plants in Oxbow Slough
 - c. CIP Discussion
 - d. Neighborhood Association Engagement
6. Board Member Updates
7. Information Reports – written
 - a. News from Mission Street Park Conservancy

- b. Parks Planning Update
 - c. Parks Operations & SPIF Update
 - d. Recreation Services Update
 - e. Urban Forestry Update
 - f. Parks Damage Report
8. New Business
9. Adjourn

Next Meeting: October 12, 2023

This meeting is being conducted virtually, with remote attendance by the governing body. No in-person attendance is possible. Interested persons may view the meeting online on [YouTube](#). Please submit written comments on agenda items, or pre-register to provide Public Comment on items not on the agenda, by 5 p.m. or earlier one day prior to the day of the meeting at salemparks@cityofsalem.net.

Special accommodations are available, upon request, for persons with disabilities or those needing sign language interpretation, or languages other than English. To request accommodations or services, please call 503-588-6211 (TTD/TTY 503-588-6439) at least two business days in advance.

It is the City of Salem's policy to assure that no person shall be discriminated against on the grounds of race, religion, color, sex, marital status, familial status, national origin, age, mental or physical disability, sexual orientation, gender identity, source of income and housing status, as provided by Salem Revised Code 97. The City of Salem also fully complies with Title VI of the Civil Rights Act of 1964, Americans with Disabilities Act of 1990, and related statutes and regulations, in all programs and activities.

City of Salem Salem Parks and Recreation Advisory Board

July 13, 2023

[Online Meeting](#)

Minutes - Draft

Members Present

Dylan McDowell
Keith Norris
Alan Alexander
Woody Dukes
Rick Hartwig
Alan Holland
Joan Lloyd
Debbie Miller

Members Absent

Staff Present

Rob Romanek
Becky George
Mitchell Jones

1. Call to Order

Welcome and call to order by Chair McDowell at 5:31 p.m.

2. Roll Call

All members present.

3. Approval of Minutes

Member Hartwig moved to approve the minutes from June 8, 2023. Vice-Chair Norris seconded. The motion passed unanimously.

4. Public Comment

None.

5. SPRAB's City Council liaison, Councilor Micki Varney, shared information from the City Council:

- The Safe and Secure Community Payroll Tax passed 5-4. The .814% tax on the payroll of work performed in Salem is intended to augment general fund revenue to benefit Fire and Police and fund programs for unsheltered residents because other funding sources are running out. The infrastructure bond includes funds to build a new fire station, but we won't be able to staff it due to a deficit in the general fund. City Council previously had the payroll tax on the ballot in 2020 but was able to use other, one-time funding options, so removed it from the ballot. In 2019, a revenue steering committee looked at many other revenue sources, but the payroll tax was the one option that would provide funding to fill the revenue gap. Member Holland asked about other communities with a payroll tax and what rates they use. Eugene has an employee tax and employer tax. Salem looked at three different rate tiers and decided on the highest rate to fund the unsheltered programs.
- Salem Housing Authority has a new agreement with Orchard Park Limited

Partners to provide 224 apartments for low-income residents. This is a big assistance to the community to benefit unsheltered residents.

- Member Alexander appreciates Councilor Varney sharing with SPRAB. He asked about enforcement of the park camping ban. The ban on camping in city parks is being enforced using the available personnel and resources. Polk County and its partner, Mid-Willamette Valley Homeless Alliance, applied for and received a \$1 million grant to start establishing services which will help take pressure off Wallace Marine Park. Member Alexander asked why the payroll tax wasn't referred to the voters. Councilor Varney explained that funds need to be generated as soon as possible and councilors don't have the resources to put it on the ballot and advocate for it in a timely manner. Waiting to put it on the November 2024 ballot would mean cutting multiple services. Chair McDowell appreciates Councilor Varney's hard work with the Council and her willingness to share with the board. Councilor Varney encouraged board members to email her with questions or comments and know that councilors will consider other funding options also.

6. Board Items/Presentations

Rob Romanek shared that Member Miller made a neighborhood association presentation to SWAN and Chair McDowell is scheduled to give a presentation to Northgate Neighborhood Association next. Member Miller is scheduled to present to SESNA in August. Chair McDowell asked Member Miller to share her thoughts and/or feedback on her presentation. She reported that she thought the slides were great and Rob was able to help answer questions ahead of time. There were other questions about cleanups in the Minto-Brown slough and trash near railroad tracks. She didn't know if the City or Parks would help with that.

Member Alexander said he was scheduled to present to Sunnyslope Neighborhood Association in July but has been rescheduled for the August meeting. Member Holland will attend the West Salem Neighborhood Association meeting in August. Vice-Chair Norris will hopefully meet with his neighborhood associations in September and Member Hartwig hasn't heard back from either of his assigned associations yet. Member Lloyd hopes to meet with the NEN Neighborhood Association board in September or October.

Member Miller asked if there are any neighborhood associations that don't have an active Parks representative because there was \$20,000 left over from last year's SPIF grant money. Rob said that some associations have experienced a lot of change in recent years and may benefit from SPRAB's outreach efforts. He recommended prioritizing presentations to NOLA, ELNA and SEMCA and is willing to consider attending meetings with board members when they give their presentations. Forward questions to him and he can respond, and also distribute the information to other members to help everyone be more prepared for their presentations.

Member Holland asked what the treatment is if poison oak is identified in the parks. A pesticide can be applied if the poison oak is in an active part of the park.

7. Board Member Updates

Chair McDowell thanked Member Miller for her leadership in the micromobility and

ebike conversation. The subcommittee will meet and finalize recommendations. Member Holland mentioned that the People for Bikes “model e-bike law” is something that SPRAB can use. More signage and education is needed. Member Miller appreciated staff input and their thoughtful suggestions.

Chair McDowell completed his first STRIDE 5k since Covid and enjoyed sharing the event with his entire family.

Member Miller is going to be interviewed at Bailey Ridge Park for the 90 Parks in 90 Days promotion.

Member Hartwig thinks that the Salem Parks Foundation’s staff recognition in their newsletter is well done. He’d like those recognitions to reach a wider audience, however, and suggested sharing them with the Statesman Journal. Chair McDowell suggested that the City post them on the website.

Member Lloyd announced that NEN Neighborhood Association recently met in two parks and enjoyed a meal courtesy of funds received from the City for volunteer hours. People played basketball on the recently resurfaced court (a project that was paid for using SPIF grant funds). Graffiti was removed from another neighborhood park and planting of pollinator plants is anticipated to continue.

8. Information Reports

(Information reports are provided as written reports ahead of the meeting.)

a. Parks & Natural Resources Planning Update

Rob Romanek said he attended the Wildlife Advisory Committee of the Willamette Wildlife Mitigation Program, which is making a recommendation for a \$3.5 million grant proposal for the acquisition of the Riverbend Property north of Wallace Marine Park. The process is moving forward with no guarantees of an award, but it’s looking good. Chair McDowell wondered if it might be helpful to have a template letter from SPRAB ready to use for future grant opportunities. He will think about wording for a letter.

Member Alexander asked for an update on the master plan for the Stephens-Yoshikai School Park. The planning process for the park will be initiated after Fisher Road Park, hopefully within the next six months.

b. Parks Operations Update

None.

c. Recreation Services Update

The Fourth of July celebration went well with thousands in attendance. It appeared that all enjoyed the fireworks show. Salem Police did a great job supporting the event. Heat issues and lost kids were handled quickly and efficiently. City staff will debrief with fairgrounds staff soon. Hopefully the decision to make it a permanent location will be made by December.

The upcoming Salem Art Fair and Ironman events are happening on the same weekend. Travel Salem hopes to renew/sign a 5-year agreement with the Ironman event coordinators. Member Holland mentioned that white paint needs to be

reapplied on sections of the Minto-Brown Island Park main trail where tree roots have damaged the path.

Chair McDowell asked if the City and SPRAB could be involved with ornament hunts in parks and engage some local businesses if possible. Jennifer Kellar is working with Pamela Garland and Salem Seekers. In June, glass birds were hidden in Weathers Street Park. In July, they were placed around Woodmansee Park. Orchard Heights Park has been selected for August and Northgate Park in September. Parks staff is also working with her regarding the 90 Parks in 90 Days promotion. Becky is happy to talk with Chair McDowell about the winter ornament opportunity.

Vice-Chair Norris commended Becky on the successful relocation of the Fourth of July celebration. Big team effort!

d. Urban Forestry Update
None.

e. Parks Damage Report
None.

9. New Business

Chair McDowell informed the group that the August meeting will be cancelled due to quorum issues.

10. Next Meeting

The next scheduled meeting will be September 14, 2023. If there are any neighborhood association meetings scheduled for the same time, members are encouraged to attend the association meeting. Member Holland asked about neighborhood association websites and the benefit of consistency across the board. Rob said that several associations have their own websites and every association has a page on the City website that the City assists in maintaining. Member Miller noted that she started a newsletter for SWAN after the City offered funding assistance for neighborhood associations to communicate with residents. It's distributed via Mailchimp. Member Alexander said that neighborhood associations used to mail newsletters to neighbors once a year. The City is looking for innovative ways for neighborhood associations to communicate with neighbors. Each association takes a different approach and involvement level.

11. Adjourned at 6:31 p.m.

SPRAB Information Reports Packet

September 14, 2023

- 1) News from Mission Street Park Conservancy**
- 2) Parks Planning Update**
- 3) Parks Operations Update**
- 4) Recreation Services Update**
- 5) Urban Forestry Update**
- 6) Parks Damage Report**

Salem Parks and Recreation Advisory Board
News from Mission Street Park Conservancy – September 2023

In early August, Maureen McGee reached out to City staff about recent leadership changes at the Mission Street Parks Conservancy and asked that we relay the following to SPRAB.

Effective as of July, Maureen has taken over for Christine Chute as the Board Chair. They have also added some new members to their board. Current leadership is as follows:

- Maureen McGee, Chair
- Kathy Savicki, Secretary
- Gretchen Carnaby, Treasurer
- Patti Sieg
- Michael Weber
- Emily Standish
- Julia Battle

Maureen is very excited to continue working with SPRAB on behalf of the MSPC and to increase collaboration as she moves into this new role.

She will continue to provide MSPC's quarterly reports. The next report is scheduled for SPRAB's October meeting.

Salem Parks and Recreation Advisory Board
Parks Planning and Natural Resources Update – September 2023

Implementation of Our Salem. The City adopted Our Salem – an update to the City’s Comprehensive Plan – in 2022. Now, the City’s focus has turned to more detailed planning, including planning for the future of Salem’s parks and recreation services. Equity is central to all of this work. To outline the various implementation efforts and highlight the importance of equity, the City has published a [new webpage](#) and a four-page brochure (English version attached). An overview of the Comprehensive Parks System Master Plan update will be provided at SPRAB’s next meeting.

Fairview Park Master Plan Revisit and Refinement. Fairview Park is an undeveloped community park property located at 2220 Strong Road SE. A master plan revisit and refinement effort has officially kicked-off with support from landscape architecture firm, Cameron McCarty. Their services include planning, design, and community engagement. The consultant team is currently gathering and reviewing relevant background information in preparation for an in-depth site analysis. Community outreach and engagement will kick-off later this fall.

Fisher Road Park Master Plan. The City is initiating a master planning effort for Fisher Road Park, an approximately 6.8-acre undeveloped neighborhood park, located at 4350 Fisher Road NE. Greenworks, another landscape architecture firm, has been issued a project assignment for planning, design, and community engagement support services. An official project kick-off meeting will be held later in September.

The scope of work includes an enhanced community engagement effort and Greenworks has added IZO Public Relations & Marketing to their team for added support. IZO is based out of Woodburn and specializes in marketing to Latino communities in Oregon. With IZO’s assistance, we hope to tap into community-based partners to achieve more broad-based engagement with the surrounding neighbors. Fisher Road Park is a Neighborhood Parks so our target population is residents within a half-mile walking distance. Based on US Census Bureau demographic information, these neighboring residents predominantly identify as Hispanic and/or Latinos.

Potential community-based partner roles include the following:

- Co-hosting public input sessions in locations more familiar to target community members
- Helping the core project team understand the community’s current level of understanding about various park-related topics so our materials can provide helpful background context
- Recruit attendees for input sessions and provide support to facilitate these sessions
- Help with reporting back to the neighboring residents about how their input was used to develop the final master plan and ways that they can stay involved and informed as the plan is implemented

In acknowledgment of the effort we are asking community partners to contribute, the project is slated to provide participation stipends.

Geer Park Skate Park Grant. In April, staff submitted a \$500,000 funding request to the Oregon Parks and Recreation Department (OPRD) Local Government Grant Program. In late August, OPRD announced preliminary results from the grant award selection process. The City’s request is recommended – meaning the City will likely receive its full funding request. The ranking results will be forwarded to the OPRD Commission for review and presumed approval at their September 20 meeting. An official announcement of the presumed funding award is expected to follow.

Geer Park Skate Park Project Delivery. To augment the City’s project management staff, a consultant has been brought on to oversee the delivery of the project. The consulting PM is currently researching the possibility of delivering the project through an alternative form of construction contracting known as Progressive Design Build (PDB). PDB allows the owner (i.e., the City) and design-builder (i.e., a specialist in building skate parks) to develop the detail project design together in a step-by-step process. If this approach is authorized by City Council, a design-builder would be selected based on qualifications, not bid price, to ensure the highest possible value is delivered.

Bailey Ridge Park Phase 1 Development. [No Update] Bailey Ridge Park is a 5.5-acre Neighborhood Park, located at 3801 Tayside Street S. in the Illahe Hills area. A master plan was completed in 2022. As a first step toward implementing the plan, Park Planning staff are scoping a Phase 1 project. This initial park development phase may include the development of park pathways and other work to address soil erosion and restore habitat along Chamber's Swale. A project design consultant will be selected in the coming months.

Salem Parks and Recreation Advisory Board
Parks Planning and Natural Resources Update – September 2023

Minto-Brown Island Park Parking Lots 2 and 3. The design of improvements to two parking lots in Minto-Brown Island Park is progressing. Bidding is expected to occur this winter with construction occurring in the spring and early summer, subject to weather and site conditions. Preliminary tree conservation and site plans submitted for land use approval are attached.

West Salem Park Replacement Restrooms. Representatives from West Salem Neighborhood Association, Edgewater Partnership, and Salem Leadership Foundation have approached the City with a proposal to replace the restroom in West Salem Park. While the City has no funding available for this project, staff and the partners have discussed a proposal in which the partners would fundraise for roughly 50% of the capital cost. Once substantial progress is made on the fundraising effort, the City would seek grant funds for the remainder. As a first step, City staff are preparing a current construction cost estimate.

Riverbend (Walling) Property Opportunity. We were not successful with the Riverbend Property Acquisition grant request through the Oregon Department of Fish and Wildlife (ODFW) Willamette Wildlife Mitigation Program. The Director of ODFW decided not to advance a funding recommendation at this time due to a variety of factors. However, the City has been invited to resubmit next year with additional information. In the meantime, the City is proceeding with an appraisal of the property so that we have a better understanding of its value.

Updates to City Tree Code. City staff are still working on updates to Salem Revised Code Chapter 86 and associated administrative rules. Jennifer Mongolo, Senior Natural Resources Planner is now the lead for Public Works. More so, a new dimension has been added to this work with the reorganization of Development Services into the Community and Urban Development Department. Robert Chandler and/or Jennifer can give a brief presentation on the status of this effort at the October SPRAB meeting.

Follow-up Ludwigia Treatment in Willamette Slough. A follow-up treatment of Ludwigia in the Willamette Slough was conducted in early September. Willamette Riverkeeper representatives conducted onsite outreach at Riverfront Park on September 5, while the work was visible from the park. This is the last year of a four-year partnership with Willamette Riverkeeper to reduce the invasive plant in the slough.

Further Collaboration with Willamette Riverkeeper. Public Works Natural Resources Planning staff are collaborating with Willamette Riverkeeper on a new grant proposal to treat invasive aquatic plants in Oxbow Slough, which is located within Minto-Brown Island Park. Staff will be requesting Council authorization to apply for the grant at the September 25 Council meeting. If awarded, the project would start next summer.

Friends of Trees Contract Work for FY 2024. Four neighborhood tree planting events are planned for the upcoming planting season. Three of these events will benefit city parks, including two low-canopy parks in west Salem (Eola Ridge and Eagle's View parks) and Lansing Park in northeast Salem. The fourth event will be a continuation of the yard and street tree pilot program, returning once again to NOLA and ELNA. Within the last year NOLA absorbed the former Lansing Neighborhood Association; as such, the pilot program will reach an expanded audience.

The first Friends of Trees event for the upcoming planting season will be a pollinator planting event in Bush's Pasture Park, to be located near the Rhododendron Garden. The event will be held on October 7. The full Friends of Trees event calendar for Salem is almost ready to be shared. It should be available soon at friendsoftrees.org/salem.

Timber Tectonics in the Digital Age. A collaborative college course held this fall between Oregon State University's Wood Science and Engineering and University of Oregon's Architecture department is slated to focus on needs within the Salem Park System for demountable pavilions or other similar structures. The course may result in ideas to be carried forward by the City or by one or more advanced students via independent study. Project ideas for the students to consider are attached. Visit timbertectonics.com to learn more about the course.

We're Hiring. With a recent promotion of Matthew Johnston to Parks Field Supervisor, the City is backfilling his former Natural Infrastructure Specialist position. A job posting will be open for three weeks, closing on Monday, October 2. The posting can be viewed online at www.governmentjobs.com/careers/cityofsalem.



YOUR GUIDE TO PLANNING FOR OUR FUTURE

We adopted Our Salem – an update to the City’s Comprehensive Plan – in 2022. Now, our planning work continues.

Our Salem set the policy framework for future growth and development by updating the Salem Area Comprehensive Plan, Comprehensive Plan Map, zoning map, and zoning code.

Now, we're focusing on detailed planning for:

- Healthy streams
- Improved climate resilience and reduced emissions
- Green space for everyone
- Walking, biking, roadways, street designs, and future investments
- More housing choices and walkable centers
- Traffic calming

Equity is central to all we do. Why is equity important?

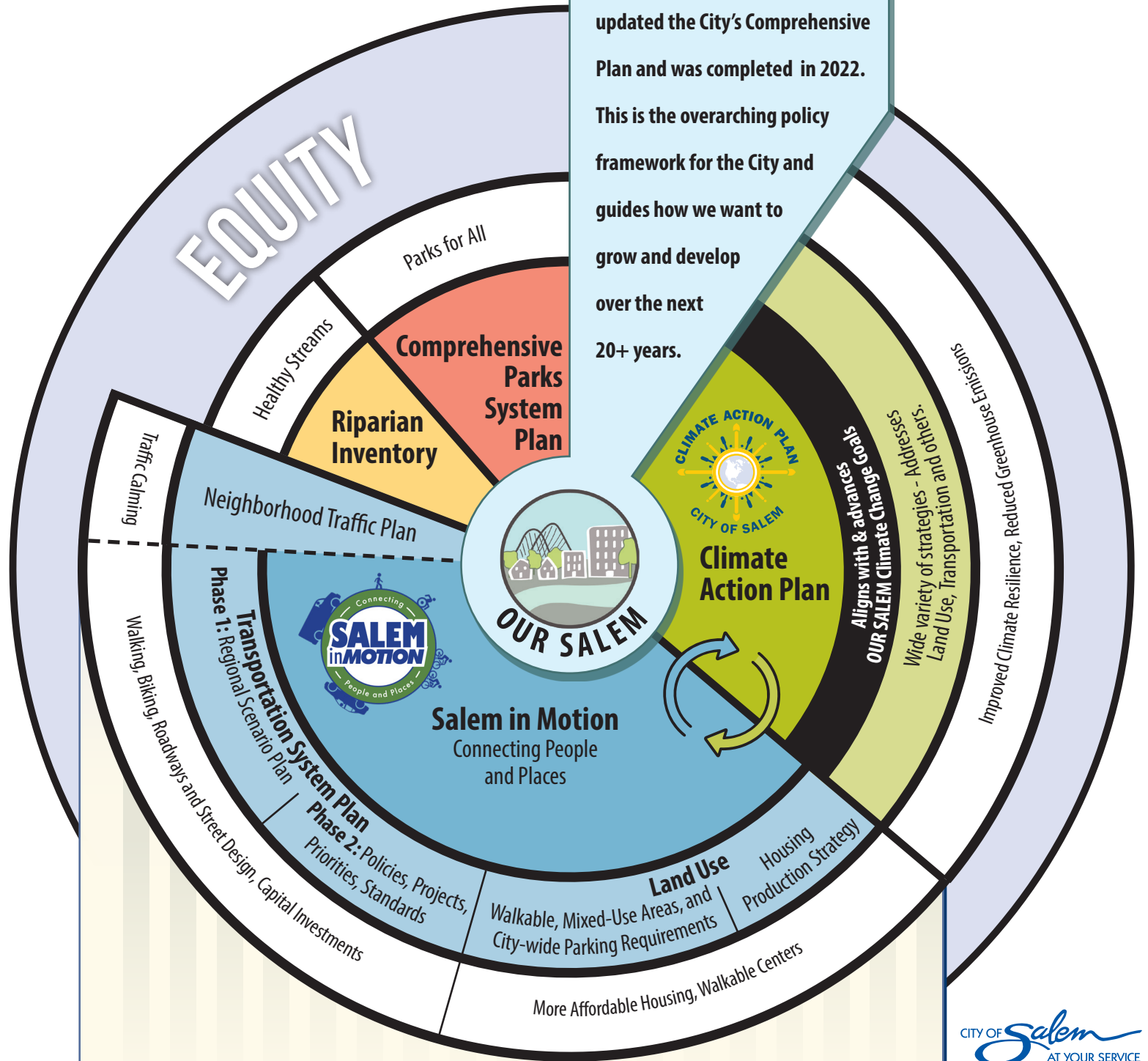
- Equity means all residents have the opportunity to participate and thrive in an inclusive society. This requires rectifying unequal access to resources and opportunities caused by historic and current systems of oppression and exclusion related to race, income, ability, gender, sexual identity, and other factors.
- An equitable community overcomes disparities by providing increased levels of support to community members based on their needs. In Salem, it is a priority to advance equity in decision-making processes and the outcomes of those processes, including policies, investments, practices, and procedures.

CONNECTIONS

OUR SALEM

is the planning process that updated the City's Comprehensive Plan and was completed in 2022.

This is the overarching policy framework for the City and guides how we want to grow and develop over the next 20+ years.



STATE OF OREGON: Climate Friendly and Equitable Community Rules

- » New and amended STATE RULES focused on Land Use, Transportation, and Equity.
- » Direct REQUIREMENTS to cities including Transportation, Land Use, Housing, and Equity.

PROJECT DESCRIPTIONS

Climate Action Plan

2022 Accepted / Ongoing Implementation

Aligns with and advances the Our Salem project



- Outlines strategies and actions to reduce greenhouse gas emissions and increase climate resiliency in Salem.
- Includes 183 strategies related to transportation and land use, energy, economic development, natural resources, materials and waste, local food systems, and strengthening our community.

Comprehensive Parks System Master Plan

2023-2026

Builds on the Our Salem project

- Outlines goals, policies, and implementation steps to guide park acquisition and development over the next 20 years.

Neighborhood Traffic Management Plan

2023

Implements the TSP

- Outlines how traffic speeds and volume concerns in residential areas are examined, prioritized, and addressed on an ongoing basis.

Riparian Inventory

Dates to be determined

Builds on the Our Salem project

- Inventories of rivers, creeks, and waterbodies and the land along these features known as riparian corridors.
- Leads to updated regulations that increase protections of waterways and riparian corridors.
- Complies with Oregon's Statewide Land Use Planning Goal 5.

INFLUENCES

Climate-Friendly and Equitable Communities (CFEC)

Adopted in 2022 by the Oregon Land Conservation and Development Commission

- State rules that require cities in metropolitan areas to make changes to transportation and land use plans and parking regulations.
- Aims to reduce greenhouse gas emissions from transportation and promote equity.



INFLUENCES

Salem in Motion

2023-2026

Builds on the Our Salem project and Climate Action Plan

- Updates the Salem Transportation System Plan and implements the State's Climate-Friendly and Equitable Communities rules.
- ▶ **Transportation System Plan (TSP) 2023-2026**
Part of the Salem in Motion project
 - Outlines policies, programs, and projects to meet transportation challenges and priorities over the next 20 years.
- ▶ **TSP Phase 1: Regional Scenario Plan 2023-2024**
Required by the CFEC Rules
 - Establishes high-level strategies to meet the State's climate pollution reduction targets.
 - Focuses on changes and investments in active transportation, transit, parking management, streets, and other related improvements.
 - Requires regional partnership (with Keizer and Marion County).
- ▶ **TSP Phase 2: Policies, Projects, Priorities, Standards**
Prioritizes projects to align with Regional Scenario Plan
 - Updates the Salem Transportation System Plan.
 - Implements local priorities through new transportation project lists, standards, and policies.

▶ Land Use: Parking Reform

2023

Required by CFEC Rules

- Changes to citywide parking regulations required by the State.
- Eliminates minimum off-street parking requirements citywide.
- Revises parking lot regulations.

▶ Land Use: Walkable, Mixed-Use Areas

2023-2026

Builds on the Our Salem project and required by CFEC Rules

- Promotes compact, walkable, mixed-use development and supports access by people who walk, bike, or take transit.
- Builds on the Our Salem project that rezoned areas to different mixed-use zones.

▶ Housing Production Strategy

2024-2025

Implements the Our Salem project and is required by the State

- Describes strategies to encourage the production of housing to meet Salem's housing needs.
- Focuses on regulatory, financial, and land-based strategies.



PLANNING FOR OUR FUTURE

RESOURCES AND CONTACT INFORMATION



Resources

SALEM IN MOTION

www.cityofsalem.net/salem-in-motion

OUR SALEM

www.cityofsalem.net/our-salem

CLIMATE ACTION PLAN

www.cityofsalem.net/climate-action

PARK PLANNING AND DEVELOPMENT

www.cityofsalem.net/park-planning

CLIMATE-FRIENDLY AND EQUITABLE COMMUNITIES

www.oregon.gov/lcd/CL/Pages/CFEC.aspx

www.oregon.gov/odot/Planning/Pages/Climate-Transportation-Planning.aspx

NEIGHBORHOOD TRAFFIC MANAGEMENT PLAN

www.cityofsalem.net/community/transportation-getting-around/traffic-road-conditions/neighborhood-traffic-management-plan

Contact Information

GENERAL INFORMATION

Lisa Anderson-Ogilvie

Planning Administrator

503-540-2381

lmanderson@cityofsalem.net

SALEM IN MOTION - TRANSPORTATION

Julie Warncke

Transportation Planning Manager

503-588-6211

jwarncke@cityofsalem.net

SALEM IN MOTION - LAND USE

Eunice Kim

Long Range Planning Manager

503-588-6173

ekim@cityofsalem.net

CLIMATE ACTION PLAN

Heather Dimke

Management Analyst

503-588-6211

hdimke@cityofsalem.net

COMPREHENSIVE PARKS SYSTEM MASTER PLAN

Rob Romanek

Parks Planning Manager

503-588-6211

rromanek@cityofsalem.net

RIPARIAN INVENTORY

Jeffery Johnson

Natural Resources Planner

503-588-6211

jdjohnson@cityofsalem.net

SHEET PREPARED BY:

AKS ENGINEERING & FORESTRY, LLC
3700 RIVER RD N, STE 1
KEIZER, OR 97303
503.400.6028
WWW.AKS-ENG.COM



ENGINEERING • SURVEYING • NATURAL RESOURCES
FORESTRY • PLANNING • LANDSCAPE ARCHITECTURE

AKS PROJECT #: 5218-16



CERTIFICATE EXPIRES: JUNE 30, 2024
DATE SIGNED:

**MINTO BROWN
PARKING LOTS**

REVISIONS			
NO.	DESCRIPTION	DATE	BY

PN 722411

HORIZ DATUM:
VERT DATUM:
HORIZ SCALE: AS NOTED
VERT SCALE: AS NOTED
DESIGN: MTA
DRAWN: ADM
CHECKED: RCW

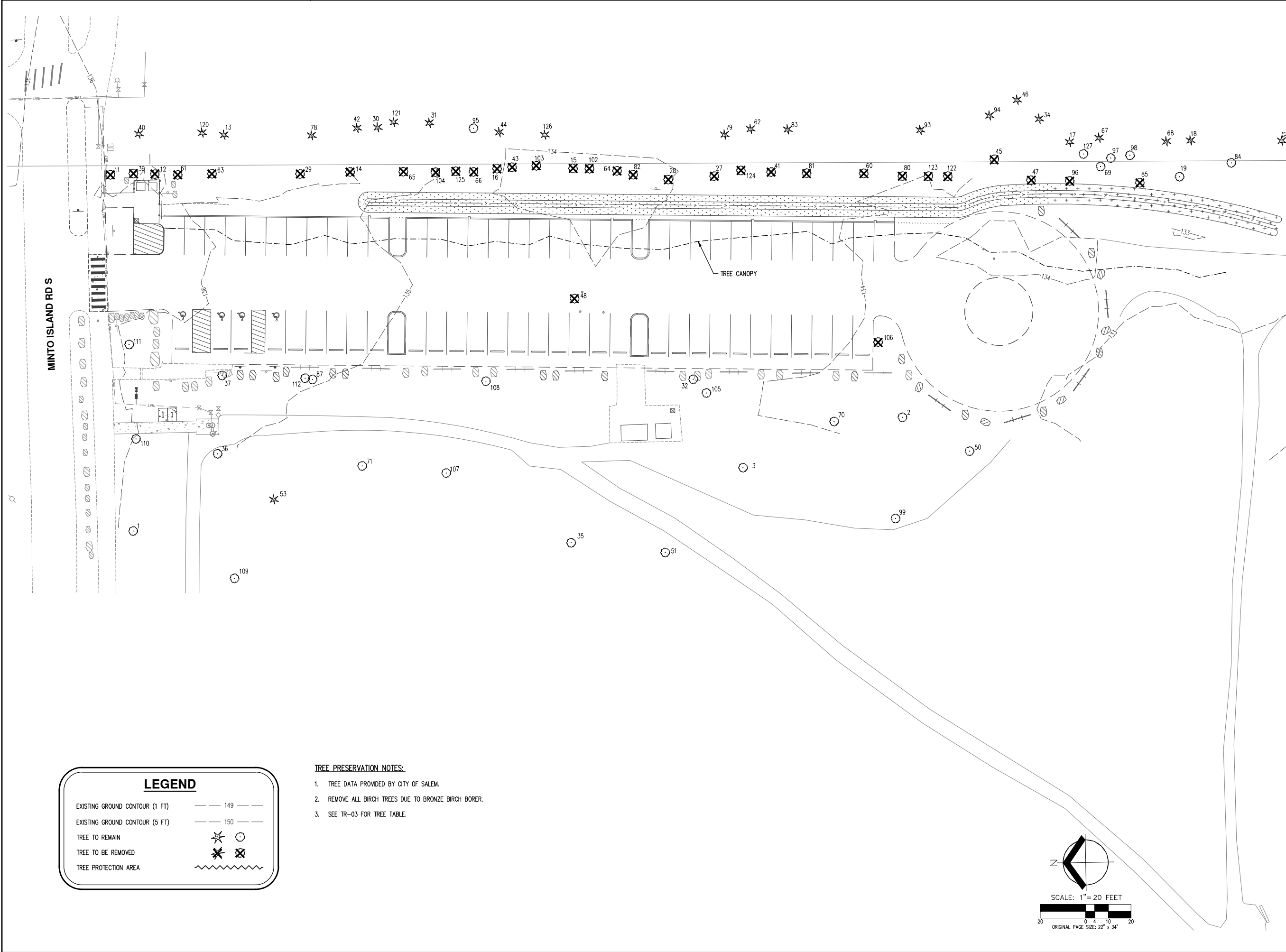
APPROVED:

SHEET TITLE

**TREE
PRESERVATION
PLAN - PARKING
LOT 2**

TR-01

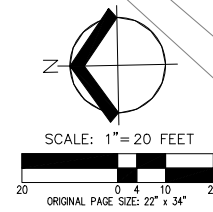
SHEET 5 OF 13



- TREE PRESERVATION NOTES:**
- TREE DATA PROVIDED BY CITY OF SALEM.
 - REMOVE ALL BIRCH TREES DUE TO BRONZE BIRCH BORER.
 - SEE TR-03 FOR TREE TABLE.

LEGEND

EXISTING GROUND CONTOUR (1 FT) --- 149 ---
 EXISTING GROUND CONTOUR (5 FT) --- 150 ---
 TREE TO REMAIN * (in circle)
 TREE TO BE REMOVED * (in square)
 TREE PROTECTION AREA ~~~~~





SHEET PREPARED BY:

AKS ENGINEERING & FORESTRY, LLC
3700 RIVER RD N, STE 1
KEIZER, OR 97303
503.400.6028
WWW.AKS-ENG.COM



ENGINEERING • SURVEYING • NATURAL RESOURCES
FORESTRY • PLANNING • LANDSCAPE ARCHITECTURE

AKS PROJECT #: 5218-16



CERTIFICATE EXPIRES: JUNE 30, 2024
DATE SIGNED:

**MINTO BROWN
PARKING LOTS**

REVISIONS			
NO.	DESCRIPTION	DATE	BY

PN 722411

HORIZ DATUM:
VERT DATUM:
HORIZ SCALE: AS NOTED
VERT SCALE: AS NOTED
DESIGN: MTA
DRAWN: ADM
CHECKED: RCW

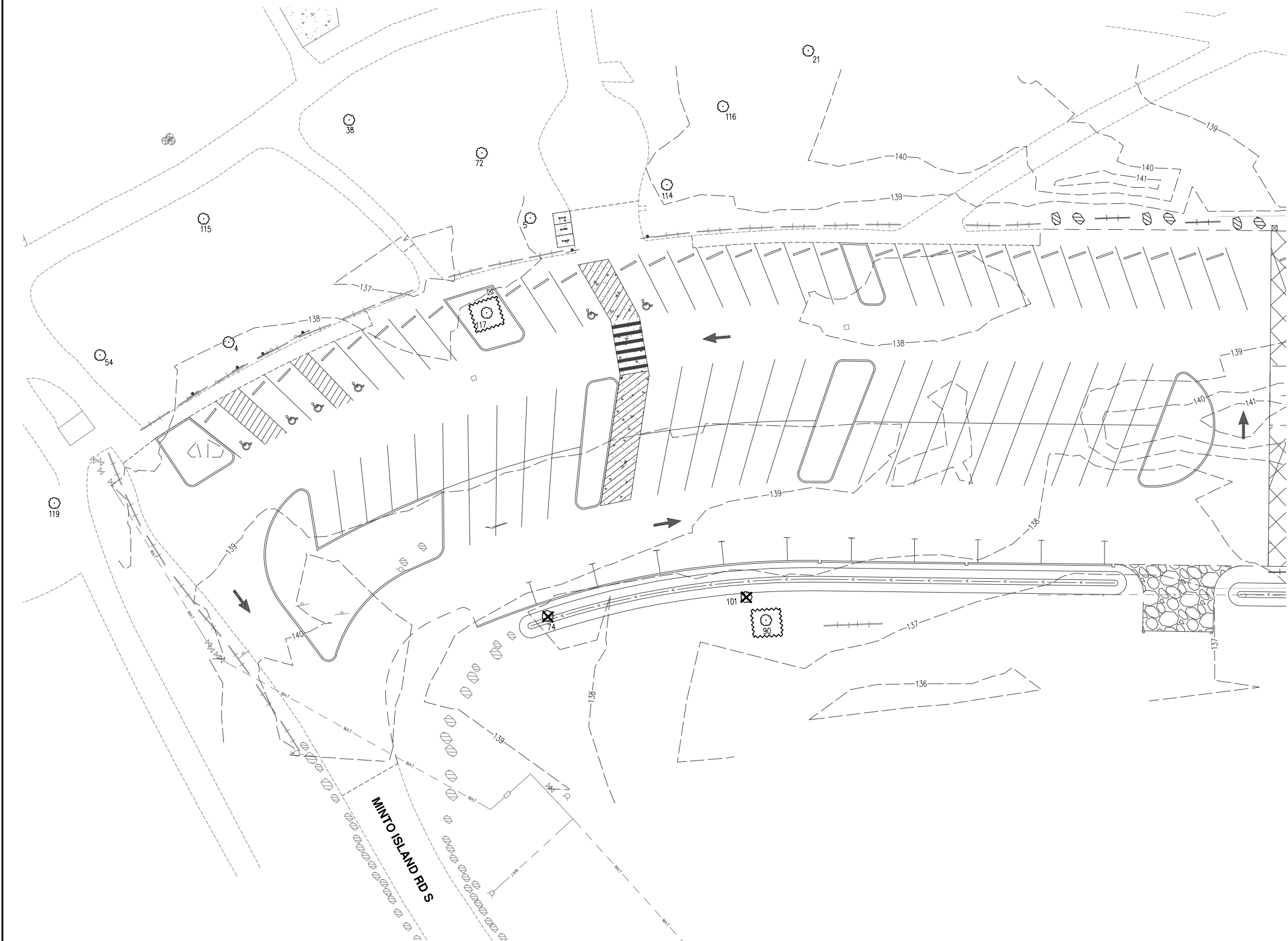
APPROVED:

SHEET TITLE

**TREE
PRESERVATION
PLAN - PARKING
LOT 3**

TR-02

SHEET 6 OF 13



TREE PRESERVATION NOTES:

1. TREE DATA PROVIDED BY CITY OF SALEM.
2. REMOVE ALL BIRCH TREES DUE TO BRONZE BIRCH BORER.
3. SEE TR-03 FOR TREE TABLE.

LEGEND

- EXISTING GROUND CONTOUR (1 FT) --- 149 ---
- EXISTING GROUND CONTOUR (5 FT) --- 150 ---
- TREE TO REMAIN * ○
- TREE TO BE REMOVED * ⊗
- TREE PROTECTION AREA ~~~~~



SCALE: 1" = 20 FEET
ORIGINAL PAGE SIZE: 22" x 34"

SHEET PREPARED BY:

AKS ENGINEERING & FORESTRY, LLC
3700 RIVER RD N, STE 1
KEIZER, OR 97303
503.400.6028
WWW.AKS-ENG.COM



ENGINEERING • SURVEYING • NATURAL RESOURCES
FORESTRY • PLANNING • LANDSCAPE ARCHITECTURE

AKS PROJECT #: 5218-16



CERTIFICATE EXPIRES: JUNE 30, 2024
DATE SIGNED:

MINTO BROWN PARKING LOTS

REVISIONS			
NO.	DESCRIPTION	DATE	BY

PN 722411

HORIZ DATUM:
VERT DATUM:
HORIZ SCALE: AS NOTED
VERT SCALE: AS NOTED
DESIGN: MTA
DRAWN: ADM
CHECKED: RCW

APPROVED:

SHEET TITLE

TREE PRESERVATION PLAN - PARKING LOT 3

TR-03

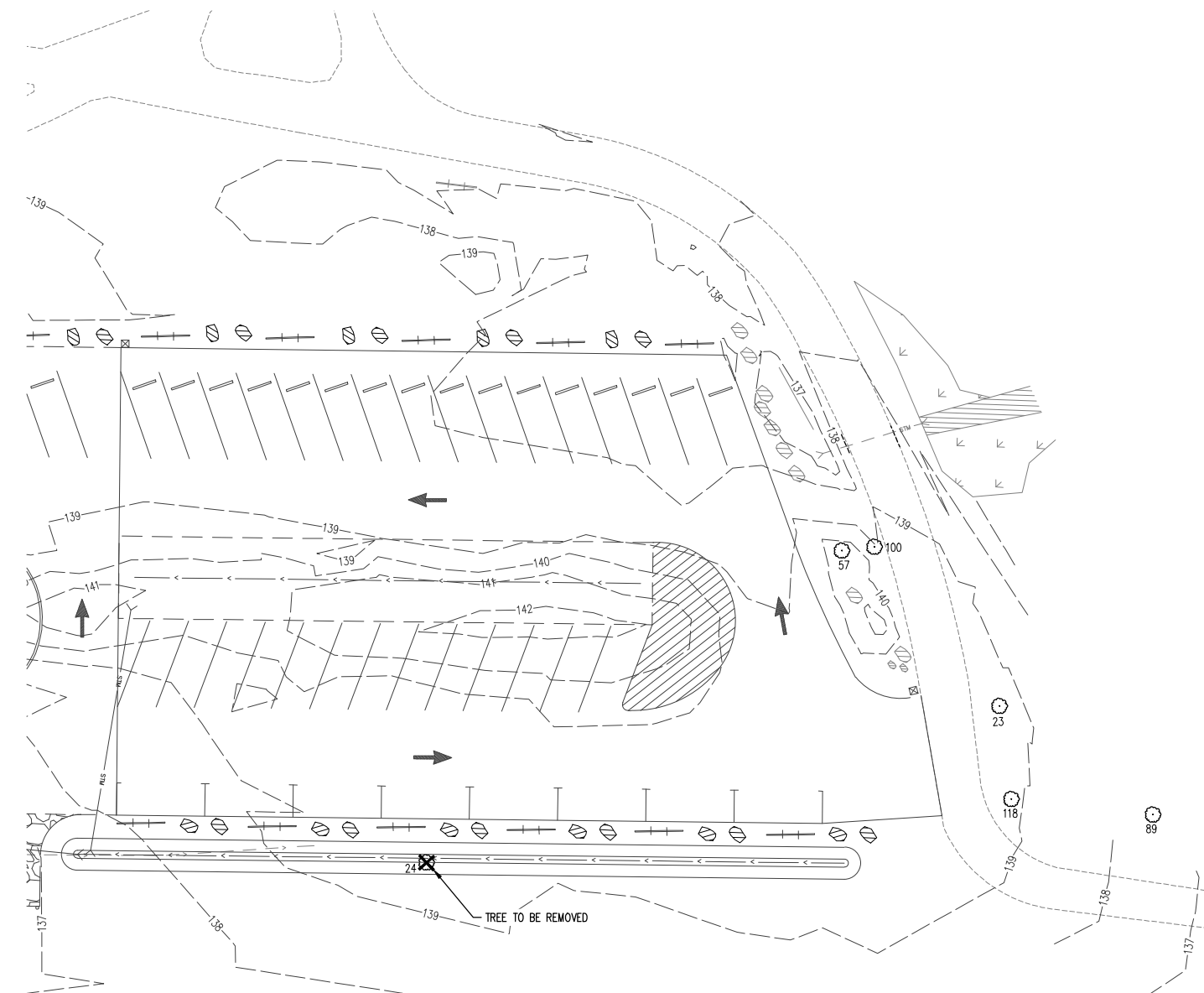
SHEET 7 OF 13

TREE TABLE		
TREE NUMBER	TYPE	DBH (IN.)
1	DECIDUOUS	1.0
2	DECIDUOUS	10.7
3	DECIDUOUS	1.0
4	DECIDUOUS	20.8
5	DECIDUOUS	4.7
6	DECIDUOUS	44.3
7	DECIDUOUS	11.7
8	DECIDUOUS	29.5
9	DECIDUOUS	31.5
10	DECIDUOUS	7.1
11	DECIDUOUS	12.0
12	DECIDUOUS	12.0
13	CONIFEROUS	20.4
14	DECIDUOUS	14.8
15	DECIDUOUS	15.0
16	DECIDUOUS	19.4
17	CONIFEROUS	25.5
18	CONIFEROUS	30.0
19	DECIDUOUS	15.6
20	DECIDUOUS	38.4
21	DECIDUOUS	5.5
22	CONIFEROUS	11.7
23	DECIDUOUS	24.7
24	DECIDUOUS	22
25	DECIDUOUS	16.2
26	DECIDUOUS	8.1
27	DECIDUOUS	20.8
28	DECIDUOUS	11.8
29	DECIDUOUS	17
30	CONIFEROUS	9.0
31	CONIFEROUS	20.4
32	DECIDUOUS	2.8

TREE TABLE		
TREE NUMBER	TYPE	DBH (IN.)
33	CONIFEROUS	30.9
34	CONIFEROUS	11.0
35	DECIDUOUS	21.0
36	DECIDUOUS	1.0
37	DECIDUOUS	1.0
38	DECIDUOUS	75.0
39	DECIDUOUS	20.0
40	CONIFEROUS	14.0
41	DECIDUOUS	11.0
42	CONIFEROUS	21.3
43	DECIDUOUS	19.0
44	CONIFEROUS	13.6
45	DECIDUOUS	11.8
46	CONIFEROUS	12.0
47	DECIDUOUS	21.7
48	DECIDUOUS	16.9
49	DECIDUOUS	18.0
50	DECIDUOUS	13.0
51	DECIDUOUS	21.6
52	DECIDUOUS	19.9
53	CONIFEROUS	22.8
54	DECIDUOUS	60.5
55	DECIDUOUS	11.3
56	DECIDUOUS	11.3
57	DECIDUOUS	11.9
58	DECIDUOUS	29.4
59	DECIDUOUS	47.6
60	DECIDUOUS	14.4
61	DECIDUOUS	14.1
62	CONIFEROUS	12.8
63	DECIDUOUS	18.2
64	DECIDUOUS	17.5

TREE TABLE		
TREE NUMBER	TYPE	DBH (IN.)
65	DECIDUOUS	14.8
66	DECIDUOUS	11.3
67	CONIFEROUS	27.6
68	CONIFEROUS	28.7
69	DECIDUOUS	9.8
70	DECIDUOUS	28.0
71	DECIDUOUS	19.8
72	DECIDUOUS	3.5
73	DECIDUOUS	11.2
74	DECIDUOUS	27.1
75	DECIDUOUS	73.0
76	DECIDUOUS	38.7
77	DECIDUOUS	6.8
78	CONIFEROUS	30.4
79	CONIFEROUS	35.0
80	DECIDUOUS	15.8
81	DECIDUOUS	22.8
82	DECIDUOUS	15.9
83	CONIFEROUS	30.0
84	DECIDUOUS	9.7
85	DECIDUOUS	9.0
86	DECIDUOUS	34.8
87	DECIDUOUS	1.5
88	CONIFEROUS	31.0
89	DECIDUOUS	43.5
90	DECIDUOUS	12.0
91	DECIDUOUS	14.0
92	DECIDUOUS	22.5
93	CONIFEROUS	39.1
94	CONIFEROUS	13.0
95	DECIDUOUS	10.3
96	DECIDUOUS	10.2

TREE TABLE		
TREE NUMBER	TYPE	DBH (IN.)
97	DECIDUOUS	23.2
98	DECIDUOUS	15.7
99	DECIDUOUS	18.0
100	DECIDUOUS	19.2
101	DECIDUOUS	14.0
102	DECIDUOUS	19.5
103	DECIDUOUS	15.2
104	DECIDUOUS	9.3
105	DECIDUOUS	2.0
106	DECIDUOUS	13.1
107	DECIDUOUS	1.0
108	DECIDUOUS	1.6
109	DECIDUOUS	20.6
110	DECIDUOUS	1.0
111	DECIDUOUS	1.0
112	DECIDUOUS	19.6
113	DECIDUOUS	22.2
114	DECIDUOUS	1.5
115	DECIDUOUS	24.3
116	DECIDUOUS	3.0
117	DECIDUOUS	8.2
118	DECIDUOUS	28.1
119	DECIDUOUS	6.2
120	CONIFEROUS	34.3
121	CONIFEROUS	34.5
122	DECIDUOUS	12.9
123	DECIDUOUS	15.5
124	DECIDUOUS	11.8
125	DECIDUOUS	11.8
126	CONIFEROUS	19.0
127	DECIDUOUS	12.2



- TREE PRESERVATION NOTES:**
- TREE DATA PROVIDED BY CITY OF SALEM.
 - REMOVE ALL BIRCH TREES DUE TO BRONZE BIRCH BORER.
 - SEE TR-03 FOR TREE TABLE.

LEGEND

- EXISTING GROUND CONTOUR (1 FT) --- 149 ---
- EXISTING GROUND CONTOUR (5 FT) --- 150 ---
- TREE TO REMAIN
- TREE TO BE REMOVED
- TREE PROTECTION AREA

SCALE: 1"=20 FEET

ORIGINAL PAGE SIZE: 22" x 34"

SHEET PREPARED BY:

AKS ENGINEERING & FORESTRY, LLC
3700 RIVER RD N, STE 1
KEIZER, OR 97303
503.400.6028
WWW.AKS-ENG.COM



ENGINEERING • SURVEYING • NATURAL RESOURCES
FORESTRY • PLANNING • LANDSCAPE ARCHITECTURE

AKS PROJECT #: 5218-16



CERTIFICATE EXPIRES: JUNE 30, 2024
DATE SIGNED:

**MINTO BROWN
PARKING LOTS**

REVISIONS			
NO.	DESCRIPTION	DATE	BY

PN 722411

HORIZ DATUM:
VERT DATUM:
HORIZ SCALE: AS NOTED
VERT SCALE: AS NOTED
DESIGN: MTA
DRAWN: ADM
CHECKED: RCW

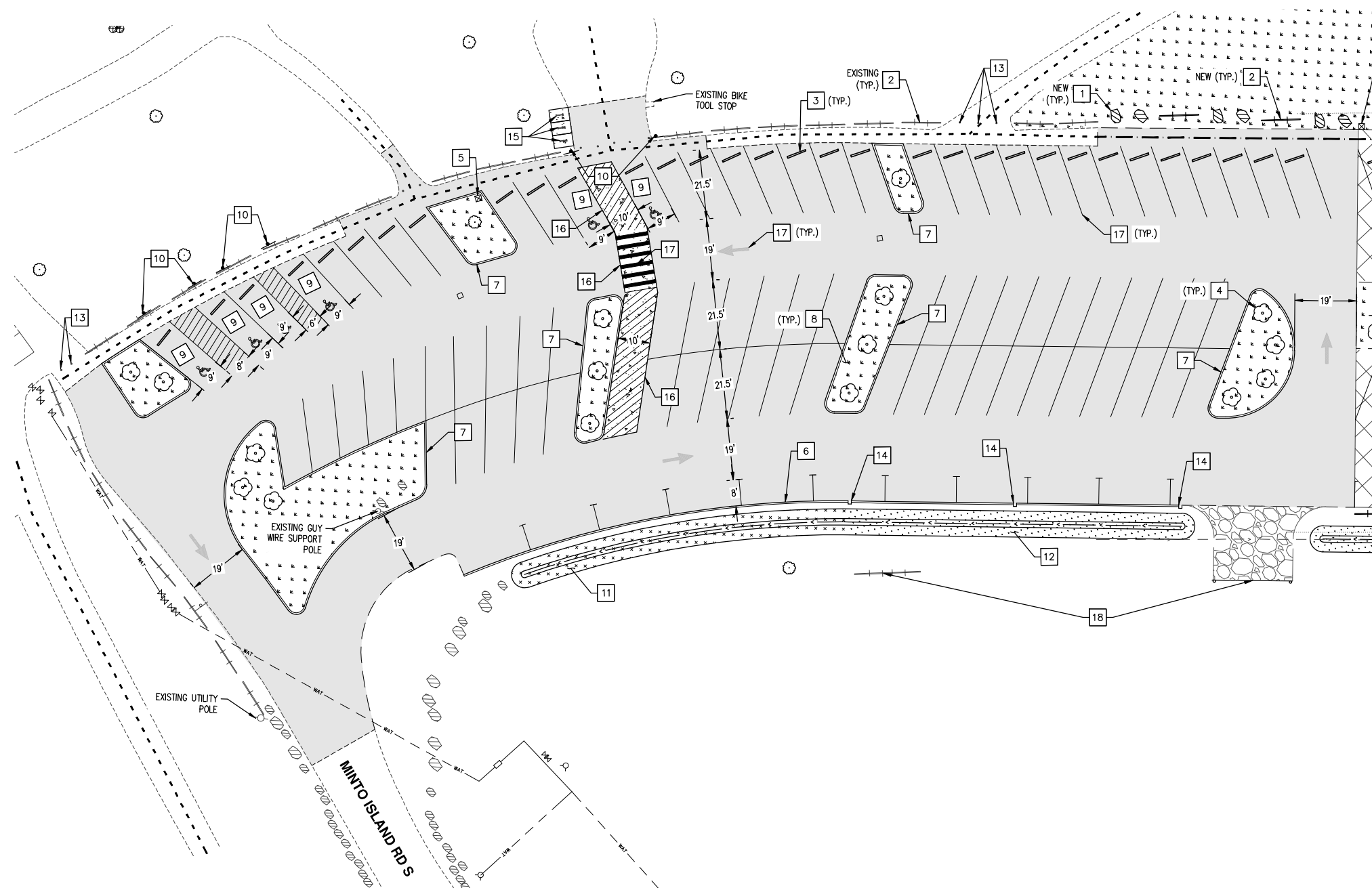
APPROVED:

SHEET TITLE

**PRELIMINARY
SITE AND UTILITY
PLAN - PARKING
LOT 3**

ST-02

SHEET 9 OF 13



SITE SUMMARY:

TOTAL SITE AREA (DEVELOPED AREA) = 75,800 SQ. FT.
TOTAL IMPERVIOUS AREA = 55,000 SQ. FT.
TOTAL LANDSCAPE AREA = 20,800 SQ. FT.

AREA OF PARKING LOT LANDSCAPING = 6,950 SQ. FT. (12.6% OF IMPERVIOUS AREA)

PARKING SUMMARY:

EXISTING STRIPED PARKING STALLS = 34
EXISTING ADA ACCESSIBLE STALLS = 4

TOTAL PROPOSED PARKING STALLS = 128
TOTAL PROPOSED ADA ACCESSIBLE STALLS = 6

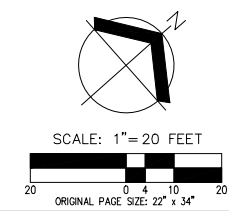
REQUIRED BICYCLE STALLS = 5 (1/30 VEHICLE SPACES)
TOTAL PROPOSED BICYCLE STALLS = 6

SITE NOTES:

1. BOULDER
2. STEEL BARRICADE
3. CONCRETE WHEEL STOP
4. NEW TREE
5. TRASH RECEPTACLE
6. TYPE "C" CURB
7. LOW PROFILE MOUNTABLE CURB
8. PROPOSED LANDSCAPE PLANTER
9. ACCESSIBLE PARKING STALL
10. ACCESSIBLE PARKING SIGN
11. WATER QUALITY SWALE
12. CONVEYANCE SWALE
13. EXISTING BOLLARD
14. CURB INLET WITH RIPRAP
15. 2' x 6' STAPLE/INVERTED BICYCLE PARKING
16. CONCRETE PAD WITH IMPACT PANEL
17. PROPOSED PARKING LOT STRIPING
18. EXISTING GATE TO BE RELOCATED. ROCK MAINTENANCE ACCESS PATH TO FIELD.

LEGEND

AC PAVEMENT	
WATER QUALITY SWALE	
CONVEYANCE SWALE	
ROCK	
LANDSCAPE	
CONCRETE	
EXISTING PAVED PEDESTRIAN PATH	
PROPOSED PAVED PEDESTRIAN PATH	



SEE SHEET ###

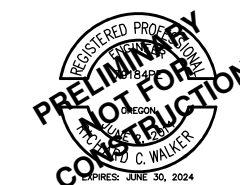
SHEET PREPARED BY:

AKS ENGINEERING & FORESTRY, LLC
3700 RIVER RD N, STE 1
KEIZER, OR 97303
503.400.6029
WWW.AKS-ENG.COM



ENGINEERING • SURVEYING • NATURAL RESOURCES
FORESTRY • PLANNING • LANDSCAPE ARCHITECTURE

AKS PROJECT #: 5218-16



CERTIFICATE EXPIRES: JUNE 30, 2024
DATE SIGNED:

**MINTO BROWN
PARKING LOTS**

REVISIONS			
NO.	DESCRIPTION	DATE	BY

PN 722411

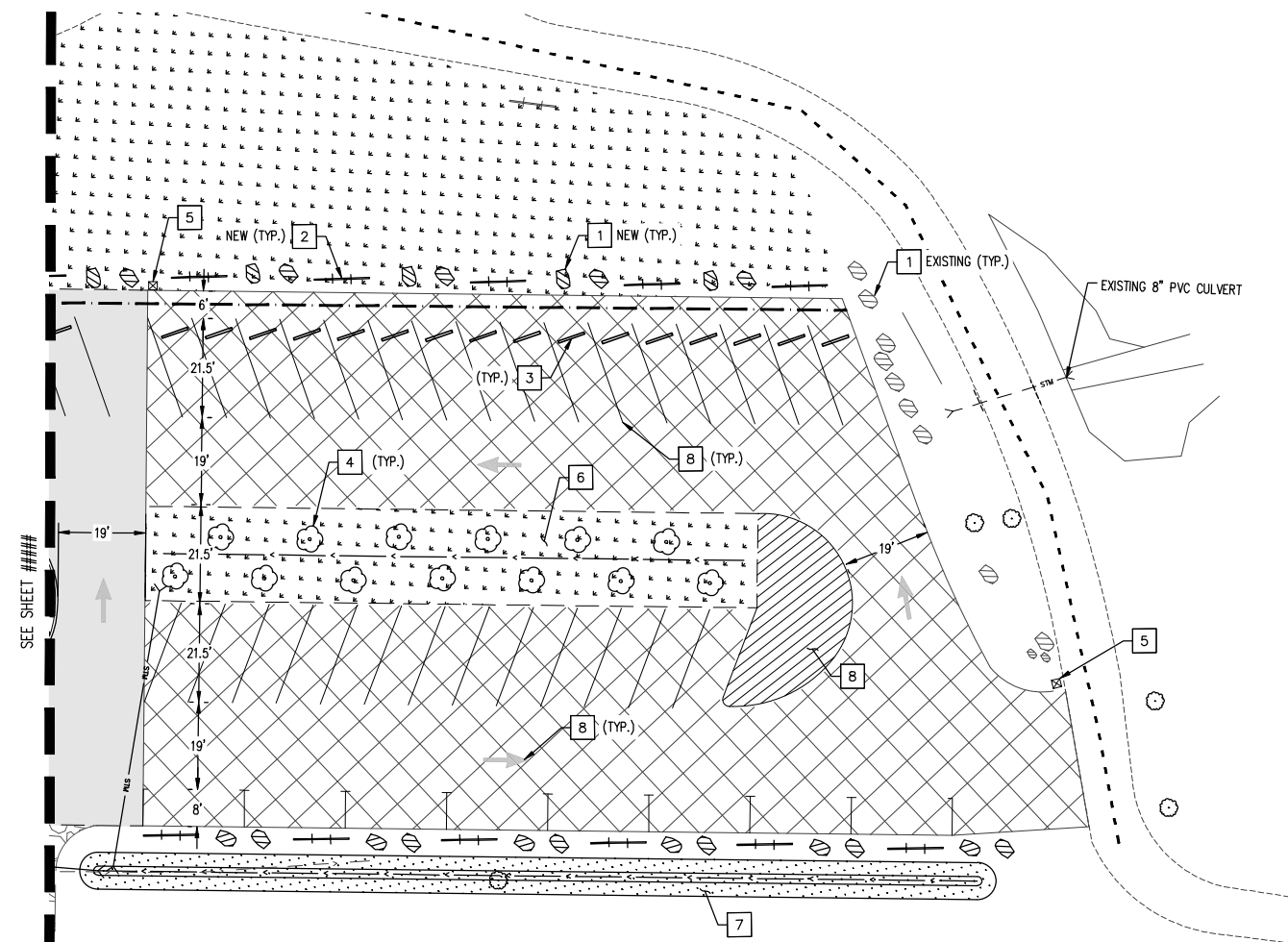
HORIZ DATUM:
VERT DATUM:
HORIZ SCALE: AS NOTED
VERT SCALE: AS NOTED
DESIGN: MTA
DRAWN: ADM
CHECKED: RCW

APPROVED:

SHEET TITLE
**PRELIMINARY
SITE AND UTILITY
PLAN - PARKING
LOT 3**

ST-03

SHEET 10 OF 13



SITE SUMMARY:
TOTAL SITE AREA (DEVELOPED AREA) = 72,800 SQ. FT.
TOTAL IMPERVIOUS AREA = 55,000 SQ. FT.
TOTAL LANDSCAPE AREA = 20,800 SQ. FT.

AREA OF PARKING LOT LANDSCAPING = 6,950 SQ. FT. (12.6% OF IMPERVIOUS AREA)

PARKING SUMMARY:
EXISTING STRIPED PARKING STALLS = 34
EXISTING ADA ACCESSIBLE STALLS = 4

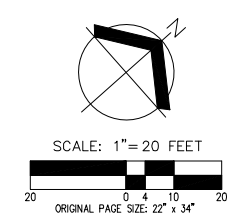
TOTAL PROPOSED PARKING STALLS = 128
TOTAL PROPOSED ADA ACCESSIBLE STALLS = 6

REQUIRED BICYCLE STALLS = 5 (1/30 VEHICLE SPACES)
TOTAL PROPOSED BICYCLE STALLS = 6

- SITE NOTES:** #
- BOULDER
 - STEEL BARRICADE
 - CONCRETE WHEEL STOP
 - NEW TREE
 - TRASH RECEPTACLE
 - PROPOSED LANDSCAPE PLANTER
 - CONVEYANCE SWALE
 - PROPOSED PARKING LOT STRIPING

LEGEND

- AC PAVEMENT [Symbol]
- OIL MAT [Symbol]
- CONVEYANCE SWALE [Symbol]
- LANDSCAPE [Symbol]
- CONCRETE [Symbol]
- EXISTING PAVED PEDESTRIAN PATH [Symbol]
- PROPOSED PAVED PEDESTRIAN PATH [Symbol]



Project Ideas

for Timber Tectonics in the Digital Age



Highland Park shelter

This neighborhood park has dinosaurs for climbing on, a slide, swings, picnic tables, an open grass field, and lit tennis courts with lines to accommodate pickleball if you bring your own net.

It is one of several parks in Salem with a small, unused stage (i.e., paved platform) originally intended for small neighborhood performances. The park also lacks a shelter or gazebo.

Shelters are popular features in our park system as they provide shade, shelter from rain and a place to rest and gather. Park users would benefit from a structure specifically design to cover the platform, adapting and repurposing the space into a park shelter big enough to accommodate up to two picnic tables.

The idea of deploying a demountable timber structure is attractive because it could be assembled with limited impacts to park users and neighbors and repositioned to another park if the need arose.

Highland Park is located at 2025 Broadway St. NE. The stage has an octagonal shaped that covers approximately 280 square feet and is 18 feet wide. It is adjacent to a park path. A bench installed on the eastern side of the platform can be relocated.

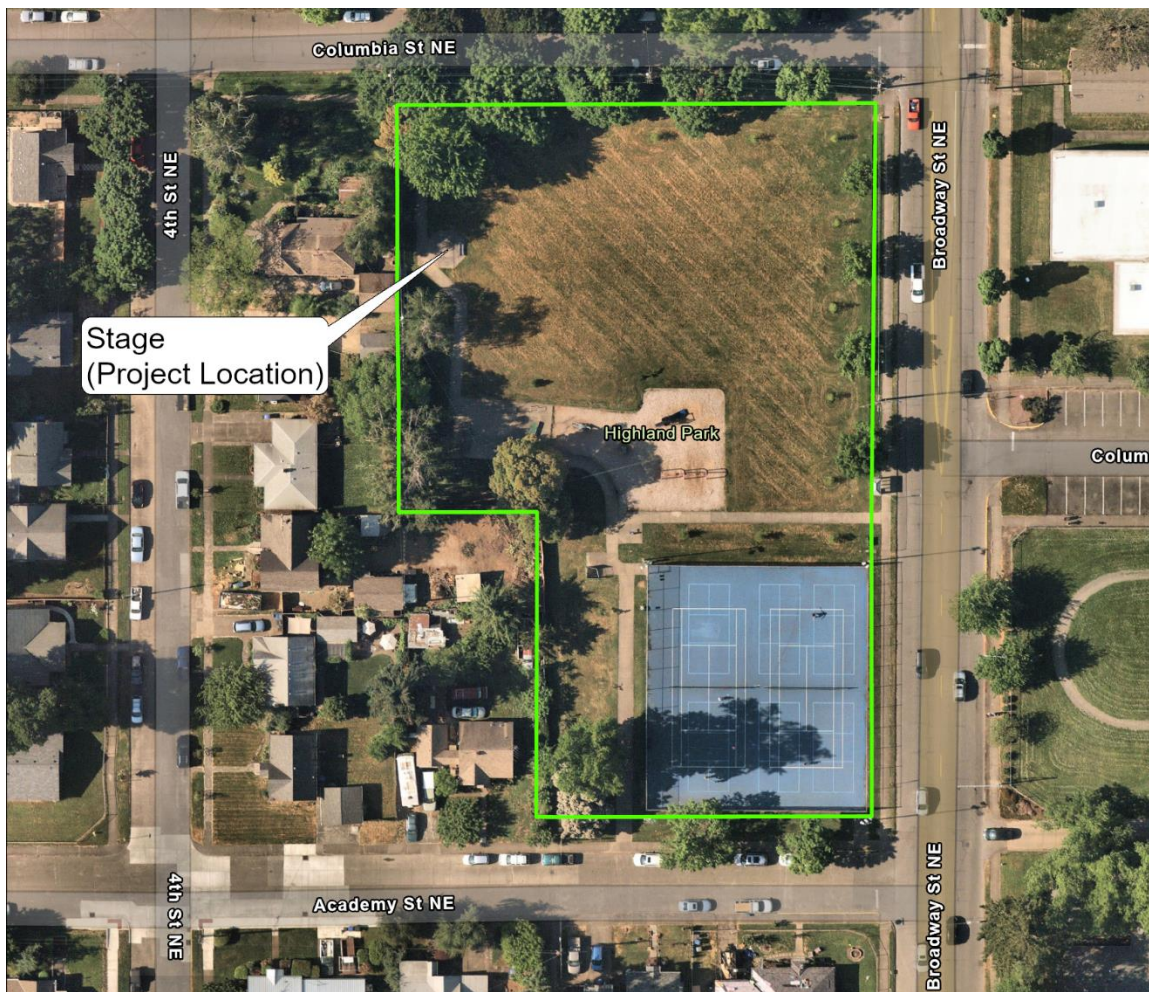


Figure 1: Highland Park project location

Lansing Park rapidly demountable shelter

Lansing Park is a neighborhood park featuring a large open lawn area, picnic tables, a playground and walking paths.

The northern portion of the site was formally known as Eastgate Basin Park. It is a multi-purpose area that provides both close-to-home recreation resources and flood risk mitigation. Regarding the latter, this portion of the park is designed and used as a backup detention basin to hold water to reduce downstream flooding when the surrounding public stormwater system experiences peak flows.

City park staff would like to explore design ideas for a *rapidly* demountable shelter that could be installed over a single picnic table. The idea is to have a crew of staff install the structure at the start of the dry season to provide shade and a place to rest during drier months. The structure could then be disassembled and relocated offsite during the wet season. The structure's parts should be relatively lightweight and easy to transport.

Lansing Park is located at 3203 Hawthorne Av. NE. The area directly north of the off-street parking lot located within the basin may be best suited for the structure.



Figure 2: Lansing Park project location

Geer Park viewing area shelter

The 2019–2023 State Comprehensive Outdoor Recreation Plan (SCORP) provides recommendations to guide federal, state, and local government, as well as the private sector, in making policy and planning decisions. The plan addresses five important demographic and societal changes facing outdoor recreation providers including:

- An aging population;
- An increasingly diverse population;
- Lack of youth engagement in outdoor recreation;
- An underserved low-income population; and
- The health benefits of physical activity.

SCORP details park-planning priorities based on demographics and two surveys, one of park providers and a second of Oregon residents. Based on the results of the resident survey, the plan identified “in your community” priority needs for Oregonians that park providers should invest in for the future. Among these priorities are the following:

- Nature and wildlife viewing areas.
- More places and benches to observe nature and others.
- More shaded areas.

One potential strategy to address these needs in Salem is to construct shelters over benches located along park trails and paths, particularly more accessible paths near natural areas, as wildlife viewing enhancements. To pilot this approach, City park planning staff have identified an opportunity at Geer Park.

Geer Park is a 44-acre community park in northeast Salem often characterized as a “sports park.” It features both paved and soft-surface paths, two baseball fields, two soccer fields, and Salem's only bike park. It also features two regional stormwater management ponds that receive and treat runoff from the surrounding neighborhood and portions of Interstate 5 right-of-way. Aside from managing runoff, the ponds and associated riparian vegetation create wildlife habitat near Mill Creek. As such, the park is used by a wide variety of birds, beaver, and other wildlife.

The potential site for this pilot project is an existing park bench located along a shared-use path facing one of the two stormwater management ponds. The project site is also located near an undeveloped area of the park slated to be developed within the next one-to-two years. The improvements will feature an approximately 19,500 square foot skate park and a separate people and wildlife viewing area with interpretive signage about traditional uses of native vegetation by people indigenous to the Willamette Valley and the area that is now known as Salem. This viewing and interpretive area will be located along the same park path as the proposed pilot project site, approximately 325 feet west.

Geer Park is located at 241 Geer Dr. NE.

Project ideas for Timber Tectonics in the Digital Age
City of Salem



Figure 3: Geer Park project location

City contact

Rob Romanek
Parks Planning Manager
City of Salem Community Services Department
555 Liberty St SE, Suite 325, Salem OR 97301-3515
Email: rromanek@cityofsalem.net
Office: 503-588-6211

Parks Operations Update – Sep 2023

Projects

- The picnic table installation on Edgewater has been completed. This project was part of the most recent SPIF awards.
- Wallace Marine Park crack and sealcoating project for the Sports Complex was completed. This was an extensive project that required the removal of the park bleachers at each field, as well as all items housed on any asphalt surface. Due to the expanse of the project, the project took a week to complete.

Parks and Recreation Services' Move

Parks and Recreation Division will be moving from their current locations of Civic Center and Building #14 at the Shops Complex into the new Public Works and Parks and Recreation Building. The temporary certificate of occupancy was granted for the new building. The building is now substantially complete and can be occupied, work on the final finishes, furniture and mechanical system commissioning will occur through the month of September. A ribbon cutting ceremony has been scheduled for October 3rd at 1:00 p.m. and staff will begin moving into the building the following week. Parks and Recreation is anticipated to move into the building approximately the mid part of October. Parks and Recreation Division includes, Parks Operations, Recreation Services, Parks Planning and Urban Forestry

Personnel Updates

Matt Johnston has been promoted to the position of Parks Supervisor. Matt previously was one of two Natural Resource Infrastructure Specialists with Parks. A recruitment to fill the vacancy is in process.

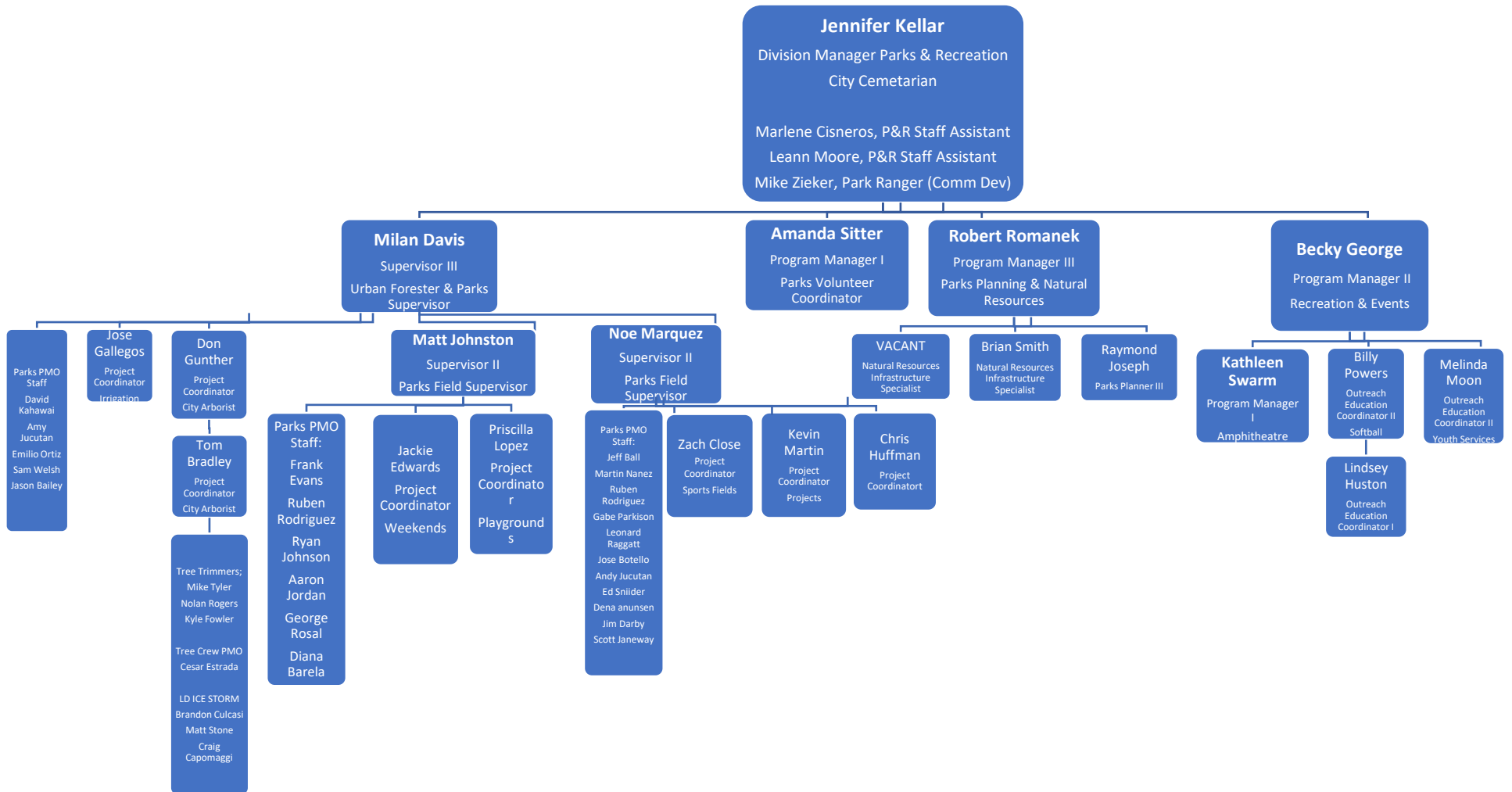
A Parks and Recreation Division Organizational Chart is attached for your reference encompassing the most recent staffing changes and consolidation of Parks and Recreation under Community Services.

Mission Street Parks Conservancy

We are pleased to share the Memorandum of Understanding between the City of Salem and Mission Street Parks Conservancy is being extended toward their work in Bush's Pasture Park. The City and Conservancy share goals for the park, including:

- Developing the public's appreciation of the Park's unique horticultural and historical assets;
- Managing and maintaining the Park's plant material to a high standard of health and aesthetics;
- Securing the health, longevity, and succession of the iconic White Oaks located in the Park;
- Encouraging use of the Park by the City's residents and visitors;
- Increasing the public's appreciation of the Park's unique horticultural and historic assets; and
- Ensuring the Park successfully meets the challenges of the future, including issues related to aging infrastructure, changing demographics, invasive species, and climate change.

Parks & Recreation Division Organization Chart



Salem Parks and Recreation Advisory Board Meeting Recreation Update–September 2023

1. Events/Facility Use

- The Movies in the Park and First Friday Concert Series had successful runs this summer and have completed their annual offerings.
- It was a wonderful summer! We saw the return of amazing annual community events such as the World Beat Festival, Salem Art Fair and Festival, IRONMAN, Family Fest, Fish Fest, Reventon De Verano, Pride in the Park, and the Carousel Cruise In.
- Facility use requests for the remainder of 2023 and even some for 2024 are being accepted in the newly opened Customer Service Center. Upcoming community events include the following:
 - West Salem Thursday Farmer’s Market, continues every Thursday, Edgewater Linear Park
 - Reflections on the River, September 7, Riverfront Park
 - Hands Across the Bridge, September 8, Riverfront Park
 - STRIDE 5K/10K, September 9, Riverfront Park
 - Community Salmon Day, September 9, Bush’s Pasture Park
 - Let’s Dance, September 10, Riverfront Park
 - Punx in the Park, September 16, Marion Square Park
 - Willamette Valley Marathon, September 17, Riverfront and Minto-Brown Island Parks
 - Hispanic Heritage Celebration-Viva Salem, September 23, Riverfront Park
 - Navy Band NW’s Popular Music Group Performance, September 29, Riverfront Park

2. Youth Recreation Programs

- We finished the summer providing programs to 2,324 participants and continued to provide about 30% of them a few waiver.
- We are entering the fall season of STRIDE 5k/10k events. Our September 9th event will start and end in Riverfront Park while the one on October 7th will take place in Minto-Brown Island Park.
- Our first Owl Prowl is taking place the end of September at Minto-Brown Island Park. Registration is going well, and we are keeping our fingers crossed for dry weather!!

3. Softball and Kickball Leagues/Tournaments

- We are currently in the middle of Fall Ball season with leagues playing every weeknight evening. The leagues will run until the last week of September or the first of October, weather permitting.
- The Wallace Marine Park Softball Complex recently hosted some USA Softball National Tournaments.
 - July 24-30 was the USA Softball Girl’s 12A/16A Western Fast Pitch National where 30 teams from California, Idaho, Montana, Oregon, Washington, and British Columbia Canada competed.
 - August 26-27 was the USA Softball Men’s D & E Western Slow Pitch National as well as the USA Women’s National Invitational Tournament where we hosted 30 teams from Alaska, Idaho Minnesota, Nevada, Oregon, and Washington.
- We’re looking forward to holding two additional USA Softball Girl’s Fast Pitch Invitational Tournaments on September 16-17 and September 23-24. Both weekends are sold out and have a waiting list.

Attached is the Parks and Open Space damage report. If you would like to be removed from this list or know if someone who should be added to the list, please let us know.



MEMO

TO: Jennifer Kellar, Parks and Recreation Division Manger
Community Services

DS

FROM: Leann Moore, Staff Assistant
Community Services

DATE: Sept. 8, 2023

SUBJECT: Damage to City of Salem Parks and Open Space

Damage to the City of Salem's parks and landscape maintenance areas caused by malicious mischief, theft, and reckless action is reported by the appropriate law enforcement agency, citizens, and maintenance personnel. The following is a list of incidents during August 2023. The dollar amount shown represents the estimated repair/replacement cost for the damage sustained.

A total value of \$2,110.00 in repair/replacement costs occurred from 83 incidents. In comparison, the total from August 2022 was \$1308.96 from 44 incidents.

cc: Keith Stahley, City Manager
Scott Archer, Deputy City Manager, Community Services
Trevor Womack, Chief of Police
Chris Hoy, City Mayor
Lt. Ben Bales, Commander, SPD
Irma Coleman, Neighborhood Services Specialist
Reed Godfrey, Deputy Fire Chief, SFD
Michelle Teed, Risk Manager
Jennifer Hingston, Management Analyst, SPD
Lt. Treven Upkes, SPD, Community Response Section
Robert Romanek, Parks and Natural Resources Planning Manager
Becky George, Recreation Supervisor

PARK_NAME	FREQUENCY	COST
Battle Creek Park	1	\$15.00
Bill Riegel Park	1	\$0.00
Brown Road Park	1	\$90.00
Bush's Pasture Park	2	\$0.00
Civic Center / Library	1	\$20.00
Edgewater Parkway	2	\$25.00
Geer Community Park	2	\$45.00
Gilbert House Children's Museum	4	\$0.00
Harry & Grace Thorp Park	3	\$75.00
Hoodview Park	4	\$55.00
Hoover Park	2	\$90.00
Lee Park	1	\$15.00
Marion Square Park	2	\$0.00
McKay School Park	6	\$410.00
McRae Park	1	\$15.00
Mill Race Beautification	1	\$20.00
Minto-Brown Island Park	3	\$100.00
Northgate Park	7	\$95.00
Orchard Heights Park	1	\$10.00
Pringle Park	1	\$0.00
River Road Park	1	\$25.00
Riverfront Park	21	\$525.00
Royal Oaks Park	2	\$30.00
Sunnyslope Park	1	\$35.00
Union Street Railroad Bridge	2	\$90.00
Wallace Marine Park	1	\$40.00
Weathers Street Park	8	\$245.00
Woodmansee Park	1	\$40.00
TOTAL	83	\$2,110.00