

Proposed Solid Waste Service Rates Effective January 1, 2024, and January 1, 2025

Solid Waste Committee

October 19, 2023

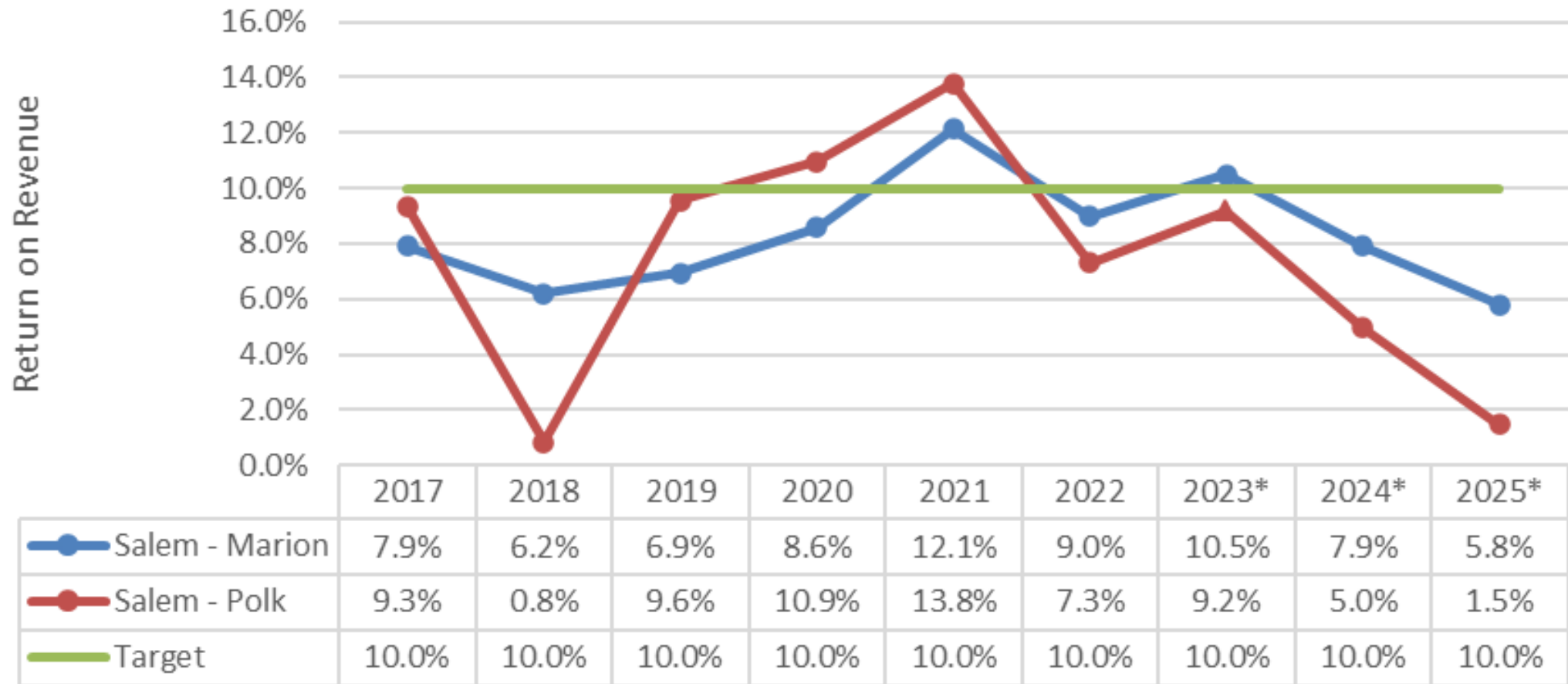
Resources

- ▶ Find Utility Providers for Your Home or Business
 - ▶ <https://www.cityofsalem.net/community/household/water-utilities/utility-payments-and-your-utility-account/utility-providers>
- ▶ Find Your Hauler
 - ▶ <https://mrtrashrecycles.com/>
 - ▶ Mid-Valley Curbside Collection App available on Google Play[®] or App Store[®]
- ▶ Low-Income Discount for Garbage Bill (and Salem Utility Bill)
 - ▶ <https://www.cityofsalem.net/community/household/financial-assistance-grants/discount-on-your-garbage-bill>

Changes Since Last Meeting

- ▶ Fuel Projections for 2023 and 2024 decreased:
 - ▶ 2023: -9.5% → -10.1%
 - ▶ 2024: 11.8% → 10.7%
- ▶ General Inflation projection for 2023, 2024, and 2025 increased:
 - ▶ 2023: 4.3% → 4.5%
 - ▶ 2024: 2.9% → 4.0%
 - ▶ 2025: 2.5% → 2.8%
- ▶ Adjustments to standardize management salaries
- ▶ Adjust outreach expense between fiscal periods
- ▶ Adjust professional services over 3-year period
- ▶ Adjustment to account for cost of low-income discount in 2024 and 2025

Historical and Projected Returns (with no increase)



* Projected 2023; Projected 2024 and 2025 with no rate increase

Projected Returns by Line of Business

(with no rate increase 2024 and 2025)

Line of Business	2023	2024	2025
-Cart (Residential)	8.5%	5.3%	2.7%
-Container (Commercial)	11.8%	9.6%	7.7%
-Drop Box	12.9%	11.1%	9.8%
Salem - Marion Total	10.5%	7.9%	5.8%
-Cart (Residential)	9.4%	5.3%	2.0%
-Container (Commercial)	7.6%	3.3%	-0.6%
-Drop Box	8.5%	3.4%	-0.9%
Salem - Polk Total	9.0%	4.7%	1.2%

Cost Factors	2023	2024	2025
Fuel	-10.1%	10.7%	0.0%
Labor	5.0%	5.0%	5.0%
Medical Insurance	15.8%	6.5%	6.5%
Disposal (expanded on next slide)	5.9%	0.7%	0.8%
Vehicle Depreciation	4.3%	2.9%	2.5%
General Inflation	4.5%	4.0%	2.8%

Disposal	2023	2024	2025
Combined Disposal Increase	5.9%	0.7%	0.8%
Covanta-Marion (Garbage)	-	-	-
Coffin Butte (Garbage)	3.9%	7.6%	7.1%
Yard Debris/Food Waste	23.2%	3.2%	3.1%
Commingle Recycling	60.3%	-	-

Salem - Marion Proposed Rate Increases

Line of Service	Jan-2024	Jan-2025
Cart Service - mostly residential	5.35%	3.35%
Container Service - commercial	0.00%	2.85%
Drop Boxes	0.00%	0.27%
Combined	2.54%	2.49%

Salem - Polk Proposed Rate Increases

Line of Service	Jan-2024	Jan-2025
Cart Service - mostly residential	5.61%	3.79%
Container Service - commercial	8.19%	4.33%
Drop Boxes	7.98%	4.79%
Combined	6.34%	4.00%

How Much Would My Bill Go Up?

► Salem-Marion

20 GALLONS



35 GALLONS



65 GALLONS



Salem-Marion Residential Cart Service	Current	Proposed 2024			Proposed 2025		
	2023	2024	Bi-Monthly Bill Variance	Annual Bill Variance	2025	Bi-Monthly Bill Variance	Annual Bill Variance
20 Gallon w/o Yard Debris*	\$43.30	\$45.60	\$ 2.30	\$13.80	\$47.10	\$1.50	\$9.00
20 Gallon EOW	\$44.20	\$46.60	\$ 2.40	\$14.40	\$48.20	\$1.60	\$9.60
20 Gallon	\$61.90	\$65.20	\$ 3.30	\$19.80	\$67.40	\$2.20	\$13.20
35 Gallon	\$69.50	\$73.20	\$ 3.70	\$22.20	\$75.70	\$2.50	\$15.00
65 Gallon	\$90.70	\$95.60	\$ 4.90	\$29.40	\$98.80	\$3.20	\$19.20

* Standard cart service includes garbage, recycling, and yard debris.

Salem-Marion	Current	Proposed 2024			Proposed 2025		
Container Service	2023	2024	Monthly Bill Variance	Annual Bill Variance	2025	Monthly Bill Variance	Annual Bill Variance
2-Yard	\$149.85	\$149.85	\$ -	\$ -	\$154.10	\$4.25	\$25.50
4-Yard	\$273.00	\$273.00	\$ -	\$ -	\$280.80	\$7.80	\$46.80
6-Yard	\$392.15	\$392.15	\$ -	\$ -	\$403.35	\$11.20	\$67.20



Salem-Marion	Current	Proposed 2024		Proposed 2025	
Drop Box	2023	2024	Variance	2025	Variance
20-Yard	\$483.80	\$483.80	\$ -	\$485.10	\$1.30
40-Yard	\$911.30	\$911.30	\$ -	\$913.75	\$2.45



How Much Would My Bill Go Up?

► Salem-Polk



Salem-Polk Residential Cart Service	Current	Proposed 2024			Proposed 2025		
	2023	2024	Bi-Monthly Bill Variance	Annual Bill Variance	2025	Bi-Monthly Bill Variance	Annual Bill Variance
20 Gallon w/o Yard Debris*	\$40.70	\$43.00	\$ 2.30	\$13.80	\$44.60	\$1.60	\$9.60
20 Gallon EOW	\$34.70	\$36.60	\$ 1.90	\$11.40	\$38.00	\$1.40	\$8.40
20 Gallon	\$51.50	\$54.40	\$ 2.90	\$17.40	\$56.50	\$2.10	\$12.60
35 Gallon	\$58.10	\$61.40	\$ 3.30	\$19.80	\$63.70	\$2.30	\$13.80
65 Gallon	\$70.30	\$74.20	\$ 3.90	\$23.40	\$77.00	\$2.80	\$16.80

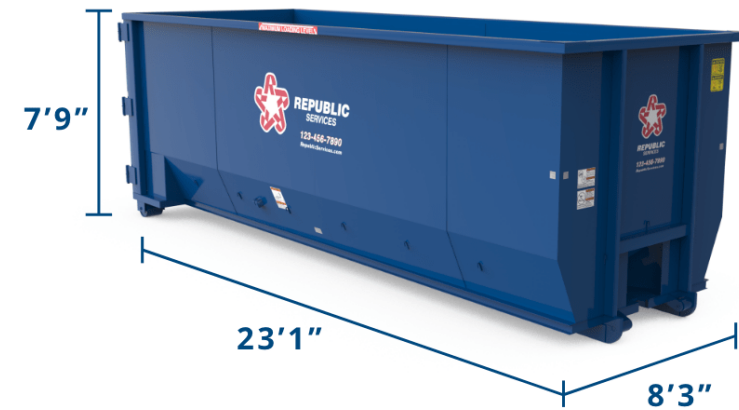
* Standard cart service includes garbage, recycling, and yard debris.

Salem-Polk	Current	Proposed 2024			Proposed 2025		
		2023	2024	Monthly Bill Variance	Annual Bill Variance	2025	Monthly Bill Variance
Container Service							
2-Yard	\$ 40.70	\$ 44.05	\$ 3.35	\$20.10	\$45.70	\$1.65	\$9.90
4-Yard	\$ 34.70	\$ 37.55	\$ 2.85	\$17.10	\$38.95	\$1.40	\$8.40
6-Yard	\$ 51.50	\$ 55.70	\$ 4.20	\$25.20	\$57.80	\$2.10	\$12.60



Salem-Polk*	Current	Proposed 2024		Proposed 2025	
		2023	2024	Variance	2025
Drop Box					
20-Yard	\$226.30	\$244.35	\$18.05	\$256.05	\$11.70
40-Yard	\$350.20	\$378.15	\$27.95	\$396.25	\$18.10

*Cost of disposal is billed separately based on actual tonnage.



Alternative Options to Standard Curbside Service

- ▶ 20-Gallon without yard debris
- ▶ 20-Gallon every other week
- ▶ 35-Gallon on-call
 - ▶ 35-Gallon cart collected only when customer calls to schedule pickup
 - ▶ Picked up on regular service day for route
 - ▶ Does not include recycling nor yard debris (can be added for extra charge)

Current Rates (Effective 1/1/2023)	Salem-Marion	Salem- Polk
35-Gallon On-Call Service with Add-Ons		
35-Gallon On-Call Service (\$/Pick-up)	\$ 12.10	\$ 10.65
Weekly mixed organics	\$ 12.00	\$ 11.50
Bi-weekly commingled recycling	\$ 13.25	\$ 13.25
	\$ 37.35	\$ 35.40
 35-Gallon Weekly Garbage Service	 \$ 34.75	 \$ 29.05
(Weekly garbage and mixed organics; bi-weekly recycling)		

Medical Waste

Pre-Tax Return on Revenue Service Level	Actual	Projected		
	2022	2023	2024	2025
Low-Volume (1-59 boxes/month)	8.2%	-0.6%	-14.8%	-31.6%
High-Volume (60+ boxes/month)	-12.6%	-8.5%	-16.8%	-24.5%
Hospital Collection	-2.1%	-2.4%	-7.8%	-10.9%
Combined	-2.1%	-4.2%	-13.9%	-23.7%

Medical Waste Disposal Fee	2023	2024	2025	2026
MC Adopted Rate \$/Ton	\$87.45	\$150.00	\$225.00	\$300.00
% Increase	0.0%	71.5%	50.0%	33.3%

Medical Waste

Proposed Rate Increase	Jan-2024	Jan-2025
• Low-Volume	21.5%	2.8%
• High-Volume	32.3%	6.5%
• Hospital Collection	29.9%	14.3%
Combined Total	28.8%	8.4%



Recommendation Options

Option 1	Option 2
<p>Rates Effective January 1, 2024; and Rates Effective January 1, 2025</p>	<p>Rates Effective January 1, 2024</p>
<p>Pros:</p> <ul style="list-style-type: none"> • Alternate rate-setting process with water/wastewater utility • Reduce staff time allocated to COSA • Option to re-evaluate 2nd year if cost factors changes significantly impact projected 2025 margin • Provides haulers with certainty of 2025 rates 	<p>Pros:</p> <ul style="list-style-type: none"> • Allows for consideration of more accurate cost factors for 2025 • Able to fully implement Solid Waste Policy in 2025 COSA (if policy is complete by this time)
<p>Cons:</p> <ul style="list-style-type: none"> • Increased variation of cost factors in 2nd year • May need to wait until 2026 rate-setting to fully implement Solid Waste Policy 	<p>Cons:</p> <ul style="list-style-type: none"> • Rate-setting process during water/wastewater process • Increased staff and Council time allocated to COSA

Summary of Proposed Rate Increases

Salem - Marion	Jan-2024	Jan-2025
• Cart Service - mostly residential	5.35%	3.35%
• Container Service - commercial	-	2.85%
• Drop Boxes	-	0.27%
Combined Total	2.54%	2.49%
Salem - Polk	Jan-2024	Jan-2025
• Cart Service - mostly residential	5.61%	3.79%
• Container Service - commercial	8.19%	4.33%
• Drop Boxes	7.98%	4.79%
Combined Total	6.34%	4.00%

Medical Waste	Jan-2024	Jan-2025
• Low-Volume	21.5%	2.8%
• High-Volume	32.3%	6.5%
• Hospital Collection	29.9%	14.3%
Combined Total	28.8%	8.4%

▶ Reduce Contamination

▶ Empty

▶ Clean

▶ Dry

▶ Recycle Guide

▶ MCRecycleGuide.net

▶ Find Your Hauler

▶ mrtrashrecycles.com

RECYCLE RIGHT

MIXED RECYCLING GUIDE



Paper & Cardboard

Office paper/junk mail
Cereal-type Boxes
Greeting Cards
(no foil or glitter)
Magazines
Newspaper
Phone Books
Paperback Books
Paper Bags

Papel y Cartón

Papel de oficina/ Correo no Deseado
Cajas de cereal
Tarjetas de felicitación
(sin aluminio o glitter)
Revistas
Periódicos
Libros telefónicos
Libros de tapa blanda
Bolsas de papel



Plastics

Bottles
Jugs

Plásticos

Botellas
Gallones



Metal

Steel (tin) cans
Aluminum cans

Metal

Latas de acero (estaño)
Latas de aluminio



There may still be opportunities to recycle some items that can not be placed into the mixed recycling roll cart. Visit mcRecycleGuide.net to learn of other possible options.

Todavía puede haber oportunidades para reciclar algunos artículos que no pueden colocarse en el bote del reciclaje mixto. Visita mcRecycleGuide.net para conocer otras opciones posibles.

EMPTY, CLEAN, DRY

VACÍO, LIMPIO, SECO



Curbside Recycling

PLACE ROLL CARTS AT THE CURB 4 FEET APART FROM OTHER ITEMS BY 6 AM ON COLLECTION DAY
MIXED RECYCLING IS COLLECTED EVERY OTHER WEEK -- REFER TO COLOR CODED CALENDAR



Mixed Organics

These Items Go In The
MIXED ORGANICS ROLL CART:

All Food

Breads, Grains, Coffee
Grounds, Tea Leaves, Dairy
Products, Egg Shells, Bones,
Fruits, Vegetables, Meats,
Proteins, Seafood & Shells



Some Paper

Coffee Filters, Tea Bags,
Food-soiled Napkins, Paper
Towels, & Pizza Boxes (No
Frozen Food Boxes)



Plants

Grass Clippings, Yard
Prunings, Leaves, Pine
Needles, Weeds, Flowers
& Floral Trimmings (No
Poison Oak)



NOTICE

- All mixed organics must fit inside the roll cart with lid completely closed
- Please do not place organics in plastic bags
- Unacceptable or incorrectly prepared materials will be charged a contamination fee

Mixed Recycling

These Items Go In The
MIXED RECYCLING ROLL CART:

Paper & Non-Waxed Cardboard

INCLUDING
Junk Mail
Gift Wrap (No foil, Ribbons & Bows)
Magazines
Newspaper
Paperboard
Phone Books & Paperback Books
Office Paper



Plastics *Rinse First!*

Plastic Bottles larger than 12 oz
Plastic jugs larger than 12 oz
(discard caps and pumps)



Metal

Tin & Aluminum Cans - *Rinse first!*
Paper Labels not required to be removed but can be added to the cart separately



NOTICE

- All mixed recyclables must fit inside the roll cart with lid completely closed
- Please do not place recyclables in plastic bags
- Unacceptable or incorrectly prepared materials will be charged a contamination fee

Small Recycling Bin

These Items Go In The
SMALL RECYCLING BIN:

Household Batteries

Alkaline, rechargeable, and small button cells. Sizes AAAA through D, 6 Volt - 9 Volt. Must be sealed in a zip-sealed bag.



Usable Latex Paint and Oil Based Paint

Place up to 2, one-gallon labeled cans. Please; NO rusty cans!



Used Motor Oil

In a sealed, leak-proof, plastic screw-top container.



Antifreeze

Place into screw-top see-thru plastic jug. Keep separate from motor oil.



Glass Bottles & Jars

Please keep bottle and jars empty, clean, and dry!
No other types of glass please.



Vegetable Cooking Oil

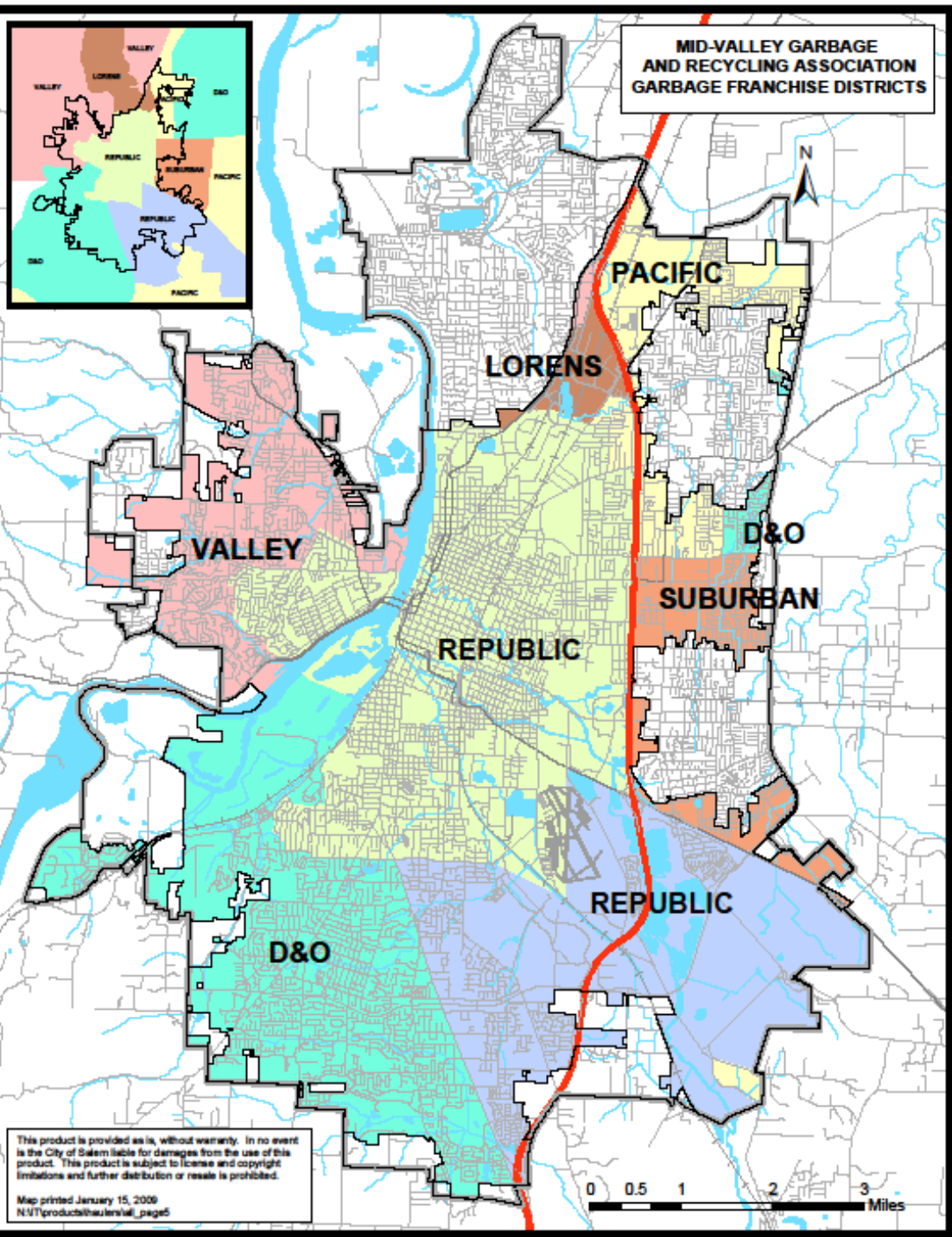
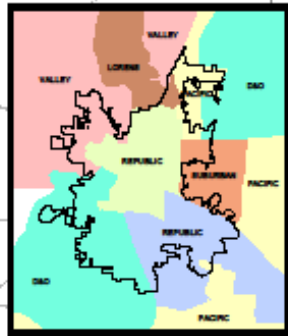
Place up to 2 gallons of cooled oil into original or clean see-thru plastic screw-top container.



IMPORTANT

The items above must be placed inside the small recycling bin

MID-VALLEY GARBAGE
AND RECYCLING ASSOCIATION
GARBAGE FRANCHISE DISTRICTS



This product is provided as is, without warranty. In no event is the City of Salem liable for damages from the use of this product. This product is subject to license and copyright limitations and further distribution or resale is prohibited.

Map printed January 15, 2009
N:\T\products\haurer\val_page5