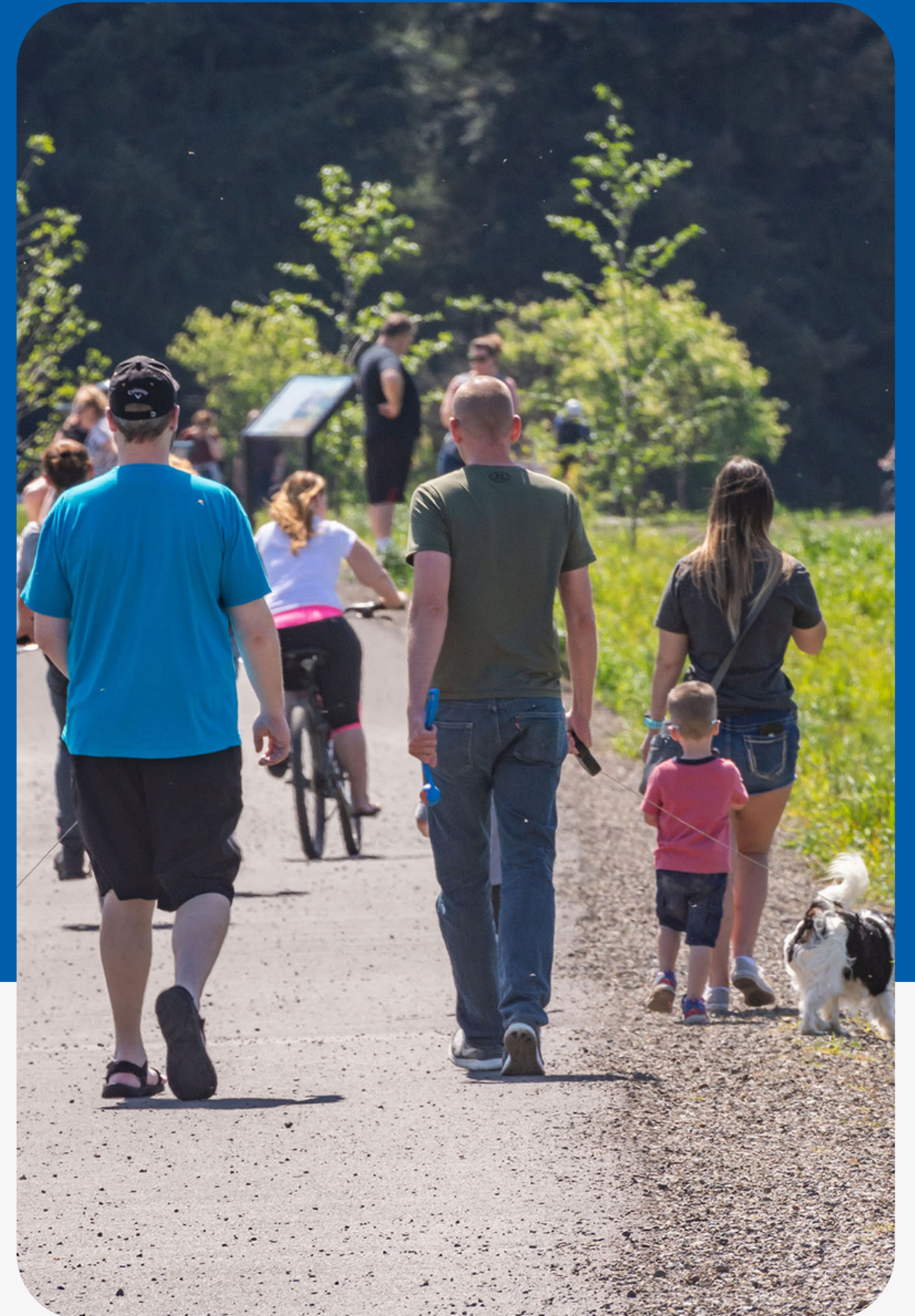




Parks for All

A project to update the Salem Comprehensive Park System Master Plan

Presented to Salem Equity Roundtable
November 21, 2023



Why?

Salem has some beautiful and enjoyable parks. However, there is a perception of corresponding disinvestments in some areas – an inequitable park system.

Why now?

In 2022, we adopted OUR SALEM, an update to the City's Comprehensive Plan.





The term equity refers to the fairness or justice of a situation or distribution.

The Dictionary of Human Geography, second edition, 1986

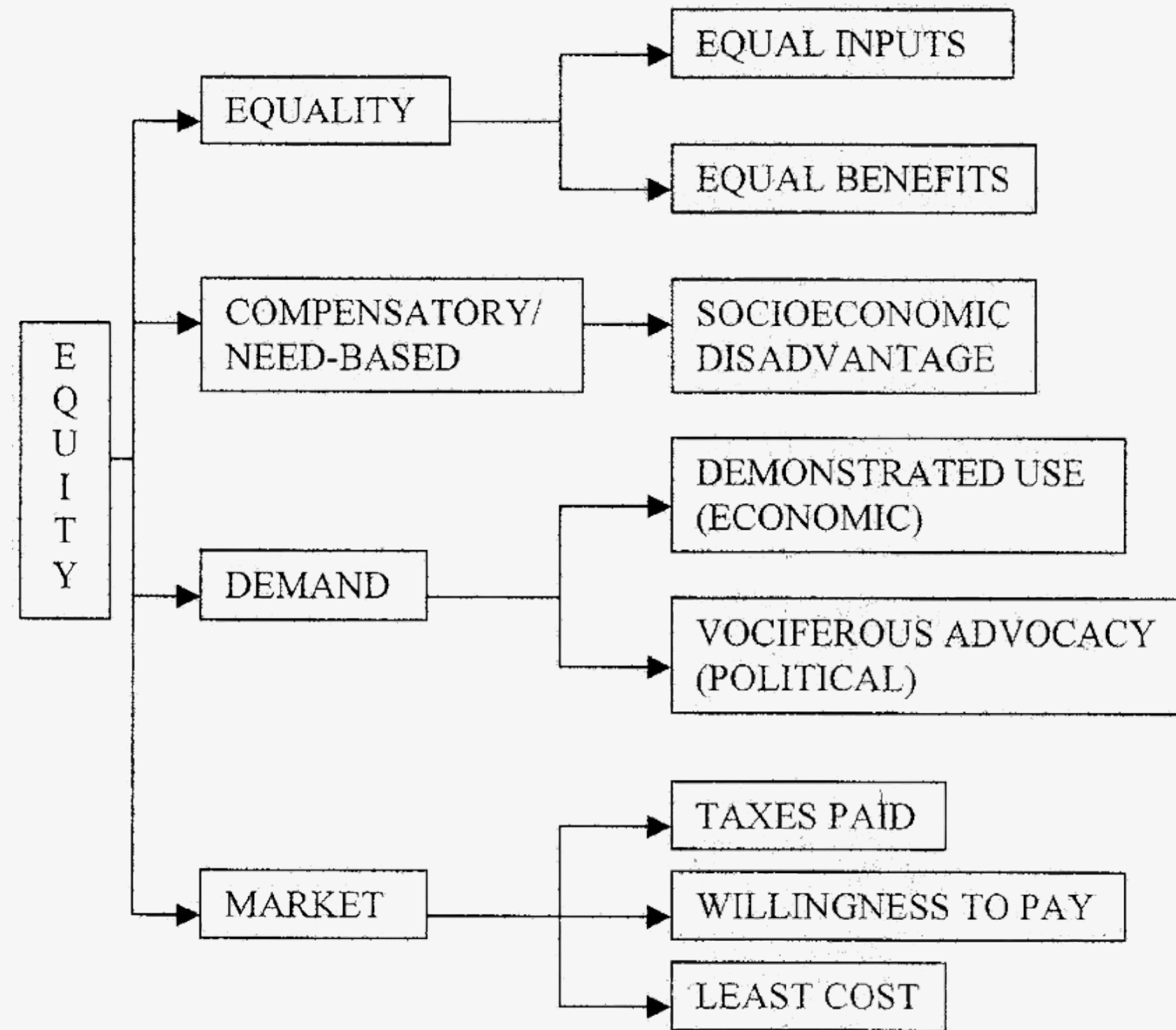
Equality



Equity



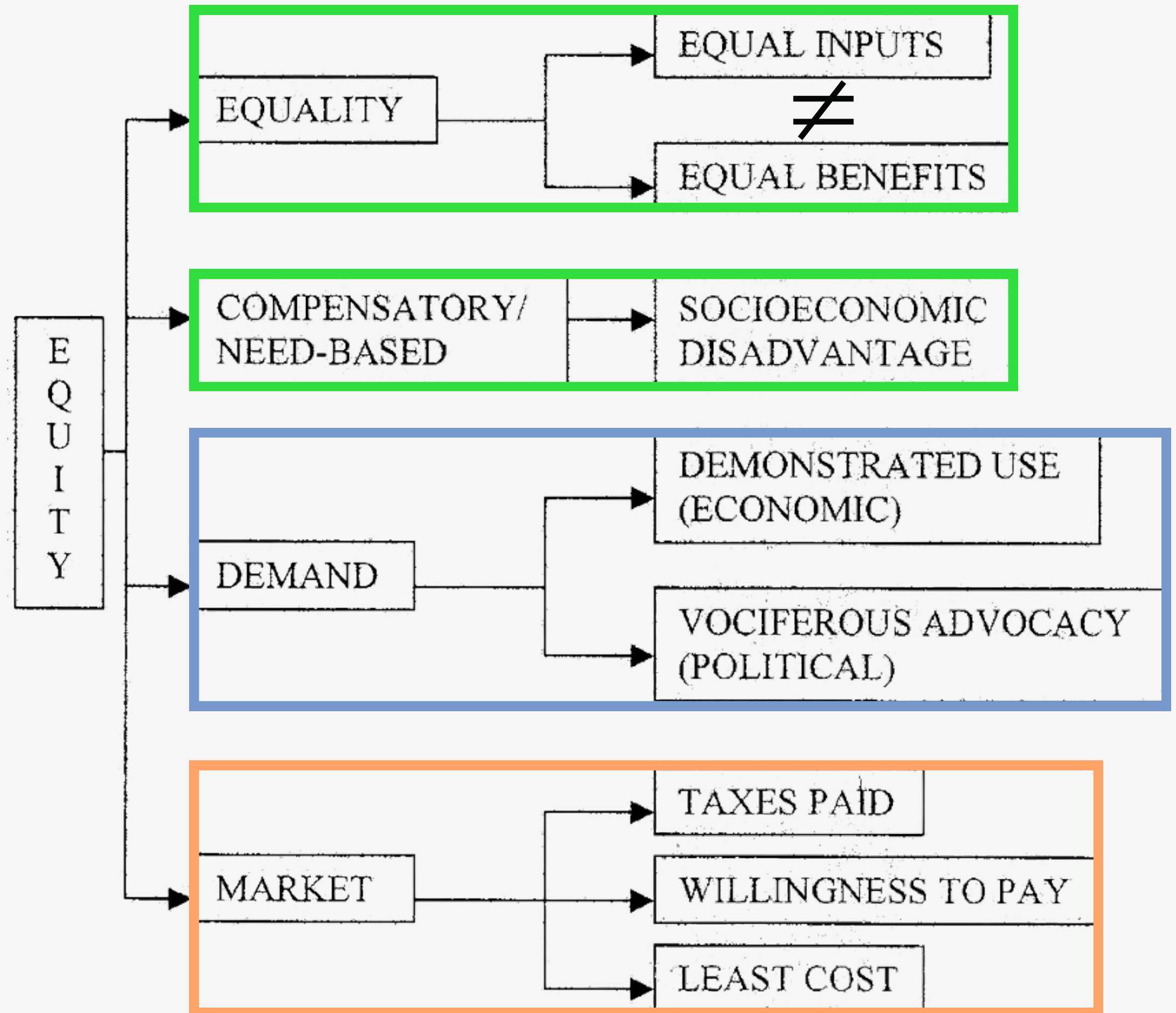
Taxonomy of equity models



Borrowed from Nicholls (2001), after Lucy (1981), and Crompton and Wicks (1988)

Nicholls, Sarah. (2001). Measuring the accessibility and equity of public parks: A case study using GIS. *Manag. Leis.* 6. 10.1080/13606710110084651.

Taxonomy of equity models



New level of service framework

	Level of service		
	<i>Provision</i>	<i>Development</i>	<i>Operations</i>
<i>Quality</i>	✓	✓	✓
<i>Function</i>	✓	✓	✓
<i>Capacity / Utilization</i>	✓	✓	

Condition

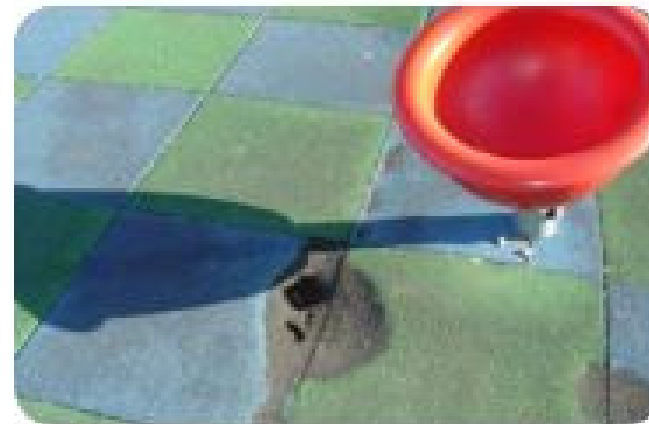
PLAYGROUNDS

GOOD



Play Equipment is fully intact and generally compliant with safety standards. Equipment may have minor cosmetic flaws that do not affect use. *Safety Surfacing* is installed where recommended and well maintained. Surfacing meets safety standards. Edging and borders successfully contain sand, wood chips, or other loose material. *Drainage* is functional and the playground is generally usable the day after rain.

FAIR



Play Equipment is damaged in parts or missing minor pieces, but the majority of the equipment is usable and compliant with safety standards. *Safety Surfacing* is installed where recommended but may need repair or replenishment to meet safety standards. Edging and borders only partially contain loose materials. *Drainage* issues create muddy areas or pooled water after a rain, but use is rarely affected.

POOR



Play Equipment needs major repairs or replacement to be compliant with safety standards. Damaged or missing components limit play opportunities. *Safety Surfacing* is absent or damaged beyond repair in multiple areas. Loose material is not contained and requires frequent replenishment. *Drainage* is poor and regularly affects use. Rain and/or irrigation create large areas of pooled water or mud that limits use and damages safety surfacing.

Inclusivity



Utilization

Current

Facility Type	Existing Quantity	Current Service Level	Proposed Standard	Total Additional Facilities Needed to Meet Proposed Standard		
				Current (2010)	Future (2035)	Total
Park Amenities						
Picnic Area	53	1 / 2,918	-	-	-	-
Group Picnic Area/Shelter	10	1 / 15,464	1 / 10,000	5	12	17
Playground	49	1 / 3,156	-	-	-	-
Community Garden	8	1 / 19,330	-	-	-	-
Amphitheater/Stage	7	1 / 22,091	-	-	-	-
Dog Park	2	1 / 77,319	1 / 25,000	4	5	9
Dock (Fishing or Boat)	6	1 / 25,773	-	-	-	-

Example from City of Portland



Increased distance from home means increased travel time, increased length of stay and decreased frequency of visits.



Need-based equity

Example from Los Angeles County

Social Barriers Dimension:



- Prevalence of:
- » Young Children
 - » Elderly
 - » Non-English Speaking Residents
 - » Single Parent Households
 - » Poverty
 - » Unemployment
 - » Majority-Minority Population

Transportation Barriers Dimension:



- » Limited Active Commuting
- » Limited Automobile Access
- » Limited Public Transit Access
- » High Traffic Density
- » High Pedestrian Injuries

Dimensions of Population Vulnerability

Health Vulnerability Dimension:

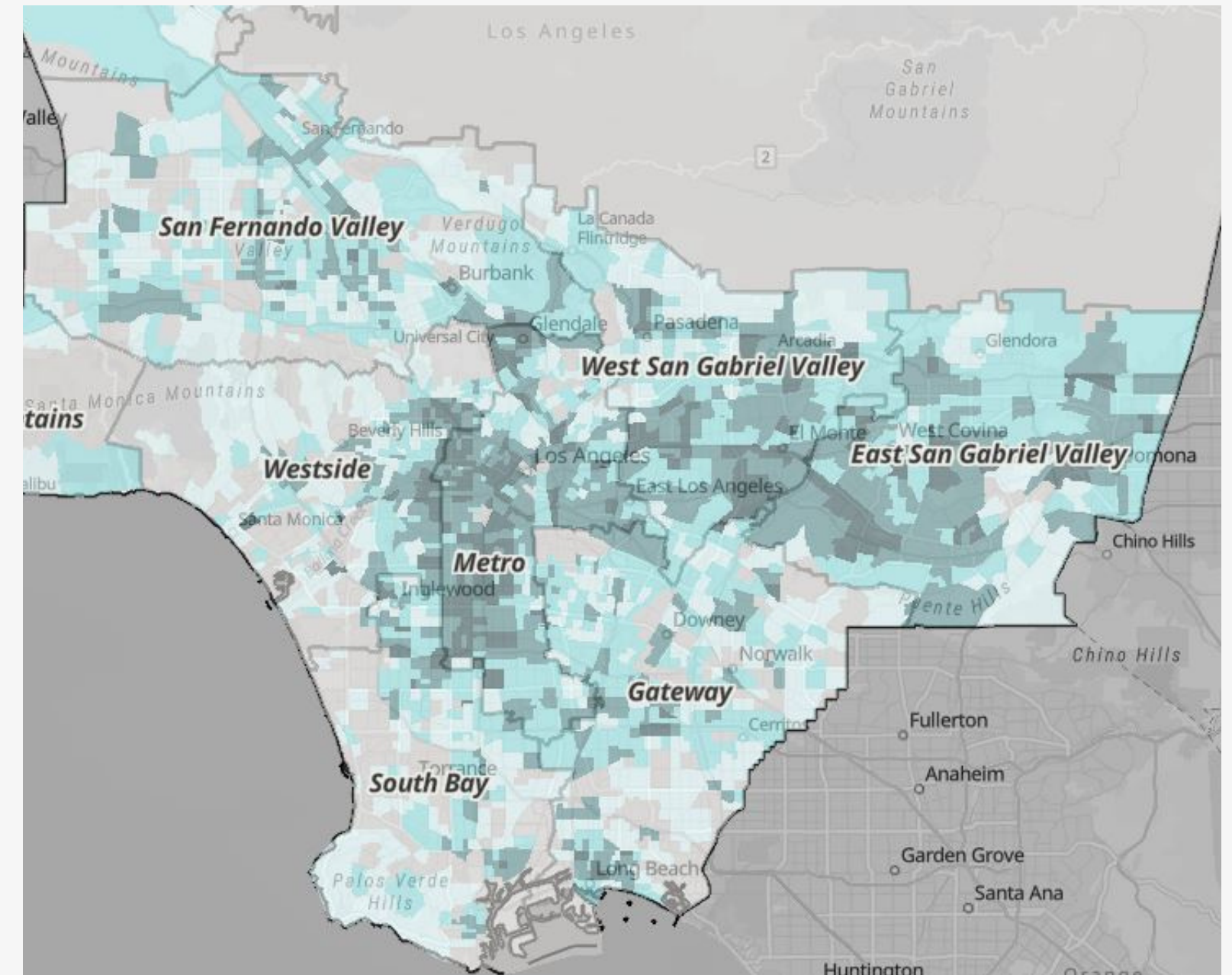


- » Reduced Life Expectancy at Birth
- » High Pollution Levels

Environmental Vulnerability Dimension:



- » Limited Park Access
- » Limited Tree Canopy
- » High % of Impervious Surface
- » High Excessive Heat Days
- » High Urban Heat Island Index Score



Process

Phase 1

Where does Salem Parks and Recreation stand today?

GOAL

Understand our community dynamics and existing park system



Phase 2

Where does Salem Parks and Recreation want to be in the future?

GOAL

Develop a shared community vision and identify key projects



Phase 3

How does Salem Parks and Recreation get there?

GOAL

Prioritize implementation actions and identify funding strategies



Steering and Advising the Project

- Project Streeting Committee
- Salem Equity Roundtable
- Staff Technical Advisory Committee



Potential partnerships

- **University of Oregon, College of Design**
 - Spatial justice course (winter term)
 - Dedicated park course (spring term)
- **Oregon State University, College of Forestry**
 - Recreation survey
- **Enterprise Services - internal**
 - Data strategy pilot

Questions