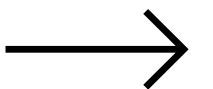




Minto Brown Island Eagle Watch Volunteer Program

VOLUNTEER TRAINING
February 10, 2024



Training Structure

WELCOME & INTRODUCTIONS

BALD EAGLE BACKGROUND

NEST MONITORING PROGRAM

USING SURVEY123

VOLUNTEER DETAILS

CLOSING



First, let's meet the team.



- * Amanda Sitter, Volunteer Coordinator
- * Jennifer Mongolo, Senior Natural Resources Planner
- * Jeffery Johnson, Natural Resources Planner
- * Matt Johnston, Parks & Rec Division Field Supervisor
- * Michael Medina, GIS Analyst
- * Mike Zieker, Park Ranger

Bald Eagle Background

Bald Eagle Facts

- Females in Oregon are around 14 pounds and males around 10 pounds
- 7,000 feathers, which weigh twice as much as their skeleton
- 30 mph flight and
- Up to 100 mph during dives
- Eagles in the wild can live to 30 years and in captivity up to 50 years
- Bald eagle pairs mate for life unless one of the pair dies



Bald Eagle Background

Biology and Nesting

- Courtship/nest- November to January
- 1-3 eggs - February/March, 3-6 days
- Incubation - February to April, 35 days
- Hatching - March to May, 3-6 days
- Nestlings - March to August, 10-12 weeks
- Fledging - June to August, by week 12
- Post fledging and dispersal - June to November
- First 6 weeks after fledging the young eagles typically stay close to the nest and are fed by the adults



Bald Eagle Background

Population Decline and Recovery

- 1963: 417 breeding pairs
- 1978: 1 active breeding area in the Willamette River Watershed
- 2007: 84 active breeding areas in the Willamette River Watershed
- 2019 estimates for the Lower 48 States:
 - 71,467 breeding pairs
 - 316,700 individuals
- Now nest in 32 of 36 Oregon counties
- Increasing numbers have led bald eagles to adapt to nesting in different locations



Bald Eagle Background

Population Decline and Recovery

- As numbers have increased bald eagles have adapted to use different habitats
- Some now nest closer to disturbance and have adapted to increased competition for nesting locations
- Each individual and pair has their own level of acclimation to disturbance
- What would cause one pair to abandon a nest might be a daily occurrence for another pair that does not abandon a nest



Why monitor bald eagle nests?

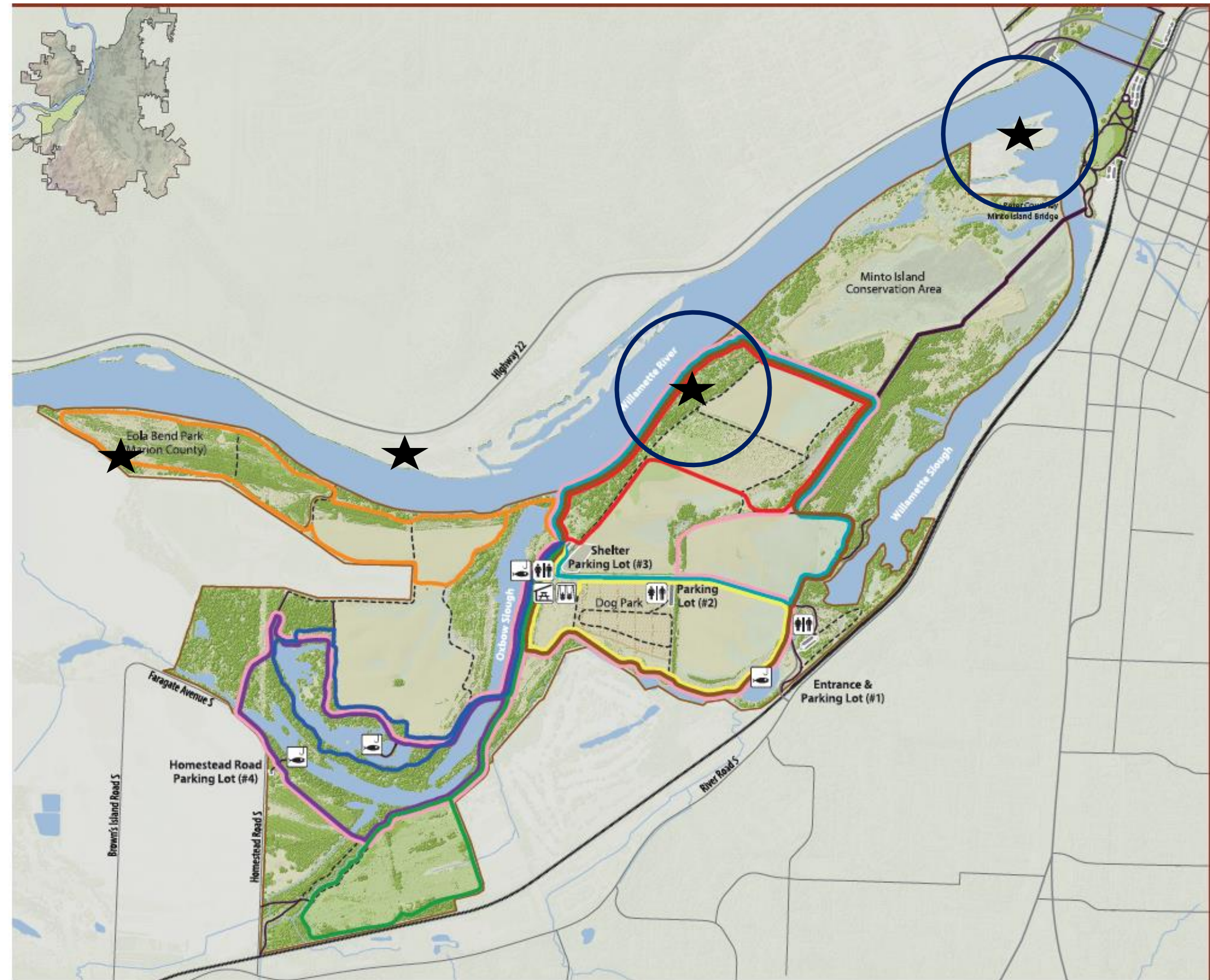


→ Balance the needs of the bald eagle pair with recreation and park management.

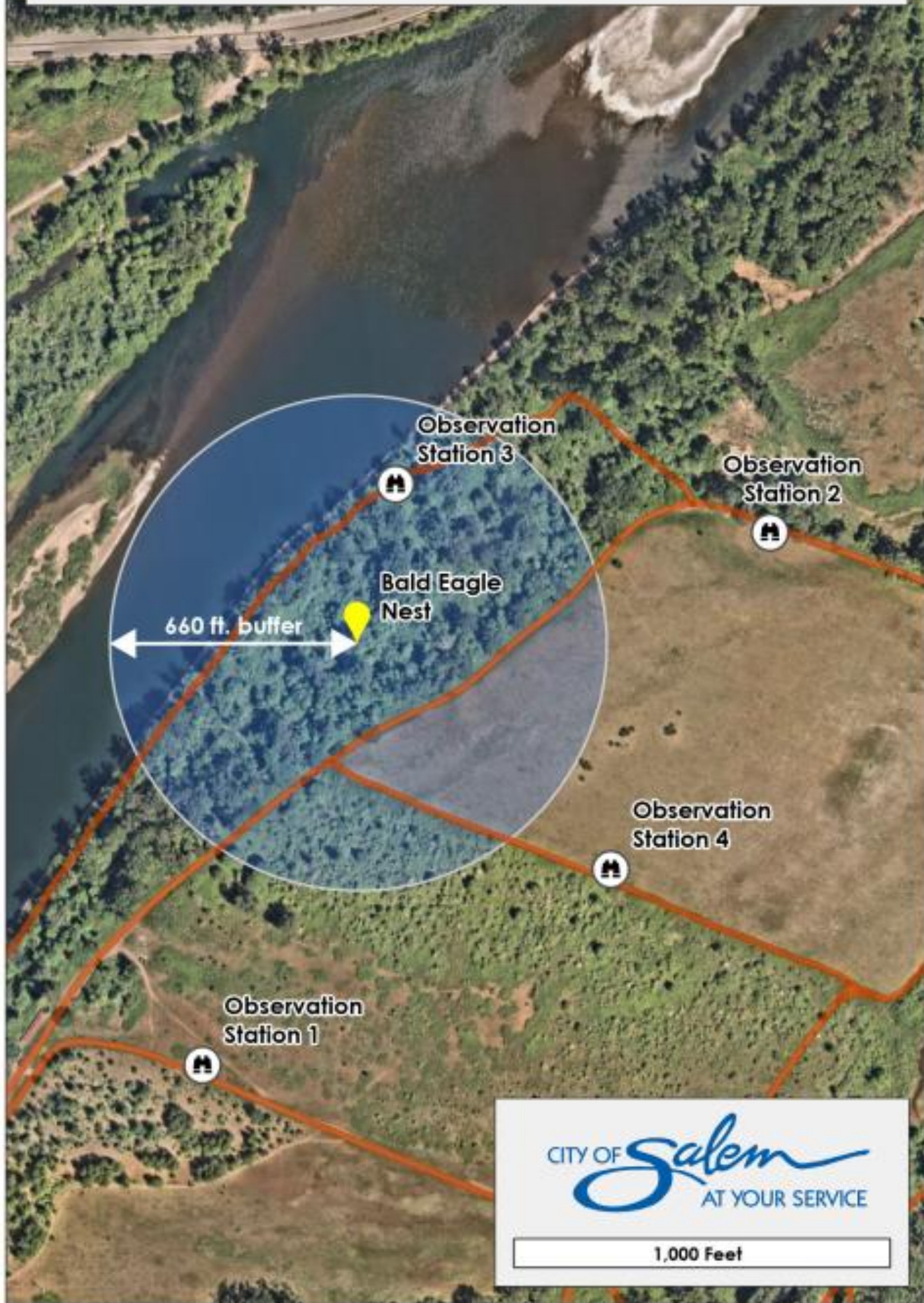
With eyes in the field on a regular basis we can:

- track the status of the nest
- determine which activities are likely to interfere with nesting, and
- document nesting progress and results.

Nest Locations



Minto Brown Island Park Bald Eagle Nest



Audubon Property Bald Eagle Nest





Methodology



Adapted from the US Fish and Wildlife Service Region 1
Bald Eagle Minimum Nest Monitoring Protocols - FWS R1
Suggested Methods.

PROTOCOL :

Observation Periods

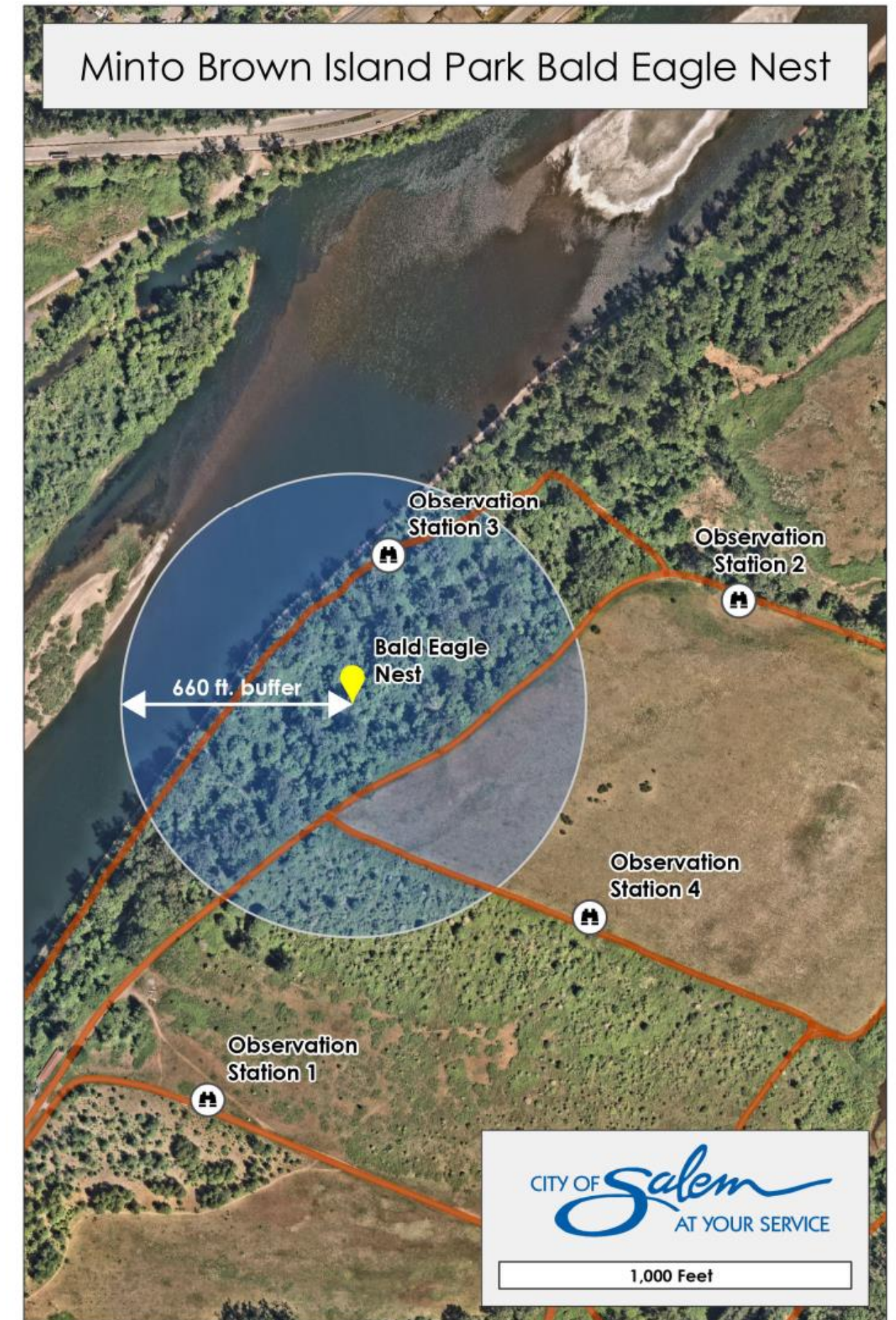
- 2 hours (120 minutes) per survey
- Weekly or biweekly preferred
- Surveys should occur between 1 hour after sunrise to 2 hours before sunset



PROTOCOL:

Observation Locations

- Choose 1 of the 4 observation locations when you sign up.
- Plan to conduct the full survey from that location.
- If you arrive and cannot find a good view of the nest, move to another location where you can see it better.
- Indicate observation location using map in Survey123.



PROTOCOL :

Survey Questions

- Nest Site, Location, Observer Name, Date, Start Time, Duration
- Number of Adult Eagles
- Number of Nestlings
- Signs of nesting activity
- Observed eagle behaviors
- Human activities in buffer
- Disturbance from activities?
- Level of recreational use
- Notes/comments

DATA SHEET 2023

City of Salem Eagle Watch Program



Please submit your data directly on Survey 123 (arcg.is/0PK1ai) within 48 hours.
If you are not able to enter the data online, please mail or drop your data sheets off at:

City of Salem, Public Works Dept
555 Liberty Street SE, Room 325
Salem, OR 97301
Attention: Jennifer Mongolo

Nest Site Surveyed (check one): Audubon Nest Minto Brown Island Park Nest

Observation Location – Mark your approximate location on the attached maps.

Observer Name: _____

Date: _____

Start Time: _____ End Time: _____

Survey Duration (in minutes): _____

Number of Adult Eagles Observed: _____

Note: only count the nesting pair associated with the nest site you are surveying. Observations of other adult or subadult eagles entering or passing through your observation area should be include in notes.

Number of Nestlings Observed: _____

Note: only count eaglets/young that hatched this nesting season. Subadults observed in the area should be included in notes.

Are there signs of nesting activity or an active nest? (Check all that apply)

- Eagle/pair of eagles present on nest
- Eagle/pair of eagles present in nest tree
- Eagle/pair of eagles perched in the vicinity of the nest/nest tree
- Eagle(s) carrying stick(s) to or near the nest
- Eagle carrying prey item to the nest
- Eagle in incubating position in the nest (usually head observed only)
- Chicks/nestlings in the nest
- Fresh sticks/greenery/other items in nest, or other evidence of nest maintenance
- Whitewash on branches around nest or on ground/vegetation beneath nest
- Prey items on ground beneath nest
- None

If you need to report an incident that requires immediate response, please call the Public Works Dispatch at 503-588-6063.

Page 1 of 2



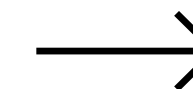
Expectations

- Bring your own binoculars or spotting scope.
- Bring appropriate attire, water, snacks, etc.
- Download and use Survey123 on your personal cellular device or use the web version of Survey123 using field data sheets.
- Follow the established methodology.
- Submit data in Survey123 within 48 hours of the survey.
- Be respectful of other park users.
- Abide by park rules.

If you need to report an incident
that requires immediate response,
please call the
Public Works Dispatch number.

503-588-6033

If you witness an emergency, call 911.



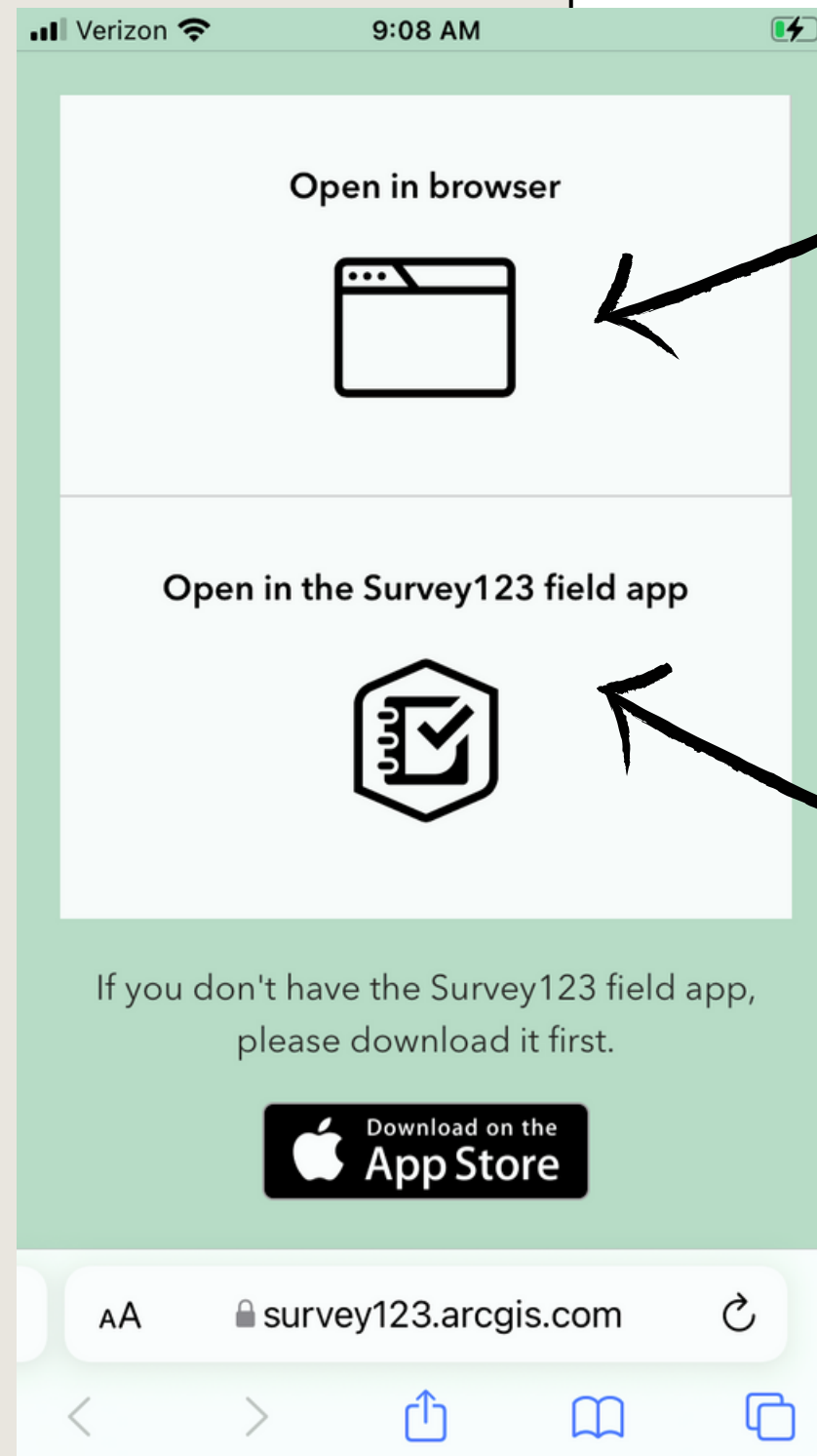
Using Survey123 to
record your observations



ArcGIS Survey123

Esri

Two Options

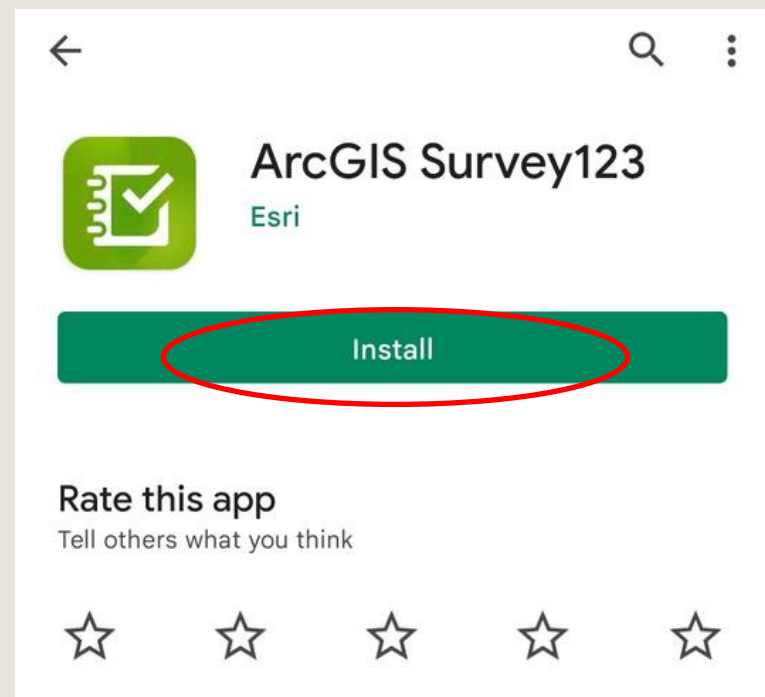
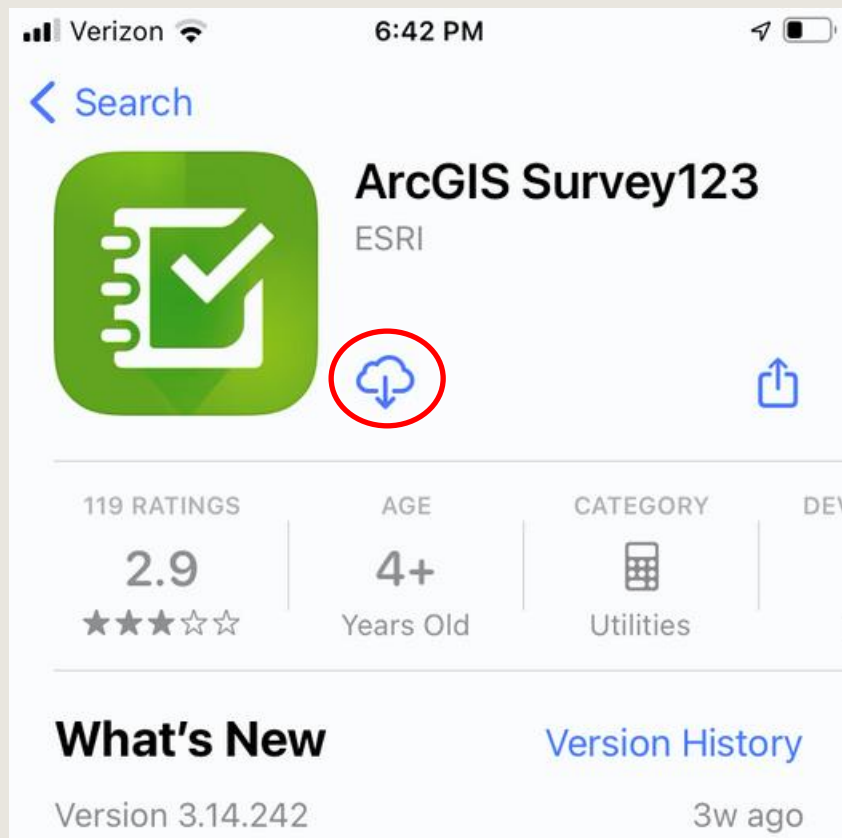


Record observations on printed Field Data Sheets and transcribe data to Survey123 at home on your web browser

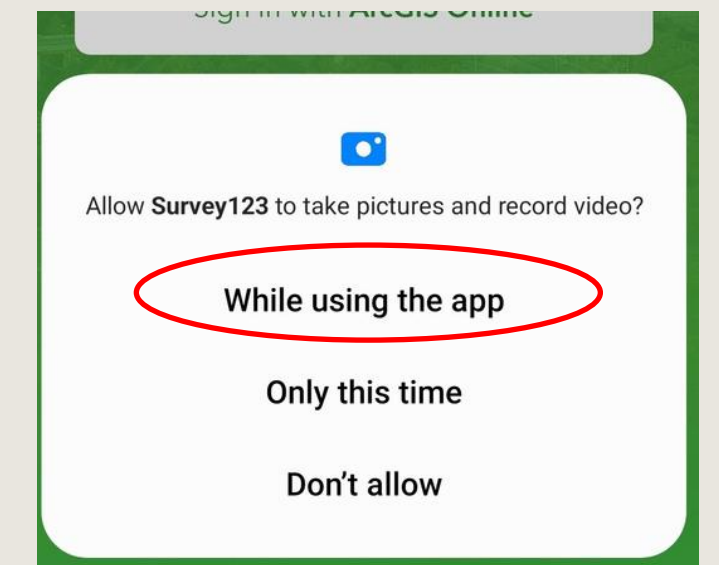
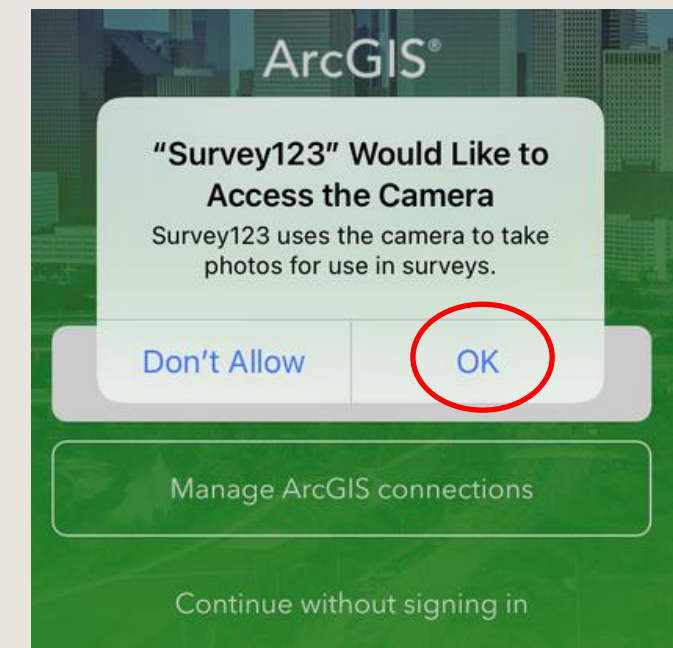
Download Survey123 on your mobile device and record observations directly in the app while in the field

How to set up Survey123 on your mobile device:

01 Go to your **app store** and search for and **install "ArcGIS Survey123"**

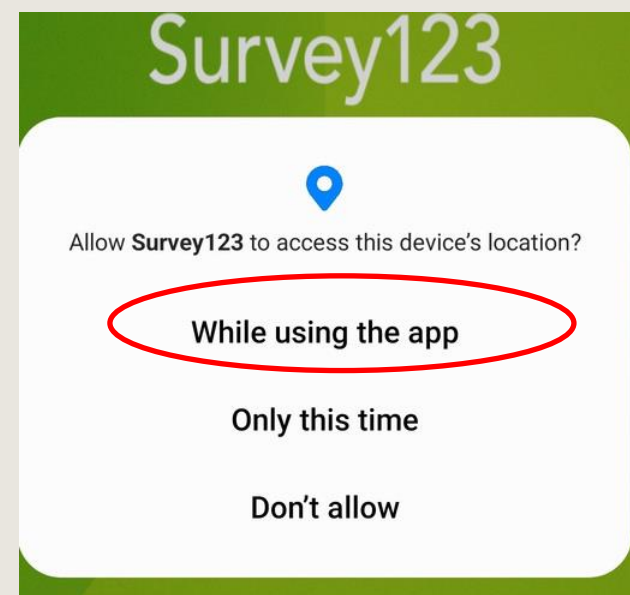
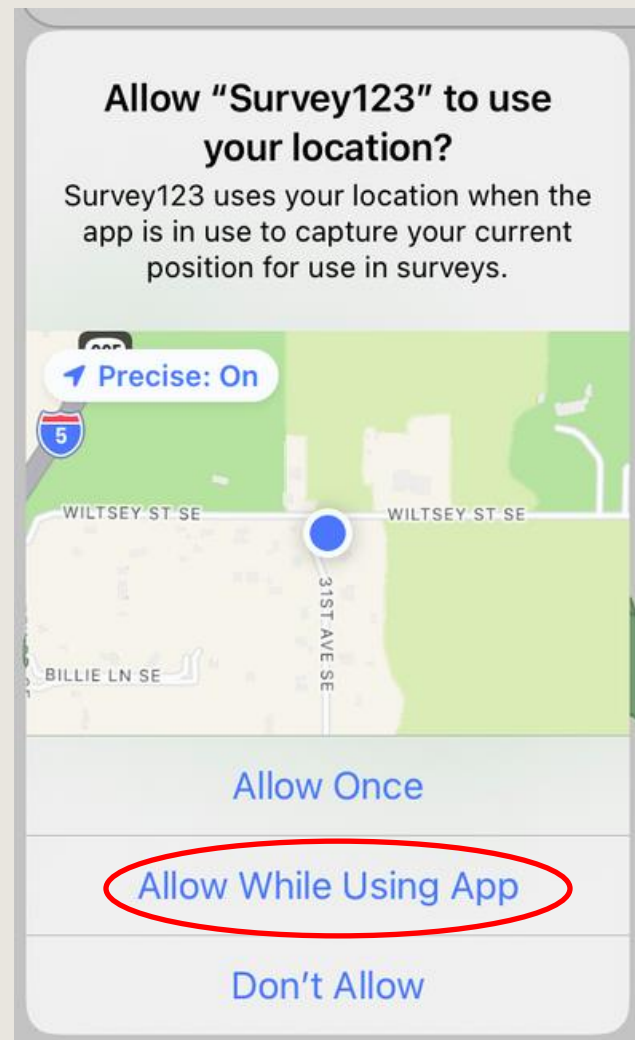


02 Open the app and select **"ok"** or **"While using the app"** to the question about accessing the **camera/pictures**.

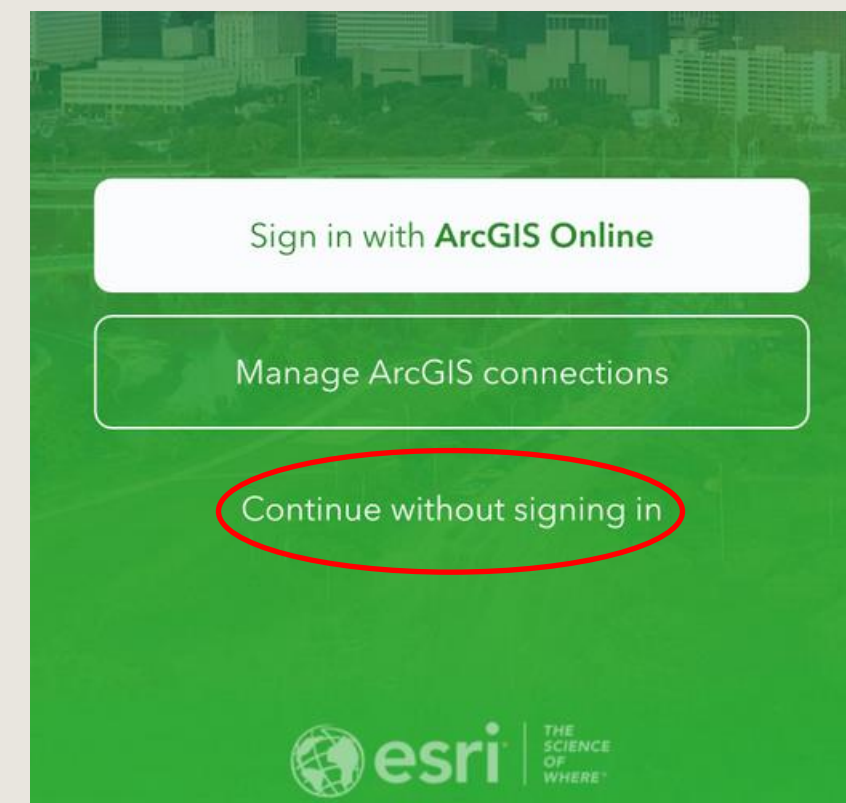


How to set up Survey123 on your mobile device:

- 03** Select "**While using the app**" to the question about **location** services.

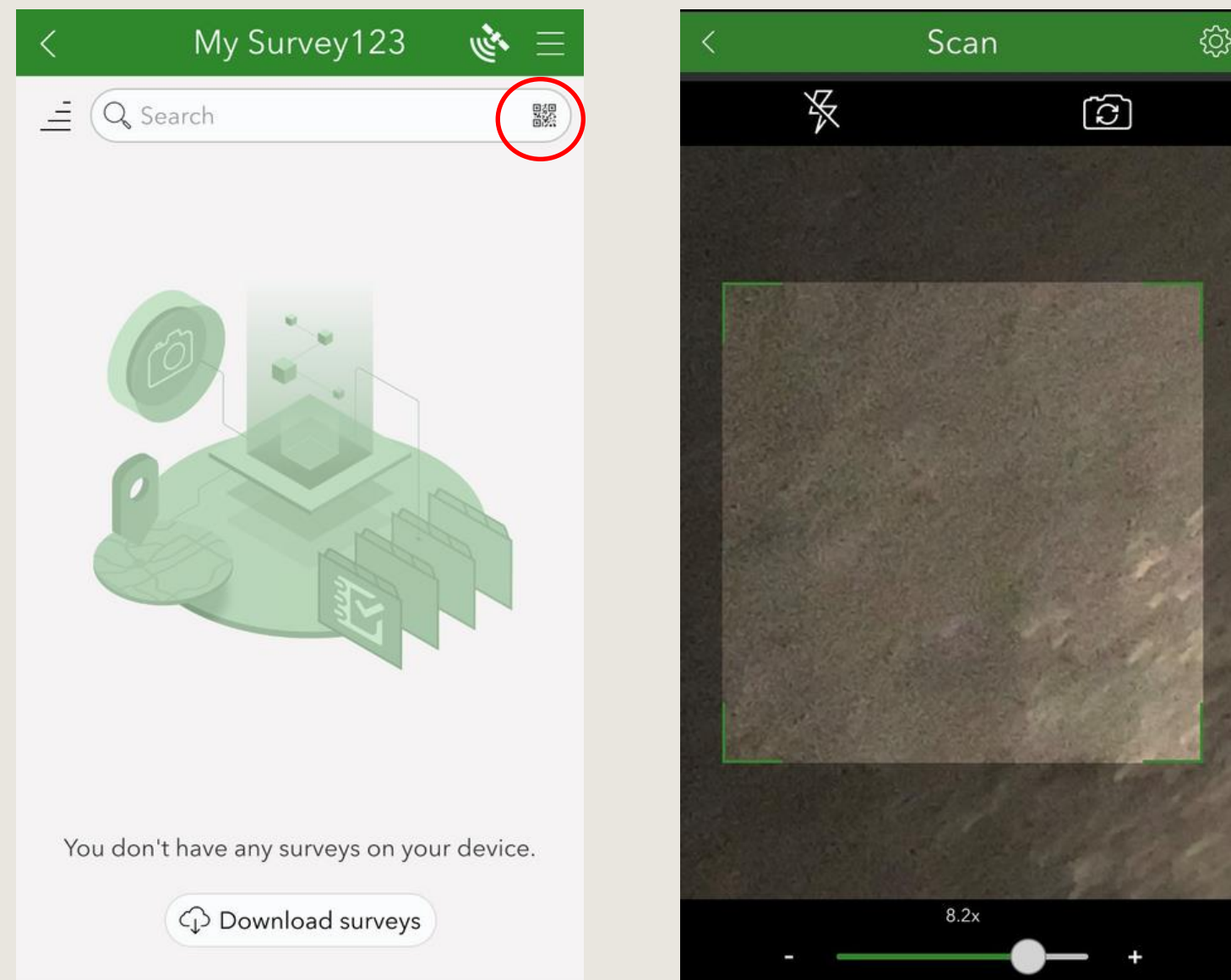


- 04** On the login screen, select "**Continue without signing in**" (unless you already have an account set up with ESRI that you'd like to use)

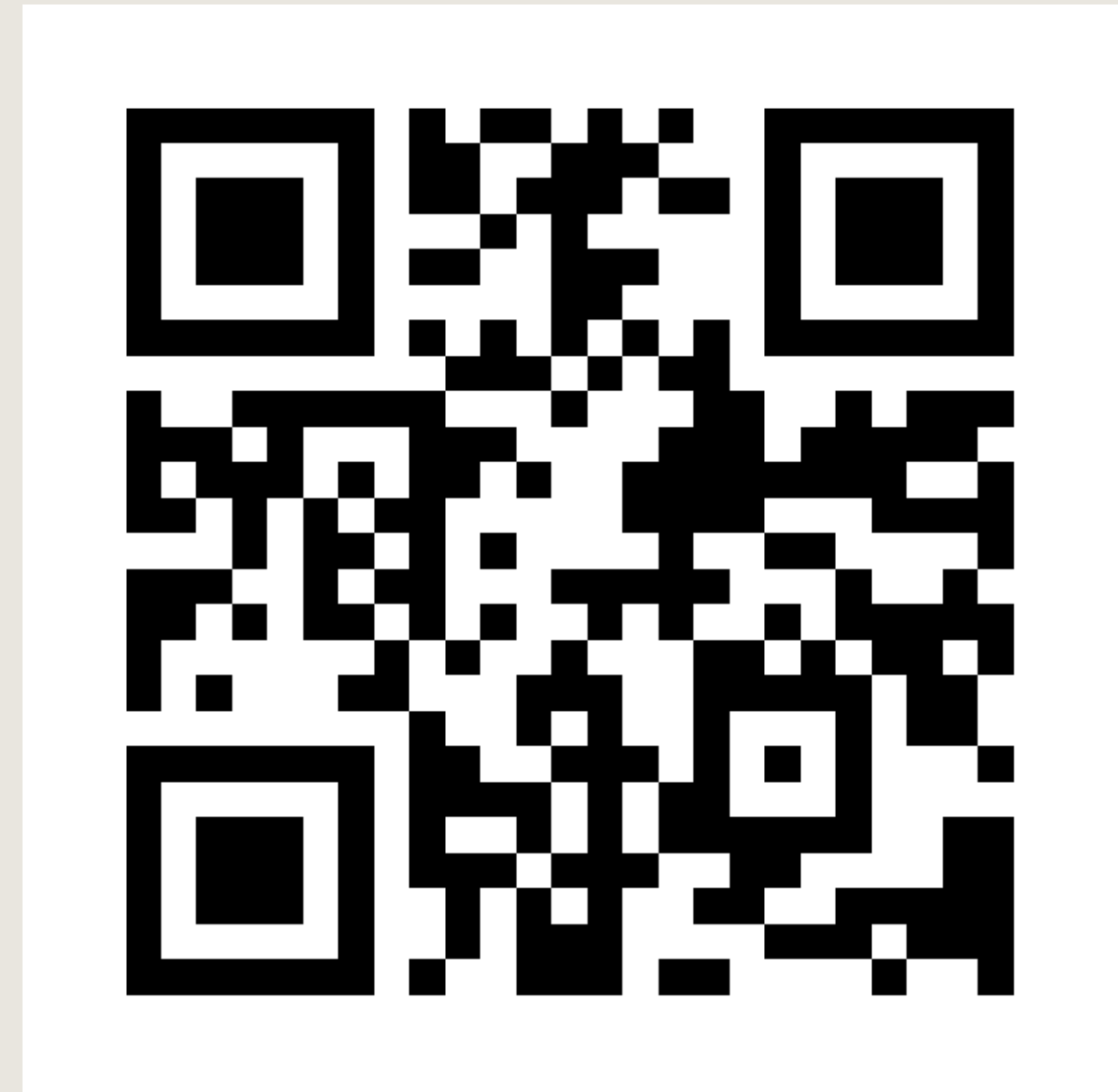


How to set up Survey123 on your mobile device:

- 05 In the app, look at the **search** field and tap the **QR code** button.

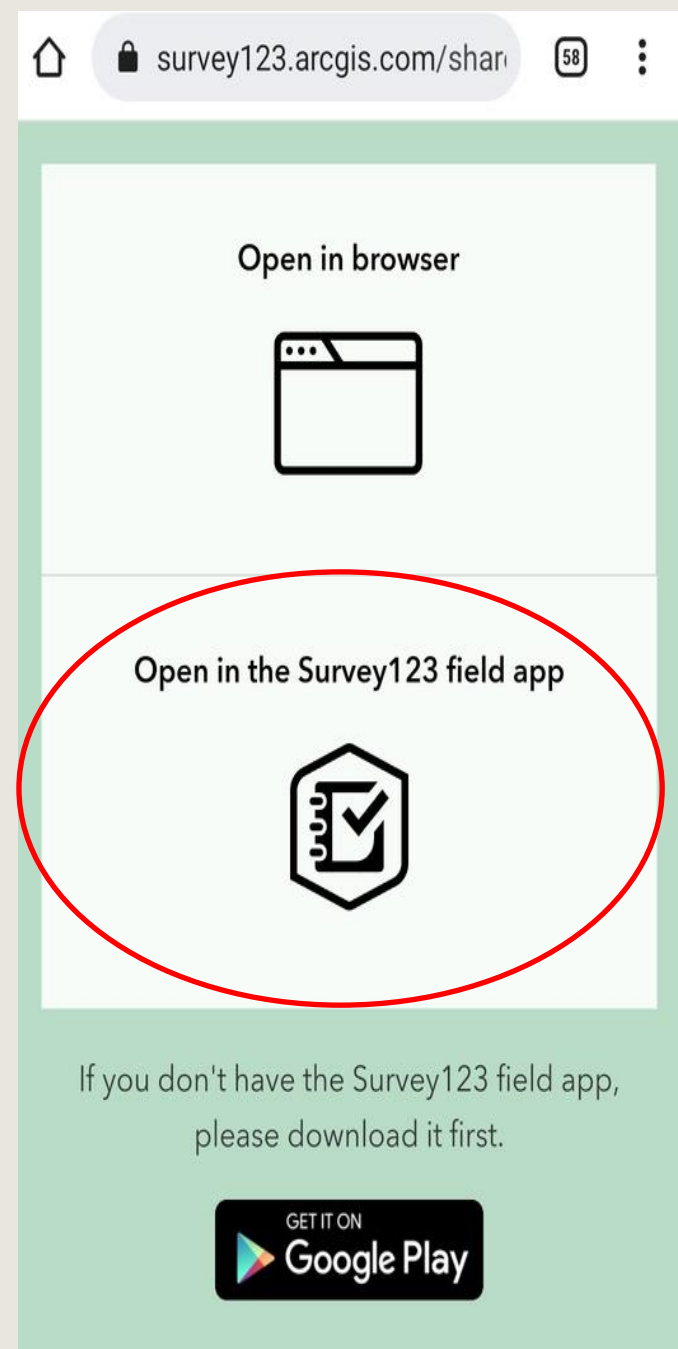


- 06 Point your camera at the QR Code below to scan it.



How to set up Survey123 on your mobile device:

- 07 On the next screen select "Open in the Survey123 field app"

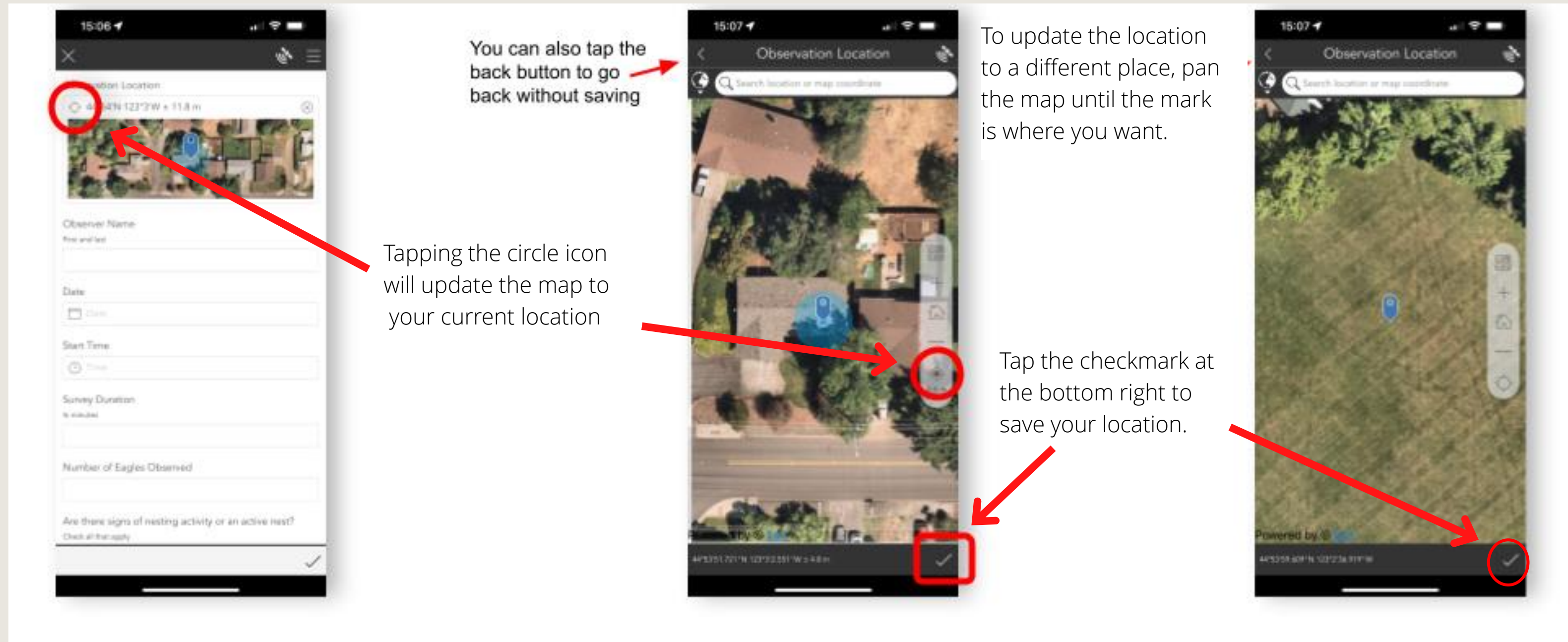


- 08 Scroll through the questions and notice they should be the same as those on your printed questionnaire. The main difference is the map at the top of the page that you will use to indicate your observation location.

The screenshot shows the Survey123 mobile interface with a map at the top. The map displays the observation location with coordinates 44°52'N 122°60'W ± 4.9 m. Below the map, there are several form fields: 'Observer Name' (First and last), 'Date', 'Start Time', and 'Survey Duration' (In minutes). The interface includes a close button (X) and a menu icon (three lines) at the top right. A checkmark is visible at the bottom right corner.

Collecting Data in the Survey123 Field App

Update the location: Tap the map to expand it to full screen. Then use the circle icon to zoom to your current location, or you can zoom in/out and pan around until the pin is in the right place. Then tap the checkmark to go back to the previous screen.



Collecting Data in the Survey123 Field App

Enter your:

- **Location**
- **first and last name**
- **date**
- **time you started the survey**
- tap the "X" in the upper left corner
- select **"Save in Drafts"**

You will see both a **"Collect"** button and a **"Drafts"** button. When you are ready to add more data, tap the **"Drafts"** button and then the draft survey you want to edit.

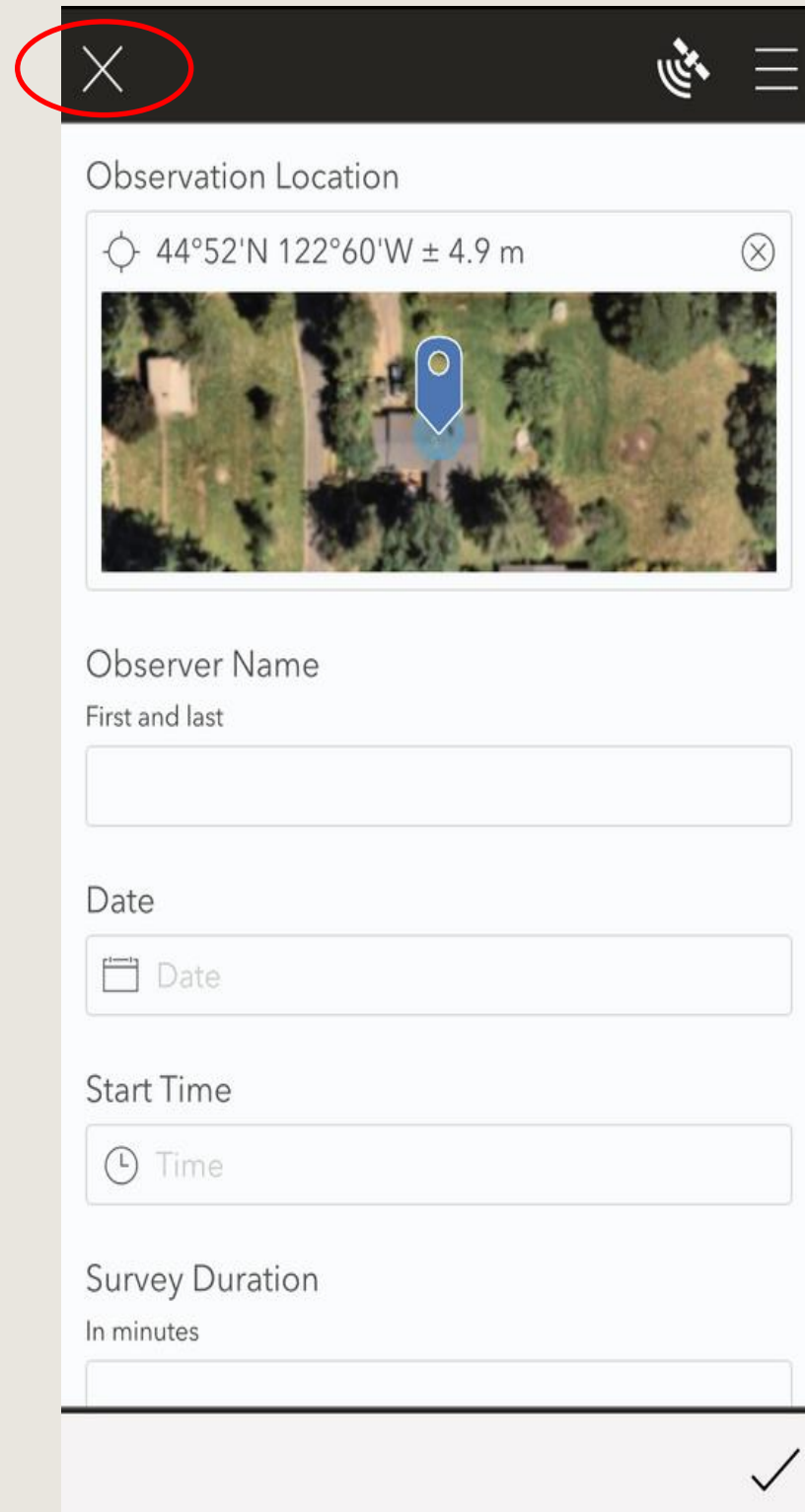
After your observation period, check over all your survey responses for accuracy and completeness. Add notes and upload any photos you want to share. Then **use the checkmark at the bottom right to submit your survey**. You will then be asked if you want to **"Send now"**, **"Continue the survey"**, or **"Save in Outbox"**. When ready, select **"Send now"**.

NOTE: You cannot edit a survey once it has been submitted. If you need to make a change, please email Amanda to let us know.

How to set up Survey123 on your mobile device:

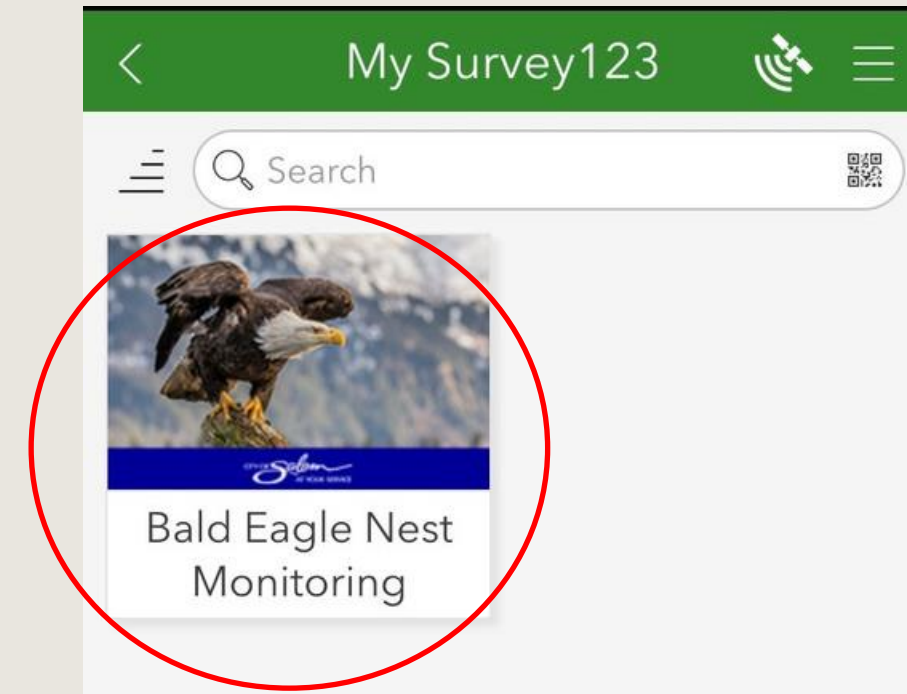
- 09 For now, let's close the survey and select **"Save in Drafts"**.

Use this option when you have started a survey but aren't ready to submit it. This will allow you to come back to it later to enter more information or make edits.

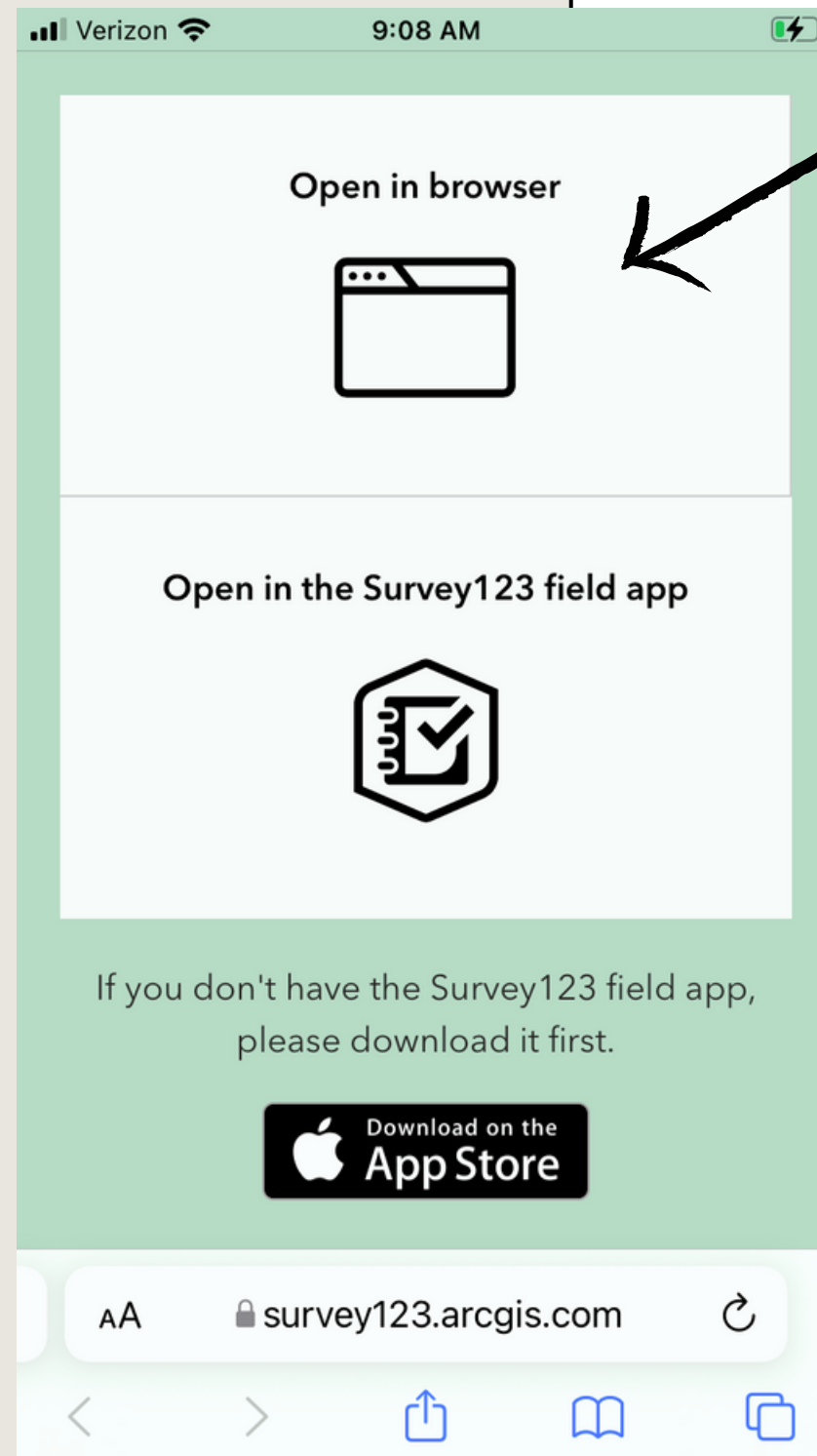


The screenshot shows the Survey123 app interface. At the top, there is a black header bar with a white 'X' icon circled in red, indicating the 'Save in Drafts' option. Below the header, the 'Observation Location' section displays the coordinates '44°52'N 122°60'W ± 4.9 m' and a satellite map with a blue location pin. The 'Observer Name' section has a text input field labeled 'First and last'. The 'Date' section has a date picker labeled 'Date'. The 'Start Time' section has a time picker labeled 'Time'. The 'Survey Duration' section has a text input field labeled 'In minutes'. A checkmark icon is visible at the bottom right of the form.

- 10 The **"Bald Eagle Nest Monitoring"** survey is now saved in your Survey123 app and will be accessible directly from the app for future use.



Option #2



Record observations on printed Field Data Sheets and transcribe data to Survey123 at home on your web browser

<https://arcg.is/0PK1ai>

Download Survey123 on your mobile device and record observations directly in the app while in the field

→ Navigating the volunteer webpage



- Useful Links
- Sign-up genius
- www.cityofsalem.net/eagle-monitoring



Headed on-site?
Let's get prepared!

What to bring with you



Good walking shoes

Monitoring locations are accessible by foot, bike, or any device you use to get around

- Reminder- no motorized vehicles allowed on pathways



Rain jacket



Chair

Picnic tables or benches are available at some monitoring locations, but not all



Binoculars or spotting scope

Not provided through the city

You will need to bring your own



Smart device or paper survey sheets

If using paper forms, don't forget a hard surface to write with and a pen/pencil

Turn in complete forms to Jennifer Mongolo



Location map if unfamiliar with the area

Maps are included in your training packet and are printable online if needed



Water and snack

Two hours is a significant amount of time

Please stay hydrated when in the field

Reminder:

Field Training Session:

- Today, Saturday, February 10th, 2024
- Noon to 2 pm
- Meeting in parking lot #3 at Minto Brown Park



Minto Island

Minto-Brown
Island Park

Minto Island Rd SW

Minto Island Rd SW

Minto Island Rd SW

Minto-Brown
Island Dog Park

Minto Island Rd SW

Minto Island Rd SW
Willamette Slough

Minto-Brown Island
Off-Leash Dog Park

Minto Island Rd SW

River Rd S

River Rd S

River Rd S

River Rd S

Crestview Dr S

Hoyt St S

Fairmount Park
Apartments

Mt Crest Abbey
Mausoleum

Google

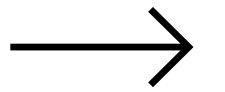
White Oak Construction

Willamette View

Imagery ©2023 Maxar Technologies, State of Oregon U.S. Geological Survey, Map data ©2023 United States, Terms, Privacy

A photograph of a tree with a bird's nest, overlaid with a semi-transparent blue filter. The tree is mostly bare, with a few small buds visible. The nest is located in the upper-middle part of the tree. The text "Questions?" is written in a large, bold, black font across the middle of the image.

Questions?



Contact Info

Info/Questions about the Eagle Watch Program

Amanda Sitter, Volunteer Coordinator

asitter@cityofsalem.net

Office: 503-589-2197

Natural resources questions?

Jeffery Johnson, Natural Resources Planner

jdjohnson@cityofsalem.net

For concerns about something you see happening in the park, contact

Public Works Dispatch

503-588-6063