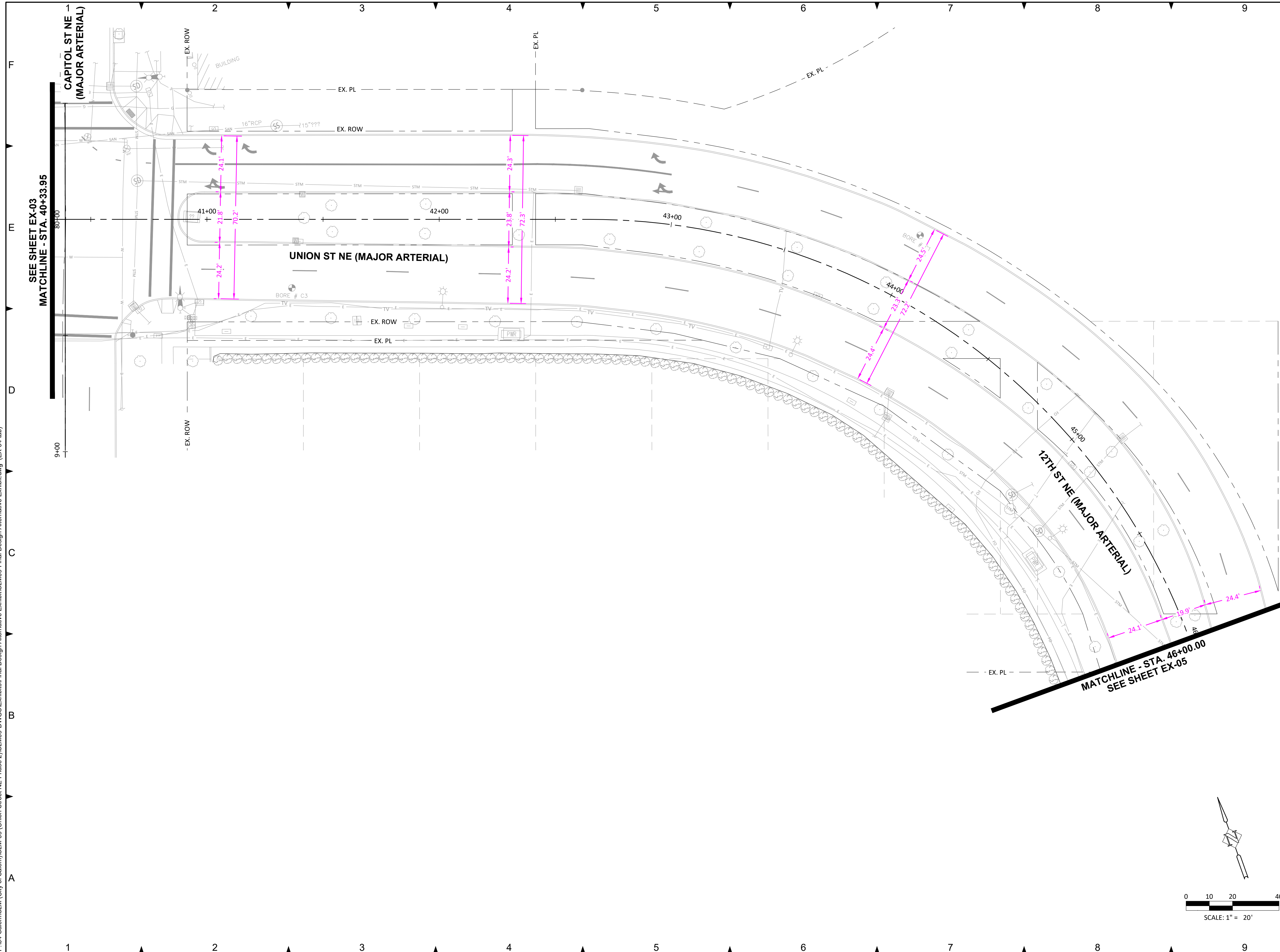


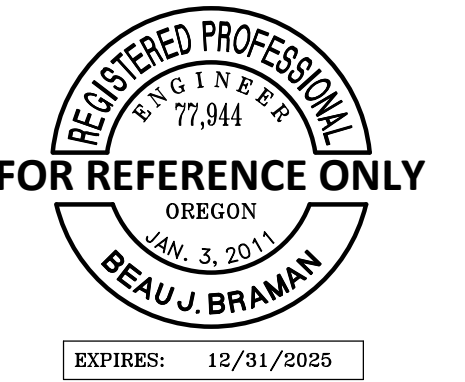
Fully Protected
Multi-use
Path



4/22/2024 11:15:12 AM
 P:\04-Salem\SLM (City of Salem)\SLM-09 (Union Street NE Phase 2)\SLM09-DWGS\Exhibits\Final Design Alternative Exhibit\SLM09-Final Design Alternative Exhibit.dwg (EX-04 tab)



**Harper
 HPR Houf Peterson
 Righellis Inc.**
 ENGINEERS • PLANNERS
 LANDSCAPE ARCHITECTS • SURVEYORS
 530 Center Street NE, Suite 240, Salem, OR 97301
 PHONE: 503.365.1131 www.hpr.com FAX: 503.221.1171



DATE SIGNED:

**UNION STREET NE
 FAMILY FRIENDLY
 BIKEWAY PHASE 2
 (SALEM)**

REVISIONS			
NO.	DESCRIPTION	DATE	BY
1			
2			
3			
4			
5			

PN: 722522

HORIZ DATUM:
 VERT DATUM:
 HORIZ SCALE:
 VERT SCALE:
 DESIGN: BJB
 DRAWN: HPR
 CHECKED:

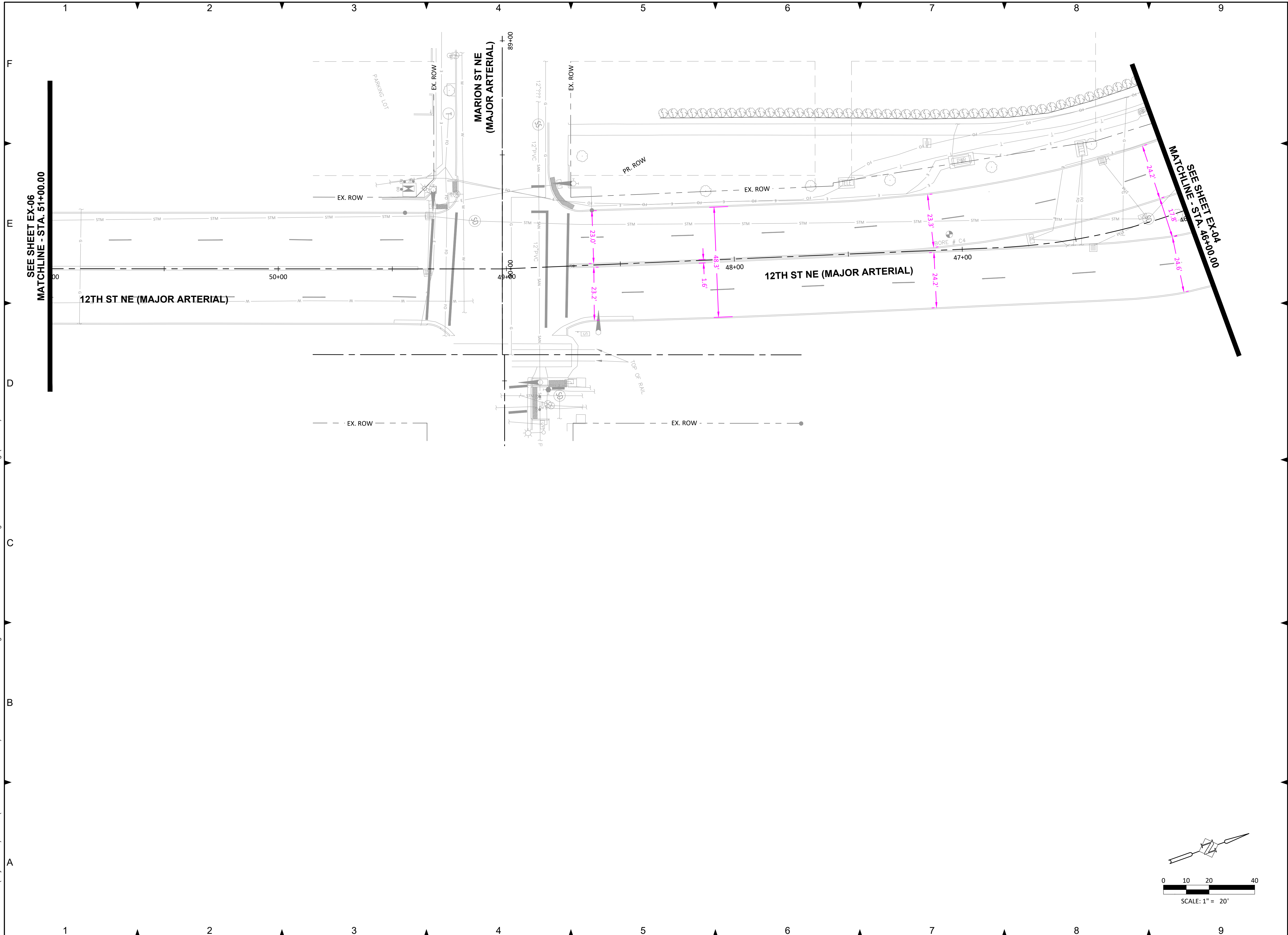
APPROVED:

SHEET TITLE

**DESIGN
 ALTERNATIVES
 EXHIBIT**

EX-04

4/22/2024 11:15:45 AM
 P:\04-Salem\SLM (City of Salem)\SLM-09 (Union Street NE Phase 2)\SLM09-DWGS\Exhibits\Final Design Alternative Exhibits\SLM09-Final Design Alternative Exhibit.dwg (EX-05 tab)



Harper HPR Houf Peterson Righellis Inc.
 ENGINEERS • PLANNERS
 LANDSCAPE ARCHITECTS • SURVEYORS
 530 Center Street NE, Suite 240, Salem, OR 97301
 PHONE: 503.365.1131 www.hpr.com FAX: 503.221.1171



DATE SIGNED:

**UNION STREET NE
 FAMILY FRIENDLY
 BIKEWAY PHASE 2
 (SALEM)**

REVISIONS			
NO.	DESCRIPTION	DATE	BY
1			
2			
3			
4			
5			

PN: 722522

HORIZ DATUM:
 VERT DATUM:
 HORIZ SCALE:
 VERT SCALE:
 DESIGN: BJB
 DRAWN: HHPR
 CHECKED:

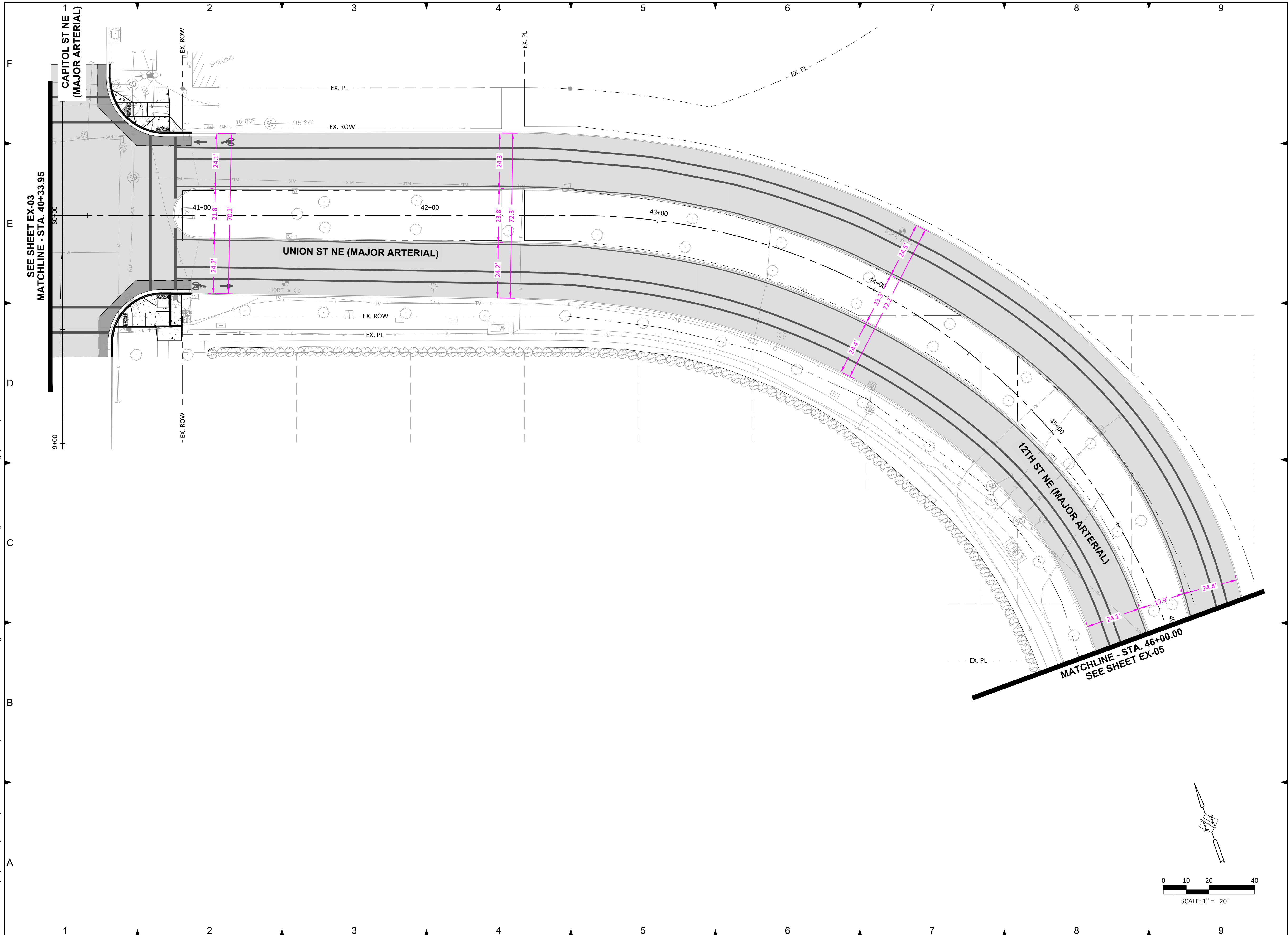
APPROVED:

SHEET TITLE

**DESIGN
 ALTERNATIVES
 EXHIBIT**

EX-05

4/22/2024 10:58:25 AM
 P:\04-Salem\SLM (City of Salem)\SLM-09 (Union Street NE Phase 2)\SLM09-DWGS\Exhibits\Final Design Alternative Exhibits\SLM09-Final Design Alternative Exhibit.dwg (EX-04 tab)



Harper HPR Houf Peterson Righellis Inc.
 ENGINEERS + PLANNERS
 LANDSCAPE ARCHITECTS + SURVEYORS
 530 Center Street NE, Suite 240, Salem, OR 97301
 PHONE: 503.365.1131 www.hpr.com FAX: 503.221.1171



DATE SIGNED:

**UNION STREET NE
 FAMILY FRIENDLY
 BIKEWAY PHASE 2
 (SALEM)**

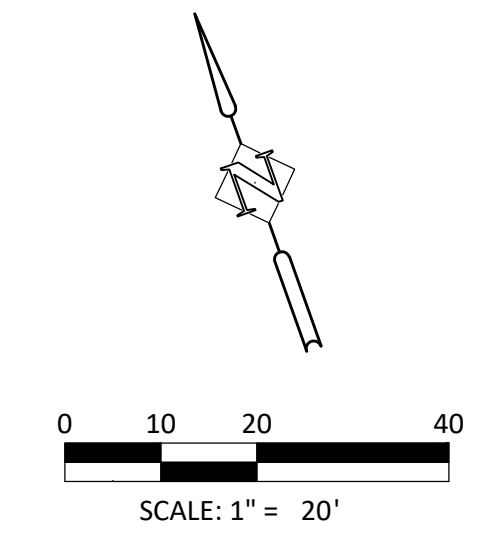
REVISIONS			
NO.	DESCRIPTION	DATE	BY
1			
2			
3			
4			
5			

PN: 722522
 HORIZ DATUM:
 VERT DATUM:
 HORIZ SCALE:
 VERT SCALE:
 DESIGN: BJB
 DRAWN: HPR
 CHECKED:

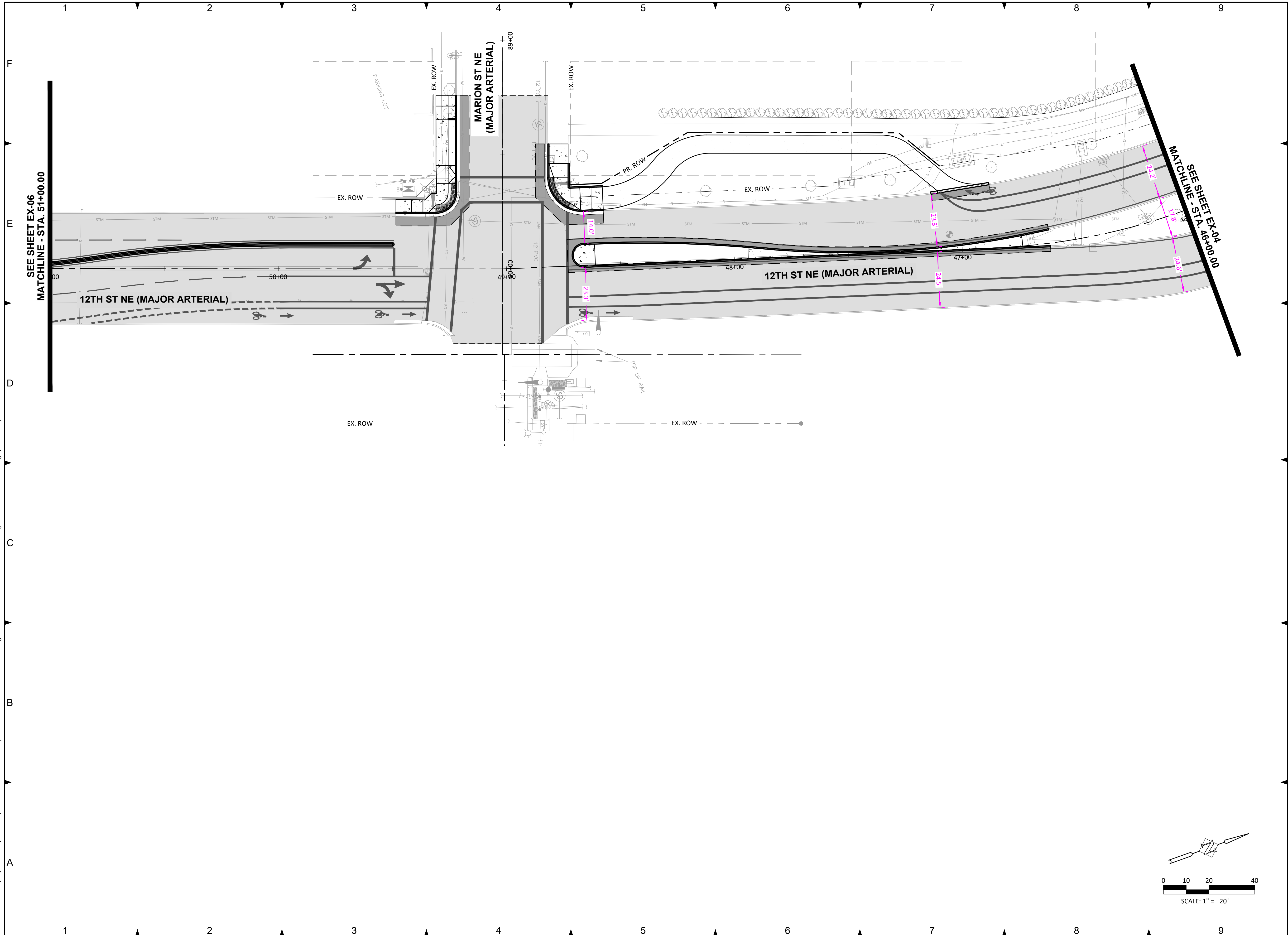
APPROVED:

SHEET TITLE
**DESIGN
 ALTERNATIVES
 EXHIBIT**

EX-04



4/22/2024 11:01:25 AM
 P:\04-Salem\SLM (City of Salem)\SLM-09 (Union Street NE Phase 2)\SLM09-DWGS\Exhibits\Final Design Alternative Exhibits\SLM09-Final Design Alternative Exhibit.dwg (EX-05 tab)



Harper HPR Houf Peterson Righellis Inc.
 ENGINEERS • PLANNERS
 LANDSCAPE ARCHITECTS • SURVEYORS
 530 Center Street NE, Suite 240, Salem, OR 97301
 PHONE: 503.365.1131 www.hpr.com FAX: 503.221.1171



DATE SIGNED:

**UNION STREET NE
 FAMILY FRIENDLY
 BIKEWAY PHASE 2
 (SALEM)**

REVISIONS			
NO.	DESCRIPTION	DATE	BY
1			
2			
3			
4			
5			

PN: 722522

HORIZ DATUM:
 VERT DATUM:
 HORIZ SCALE:
 VERT SCALE:
 DESIGN: BJB
 DRAWN: HPR
 CHECKED:

APPROVED:

SHEET TITLE

**DESIGN
 ALTERNATIVES
 EXHIBIT**

EX-05



COMMERCIAL STREET NE
BIKE LANES (ODOT)
CONSTRUCTION 2025
CONCEPTUAL

UNION STREET
RAILROAD BRIDGE

UNION STREET NE
BUFFERED BIKE LANES
PN: 722522
(URA FUNDED)
CONSTRUCTION 2027
CONCEPTUAL

UNION STREET NE
FAMILY-FRIENDLY
BIKEWAY IMPROVEMENTS
PN: 718509
(FEDERAL & URA FUNDED)
CONSTRUCTED IN 2023

WINTER-MAPLE
NEIGHBORHOOD
GREENWAY

UNION STREET NE
FAMILY-FRIENDLY
BIKEWAY IMPROVEMENTS
PN: 722522
(BOND FUNDED)
CONSTRUCTION 2027
CONCEPTUAL

CAPITOL STREET
BUFFERED BIKEWAY
ANALYSIS

12TH STREET
PROMENADE

UNION STREET NE FAMILY-FRIENDLY BIKEWAY

THANK YOU SALEM

Safety and Livability Bond

CITY OF Salem
AT YOUR SERVICE
Public Works Department
APWA ACCREDITED AGENCY