



City of Salem SALEM PUBLIC ART COMMISSION MEETING

Wednesday, August 14, 2024

3:30 P.M. – 5:30 P.M.

HYBRID PUBLIC MEETING

Zoom Meeting Info Available Upon Request

In-person at Public Works Operations Building

1457 23rd Street SE, Salem, OR 97301

Si necesita ayuda para comprender esta información, por favor llame 503-540-2371

PARTICIPANTS

Board Members

Zach Hull, Chair; Susan Napack, Vice-Chair; Spencer Emerick; Eduardo Diaz-Salazar, Krista Lauer, Brian Hart, Chris D'Arcy

Staff

Keith Bondaug-Winn, City Staff Liaison

AGENDA

1. Welcome and call to order.
2. Public Comment – Appearance of persons wishing to address the Commission on any matter other than those which appear on this agenda.
3. Approval of Consent Agenda – Agenda for August 14, 2024, meeting; Minutes of July 10, 2024, meeting.
4. Discussion Items
 - a. Downtown & West Salem Art Pedestal Project
 - b. Accession of Library Art Collection
 - c. Draft Strategic Positioning Document
 - d. Library Art Kiosk Update
 - e. Subcommittee Reports
 1. Neighborhood Association Chairs Meeting
 2. Social Media Plan Report – Commissioner Lauer
 3. Art Collection Maintenance
 - a. *Black Discs*
 - b. *The Drummer and Rooster*
 - c. Chemeketa Parkade Graffiti
 - d. Completion of Jefferson Street Mural

5. New Business
 - a. Staff Liaison Transfer of Duties
6. Action Items
7. Commissioners Comments
8. Adjourn

Next Meeting: Wednesday, September 11, 2024, at 3:30 PM – 5:30 PM. In-person and Zoom Hybrid meeting.

This meeting is being conducted virtually, with remote attendance by the governing body. No in-person attendance is possible. Interested persons may view the meeting online on [YouTube](#). Please submit written comments on agenda items, or pre-register to provide Public Comment on items not on the agenda, by 5 p.m. or earlier one day prior to the day of the meeting at kbondaug@cityofsalem.net

Special accommodations are available, upon request, for persons with disabilities or those needing sign language interpretation, or languages other than English. To request accommodations or services, please call 503-540-2371 (711 for Relay) at least two business days in advance.

It is the City of Salem's policy to assure that no person shall be discriminated against on the grounds of race, religion, color, sex, marital status, familial status, national origin, age, mental or physical disability, sexual orientation, gender identity, source of income and housing status, as provided by Salem Revised Code 97. The City of Salem also fully complies with Title VI of the Civil Rights Act of 1964, Americans with Disabilities Act of 1990, and related statutes and regulations, in all programs and activities.



Public Works Department

555 Liberty Street SE / Room 325 • Salem OR 97301-3513 • Phone 503-588-6211 • Fax 503-588-6025

City of Salem

Salem Public Art Commission Meeting Minutes

July 10, 2024

3:30 P.M. – 5:30 P.M.

HYBRID IN-PERSON AND ONLINE MEETING

In-person at Public Works Operations Building

1457 23rd Street SE, Salem, OR 97302

Commissioners Present: Zach Hull (Chair), Susan Napack (Vice-Chair), Spencer Emerick, Eduardo Diaz-Salazar, Krista Lauer, Brian Hart, Chris D’Arcy.

Guest Present: Kathy De Rosa (Deacon Development), Sheri Wahrgren (Community Planning and Development Department)

Staff Present: Keith Bondaug-Winn, City Staff Liaison.

1. **Call to Order** – Chair Hull called the meeting to order around 3:30 PM.

2. **Public Comment**

Kathy De Rosa from Deacon Development discussed the preservation and potential relocation of eight marble reliefs created by Frederick Littman. These reliefs represent different Oregon industries and were originally part of a bank building that was demolished in 2016. Deacon Development is in the design phase for new projects on High Street and Liberty Street in downtown Salem and is considering how to incorporate these reliefs into the new buildings. The reliefs, each measuring 6x5 feet and six inches thick, were carved by Frederick Littman, an influential artist and instructor at both the Portland Art Museum and Portland State University. Deacon Development has not yet closed on the property but will own the reliefs once the purchase is finalized. Commissioners expressed interest in the reliefs being integrated into Salem’s public spaces, noting their historical and artistic significance. Suggestions included incorporating them into the design of the new buildings or finding prominent public locations where they could be displayed together. There was a consensus on the importance of keeping the reliefs in Salem to preserve local history and culture. Kathy De Rosa will follow up with the city’s archaeologist and the Public Arts Commission regarding potential locations and plans for the reliefs.

3. **Approval of Consent Agenda**

Transportation and Utility Operations

1410 20th Street SE / Building 2
Salem OR 97302-1209
Phone 503-588-6063
Fax 503-588-6480

Parks Operations

1460 20th Street SE / Building 14
Salem OR 97302-1209
Phone 503-588-6336
Fax 503-588-6305

Willow Lake Water Pollution Control Facility

5915 Windsor Island Road N
Keizer OR 97303-6179
Phone 503-588-6380
Fax 503-588-6387

- a. Approval of the Consent Agenda – Agenda for July 10, 2024; Minutes of June 12, 2024, meeting.

Motion: Brian Hart moved to approve the agenda for July 10, 2024, and the minutes of the June 12, 2024, meeting with the correction of Jack McLarty’s name. The motion was seconded by Spencer Emerick and approved unanimously.

4. Discussion Items

a. **Accession of Library Art Collection**

Both the SPAC and the library foundation approved the transfer of the art collection, and legal support is now required to finalize the documents. The collection includes 44 pieces, with one currently under repair. Proper documentation and maintenance of these pieces are critical to ensure their preservation and accessibility. Commissioners discussed the importance of having detailed records and high-quality images of the collection for both archival and public engagement purposes.

b. **Relocation of *The Drummer and Rooster***

The installation is planned for tomorrow at Center 50+ with a temporary placement until October. The sculptures cannot stay at the Center beyond October due to their programming schedule. Potential permanent locations include the library (outside next to the deer sculpture or near the entrance) or the police station. The need for a maintenance plan and the challenges of finding a suitable long-term location were discussed. Commissioners considered the importance of visibility and accessibility for the public.

c. **SPAC Work Plan**

No additional feedback was received. The work plan outlines SPAC's goals and priorities for the upcoming year, including new projects, maintenance efforts, and community engagement initiatives. Commissioners were encouraged to review and provide any final comments or suggestions to ensure the plan reflects the collective vision of the commission.

d. **Draft Strategic Positioning Document**

The document was delayed due to Commissioner D’Arcy’s travel commitments. The document aims to position SPAC strategically within the community, highlighting its role and impact on public art in Salem. Commissioners are looking forward to reviewing the document and providing feedback to refine the strategy.

e. **Public Art Matrix for Legal**

Mark Weinstein and Keith Bondaug-Winn discussed various legal considerations for public art placements. Temporary halt on approving new parks art projects until legal clarifications are obtained. Issues include the classification of murals and other artworks as signs, and the need to update regulations to support public art. The need to work with various city departments to ensure consistent and supportive policies for public art was emphasized. The goal is to create a clear and comprehensive legal framework that facilitates the creation and preservation of public art.

f. Library Art Kiosk Update

A GIS Story Map was created to update the art inventory, but further work is needed to update images and information, with a focus on high-quality photos and detailed documentation. Opportunities for professional photography or internships to assist with this project were mentioned. The importance of having an accurate and visually appealing online representation of the city's art collection was discussed. Potential collaborations with local photographers or educational institutions to complete this project were considered.

g. Subcommittee Reports:

1. Neighborhood Association Chairs Meeting

The next meeting is in September, with plans to present SPAC accomplishments and future projects. The presentation should include recent achievements, current projects, and plans to engage with neighborhood associations. The aim is to build relationships with neighborhood associations and encourage collaboration on future art projects.

2. Social Media Plan Report – Commissioner Lauer

A new social media campaign focusing on local sculptures has begun, with positive public engagement noted. The campaign encourages the public to explore local art and share their favorite pieces, aiming to increase awareness and appreciation of public art in Salem. The success of recent posts and strategies for maintaining and increasing public engagement were discussed, as well as the importance of highlighting different pieces of public art and telling their stories to the community.

3. Art Collection Maintenance

a. Eco Earth Globe

Fundraising is ongoing, with a plan to have a restoration plan by Earth Day next year. The engineering department is updating cost estimates, and the Parks Foundation is close to their \$400,000 goal but needs to report to the Oregon legislature on updated costs. The need for a coordinated effort to secure additional funding and support for the project was emphasized. Ideas for increasing public awareness and engagement in the restoration effort were discussed.

b. Black Discs

One estimate was received above \$5000, and there is a need for additional estimates and a clear scope of work. The previous estimate from Lee Imonen included sandblasting, welding, and repainting. The commission discussed creating a detailed scope of work based on Lee Imonen's recommendations and soliciting bids from contractors of record. The importance of ensuring the restoration work is thorough and preserves the integrity of the artwork was emphasized.

Motion: Chair Hull moved to create a scope of work based on the plan we received from Lee Imonen, and we submit that same scope of work to our two existing contractors of record to compare pricing. The motion was seconded by Commissioner Chris D'Arcy and approved unanimously.

c. **Utility Box Wraps**

Lots of positive feedback from the community. Installation has been on hold, because the company contracted to do the work has prioritized wrapping the City's new ambulances (EMS vehicles).

5. **New Business**

a. **Downtown Art Pedestal Project**

Sheri Wahrgren presented an update on the budget approval for new sculptures. SPAC is responsible for the RFP process, including defining the scope of work and creating a selection committee for evaluating proposals. Four art pedestals are available in prominent downtown locations, with a budget of \$50,000 allocated for acquiring and installing two new pieces of art. Steps for moving forward include transferring funds to SPAC, defining the scope of work, and creating a selection committee for evaluating proposals. The importance of selecting pieces that enhance the downtown area and engage the community was discussed, along with considerations for incorporating feedback from previous public art projects to improve the selection process.

6. **Action Items**

a. **Graffiti at Chemeketa Parkade Mural**

Contact Blaine Fontana, the original muralist for the Chemeketa Parkade, to discuss the possibility of him repairing the graffiti and request a quote for the work. Additionally, inquire about the cost of applying an anti-graffiti coating to prevent future vandalism. Lastly, converse with Sheri to explore potential funding options for this project, considering its location in the downtown urban renewal area.

7. **Adjournment:** The meeting was adjourned, and attendees were wished a great day and safe travels. Chair Hull adjourned the meeting at 5:00 PM.

TO: Salem Public Arts Commission
FROM: Tory Banford
DATE: July 18, 2024
SUBJECT: **West Salem Urban Renewal Area Funded sculpture design and installation on 2nd Street NW**

Action

On June 5, 2024, the West Salem Redevelopment Advisory Board (WSRAB) allocated \$30,000 of West Salem Urban Renewal tax increment funds for the Salem Public Art Commission (SPAC) to select an artist and sculptural art for the art pedestal constructed on 2nd Street NW based on the following project values and design goals.

Project Values:

- A) Uniqueness – create interest in the location and the broader West Salem district
- B) Sense of place – abstract representation of West Salem history, evolution, and community

Design Goals:

- 1) Culturally and physically enrich the built environment
- 2) Sculptural art that fits an area 6 feet wide 6 feet deep 3 feet tall at the northeast corner of the Patterson Street NW 2nd Street NW corner location indicated that meets City of Salem Public Works art mounting specifications (Attachment A)
- 3) Sculptural art built to City of Salem Public Works standards for safety, security, durability, and vandal resistance
- 4) Encourage social connection, interaction, and promotion
- 5) Creative representation of West Salem
- 6) Visually interesting
- 7) Welcoming

Background

There is ongoing community interest in the expansion of Salem public art. An art pedestal, like the downtown locations, is included in the construction of 2nd Street NW. The next step is to provide information to SPAC so they may proceed with the selection process.

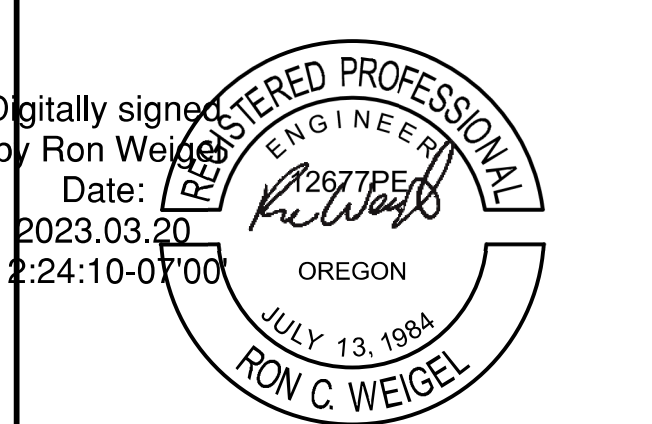
Next Steps

SPAC will proceed with their selection process to contract with an artist to complete the work in a reasonable timeframe and update WSRAB on the status.



SHEET PREPARED BY:
CENTURY WEST
 ENGINEERING

PORTLAND OFFICE
 5500 MEADOWS RD., #250
 LAKE OSWEGO, OR 97035
 503.419.2130 OFFICE
 503.639.2710 FAX



CERTIFICATE EXPIRES:
 DATE SIGNED:

2ND STREET NW IMPROVEMENTS

REVISIONS			
NO.	DESCRIPTION	DATE	BY
1	ADDENDUM #1	3/23	RW
2			
3			
4			
5			

PN: 685030
 HORIZ DATUM: NAD 83-SPCS
 VERT DATUM: NGVD 1929(47)
 HORIZ SCALE: AS SHOWN
 VERT SCALE: AS SHOWN
 DESIGN: RCL
 DRAWN: SLK
 CHECKED: *AWC*
 APPROVED:

SHEET TITLE
2ND STREET NW
PLAN & PROFILE
 STA 14+00 TO 18+00

ST-08
 SHEET 30 OF 143

GENERAL NOTES

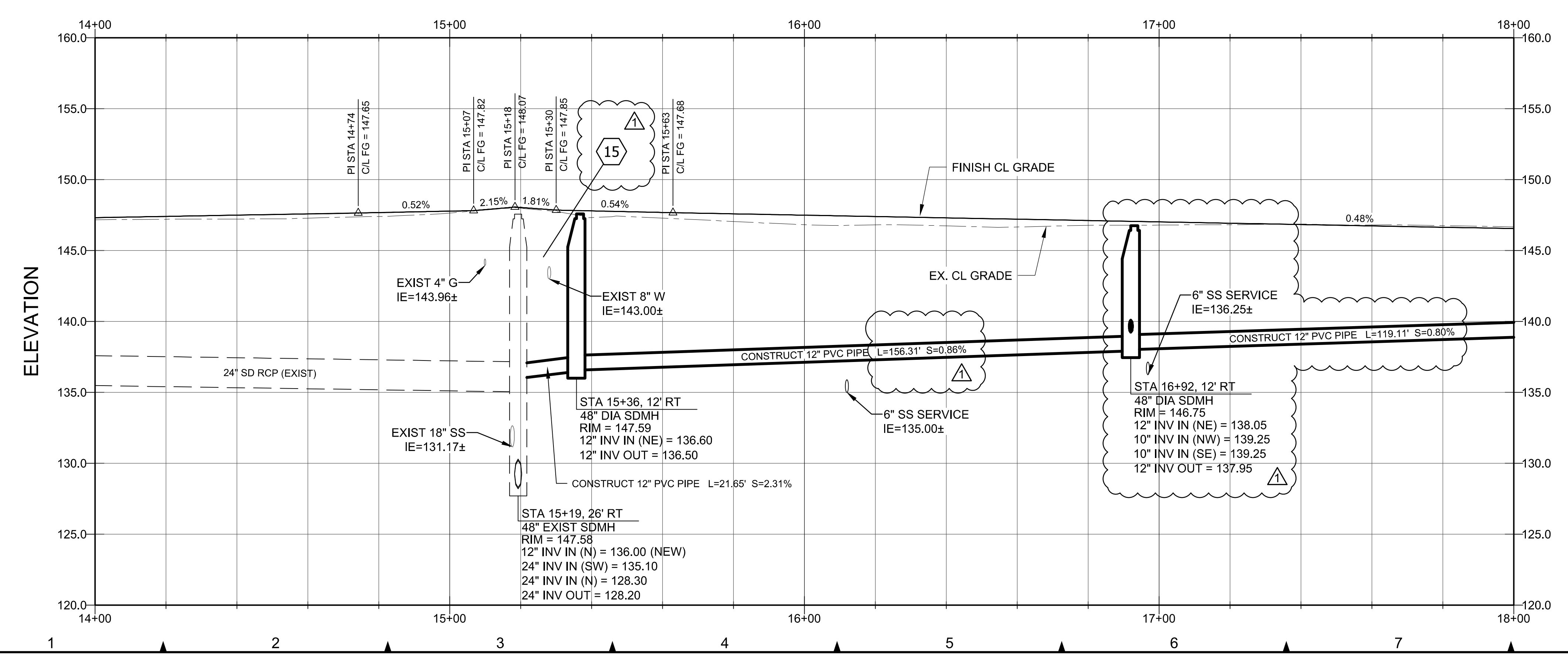
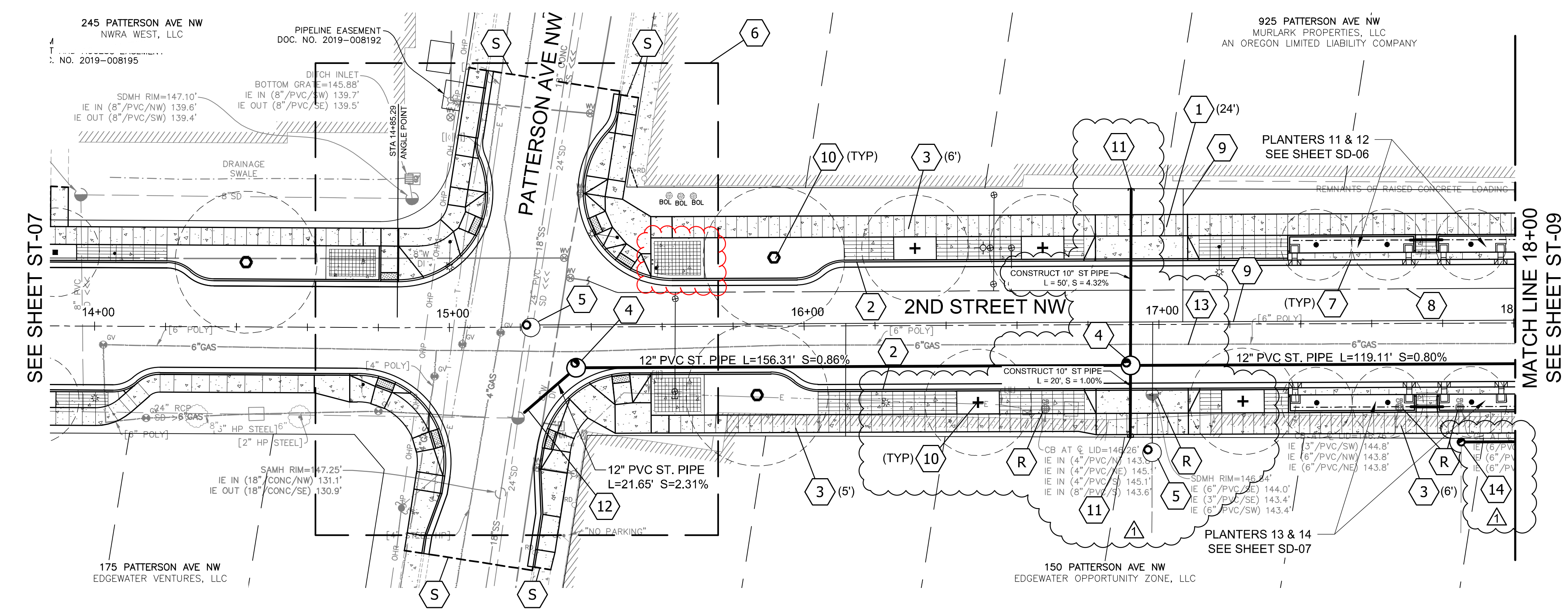
- ALL STORM SEWER PIPE SHALL HAVE CLASS "B" BEDDING WITH COMPACTED 1"-0 CRUSHED AGGREGATE PIPE ZONE AND BACKFILL.
- SEE SHEETS X-01 THROUGH X-04 FOR DETAILED CROSS SECTIONS.
- SEE SHEETS LA-01 THROUGH LA-08 FOR STREETSCAPE PLANS.
- EXISTING TREES NOT SHOWN FOR REMOVAL SHALL BE PROTECTED.
- DRIVEWAY (D) REQUIRES ADDITIONAL GRADING INFORMATION. SEE SHEETS ST-32 THROUGH ST-38.
- SEE SHEET G-06 FOR CENTERLINE DATA.

SHEET NOTES

- CONSTRUCT (X') WIDE P.C.C. DRIVEWAY APPROACH PROPERTY LINE SIDEWALK.
- CONSTRUCT STANDARD P.C.C. TYPE "A" CURB & GUTTER PER TYPICAL SECTION AND STD. PLAN 303.
- CONSTRUCT PROPERTY LINE (X') P.C.C. SIDEWALK PER TYPICAL SECTION AND STD. PLAN 306B.
- CONSTRUCT 48" DIA. STORM SEWER MANHOLE PER STD. PLAN 101.
- CONSTRUCT 48" DIA. SANITARY SEWER MANHOLE PER STD. PLAN 101. SEE SS-01 FOR DETAILS.
- REFER TO SHEET ST-19 AND ST-21 FOR INTERSECTION PLAN.
- CONSTRUCT STANDARD P.C.C. TYPE "B" CURB & GUTTER PER TYPICAL SECTION AND STD. PLAN 303. CURB EXTENDS TO TOTAL WIDTH OF 2' AND UTILIZES FULL 1'-6" DEEP SECTION. EXTEND ALONG FACE OF PLANTERS AND STRIP BETWEEN.
- INSTALL NEW 12" DI WATERLINE. SEE SHEET W-03.
- INSTALL NEW 8" SANITARY SEWER AND 6" SERVICES. SEE SHEET SS-01.
- NEW STREET TREE WITH CANOPY. SEE GENERAL NOTE 3.
- INSTALL WATERTIGHT CAP AT END OF STORM PIPE LATERAL. PROVIDE PRESSURE TREATED 2 x 4 FROM END OF PIPE TO 1' ABOVE GROUND SURFACE.
- CONNECT NEW 12" PVC STORM PIPE TO EXISTING STORM MANHOLE.
- 6" GAS NOT SHOWN IN PROFILE WITH APPROXIMATE 3' COVER. PROTECT DURING EXCAVATION AND BACKFILL.
- INSTALL MODIFIED ROUND CLEANOUT OVER EXISTING 6" PVC FM STORM SHEET SD-07 FOR ADDITIONAL INFORMATION. MAINTAIN ABILITY TO DISCHARGE FLOWS UNTIL ALL NEW PIPES HAVE BEEN APPROVED.
- CONFIRM LOCATION OF EXISTING 6" PRIVATE SANITARY SEWER FM LOCATED BETWEEN MANHOLES. PROTECT DURING EXCAVATION.

RR	CONTRACTOR TO REMOVE/RELOCATE.	AJ	CONTRACTOR TO ADJUST TO FINISH GRADE.
S	CONTRACTOR TO SAWCUT AND MATCH EXISTING FINISH GRADE.	RC	CONTRACTOR TO RECONSTRUCT.
R	CONTRACTOR TO REMOVE.	A1	ABANDON BY OTHERS.
A	CONTRACTOR TO ABANDON.	RR1	REMOVE/RELOCATE BY OTHERS.
P	CONTRACTOR TO PROTECT.	AJ1	ADJUST TO FINISH GRADE AS REQUIRED BY OTHERS.

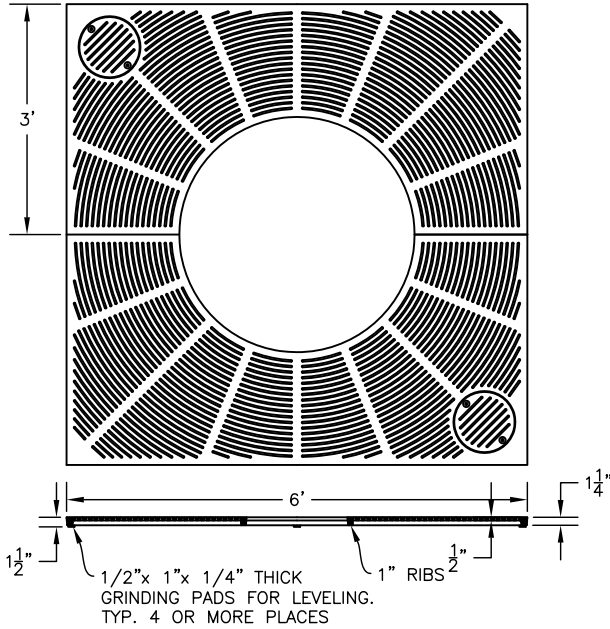
Attachment A



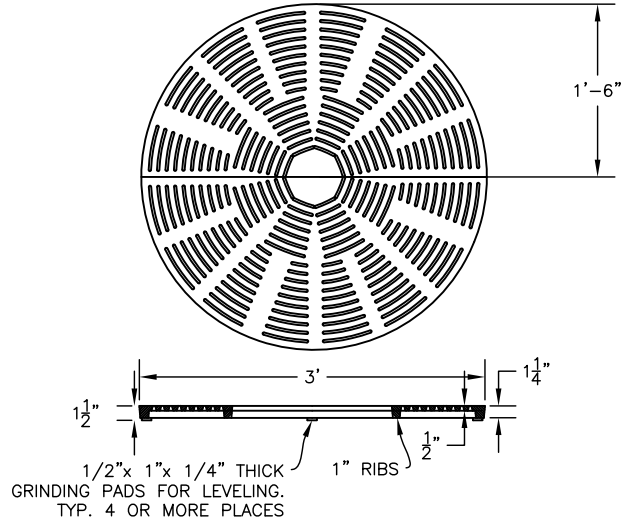
3/20/2023 10:57:00 AM
 Y:\Projects\Salem_City_012nd Street NW\CAD_WORKING\TEMPLATE-STREET_STORM.dwg (NEW ST-08.lab)

GRATE NOTES

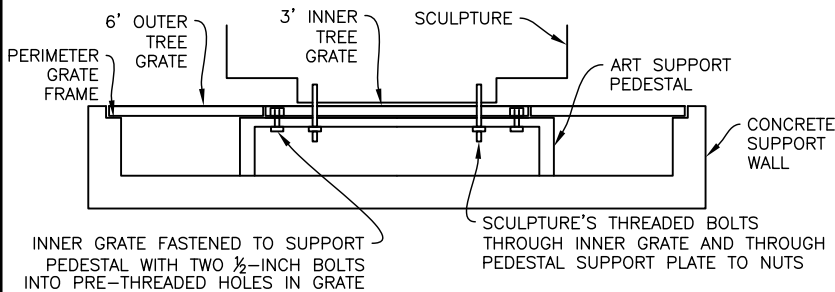
1. OUTER GRATE - IRONSMITH TREE GRATE OLYMPIAN MODEL 7204 - 72" SQUARE, IN TWO SECTIONS, WITH 36.75" CENTER HOLE, and 2 ROUND LIGHTWELLS WITH BOLTED COVERS, UNFINISHED.
2. INNER GRATE - IRONSMITH TREE GRATE OLYMPIAN MODEL 3603 - 36" ROUND, IN TWO SECTIONS, WITH NO CENTER HOLE, UNFINISHED. INNER GRATE THICKNESS MODIFIED TO EQUAL THICKNESS OF OUTER GRATE. INNER GRATE IS BOLTED TO ARTWORK SUPPORT STRUCTURE. SEE STND PLAN 8XY.
3. SLOT WIDTH IS 1/4" MAXIMUM, MEETS ADA COMPLIANCE.
4. GRATE FROM GREY CAST IRON. STEEL ANGLE FRAME REQUIRED. SEE GRATE FRAME DETAILS..
5. OUTER GRATE CENTER HOLE 3/4" LARGER THAN INNER GRATE OUTSIDE DIMENSION.
6. IF USED, 2 CORNER LIGHTS, IRONSMITH MODEL TGL-5DF, WITH SHIELD AND 5 WATT 5000K DAYLIGHT OptILED L.E.D. MR16 40 DEGREE SPREAD LAMPS.
7. IF CORNER LIGHTS USED, NEED IRONSMITH ELECTRONIC TRANSFORMER, MODEL TGL75T , 120V AC 75 VA WITH 11.6 V OUTPUT FOR 12V LAMPS.
8. POWER SOURCE IS PROJECT SPECIFIC. DESIGN AS NECESSARY TO MEET ELECTRICAL CODE AND PROVIDE GFI PROTECTION.



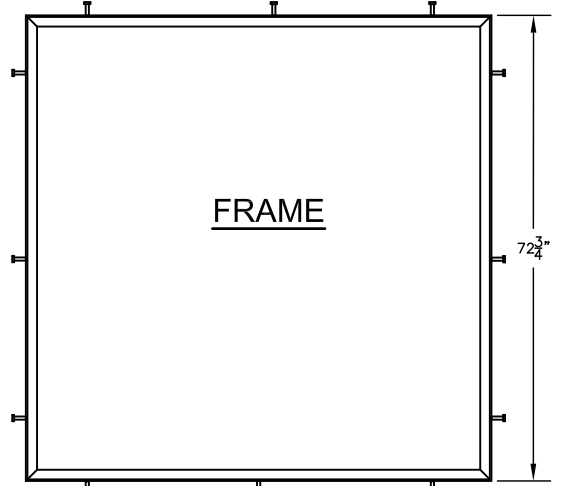
OUTER GRATE



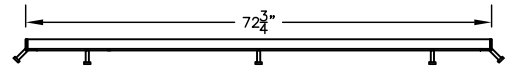
INNER GRATE



FRAME & GRATE DETAILS, N.T.S.



PLAN



SECTION

GRATE FRAME NOTES

1. IRONSMITH TREE GRATE FRAME MODEL 7200F OR APPROVED EQUAL, SQUARE TREE GRATE FRAME WITH STANDARD CONCRETE ANCHORS.
2. FRAME JIG WELDED FROM 1-3/4" x 1-3/4" STEEL ANGLE PER ASTM A36. ANCHORS 1/2" NELSON.
3. ANCHORS MACHINE WELDED TO FRAME. FRAME TO BE HOT DIPPED GALVANIZED.

**CITY OF SALEM
DEPARTMENT OF PUBLIC WORKS**

**STANDARD PLAN
STREETSCAPE ART MOUNTING VAULT
FRAME AND GRATE DETAILS**

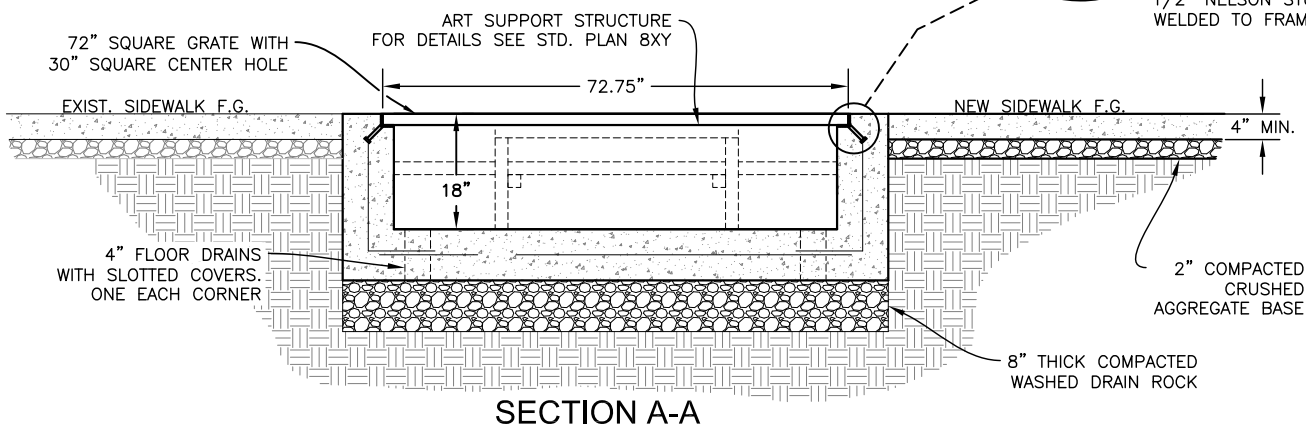
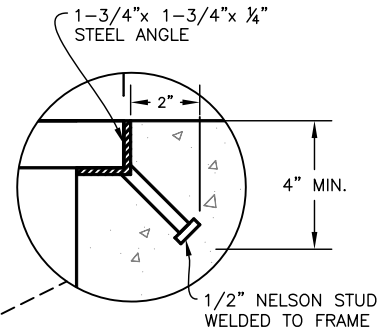
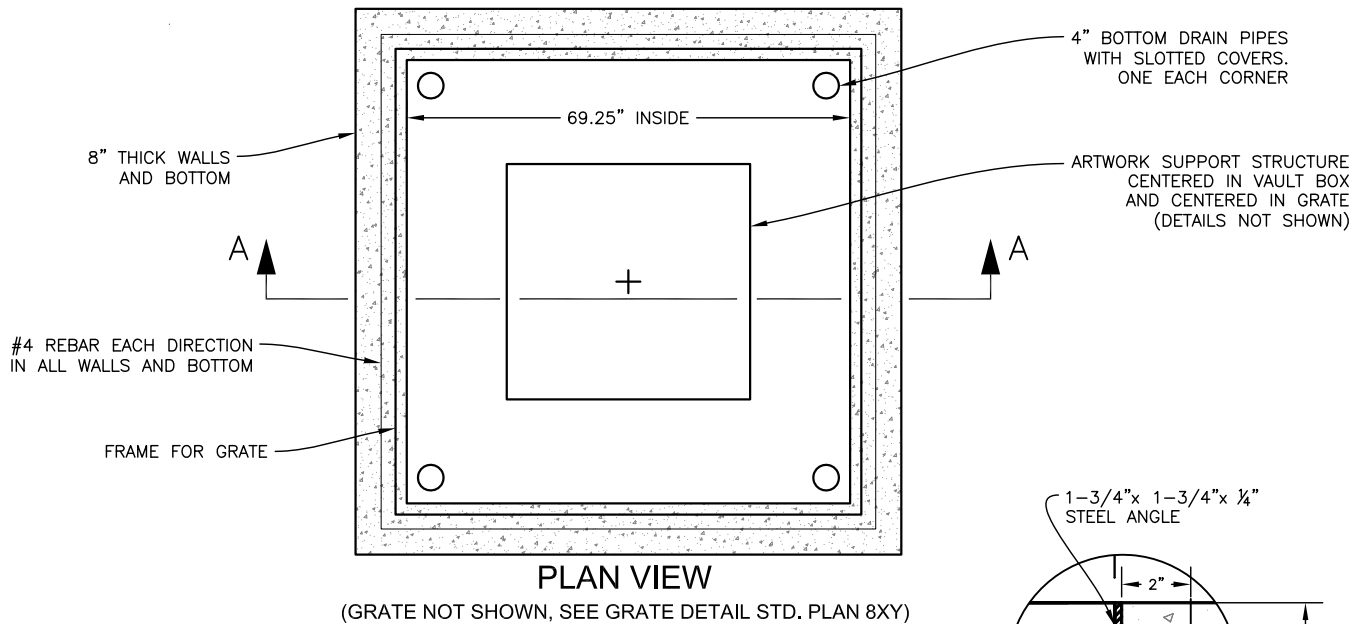
APPROVED		
	CITY ENGINEER	DATE

DRAWN BY	ALT	01/2016
CHECKED BY	RWL	01/2016

NO. 8XY

FOR REVIEW

FOR REVIEW



ART VAULT NOTES

1. PLACEMENT:
 - A. ART VAULTS SHALL BE PLACED IN THE STREETSCAPE STREET FURNISHINGS AREA.
 - B. THE OUTSIDE EDGE OF THE ART VAULT SHALL BE ALIGNED WITH ADJACENT SIDEWALK SCORING PATTERN.
 - C. VAULT LOCATION IS NOT TO BE SUBJECT TO VEHICULAR LOADING.
2. ART VAULTS SHALL BE RECTANGULAR IN SHAPE, 6- FEET BY 6- FEET. DEPTH IS AS SHOWN.
3. ART VAULTS ARE REINFORCED PORTLAND CEMENT CONCRETE STRUCTURES. THE WALLS ARE 8" THICK. CONCRETE SHALL HAVE A 28 DAY 3,000 P.S.I. MIN. COMPRESSIVE STRENGTH.
4. ALL REINFORCING BARS SHALL BE #4 CENTERED IN EACH WALL, AND SPACED AT 9" EACH WAY, EXCEPT AS NOTED. REINFORCING BARS SHALL BE BENT AT CORNERS AND LAP SPLICED AT ALL WALL CORNERS AND WALL TO FLOOR CORNERS REINFORCING STEEL DEFORMED BARS SHALL HAVE A 40,000 P.S.I. GRADE DEFORMED BARS IN ACCORDANCE WITH CURRENT ASTM SPECIFICATIONS. LAP SPLICES TO BE 1'-10" MINIMUM.
5. THE ARTWORK SUPPORT STRUCTURE SHALL BE CENTERED IN THE VAULT BOX AND MATCH THE ROUND HOLE IN THE CENTER OF THE OUTER GRATE. THE ART SUPPORT STRUCTURE WITH CENTER GRATE RING ATTACHED IS SIZED 3/4-INCH SMALLER THAN THE CENTER HOLE IN THE GRATE, SUCH THAT THE 1/2 INCH ADA MAXIMUM GAP SPACING IS NOT EXCEEDED. THIS WILL REQUIRE CLOSE TOLERANCES IN THE VAULT AND ARTWORK SUPPORT STRUCTURE TO MAKE THINGS FIT PROPERLY. THE CONTRACTOR SHALL ADJUST ITEMS AS NECESSARY TO MEET THESE REQUIREMENTS.
6. DRAIN ROCK SHALL BE 1" - 1/2" OPEN GRADED WASHED AGGREGATE WITH 40% VOIDS. DEPTH: 8-INCHES. DRAIN ROCK TO BE COMPACTED.
7. THE FRAME AND GRATE SHALL MATCH THE ELEVATION OF THE ADJOINING SIDEWALK. THE STANDARD SIDEWALK CROSS SLOPE IS 1/4 INCH/FOOT = 2%. IT IS PREFERABLE TO HAVE THE TOP OF THE ART MOUNTING VAULT ON THIS NORMAL SIDEWALK SLOPE, HOWEVER SOME SIDEWALKS EXCEED THE STANDARD CROSS SLOPE; AND IF SO, SOME SIDEWALK ADJACENT TO THE ART MOUNTING VAULT MAY NEED RECONSTRUCTED.
8. THE TOP OF THE ARTWORK SUPPORT STRUCTURE, WITH INNER GRATE INSTALLED, SHALL MATCH THE ELEVATION OF THE ADJOINING GRATE. USE METAL SHIMS TO MATCH, IF NECESSARY. TOLERANCE = +/- 1/4".

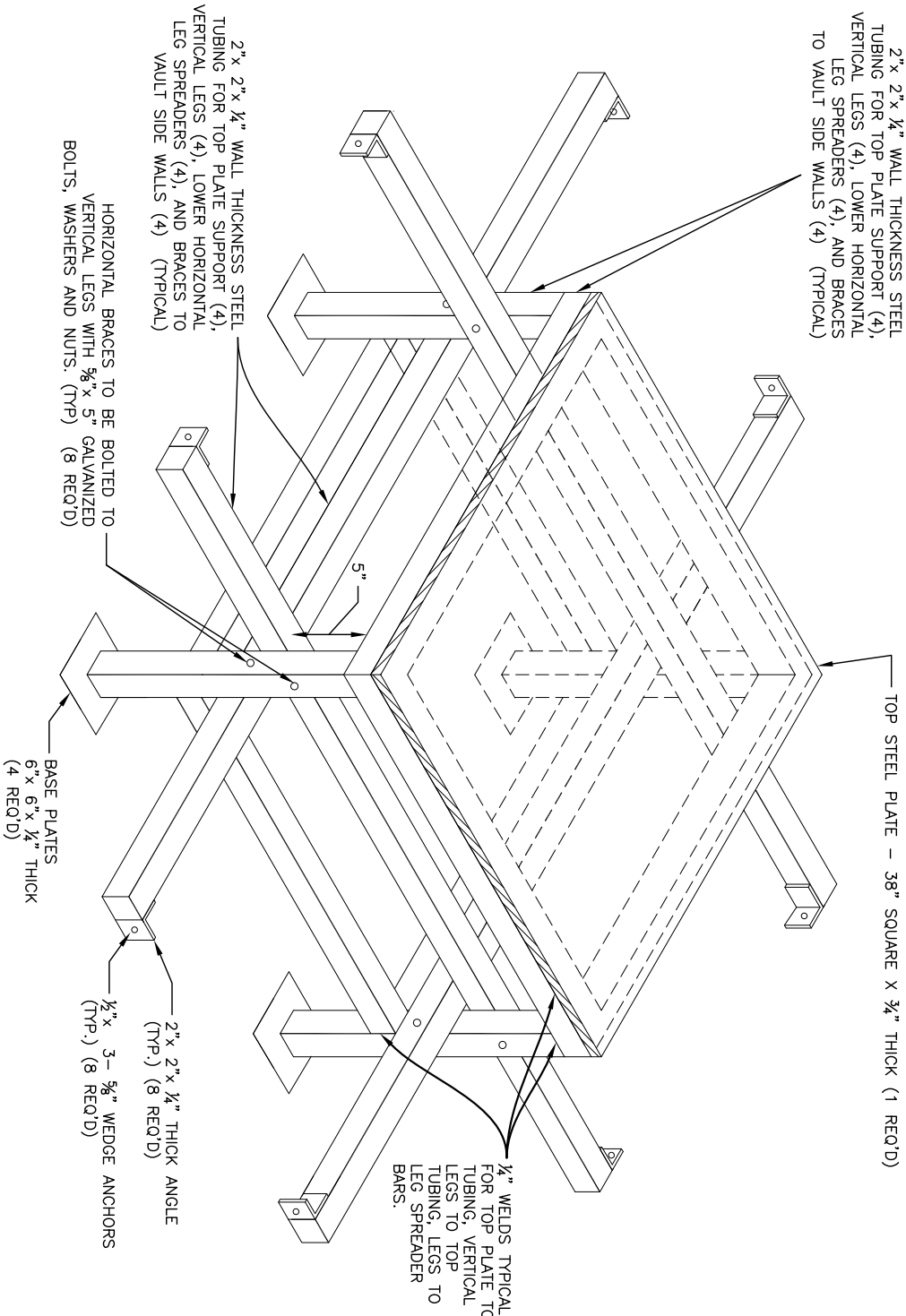
CITY OF SALEM
DEPARTMENT OF PUBLIC WORKS

STANDARD PLAN
STREETSCAPE ART MOUNTING VAULT
PLAN AND SECTION DETAILS

APPROVED			DRAWN BY	ALT	01/2016	NO. 8XX
	CITY ENGINEER	DATE	CHECKED BY	RWL	01/2016	

FOR REVIEW

ART VAULT SUPPORT DETAIL NOTES



1. SEE STANDARD PLAN 8XX FOR ART VAULT DETAILS.
2. ALL SQUARE TUBING JOINTS IN SUPPORT STAND TO BE WELDED. TOP PLATE AND BASE PLATES TO BE WELDED TO SUPPORT STAND ELEMENTS. BRACE END ANGLES TO BE WELDED TO BRACE TUBING. ALL WELDS TO BE 1/4-INCH. (BRACES ARE BOLTED TO SUPPORT STAND AND WALLS.)
3. LENGTH OF SUPPORT STAND BRACES TO MATCH INSIDE DIMENSION OF ART VAULT CONCRETE WALLS, SEE STND PLAN 8XX.
4. ALL BRACES TO BE BOLTED TO SUPPORT STAND AND WEDGE ANCHORED TO THE CONCRETE VAULT STRUCTURE, AS SHOWN.
5. DETAILS TYPICAL ALL FOUR SIDES OF SUPPORT STAND.
6. THE INNER GRATE, SEE STND PLAN 8XX, SHALL BE CARRIAGE BOLTED TO THE TOP PLATE OF SUPPORT STAND. BOLTS TO BE 1/2" DIAMETER, EVENLY SPACED, AND 2" FROM OUTER EDGE OF GRATE.
7. THE OVERALL HEIGHT OF THE SUPPORT STAND, WITH INNER GRATE ATTACHED, IS 18 INCHES FROM TOP OF GRATE TO BOTTOM OF LEG BASE PLATES.
8. THE TOP OF THE ARTWORK SUPPORT STRUCTURE, INCLUDING INNER GRATE, SHALL MATCH THE ELEVATION OF THE ADJOINING GRATE. TOLERANCE = +/- 1/4". USE STEEL SHIMS TO MATCH, IF NECESSARY. ANY METAL SHIMS SHALL BE WELDED TO THE BASE PLATE.
9. ASSEMBLY SUPPORT STAND AND BRACES TO BE HOT DIPPED GALVANIZED PRIOR TO INSTALLATION. ALL BOLTS, NUTS AND WASHERS TO BE GALVANIZED PRIOR TO INSTALLATION.
10. STRUCTURAL DESIGN BASED ON YOUNGMAN LOCKE ENGINEERS, JAN 2014 ANALYSIS TO SUPPORT 3150 LB LOAD FOR CIEN ANOS ART EXHIBIT AT SALEM CONVENTION CENTER. BASED ON STEEL YIELD Fy = 46 ksi, and E: MODULUS 29,000 ksi.

CITY OF SALEM
DEPARTMENT OF PUBLIC WORKS
 STANDARD PLAN
STREETSCAPE ART MOUNTING VAULT
 SUPPORT DETAILS

APPROVED			DRAWN BY	ALT	01/2016	NO.8XZ
			CITY ENGINEER	DATE	CHECKED BY	
					01/2016	

TREE GRATE UP LIGHTS

A low voltage uplight solution specifically designed for Ironsmith Tree Grates

Lamp Holder: Machined 6061-T6 aluminum cap attached to a machined 6061-T6 aluminum body using one 8-18 stainless steel set screw, and sealed with a high temperature silicone o-ring. Cap and body are black anodized. An 1/8" thick, tempered, clear lens is secured to cap with a high temperature, UV curing, silicone adhesive. Lamp holder is supplied with 6' of 16-2 cable. Cable exit sealed with a water tight strain relief fitting.

Aiming: Lamp holder is attached to 304 stainless steel bracketry, allowing 29° vertical aiming.

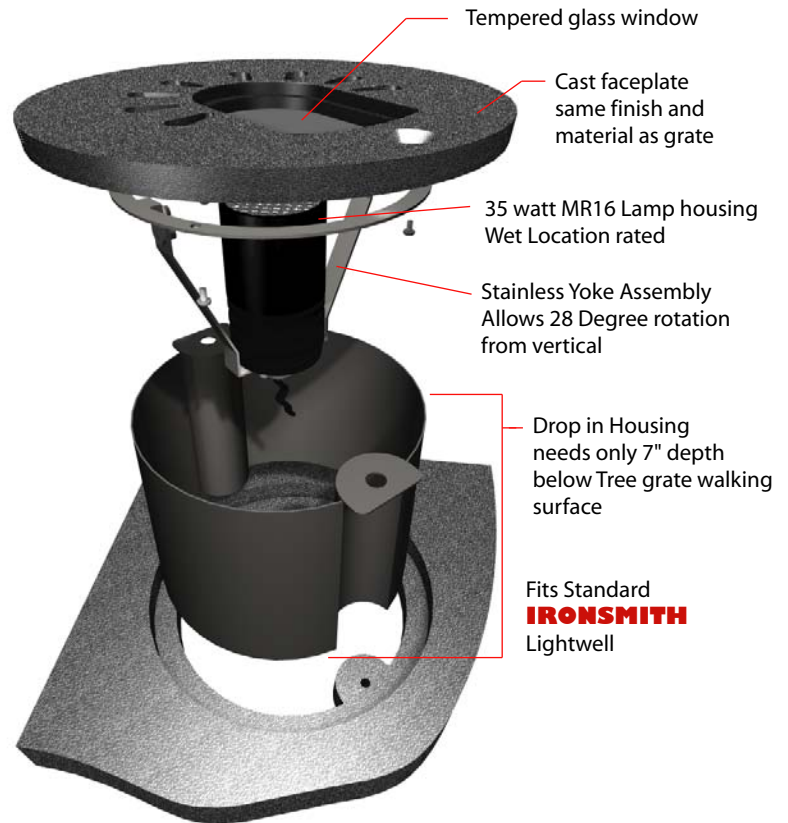
Cover Plate: mounts to aiming bracket with 8-18 stainless steel hardware, ensuring that lens opening is properly aligned. 1/4" thick, tempered, clear lens, secured to cover plate with a high temperature, UV curing, silicone adhesive. Cover is supplied with tree grate and is the same material and finish as tree grate.

Socket: GY-6.35 porcelain socket with 600V, 250°C, PTFE coated 18 ga leads
Lamp: Bi-pin MR16 up to 35 watts

Certification: CSA tested & certified for 35W Max MR16 lamp to US and Canadian safety standards for wet location landscape use per UL1838, CSA TILB-58B, CAN/CSA C22.2 No.9.*

Connect : To any remote 12 volt transformer system.

*** Not for use underwater or in fountains**

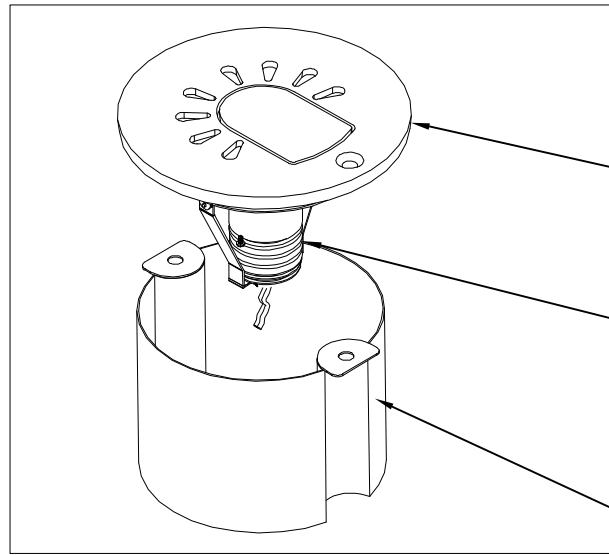


Fits : All Ironsmith Tree grates with 9 1/2" round or square lightwells. (currently does not fit: Grates under 48"; Del Sol or Conquistador pattern grates)

Catalog Id	Lamp Type	Lamp Voltage	Beam Spread
TGL-20F	20 Watt MR16 Halogen	12 volt	40 degree flood
TGL-20S	20 Watt MR16 Halogen	12 volt	12 degree spot
TGL-35F	35 Watt MR16 Halogen	12 volt	40 degree flood
TGL-35S	35 Watt MR16 Halogen	12 volt	12 degree spot

Cover design will vary depending on tree grate selected

TGL Series
Low Voltage Tree grate
Up Light



Cover screws to
tree grate

Lightwell Cover
with Glass Lens

Bracket screws to
underside of cover

Lamp Housing

Aiming bracket
Adjust angle
as desired

Outer Shield

Drops into Lightwell Opening

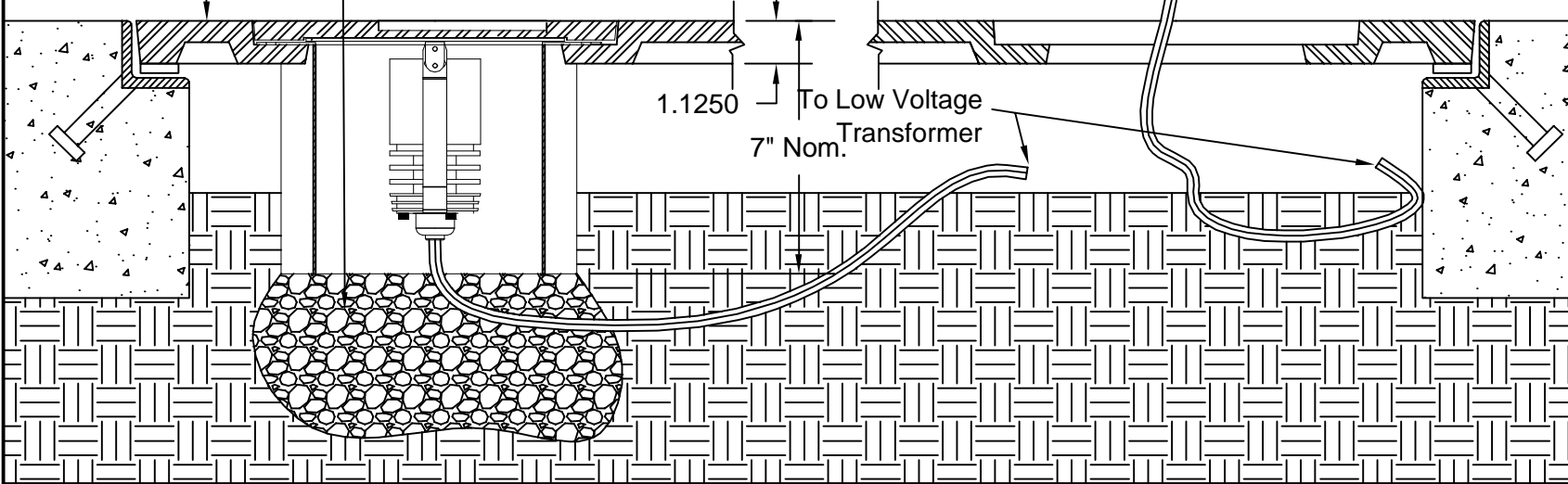
Power cord

Leave enough slack
in cord to allow removal
of fixture for relamping

1.1250
To Low Voltage
Transformer
7" Nom.

Gravel to promote drainage
in poor draining soils

Tree Grate



Cover is shipped
installed in tree grate

Lamp Assembly with
housing bracket and
shield are shipped
separately.

Use 12 volt 35Watt
Max MR16 lamp.
(supplied with lamp of
choice)

Outer shield must be
used to keep earth
away from Lamp
Housing and prevent
overheating.

If Shield is to be
partially burried place
a bed of gravel at the
shield base sufficient to
keep the light well clear
of standing water and
to help minimize
intrusion of dirt.

Connect fixtures to
appropriate 12 volt
transformer of your
choice. (Not Supplied)

This drawing embodies a confidential proprietary design of IRONSMITH, IN. Palm Desert, Ca. All design, manufacturing, reproduction, use, sale, and other rights regarding the same are expressly reserved. This drawing is submitted under confidential relationship for a specific purpose and the recipient agrees by accepting this drawing not to supply or disclose any information regarding it to any unauthorized person or to incorporate any special feature peculiar to this design in other projects. The information in this drawing may be covered completely or in part by patents pending.

IRONSMITH
41-701 Corporate Way #3
Palm Desert, CA 92260
(800) 338-4766
(760) 776-5080 Fax

INSTRUCTIONS PERTAINING TO RISK OF FIRE, OR INJURY TO PERSONS

WARNING! To reduce the risk of FIRE OR INJURY TO PERSONS

1. Do not touch luminaire while lamp is on. Turn off/unplug and allow to cool before replacing lamp.
2. Lamp gets HOT quickly! Contact only switch/plug when turning on.
3. Do not touch hot lens, faceplate, body, or cap.
4. Keep lamp away from materials that may burn.
5. Do not touch lamp at any time. Use a soft cloth. Oil from your skin may damage lamp.
6. Do not operate the luminaire with damaged or missing parts.
7. Do not disassemble lamp housing beyond cap removal to facilitate lamp replacement
8. Remove any debris accumulated on the faceplate, in the housing, or in the body fins when necessary.
9. Do not install luminaire within 10 feet of a pool, spa, or fountain.
10. Have fixture installed in accordance with all applicable installation codes and standards by a person familiar with the construction and operation of the fixture and the hazards involved.
11. Use only cable rated for low voltage. Cable buried more than 6" must be suitable for direct burial.
12. Use only lamps rated for this fixture. 12 volt 35 watt maximum MR16

SAVE THESE INSTRUCTIONS

INSTALLATION

1. If preinstalled, remove light well cover from tree grate.
2. With tree grate installed, excavate under light opening to the depth of the Shield (About 7" below grade) enough to allow shield to drop fully into grate.
3. In poor draining soils, excavate an additional 3" below bottom of shield and fill space to bottom of shield with gravel for drainage.
4. Attach lamp housing and Yoke Assembly to the Cover Plate with the three screws provided
5. feed Supply Cable through Shield.
6. Drop Shield into tree grate opening insuring it seats fully on lip.
7. Connect Supply Cable to 16-2 Cable on fixture. Allow enough cable length to permit complete removal of Assembly from Light well for re-lamping.
Ensure power being supplied is appropriate to fixture.
8. Insert Cover Plate with Lamp Assembly into Light well and secure with screw.

AIMING OF FIXTURE

1. Caution! Fixture will be hot if lamp is on.
2. Remove Cover plate screw and lift assembly out of tree grate.
3. Loosen Vertical Aiming Screws
4. Adjust Yoke as desired
5. Tighten Screws
6. Replace Assembly in Light well opening.

RE-LAMPING

1. Remove power from fixture and let cool before touching.
2. Remove Cover Plate with attached assembly from tree grate.
3. Separate Yoke Assembly from Cover Plate by removing three screws.
4. Loosen Set Screw on lamp housing. Do NOT remove set screw!
5. Remove Lamp Housing Top by slowly twisting and pulling to reduce risk of damage to O-Ring.
6. Pull lamp straight out. Caution! Lamp may still be hot! Be sure lamp has cooled before touching.
7. Push new lamp straight in. Be sure pins are properly aligned. Be sure correct Lamp wattage is used. See inside lamp housing for Lamp ratings.
8. Install Lamp Housing Top by slowly twisting and pushing. Due to tight O-Ring seal you will notice resistance as air pressure builds up.
9. Seat Top fully and tighten set screw until it just bottoms out. Do NOT over tighten set screw! Distortion of the housing can allow moisture in causing fixture failure.
10. Remount Yoke to Cover and Reinstall in tree grate.

