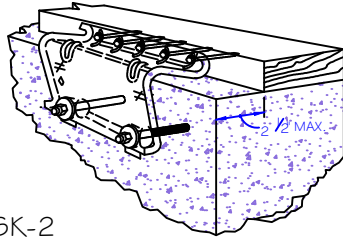
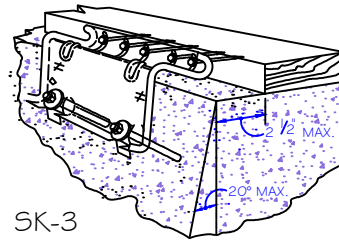


SK-1
SIMPSON STRONG-TIE
UFP 10 ON A
STRAIGHT FOUNDATION WITH
OFFSET SILL PLATE



SK-2
SIMPSON STRONG TIE
UFP 10 ON A
STRAIGHT FOUNDATION



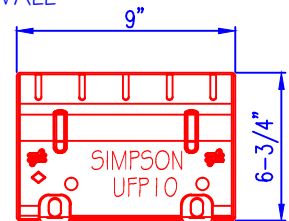
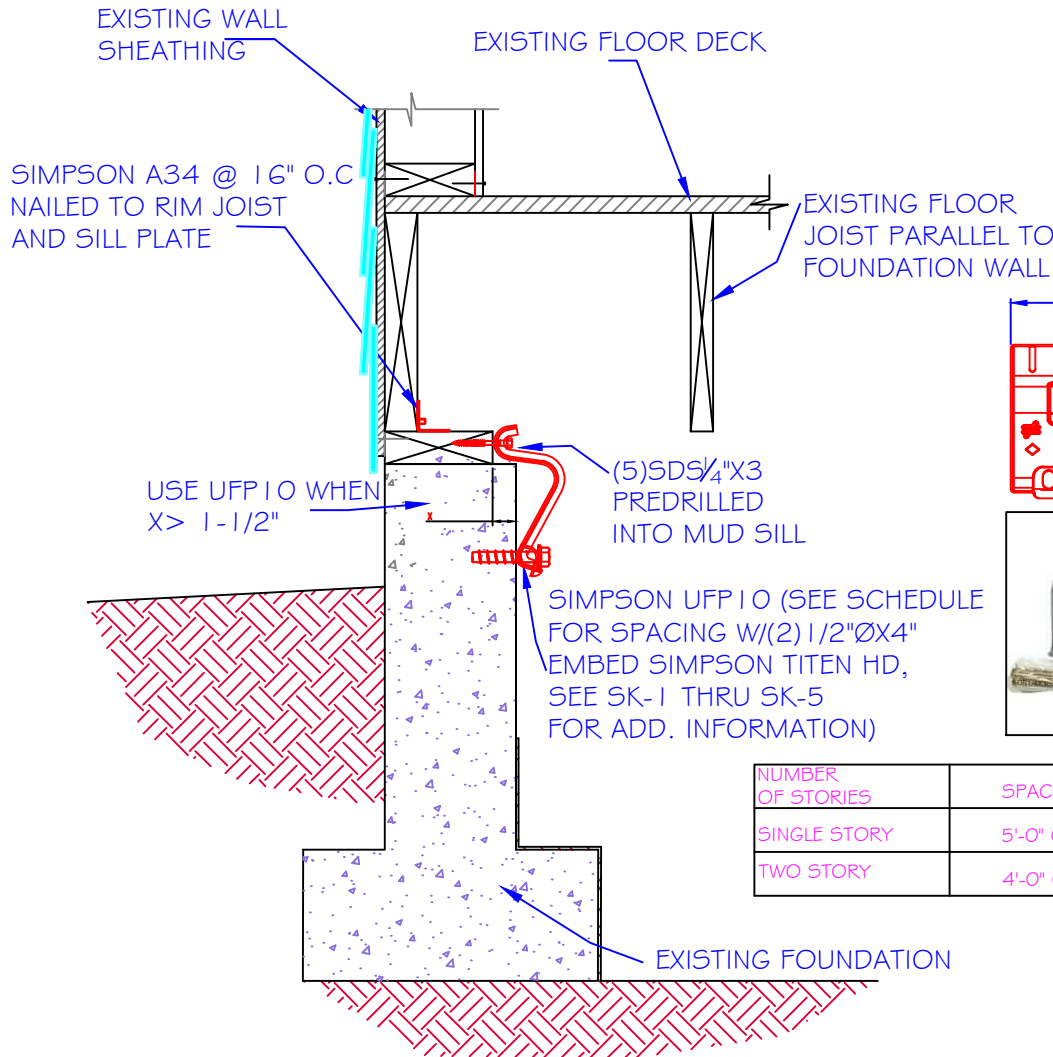
SK-3
SIMPSON STRONG TIE
UFP 10 ON A
TRAPEZOID FOUNDATION



SK-4(SDS SCREW)



SK-5
TITEN SCREW



NUMBER OF STORIES	SPACING
SINGLE STORY	5'-0" ON CENTER
TWO STORY	4'-0" ON CENTER

**SILL PLATE TO FOUNDATION CONNECTION W/UFP 10
FLOOR FRAMING PARALLEL TO STEM WALL**

CITY OF *Salem*
AT YOUR SERVICE
555 LIBERTY STREET SE ROOM 320
SALEM OREGON 97301-3513
TEL: (503) 588-6256

CITY OF SALEM
COMMUNITY DEVELOPMENT DEPARTMENT
BUILDING AND SAFETY DIVISION

STANDARD DETAIL

SILL PLATE/MUDSILL TO FOUNDATION
CONNECTION WITH SIMPSON STRONG
TIE UFP 10 FOUNDATION ANCHOR PLATE
- UFP 10 FOUNDATION ANCHOR PLATE

Revised:	Number
Project No.:	3
Date:	
Scale:	