

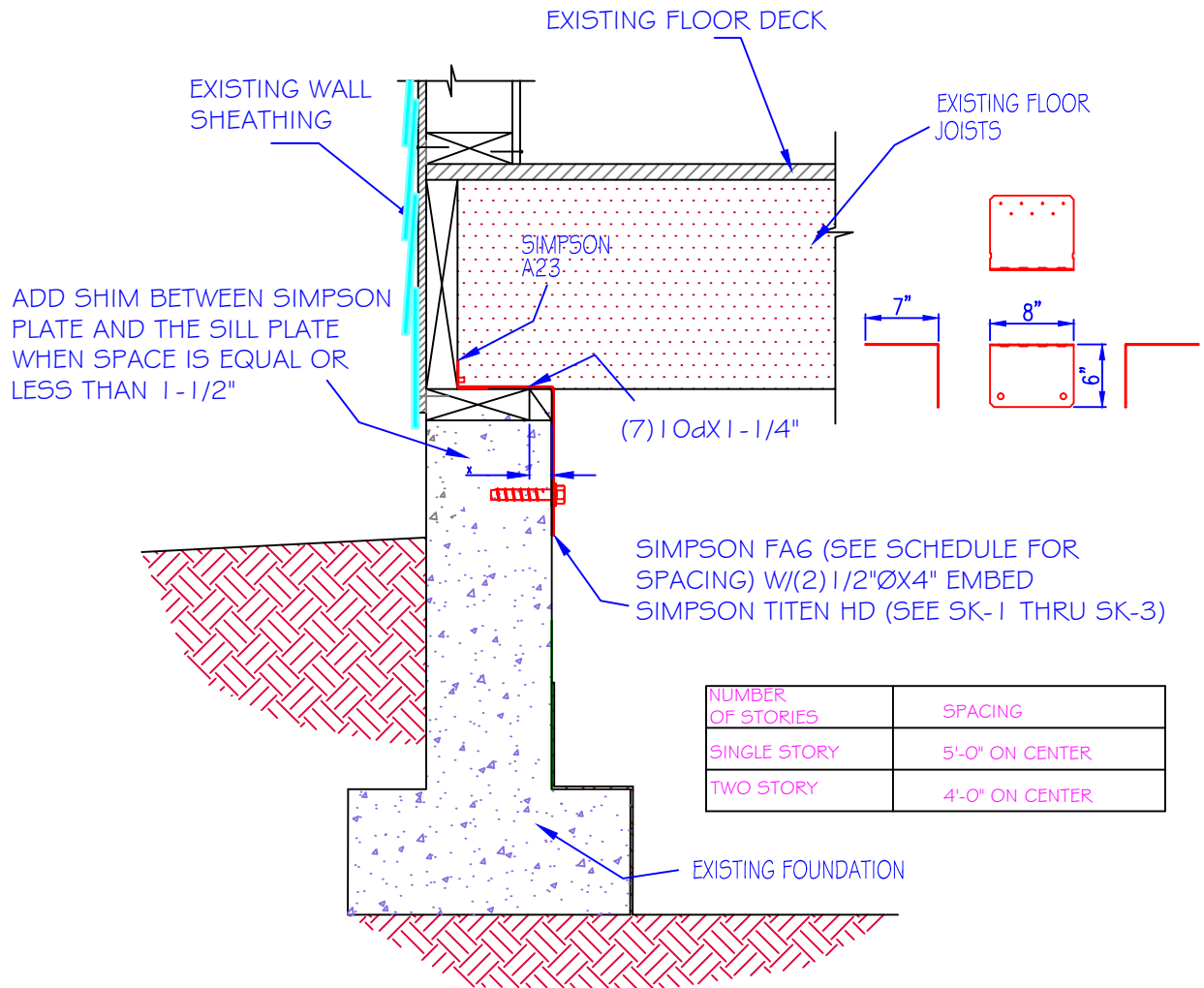
SK-1 (FA PLATE)



SK-2 (TITEN SCREW)



SK-3 (NAIL)



NUMBER OF STORIES	SPACING
SINGLE STORY	5'-0" ON CENTER
TWO STORY	4'-0" ON CENTER

**SILL PLATE TO FOUNDATION CONNECTION W/FAG
FLOOR FRAMING PERPENDICULAR TO STEM WALL**

CITY OF *Salem*
AT YOUR SERVICE
CITY OF SALEM
COMMUNITY DEVELOPMENT DEPARTMENT
BUILDING AND SAFETY DIVISION
555 LIBERTY STREET SE ROOM 320
SALEM OREGON 97301-3513
TEL: (503) 568-6256

STANDARD DETAIL
SILL PLATE/MUDSILL TO FOUNDATION
CONNECTION WITH SIMPSON STRONG
TIE FJA FOUNDATION ANCHOR PLATE
- FA FOUNDATION ANCHOR PLATE

Revised:	Number
Project No.:	7
Date:	
Scale:	