

FOR CITY COUNCIL MEETING OF: February 8, 2016
AGENDA ITEM NO.: 3.2(a)

TO: MAYOR AND CITY COUNCIL
THROUGH: STEVE POWERS, CITY MANAGER
FROM: GLENN W. GROSS, DIRECTOR
COMMUNITY DEVELOPMENT DEPARTMENT
SUBJECT: SALEM HOUSING NEEDS ANALYSIS ACCEPTANCE AND WORK PLAN

ISSUE:

Should the City Council adopt Resolution No. 2016-05 to accept the Salem Housing Needs Analysis and direct staff to implement the Salem Housing Needs Analysis Work Plan?

RECOMMENDATION:

Adopt Resolution No. 2016-05 to accept the Salem Housing Needs Analysis and direct staff to implement the Salem Housing Needs Analysis Work Plan.

SUMMARY AND BACKGROUND:

This report sets forth staff's work plan to advance recommendations of the Salem Housing Needs Analysis (HNA) to address the deficit of multifamily land in Salem's portion of the Urban Growth Boundary (UGB). The City of Salem completed the HNA in December 2014, and City Council directed staff to prepare a work plan at its October 12, 2015, work session. Staff plans to refer to the findings and recommendations of the HNA when addressing the deficit of multifamily land if the HNA is accepted by the City Council.

The HNA found that based on the 20-year projected population forecast, there is a 207-acre deficit of land designated for multifamily housing (2,897 units) in Salem's portion of the UGB, a map of which is included as **Attachment 1**. Under state law, the City cannot adopt the HNA without also addressing this deficit. Staff plans to do this through a work plan with three phases as described below. The first two phases will advance code amendments recommended in the HNA. The purpose of the code amendments – which can be found on pages 16 and 17 of **Attachment 2** – is to encourage the private market to develop multifamily housing. This may reduce the amount of land that may need to be redesignated and rezoned for multifamily housing in the third phase of this HNA work plan.

- **Phase 1 – Expand Housing Choices:** Advance code amendments that expand housing choices in Salem. This will include allowing accessory dwelling units in Salem, which staff plans to pursue as the first code amendment in this work plan.
- **Phase 2 - Encourage Multifamily Development:** Advance code amendments that encourage multifamily development. This will include revising the existing design review process, revising existing Planned Unit Development (PUD) regulations, and identifying tools to increase redevelopment.
- **Phase 3 - Redesignation of Land:** Redesignate and rezone land for multifamily housing in Salem, as needed. Once the code amendments are implemented, staff will assess their impact in terms of the amount of new multifamily housing that is developed. If a deficit of multifamily land remains, the third phase of this HNA work plan will be City-initiated redesignations and rezoning of land.

The three phases will be conducted consecutively as illustrated in the table below. The first two phases will take approximately two and a half to three years to complete. The third phase will take approximately two years. For each phase of work, staff will convene a stakeholder committee that will provide input. Staff will also conduct public outreach throughout the three phases to engage the broader community.

Once the City addresses the deficit of land designated for multifamily housing, it can adopt the HNA, which will strengthen the City's ability to respond to the City of Keizer's Housing Needs Analysis and Economic Opportunities Analysis. Those two studies found that the City of Keizer needs approximately 385 additional acres of land to meet its projected 20-year housing and employment needs. Based on Salem's HNA and adopted Economic Opportunities Analysis, there is enough land within Salem's portion of the UGB – with potential Comprehensive Plan and zone changes – to accommodate Salem's housing and employment needs over the next 20 years, with more than 2,000 remaining acres of surplus land to accommodate Keizer's projected land needs.

Salem's HNA is available online at:

<http://www.cityofsalem.net/Departments/CommunityDevelopment/Planning/salem-eoahna/Documents/Final%20HNA.pdf>

FACTS AND FINDINGS:

Project Overview

On June 24, 2013, the City Council adopted Resolution No. 2013-51, appropriating funds for the City to undertake a Salem HNA and Economic Opportunities Analysis (EOA). The City issued a Request for Proposals in August, 2013, and selected a project consultant, ECONorthwest, on October 22, 2013. The project kicked off in January, 2014, and the HNA was completed in December, 2014.

The purpose of the HNA was to develop strategies to provide enough land to meet Salem's housing needs over the next 20 years and to inform policy decisions related to residential land. The HNA, in conjunction with the EOA, validated that the existing urban

growth boundary does not need to be expanded to meet Salem's land needs. The HNA also found that Salem's portion of the UGB has a 1,975-acre surplus of land for single-family housing (9,131 units) and a 207-acre deficit of land designated for multifamily housing (2,897 units).

The City Council held a work session on the HNA on October 12, 2015, and directed staff to prepare a work plan to advance the recommendations in the HNA to address the identified deficit of land designated for multifamily housing.

HNA Work Plan

The HNA work plan consists of three phases, as described below. The first two phases will advance code amendments recommended in the HNA. Code amendments that are similar to each other have been grouped together, with the first phase consisting of code amendments that expand housing choices in residential zones and the second phase consisting of those that encourage multifamily development. The purpose of the code amendments is to encourage the private market to develop multifamily housing in Salem's portion of the UGB. This will reduce the amount of land that may need to be redesignated and rezoned for multifamily housing in the third phase.

The three phases will be conducted consecutively. The first two phases will take approximately two and a half to three years to complete. Once the code amendments are implemented, staff will assess their impact in terms of the amount of new multifamily housing that is developed and will work with the Oregon Department of Land Conservation and Development (DLCD) to determine what deficit of multifamily land, if any, remains. If there is an outstanding deficit, staff will begin the third phase of this HNA work plan, which may take approximately two years to complete depending on the size of deficit.

For each phase of work, staff will convene a stakeholder committee that will provide input. The committees, for example, will help develop and examine the different options for each code amendment. The committees are expected include neighborhood association representatives, developers, property owners, real estate professionals, and others. Staff will also conduct additional public outreach throughout the three phases to engage the broader community. The public outreach effort will include multiple tools to connect with interested parties. Staff will bring the code amendments to City Council for adoption.

The following table summarizes the HNA work plan. Additional details are included after the table.

Phase	Code Amendments	Estimated Time to Complete
Phase 1 – Expand Housing Choices		
	1. Allow accessory dwelling units 2. Allow more multifamily housing types in single-family zones	18 - 21 months
Phase 2 – Encourage Multifamily Development		
	3. Revise design review process 4. Revise Planned Unit Development regulations 5. Identify tools to increase redevelopment	12 - 15 months
Phase 3 – Redesignation of Land		
	6. Redesignate land for multifamily housing	18 - 24 months
Total		48 - 60 months (4 - 5 years)

Phase 1 – Expand Housing Choices

Description: This phase will advance code amendments that expand housing choices in Salem. Staff will address the code amendments consecutively.

- 1. Allow Accessory Dwelling Units:** The HNA recommends allowing accessory dwelling units in appropriate zones in Salem. Staff will work on this code amendment first because it has been identified as a priority in the community. Both the Morningside and NEN/SESNA neighborhood plans – which were adopted by City Council – recommend revising City codes to allow accessory dwelling units. In addition, staff continues to get requests from the public to allow such units in Salem.
- 2. Allow More Multifamily Housing Types in Single-Family Zones:** Staff will explore if there are situations where it can be compatible to allow lower-density multifamily development – such as duplexes, triplexes and townhouses – in single-family zones. Staff will also explore if there are circumstances under which incentives such as parking reductions could be appropriate for this type of development. Allowing more multifamily housing types in single-family zones could increase the amount of land available for multifamily development without having to redesignate or rezone land.

Timeline: 18 - 21 months

Outreach: Staff will convene a stakeholder committee to provide input throughout phase 1 of this work plan. The same committee will work on both code amendments in this phase because both related to existing residential neighborhoods in Salem. The

committee will include residents of single-family neighborhoods, neighborhood association representatives, property owners, and others.

Phase 2 - Encourage Multifamily Development

Description: This phase will advance code amendments that encourage multifamily development by establishing new incentives and removing existing barriers to development. Staff will implement the code amendments consecutively.

3. **Revise Design Review Process:** The HNA recommends revising the design review process to lower barriers to multifamily housing development. Specifically, staff will explore creating a menu of design standard options for multifamily housing – one menu for tri-plex and four-plex units, and another for multifamily developments with five to 10 units. With each menu, developers could choose a minimum number of design standards. An administrative (staff) approval process could be possible.
4. **Revise Planned Unit Development Regulations:** Staff will explore potential revisions to the existing PUD regulations. The HNA recommends allowing more flexibility in the PUD development standards and review process and decreasing the complexity of the process. Policy issues related to PUD regulations are also included in Planning Salem, which is the former Unified Development Code (UDC) "Bucket List."
5. **Identify Tools to Increase Redevelopment:** The HNA recommends identifying and evaluating tools to increase redevelopment activity in Salem. This could include code amendments as well as financial incentives. Staff will seek assistance from the Urban Development Department to identify potential tools.

Timeline: 12-15 months

Outreach: Staff will convene a stakeholder committee to provide input throughout phase 2 of this work plan. The committee will include developers, real estate professionals, residents, neighborhood association representatives, and others as the code amendments in this phase largely involve revisions to Salem's existing development regulations.

Phase 3 - Redesignation of Land

Description: This phase will involve redesigning and rezoning of land for multifamily housing in Salem. Before starting this phase of work, staff will evaluate the impact of the code amendments implemented in phases 1 and 2 of this work plan to determine what deficit of multifamily land, if any, remains. Staff already tracks applications to rezone and redesignate land for multifamily development, and this work will continue. Staff will also work to identify property owners who are willing to redesignate and rezone their land for multifamily housing before exploring any City-initiated redesignations.

- 6. Redesignate Land for Multifamily Housing:** The HNA recommends identifying opportunities to redesignate land from the Single Family Designation (SF) to the Multi-Family Designation (MF). The process will result in City-initiated Comprehensive Plan Map amendments and zone changes. As part of this process, staff will consider downzoning land that is zoned multifamily but developed with single-family housing as directed by City Council at its October 12 work session.

Timeline: 18-24 months


Outreach: Staff will convene a committee of broad range of stakeholders to provide input. The committee will include residents, neighborhood association representatives, developers, real estate professionals, property owners, City officials, and others.

Additional Tasks

As part of this follow-up work to the HNA, staff will advance Planning Salem by considering the policy issues related to residential development that were identified during the UDC process. This includes policy issues related to PUDs, residential infill, and design standards for multifamily housing. Staff may also identify additional ways to address the need for multifamily land as part of the HNA work plan. This could include researching other potential code amendments and reviewing recommendations in adopted neighborhood plans. Any additional code amendments would be incorporated into and advanced in the first two phases of this HNA work plan.

When the deficit of multifamily land in Salem's portion of the UGB has been addressed, staff plans to bring the HNA to City Council for adoption. This will include updating the goals and policies related to housing in the Comprehensive Plan as recommended in the HNA.

Once the HNA is adopted, staff will explore the HNA recommendation to create different development standards for existing homes in older neighborhoods. While this was a recommendation in the HNA, its implementation would not address Salem's deficit of multifamily land. It can therefore be addressed after the HNA is adopted.



Lisa Anderson-Ogilvie, AICP
Planning Administrator

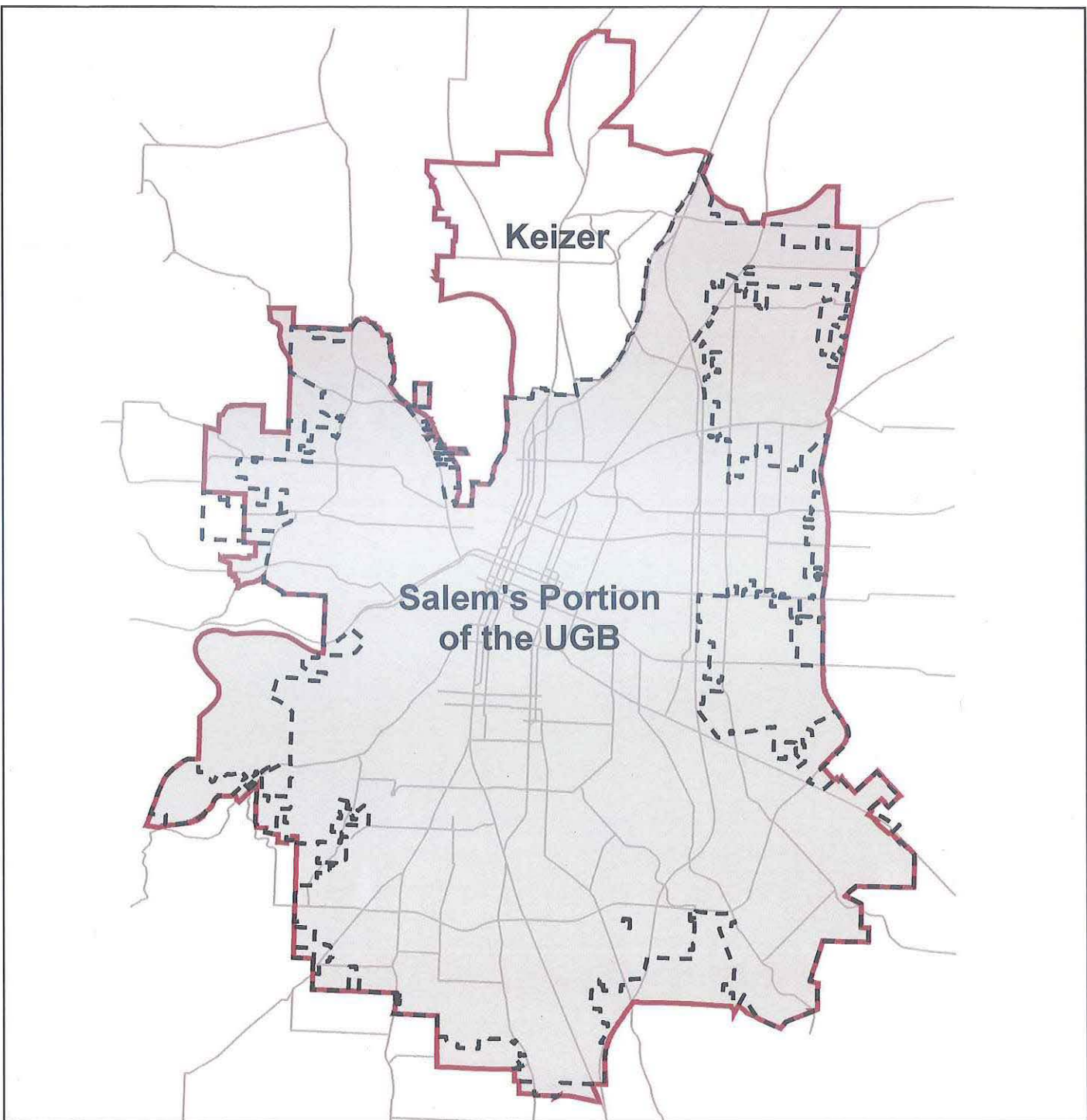
Attachment 1: Map of Salem's Portion of the Urban Growth Boundary
Attachment 2: Salem Housing Needs Analysis and Economic Opportunities Analysis
Summary Report

Wards All
February 1, 2016

G:\CD\PLANNING\LRP\2013 HNA EOA\HNA Implementation\Draft HNA work plan revised.docx

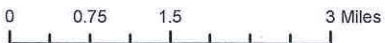
Salem's Portion of the Urban Growth Boundary

ATTACHMENT 1



Legend

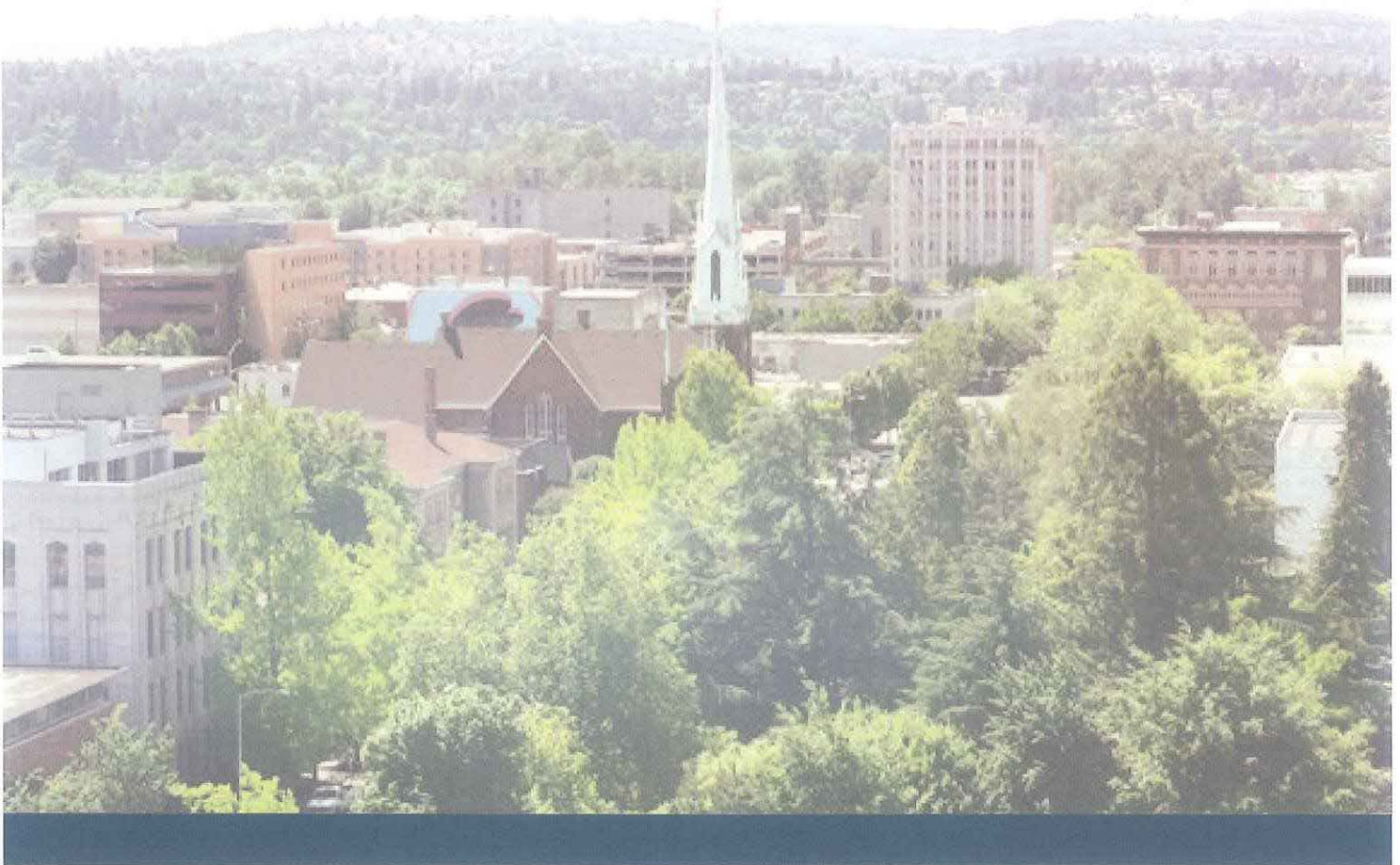
-  Salem's Portion of the UGB
-  Urban Growth Boundary
-  Salem City Limits



This product is provided as is, without warranty. In no event is the City of Salem liable for damages from the use of this product. This product is subject to license and copyright limitations and further distribution or resale is prohibited.

January 2015

ATTACHMENT 2

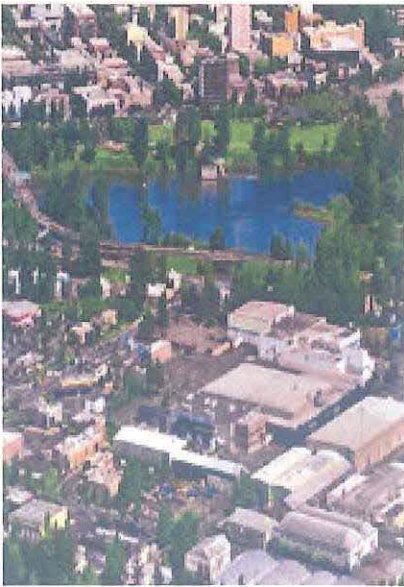


Salem Housing Needs Analysis and Economic Opportunities Analysis

Summary Report

Summary of Findings

Salem is Oregon's capital city and the regional economic center of the Mid-Willamette Valley. This report is a key part of the City's planning efforts to accommodate population and employment growth over the 2015 to 2035 period. Key findings about Salem's residential land needs are:



- **Salem provides opportunities for development of housing affordable to all income levels in Salem.** The range of housing types in Salem includes single-family detached, duplexes, townhouses, condominiums, manufactured housing, and apartments.
- **Salem has a surplus of land for single-family housing and a deficit of land for multifamily housing.** Salem's residential (about 1,975 acres) land base has capacity for about 9,000 more single-family houses than will be needed over the 20-year period and a deficit of land for about 2,900 multifamily units (about 207 acres).
- **Salem will need to address the deficit of multifamily land to comply with Statewide Planning Goal 10.** The City can meet the need for multifamily land in many different ways, such as: allowing a wider-range of housing in single-family zones (e.g., townhouses or tri-plexes), encouraging more mixed-use development, encouraging redevelopment of underutilized lands, and redesignating or rezoning land to allow multifamily housing. The City may choose to work with one or more advisory committees to develop and refine policies to address the deficit.

Key findings about Salem's land for employment uses are:

- **Salem's vision for economic development is growth of employment with higher-than-average wages.** Salem's broad economic development goal is to attract and retain jobs to increase the economic prosperity for Salem residents and businesses by helping to expand and grow existing businesses and by diversifying traded-sector businesses in Salem to support existing companies.
- **Salem has a deficit of 271 acres of land for commercial uses.** The City will can address this deficit through establishing neighborhood retail nodes in or near residential areas, encouraging redevelopment of underutilized commercial areas, and targeting conversion of other lands to commercial uses.
- **Salem's industrial land base is unique within the Willamette Valley.** Salem has about 900 acres of high value industrial land, in areas such as the Mill Creek Corporate Center. This study recommends that Salem manage its high value industrial land base to ensure future opportunities for high wage employment growth and to protect against conversion of high value industrial land to other uses.

The City is planning to meet the deficits of land for multi-family housing and commercial employment growth within the existing urban growth boundary (UGB).

Housing Needs Analysis: Introduction

The Housing Needs Analysis provides the City of Salem (“the City”) with a factual basis to support future planning efforts related to housing and options for addressing unmet housing needs in Salem. It provides the City with information about the housing market in Salem and describes the factors that will affect housing demand in Salem in the future, such as changing demographic patterns.

In addition, the Housing Needs Analysis is intended to comply with Statewide Planning Goal 10, which governs planning for housing and residential development. Goal 10 requires the City to plan for housing that meets identified needs for housing within an urban growth boundary, at particular price ranges and rent levels. In short, Salem must plan for a range of housing types at a range of price levels.

Salem’s Housing Needs Analysis focuses on planning for the housing needed to accommodate population growth between 2015 and 2035. The analysis considers a wide range of factors that will affect Salem’s housing market over the 20-year period, including: historical residential development trends, demographic changes (both historical and forecasts of future changes), and changes in housing costs and affordability.

The results of the Housing Needs Analysis are an estimate of needed housing in Salem for the next 20 years, organized by type of housing and by Comprehensive Plan Designation. These results were the basis for reviewing Salem’s housing policy, focusing on the City’s Comprehensive Plan housing policies and zoning policies.

City staff and ECONorthwest staff worked with an Advisory Committee to review the results of the Housing Needs Analysis. The Advisory Committee provided ideas and input into changes in Salem’s housing policies to address housing deficits, most notably in land needed for new single-family attached and multi-family housing.

PRODUCTS OF THE HOUSING NEEDS ANALYSIS



The primary purpose of the Housing Needs Analysis is to help decision makers develop policies to guide residential development over the next twenty years.

The project Advisory Committee was composed of a range of stakeholders in Salem, including neighborhood association representatives, developers, real estate agents, affordable housing providers, employers, Salem Planning Commissioners, and City Councilors.

Salem's Population and Households

Population and household characteristics help us understand Salem and the people who live here. Characteristics such as population growth, age of residents, and household size and composition provide useful information about how the characteristics of Salem's population and households compare to Marion County, Polk County, and Oregon.

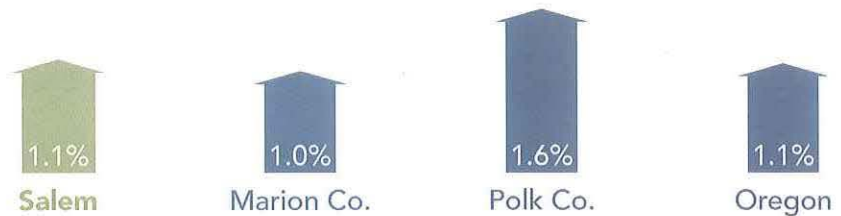
Unless otherwise noted, all data in this document are from the 2010 Decennial Census or 2012 American Community Survey from the U.S. Census.

Salem's population is growing.

Between 2000 and 2013, Salem grew at about the same rate as Marion County and Oregon. Salem added more than 20,000 residents between 2000 and 2013.

AVERAGE POPULATION GROWTH PER YEAR, 2000-2013

Source: Portland State University, Population Research Center



POPULATION, 2013

Source: Portland State University, Population Research Center



Salem's population is young.

Salem has a relatively young population and a large share (29%) of young, working-age residents.

MEDIAN AGE, 2010



Salem's population is growing older.

By 2035, nearly a quarter of residents of Marion and Polk counties will be 60 or older.

PERCENT OF POPULATION AGED 60 AND OLDER, MARION AND POLK COUNTIES, 2000 & 2035

Source for 2035 projections: Oregon Office of Economic Analysis



SALEM'S POPULATION AND HOUSEHOLDS

AVERAGE NUMBER OF PEOPLE PER HOUSEHOLD, 2010

2.6
Salem

2.7
Marion Co.

2.6
Polk Co.

2.5
Oregon

PERCENT OF HOUSEHOLDS THAT ARE SINGLE-PERSON, 2010



Salem



Marion Co.



Polk Co.



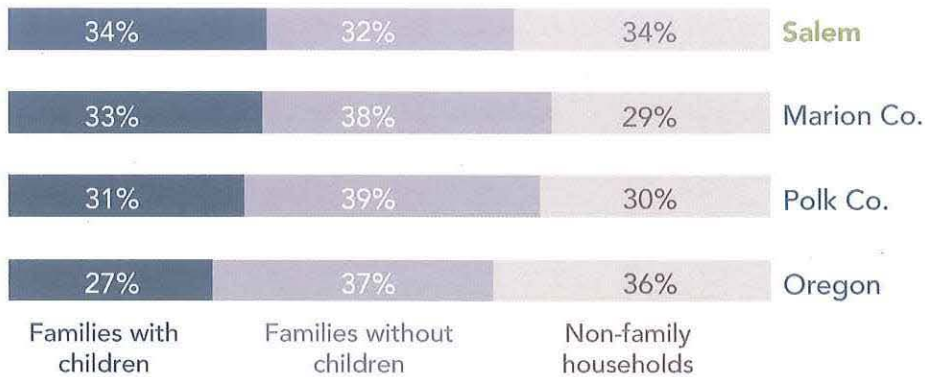
Oregon

Salem has a large share of single-person households.

HOUSEHOLD COMPOSITION, 2012

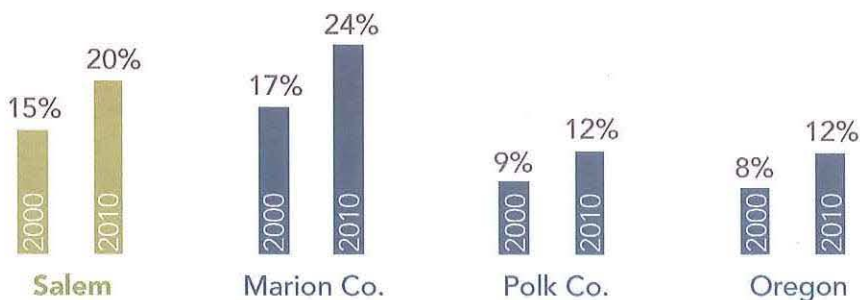
A family household is one in which the householder is related to at least one other person in the household by birth, marriage, or adoption. Non-family households include people living alone, unmarried couples, and unrelated housemates.

Salem has more families with children and more non-family households than Marion or Polk Counties.



PERCENT OF POPULATION THAT IS HISPANIC OR LATINO, 2000 &

Salem's Hispanic or Latino population is growing.



Salem's Housing Market

Analysis of historical development trends in Salem provides insights into how the local housing market functions in the context of the Mid-Willamette Valley region. This report groups housing into the three types shown below.

HOUSING TYPES USED IN THIS PROJECT



Single-family detached
(includes mobile and
manufactured homes)



Single-family attached
(townhouses)



Multi-family
(condos, apartments,
duplexes)

Salem's housing market is primarily single-family detached housing.

More than two-thirds of Salem's housing stock is single-family detached housing. Even so, Salem has a wider range of housing types than Marion or Polk counties.

MIX OF EXISTING HOUSING TYPES, 2012



Salem has a lower share of owners than Marion County, Polk County, or the state.

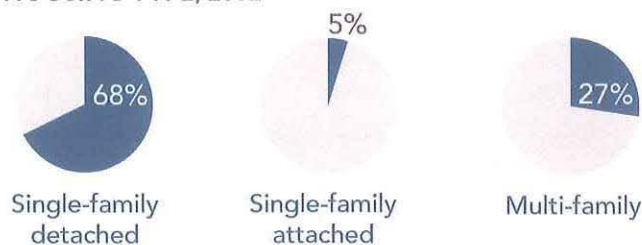
PERCENT OF HOUSING UNITS THAT ARE OWNER-OCCUPIED, 2012



Homeownership and housing type are related.

In Salem, most single-family detached housing is owner-occupied, and most multi-family is renter-occupied.

PERCENT OF SALEM'S HOUSING UNITS THAT ARE OWNER-OCCUPIED, BY HOUSING TYPE, 2012



SALEM'S HOUSING MARKET

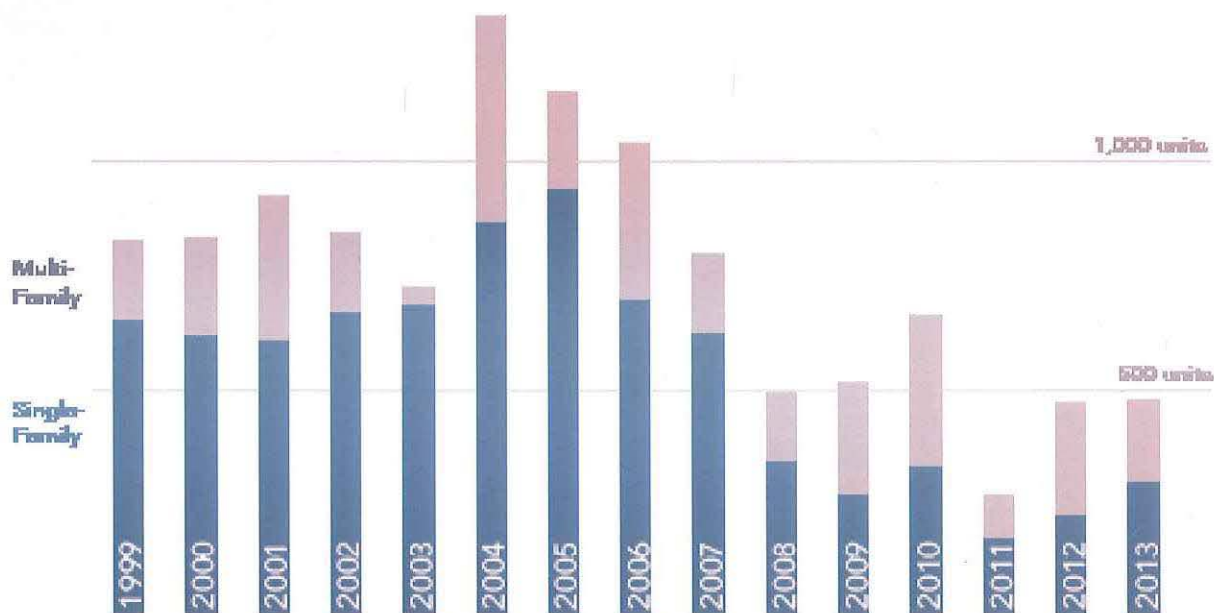
Salem added more than 11,000 dwelling units between 1999 and 2013, the majority of which were single-family (detached and attached combined). Salem added more than 3,500 multi-family units, including more than 200 units in commercial zones.

Salem's housing market is dominated by single-family housing types.

BUILDING PERMITS ISSUED, 1999-2013

Source: Salem Building Permit Database.

Single-family includes single-family detached, single-family attached and manufactured homes.



HOUSING DENSITY BY COMPREHENSIVE PLAN DESIGNATION (DWELLING UNITS PER NET ACRE), SALEM PORTION OF UGB, 1999-2013

Source: Salem Building Permit Database.

A net acre excludes area used for right-of-way.

CBD refers to Central Business District, COM; Commercial, and ROM; River-Oriented Mixed-Use.

Between 1999 and 2013, the average residential density in Salem was 8.0 dwelling units per net acre.

7.3

units/net acre

Single-Family Residential

6.6

units/net acre

Developing Residential

10.6

units/net acre

Multi-Family Residential

16.8

units/net acre

Mixed Use

25.9

units/net acre

Central Business District, Commercial, River-Oriented Mixed-Use

Affordability

The term *affordable housing* refers to a household's ability to find housing within its financial means. Housing affordability affects both higher- and lower-income households and is an important issue for Salem and the region. Low-income households have fewer resources available to pay for housing and have the most difficulty finding affordable housing. Key points about affordability include:

- Salem will have an ongoing need for housing affordable to lower-income households.
- The City is planning for needed housing types for households at all income levels and will work with non-profit and private housing providers to ensure availability of housing affordable to lower-income households.
- Future housing affordability will depend on the relationship between income and housing price. The key question, which is difficult to answer based on historical data, is whether housing prices will continue to outpace income growth.

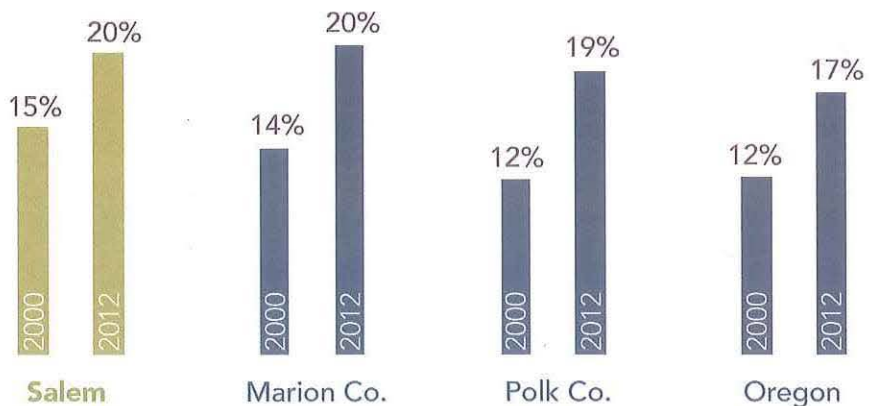
MEDIAN HOUSEHOLD INCOME, 2012



Between 2000 and 2012, poverty increased in Salem, consistent with regional and statewide trends.

POVERTY RATE, 2000 & 2012

The US Census determines poverty using income, family size, and family composition. In 2012, a family with two adults and two children was considered "in poverty" if family income was less than about \$23,200. The Census's poverty thresholds are consistent across the country and do not account for regional differences in cost of living.



PERCENT OF HOUSEHOLDS THAT ARE COST BURDENED, 2012

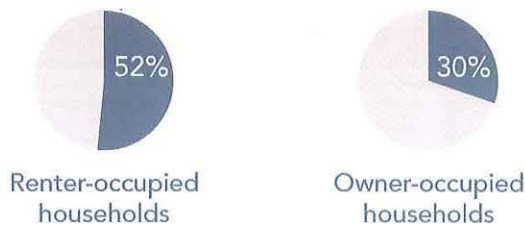
Cost-burdened households spend more than 30% of their gross income on housing.



Cost burden is as common in Salem as it is in the region.

PERCENT OF SALEM'S HOUSEHOLDS THAT ARE COST BURDENED, BY OWNERSHIP STATUS, 2012

Cost-burdened households spend more than 30% of their gross income on housing.



Salem households that rent are more likely to be cost burdened than households that own.

AFFORDABLE HOUSING WAGE FOR A 2-BEDROOM APARTMENT, 2012

The affordable housing wage is based on the Fair Market Rent for a 2-bedroom apartment provided by U.S. Department of Housing and Urban Development (HUD). HUD calculates the Fair Market Rent for each metropolitan statistical area (MSA) as the amount below which 40% of standard-quality apartments are rented. A household making the affordable housing wage will be able to afford Fair Market Rent without spending more than 30% of household income on housing costs.



AVERAGE HOME SALES PRICES, 2013

Source: Zillow, December 2013



Home sales prices in Salem increased by 14% between 2000 and 2013.

RATIO OF MEDIAN OWNER-OCCUPIED HOUSING VALUE TO MEDIAN HOUSEHOLD INCOME, 2012

Lower ratios indicate that housing is more affordable. HUD's standard is 3.0.



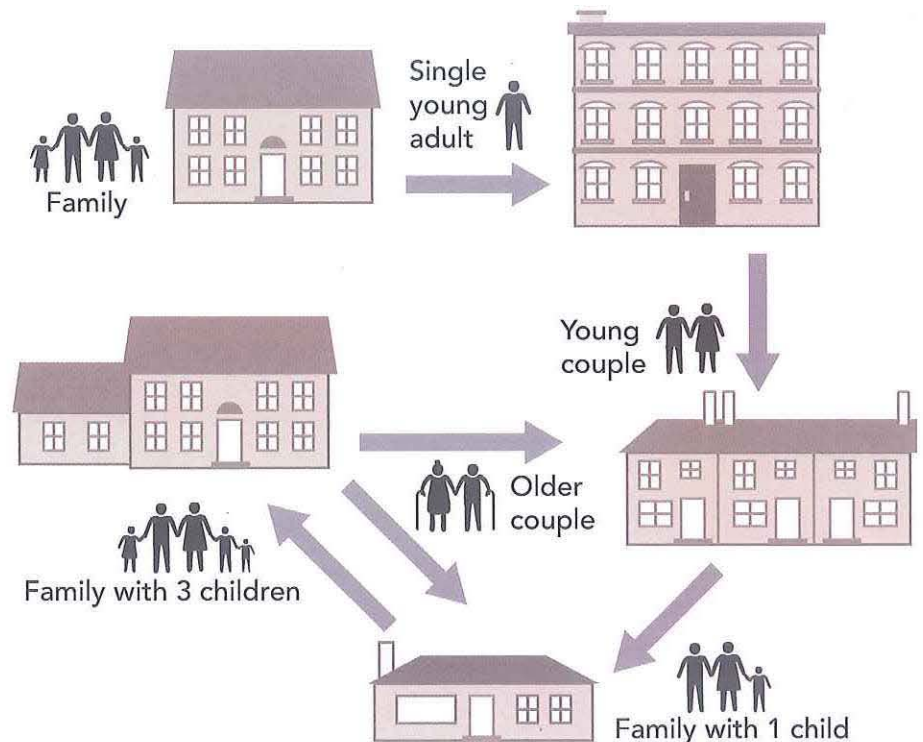
Salem's owner-occupied housing is more affordable than regional averages. The ratio of median owner value to median household income is calculated by dividing the median value of owner-occupied housing by the median household income.

Factors Affecting Housing Need

Studies and data analysis have shown a clear linkage between demographic characteristics and housing choice, as shown in the figure below. Key relationships include:

- Homeownership rates increase as income increases.
- Homeownership rates increase as age increases.
- Choice of single-family detached housing increases as income increases.
- Renters are much more likely to choose multi-family housing than single-family housing.
- Income is a strong determinant of tenure and housing-type choice for all age categories.

HOUSING LIFE CYCLE



FACTORS AFFECTING HOUSING NEED

The linkages between demographics and housing need can be used to predict future housing need in Salem. Three demographic trends are particularly important for Salem:

- Aging of the Baby Boomer Generation (born 1946 to 1964)
- Aging of the Millennial Generation (born early 1980s to early 2000s)
- Continued growth of the Hispanic/Latino population

Aging of the Baby Boomers

Consistent with state and national trends, Salem's population is growing older. By 2035, 24% of the population of Marion and Polk Counties is forecasted to be 60 and over, up from 16% in 2000.

LIKELY TRENDS AMONG BABY BOOMER HOUSEHOLDS:



Aging of the Millennials

Salem is successful at attracting young, working-age people. If Salem continues to attract young people, then the City will continue to have demand for housing for families, especially housing affordable to younger families with moderate incomes.

LIKELY TRENDS AMONG MILLENNIAL HOUSEHOLDS:



Continued growth of the Hispanic/Latino population

Salem's Hispanic/Latino population grew by more than 11,000 people (57%) between 2000 and 2010. Nationwide, the Hispanic/Latino population is predicted to be the fastest growing racial/ethnic group over the next few decades.

Characteristics of Hispanic households compared to Non-Hispanic households

The following factors are predicted to drive demand for larger, lower-cost renting and ownership opportunities for larger households with more children and multiple generations:

Household sizes Larger than average household sizes.	Homeownership rates Lower than average home ownership rates.	Income Lower than average income.
---	---	--------------------------------------

Implications for Salem's Housing:

Need for smaller, lower-cost housing near transit and urban amenities such as shopping and health care services.

Implications for Salem's Housing:

Need for low-cost ownership opportunities with high quality of life.

Millennials' incomes will increase as they age, but the impact of the Great Recession is unclear. Millennials' ability to afford housing will impact the type of housing they can afford. In the next 3 to 7 years, most Millennials may need rental housing. Over the longer term, some Millennials will purchase homes, possibly smaller homes on smaller lots than their parents.

Development Capacity

Definitions

Buildable residential land: Unconstrained suitable vacant and partially-vacant land designated for residential development.

Vacant land: Unconstrained suitable land designated for residential development.

Partially vacant land: Unconstrained suitable land with existing residential development that could support additional residential development.

Constrained land: Land that is not available for development based upon one or more factors such as environmental protections or lands committed for public use.

Dwelling unit: Any type of residential structure. Salem has an average of 2.6 persons per dwelling unit.

Capacity: Number of dwelling units that can be accommodated on buildable land at planned densities.

Housing density: Number of dwelling units in an acre of land, with 43,560 square feet to 1 acre. Housing density can be expressed as the number of dwelling units per net or gross acre.

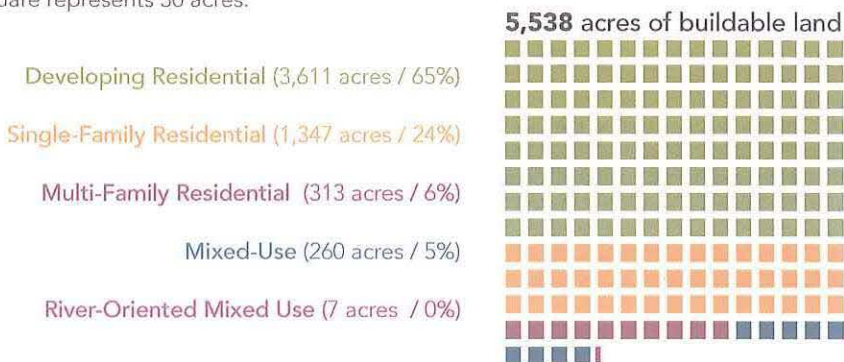
Gross acre: Includes rights-of-way (land used for roads and streets). Land used for rights-of-way is not buildable.

Net acre: Does not include rights-of-way.

Salem added more than 11,000 dwelling units between 1999 and 2013, the majority of which were single-family (detached and attached combined). Salem needs more than 3,500 multi-family units, of which more than 200 units could be located in commercial zones.

SALEM'S BUILDABLE VACANT AND PARTIALLY VACANT RESIDENTIAL LAND LAND, BY COMPREHENSIVE PLAN DESIGNATION, 2014

1 square represents 30 acres.



The capacity analysis estimates the number of new dwelling units that can be accommodated on Salem's buildable vacant and partially vacant residential land. The capacity analysis provides an estimate of how much housing can be accommodated on Salem's buildable residential land based on historical densities, with deductions for land on slopes and areas for future rights-of-way.

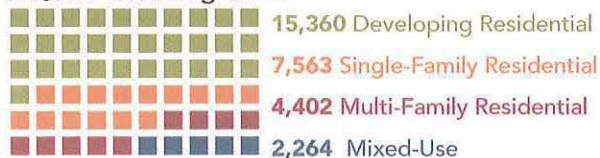
The capacity analysis shows that Salem's vacant and partially vacant land has capacity for more than 29,500 new dwelling units, about 75% of which are in Single-Family and Developing Residential Comprehensive Plan Designations. The majority of housing in these designations is single-family detached housing, with some lower-density attached housing allowed, such as duplexes and townhouses.

Capacity on Buildable Residential Land

CAPACITY ON RESIDENTIAL LAND, BY PLAN DESIGNATION

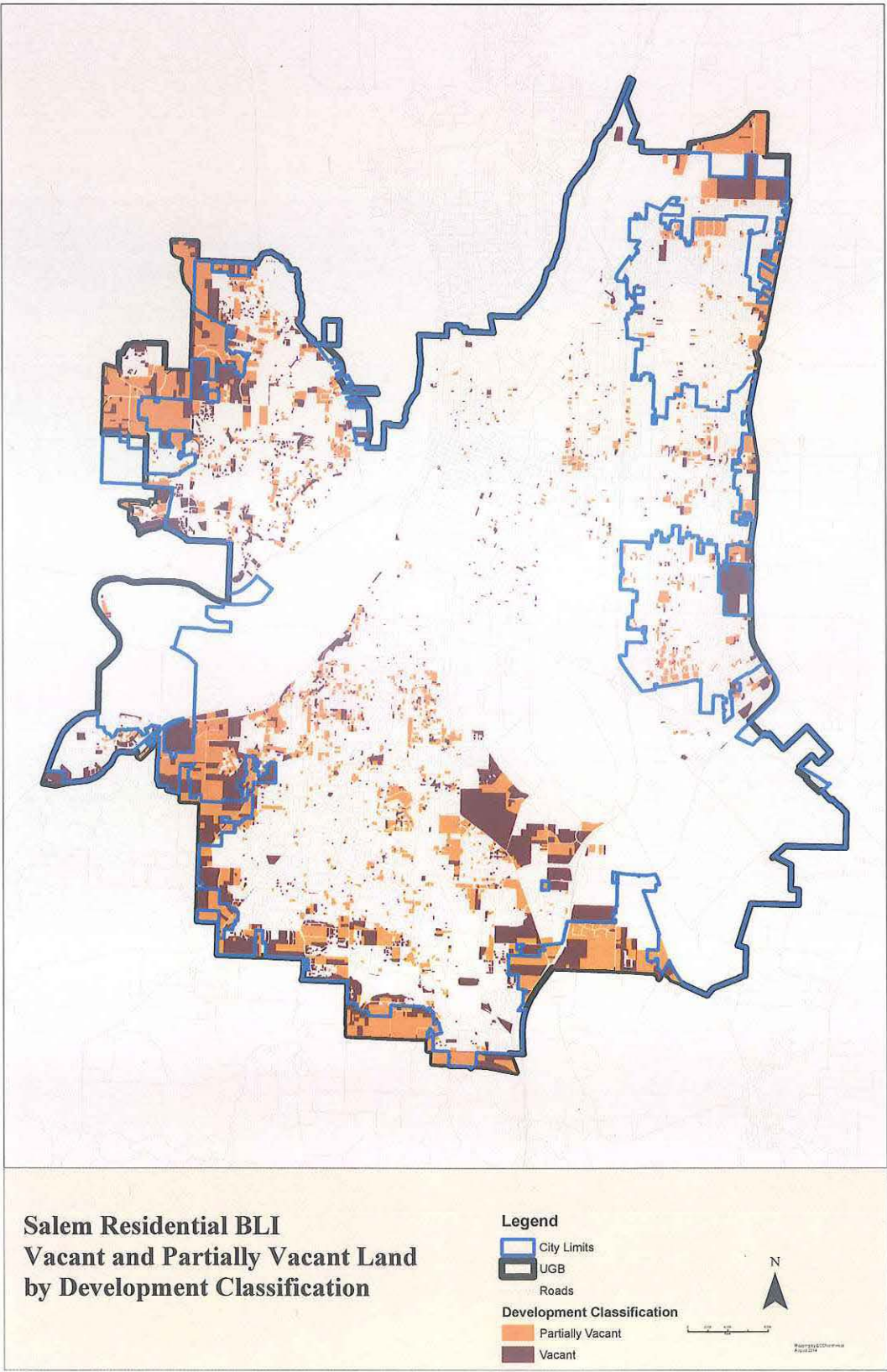
1 square represents 500 dwelling units.

29,589 dwelling units



DENSITY ON SALEM'S RESIDENTIAL LAND BASED ON HISTORICAL DENSITIES, DWELLING UNITS PER GROSS ACRE





Accommodating Needed Housing

Demand for Residential Land, by Housing Type

Salem's population growth over the next 20 years will affect the number of new households created and the demand for residential land. Salem's forecast for new housing is based on the forecast for population growth. Using Marion County's adopted population forecast as the basis, Salem's population will grow at a rate of 1.25% per year, adding 59,239 new people between 2015 and 2035.

FORECASTED
AVERAGE ANNUAL
GROWTH RATE,
2015-2035



FORECASTED
TOTAL NEW
POPULATION,
2015-2035



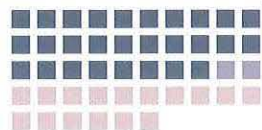
Population increase:
59,239

New population in Salem will require 23,355 new dwelling units over the 20-year period. The analysis of the factors affecting housing need and demographic changes suggests that Salem need more diverse housing types, including more townhouses and single-family attached housing and more multi-family housing.

FORECASTED
TOTAL NEW
DWELLING UNITS,
2015-2035

1 square represents
500 dwelling units.

23,355 new dwelling units



14,013 single-family detached (60%)
1,168 single-family attached (5%)
8,174 multi-family (35%)

Comparison of Housing Capacity to Housing Demand

The last step in the Housing Needs Analysis is to compare the capacity of Salem’s vacant and partially-vacant residential land with demand for housing by Comprehensive Plan designation.

Salem has enough land to accommodate growth of housing in Single-Family and Developing Residential, with a surplus of capacity for 9,131 additional dwelling units. Salem has a deficit of land in the Multi-Family Residential designation. It needs land for 2,897 dwelling units, which will require about 207 acres of land.



The key finding of the housing needs analysis is that Salem has a surplus of land for single-family detached housing types and a deficit of about 207 acres of land in the Multi-Family Residential plan designation. Salem’s options for addressing this deficit include:

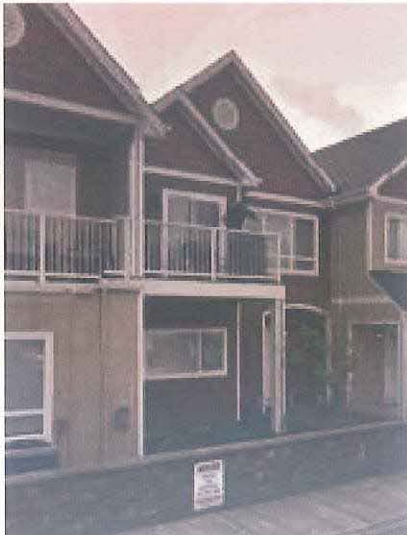
- **Redesignate or rezone land to MF.** Salem’s biggest opportunity to address the deficit of Multi-Family land will be through redesignating land from SF (or possibly DR) to MF. Evaluate tools to increase redevelopment activity and mixed-use development. Salem’s primary redevelopment opportunities are in commercial areas or redeveloping industrial areas, with opportunities for mixed-use development that includes multi-family development.
- **Increase opportunities for development of multi-family housing types.** Salem can allow a wider range of lower-density multi-family housing types (such as duplexes or townhouses) in single-family zones. Salem may be able to increase multi-family housing development by making it easier to build multi-family housing, through simplifying the planned unit development process or creating alternative ways to comply with the City’s design standards.
- **Monitor and report on multi-family development activity and land sufficiency.** The City should monitor and report on the deficit of multi-family land, track land redesignations and rezonings, and monitor multi-family development. Monitoring can help the City understand the market demand for multi-family and other housing types, allowing the City to better respond to the market.

Comprehensive Plan Designations with residential capacity

- Developing Residential (DR)
- Single-Family Residential (SF)
- Multi-Family Residential (MF)
- Mixed-Use (MU)
- River-Oriented Mixed-Use (ROM)

Residential zoning districts

- Residential Agriculture (RA)
- Single Family Residential (RS)
- Duplex Residential (RD)
- Multiple Family Residential (RM)
- High Rise Multiple Family Residential (RH)



The Housing Needs Analysis concluded that Salem has a surplus of land for single-family detached housing and a deficit of land for single-family attached and multi-family housing. The recommendations for housing policy changes and implementation strategies focus on increasing capacity for attached and multi-family housing to address the identified land deficiency. While the full Implementation Strategy documents present recommendations both for revisions to Salem's Comprehensive Plan policies and Implementation Strategies to address the multi-family land deficit, this section focuses on the Implementation Strategies.

Implementation Strategies

Addressing Salem's deficit of approximately 207 acres of land for multi-family housing and demonstrating compliance with Goal 10 will require increasing the amount of land available for multi-family development. The Advisory Committee recommends that decision makers consider a range of ways to address the deficit of multi-family land.

Strategies to allow attached housing in single-family zones:

Implementing Measure 1.1: Explore allowing duplexes outright in single-family zones (SF and RA zones) on any lot of 7,000 square feet or more.

Implementing Measure 1.2: Explore allowing townhouses as permitted uses in single-family zones (SF, RA, and RD zones) or explore revising special use standards and minimum lot sizes to make it easier to develop townhouses.

Implementing Measure 1.3: Explore allowing tri- and four-plexes outright in single-family zones (SF, RA, and RD zones) on corner lots of 7,000 square feet or more.

Redesignate or Rezone Land for Multi-family Development

Implementing Measure 1.4: Identify opportunities to redesignate or rezone land from single-family uses to multi-family uses. The process should result in city-initiated plan amendments and zone changes to address the multi-family land deficit.

Lowering Barriers to Multi-family Housing Development

Implementing Measure 2.1: Develop a menu of options of pre-approved design standards for multi-family housing that allow developers to select preferred design elements. The design standards should be flexible, ensure quality design that fits with community standards, and present clear and objective standards. If the developer selects at least the minimum number of design elements from the menu, the proposal would not need to go through the public hearing process.

This measure includes developing menus of pre-approved design standards for tri-plex and four-plex units and for smaller multi-family buildings with five to ten units that allow developers to select preferred design elements.

HOUSING POLICY CHANGES AND IMPLEMENTATION STRATEGIES

Implementing Measure 2.2: Revise the Planned Unit Development regulations to permit more flexibility about development standards (such as setbacks), allowing for development of more affordable housing. The revisions should allow more flexibility in the process, decrease the complexity of the process, and increase the speed of the process.

Implementing Measure 2.3: Evaluate opportunities to decrease parking requirements for tri-plex and four-plex units and for small multi-family structures with five to ten units.

Identify opportunities to Increase Redevelopment Activity

Implementing Measure 3.1: Identify and evaluate tools to increase redevelopment activity by using tools such as reduced systems development charges for redevelopment projects or the vertical housing tax credit for mixed-use development.

Increase Opportunities for Development of New Affordable Housing

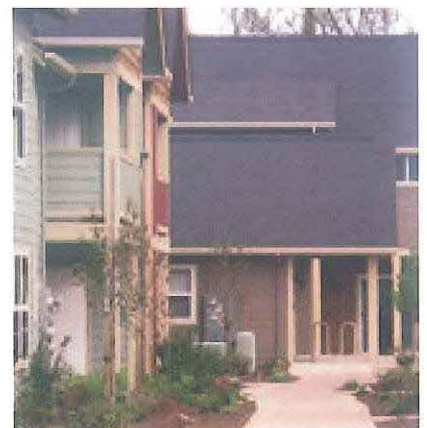
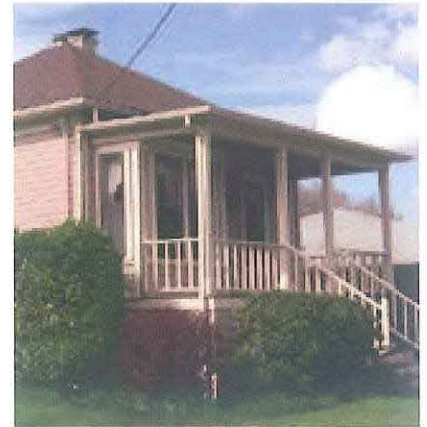
Implementation Measure 4.1: Develop, adopt, and implement affordable housing policies based on an affordable housing strategy that articulates the City's vision and goals for affordable housing. The affordable housing strategy should be implemented through policies, strategies, and specific actions.

Implementing Measure 4.2: Develop an Accessory Dwelling Unit (ADU) Ordinance that allows ADUs in appropriate zoning designations.

Implementing Measure 4.3: Develop different development standards for existing homes in older, established neighborhoods in order to decrease the need for adjustments and variances.

Process Steps

The policies and implementation strategies proposed in this project will require additional work. The Advisory Committee recommends that the City Council direct staff to develop a work program to implement these strategies.



Economic Opportunities Analysis: Introduction

The Economic Opportunities Analysis provides necessary information for managing Salem's commercial and industrial land base to support the City's vision for economic development.

Salem's Economic Opportunities Analysis provides information to support economic development planning and management of Salem's commercial and industrial land. It provides the City with information about Salem's economy and the city's role as the primary employment center in the Mid-Willamette Valley and the southern outpost of the Portland regional economy.

The Economic Opportunities Analysis is intended to comply with Statewide Planning Goal 9, which directs cities to plan for economic growth. Within the context of Goal 9, the Economic Opportunities Analysis is an analysis of the community's economic patterns, potentialities, strengths, and deficiencies as they relate to state and national trends. It focuses on the comparative advantage of the city when planning for major commercial and industrial development. The Analysis includes extensive analysis of Salem's commercial and industrial land base to determine how much land is vacant or partially vacant.

The result of the Economic Opportunities Analysis is an estimate of land needed to accommodate the forecast of commercial and industrial employment growth for the 2015-2035 period.

City staff and ECONorthwest staff worked with an Advisory Committee to review these results and to provide input for policy changes to address land deficits, most notably in land needed for commercial uses, and to manage high value industrial lands.

PRODUCTS OF THE ECONOMIC OPPORTUNITIES ANALYSIS



Salem's Vision for Economic Development

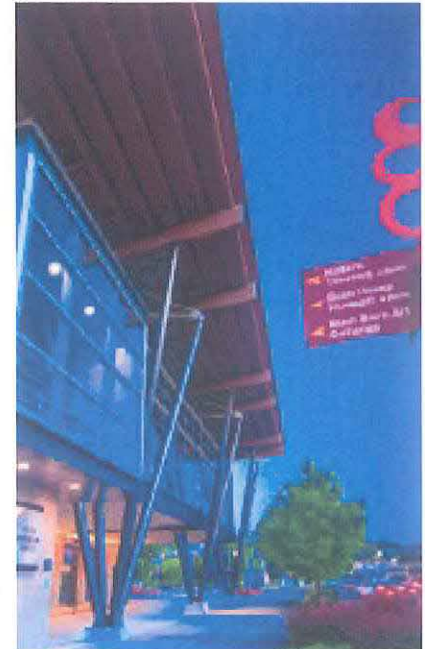
The City's broad economic development goal is to attract and retain jobs to increase the economic prosperity for Salem residents and businesses.¹

The City's approach to accomplishing this goal is to:

- Implement an economic development strategic plan that focuses on the role of the City and other partners to create jobs and encourage economic growth.
- Attract higher density employment to downtown.
- Attract companies to the Mill Creek Corporate Center and Salem Renewable Energy and Technology Center by marketing both sites.

The City's strategies for accomplishing this goal are:

- **Stay and Grow in Salem.** This strategy protects Salem's existing economic base by helping to expand and grow existing businesses and by diversifying the traded-sector businesses in Salem to support existing companies. This strategy will require Salem (and regional partners) to invest in infrastructure improvements, ensure that Salem has the right mix of land for development, provide incentives and a range of financial resources for economic development, and to support and invest in economic development partners.
- **Rely on Strengths of Regional Partnerships.** The City will continue to emphasize regional partnerships to provide a full range of economic development services. The City will continue to work with local partners to retain and recruit businesses, provide utilities, prepare the workforce, and develop property. In addition, the City will collaborate with its partners on the availability of land and infrastructure development to support job creation.
- **Grow Small Businesses.** The City will support growth of small businesses through programs such as the Fairview Loan Program or by helping businesses make connections to other partners. The City will continue to diversify Salem's economy and increase local prosperity through growth of businesses in new and existing clusters and by focusing on growth of businesses in key target industries.
- **Attract New Businesses.** Available development-ready and other buildable land at the Mill Creek Corporate Center and Salem Renewable Energy and Technology Center will attract businesses that are considering locating in Salem or the Willamette Valley.



¹The information in this section is summarized from the memorandum "Citywide Economic Development Strategy Development" dated December 7, 2012 from John Wales (Director of Urban Development) to the City Council.

Factors Affecting Economic Growth in Salem

Employment in Salem grew faster than the national average.

Growth in service-oriented sectors outpaced other employment, especially manufacturing.

Unemployment rates in Marion and Polk counties are generally higher than the national average.

Salem's economy and employment will grow as a result of growth in the national and regional economy, as well as factors in Salem's local area. The following are key trends that have implications for economic growth in Salem.

Employment in Marion and Polk counties grew at 1.3% between 1990 and 2013, adding more than 40,000 jobs. In comparison, employment grew at 0.9% annually in the U.S. and 1.3% in Oregon over the 23-year period.

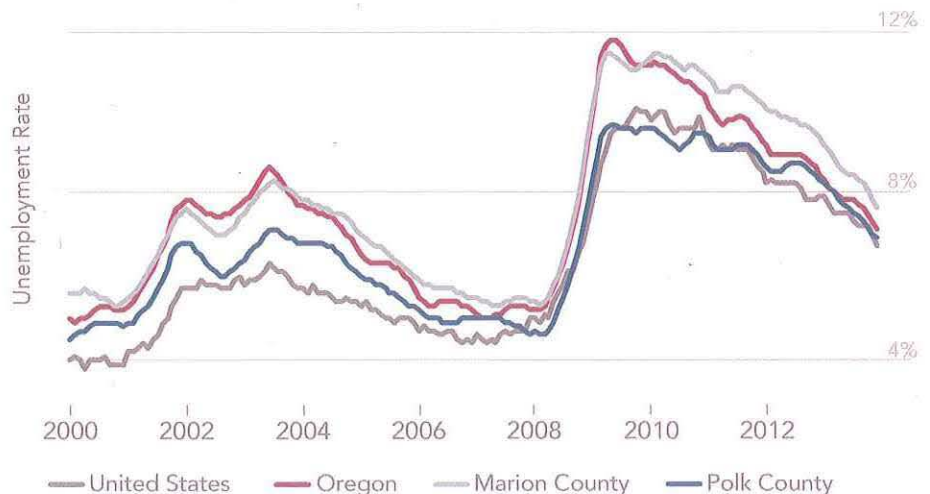
CHANGE IN PERCENTAGE OF EMPLOYMENT IN SERVICE ORIENTED SECTORS, 1980 AND 2013

Source: US Bureau of Labor Statistics



UNEMPLOYMENT RATE, 2000 - 2013

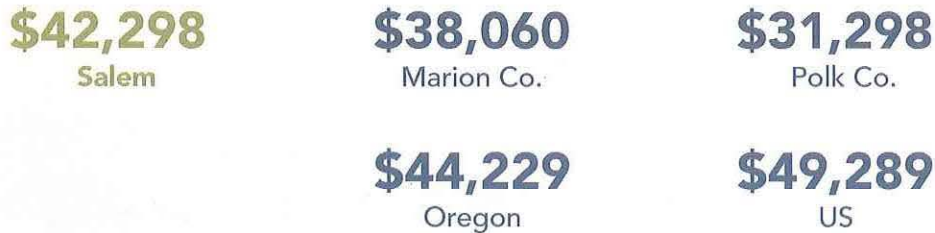
Source: US Bureau of Labor Statistics



FACTORS AFFECTING ECONOMIC GROWTH IN SALEM

AVERAGE ANNUAL PAY, 2012

Source: Oregon Employment Department: Oregon Labor Market Information System



AVERAGE NUMBER OF EMPLOYEES IN PRIVATE BUSINESSES, 2011

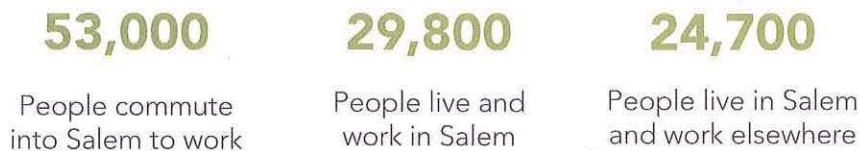


PERCENTAGE OF PRIVATE BUSINESSES WITH 100 OR FEWER EMPLOYEES, 2011



The majority of businesses in Salem have 100 or fewer employees.

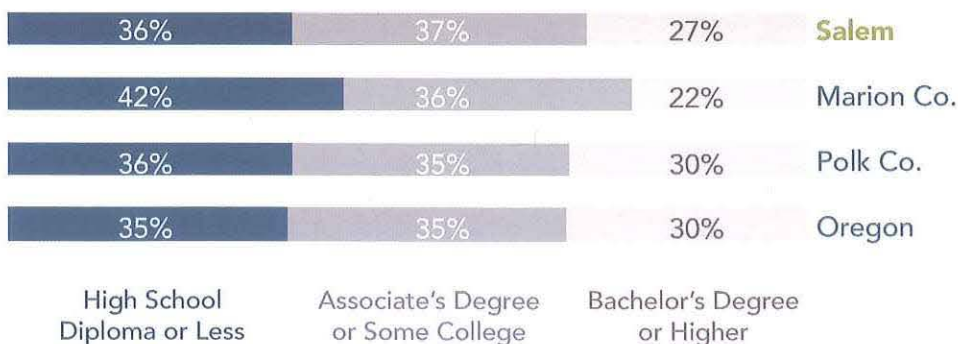
COMMUTING PATTERNS IN SALEM, 2012



Salem is a regional economic center.

Sixty-four percent of Salem's workers commute into Salem. This is similar to other large cities in the Willamette Valley.

EDUCATIONAL ATTAINMENT, PERCENT OF THE POPULATION AGE 25 AND OVER, 2012



Employment in Salem

In 2012, Salem had more than 92,000 covered employees² at nearly 6,500 businesses and other employers. Salem's average employer size was 14 employees per employer. The majority of employees in Salem were in the following sectors: Government (30%), Health Care and Social Assistance (15%), Retail (11%), Accommodation and Food Service (8%), and Manufacturing (6%).

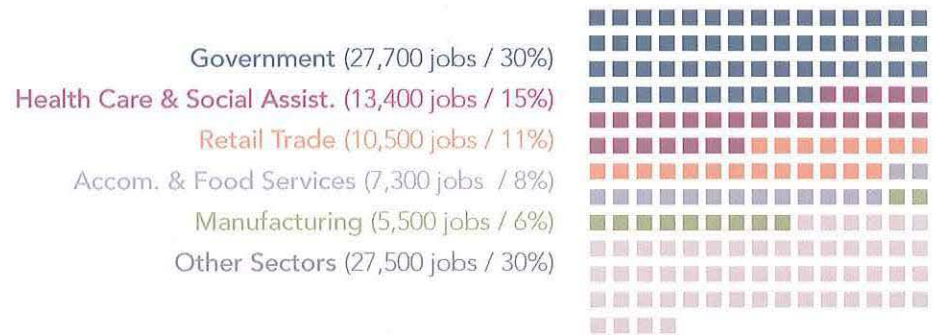
Government is the largest employer in Salem.

Thirty-percent of Salem's workforce is in Government, with 19% of the workforce in State Government.

JOBS BY SECTOR OF FIRM, SALEM, 2012

1 square represents 500 jobs.

Source: Oregon Employment Department, Quarterly Census of Employment and Wages



The average pay per employee in Salem was about \$42,000 in 2012. Government and Healthcare and Social Assistance had the highest average pay, and they also are the sectors that account for the most jobs in Salem. Accommodations and Food Services, Retail Trade, and Manufacturing had below-average pay.

Government and Healthcare have higher than average pay in Salem.

AVERAGE PAY BY SECTOR OF FIRM, SALEM, 2012

Source: Oregon Employment Department, Quarterly Census of Employment and Wages



²Covered employment is employment covered by unemployment insurance. Covered employment does not include all workers in an economy. Most notably, covered employment does not include sole proprietors. Analysis of data shows that covered employment reported by the Oregon Employment Department for Marion and Polk counties is only about 77% of total employment reported by the U.S. Department of Commerce. While this analysis includes only covered employment, the employment forecast is based on an estimate of total employment in Salem.

EMPLOYMENT IN SALEM

The majority of manufacturing employment in Salem is in Food Products manufacturing, with an average pay per employee of nearly \$32,000, which is below the city average pay per employee. The average pay in other manufacturing industries, such as Computer and Electronic Products or Fabricated Metal Products is higher than Salem's average pay.

The national average pay in other manufacturing sectors, such as Technology, Equipment, Chemical, or Specialty Metals, are above Salem's average pay per employee.

MANUFACTURING JOBS, SALEM, 2012

1 square represents 50 jobs.

Source: Oregon Employment Department, Quarterly Census of Employment and Wages

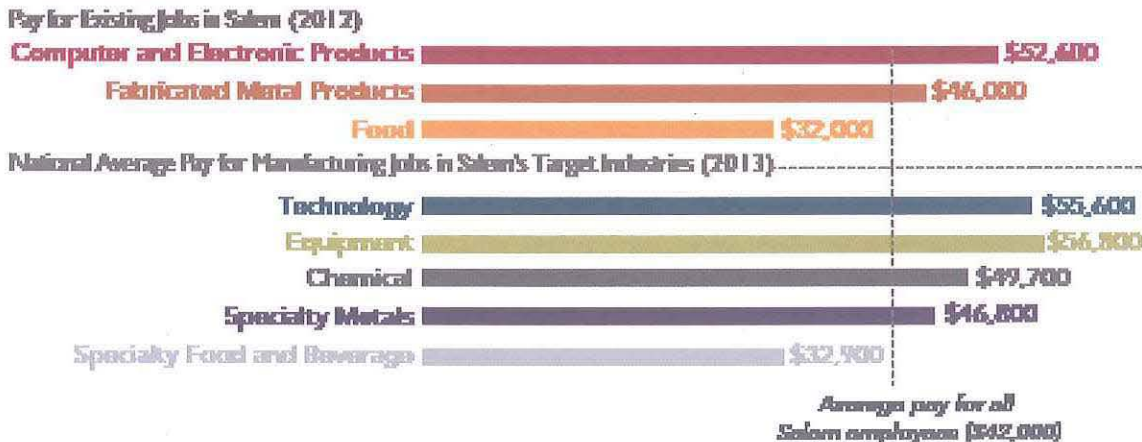


Nearly half of Salem's manufacturing jobs are in Food and Beverage Manufacturing, which has lower than average pay.

Salem's vision for economic development is growth of traded-sector industries, most with higher than average pay. Examples include technology manufacturing, computer and electronic product manufacturing, or equipment manufacturing. Salem's economic development vision focuses on growing existing and new traded-sector businesses in key industries, such as food and beverage processing, and other complementary industries.

PAY IN SELECTED EXISTING MANUFACTURING SECTORS IN SALEM, 2012 AND 2013

Source: Oregon Employment Department, Quarterly Census of Employment and Wages, and the US Bureau of Labor Statistics



Salem's Competitive Advantages

Economic development opportunities in Salem will be affected by national, state, and local economic conditions. Economic conditions in Salem relative to these conditions in other portions of the Willamette Valley form Salem's competitive advantages for economic development. Salem's competitive advantages have implications for the types of firms most likely to locate and expand in the area.

There is little that metropolitan area jurisdictions can do to influence the national and state conditions that affect economic development, though they can influence local factors that affect economic development. Salem's primary competitive advantages are:



- **Location.** Salem is located in Marion and Polk counties, on Interstate I-5, less than an hour south of Portland. Salem is one of Oregon's largest cities. Businesses in Salem have access to natural resources from surrounding rural areas, such as agricultural products, lumber, and other resources.
- **Transportation.** Businesses and residents in Salem have access to a variety of modes of transportation, but the most important is I-5. Businesses that need relatively easy automotive access to I-5 and other major roads in the region may be attracted to Salem.
- **Presence of State government.** Salem is the capital of Oregon, and about 27,700 State government jobs are located in Salem. State government offers a range of employment opportunities, from jobs requiring highly skilled employees to jobs requiring little formal education.
- **Quality of life.** Salem's quality of life attributes include: cultural amenities, shopping opportunities, and access to outdoor recreation. Salem's high quality of life is likely to attract businesses and entrepreneurs that want to locate in a high-amenity area.
- **Labor market.** Businesses in Salem have access to highly educated skilled workers, nearby college students, and unskilled workers. Commuting patterns show that businesses in Salem are able to attract skilled and unskilled workers living within Salem and from the Willamette Valley and Portland Metropolitan Region.
- **Public policy.** The City can impact economic growth through its policies about the provision of land and redevelopment. Businesses may choose to locate in Salem (rather than in a different part of the Willamette Valley) based on: development charges, availability of public infrastructure, and attitudes towards businesses.

Salem's Target Industries

Salem's comparative advantages will affect the types of businesses most likely to locate in Salem. Target industries were identified based on research about a wide range of potential target industries that might be appropriate for Salem. The list was then narrowed down, based on in-depth research about the viability of target industry development in Salem and focusing on industries that meet the City's economic development goals and complement the City's competitive advantages.

Salem's economic development policy is to assist existing companies to grow and expand within Salem. The industries with existing concentrations of employment in either traded-sector or higher-than-average wages are:

- **Food and beverage manufacturers.** Food and beverage manufacturing is Salem's largest existing manufacturing industry.
- **Medical services.** Employment in medical services will grow with population growth to the extent that Salem continues to offer medical services not available in surrounding areas.
- **Government services.** Salem will continue to be a center for government jobs, especially for jobs in State Government.

Salem identified the following traded-sector industries as target industries. Growing and attracting businesses in these industries will strengthen Salem's manufacturing businesses, increasing the share of employment in manufacturing industries. Most of these industries have incomes above Salem's average, with national averages for employment in these sectors ranging from \$46,000 to \$57,000.

- **Technology manufacturing,** such as manufacturers of renewable energy equipment, avionics, and medical devices.
- **Equipment manufacturing,** such as manufacturing of equipment for: recycling machinery, construction machinery, farm equipment, semiconductor machinery, and other machinery used by businesses in Salem and the broader Willamette Valley.
- **Specialty metal manufacturing,** such as ornamental metal manufacturers, prefabricated metal structures, structural metal, bolt and washer manufacturing, and other specialty metal manufacturing.
- **Specialty food and beverage manufacturing.** Salem's existing concentration of food and beverage manufacturing make it attractive to other food and beverage manufacturers. Salem has opportunities to grow and attract food manufactures of all types and sizes.
- **Chemical manufacturing,** such as manufacturing of chemicals for coatings, glass, films, plastics, and concrete.



Commercial and Industrial Buildable Land in Salem

Definitions

Buildable employment land: Unconstrained suitable vacant and partially-vacant land designated for employment development.

Vacant land: Unconstrained suitable land designated for employment development.

Partially vacant land: Unconstrained suitable land with existing employment development that could support additional employment development.

Constrained land: Land that is not available for development based upon one or more factors such as environmental protections or lands committed for public use.

Suitable land: Vacant or partially vacant land without development constraints that could be developed during the 20-year planning period.

Plan Designations:

- Employment Center (EC)
- Industrial (IND)
- Industrial Commercial (ID)
- Commercial (COM)
- CB is Central Business District
- River-Oriented Mixed-Use (ROM)
- Mixed-Use (MU)

Salem has 1,945 acres of vacant and partially vacant land in Comprehensive Plan designations. Nearly 1,400 acres of Salem's vacant land is in industrial designations, with about 265 vacant acres in commercial designations and nearly 290 acres in mixed use designations.

SUITABLE ACRES IN VACANT AND PARTIALLY VACANT TAX LOTS BY PLAN DESIGNATION, SALEM UGB, 2014

1 square represents 1% or 19.5 acres of total vacant land
Source: ECONorthwest analysis of City of Salem GIS data



Nearly half of Salem's employment land is in sites larger than 20 acres. The majority of this land is in industrial areas. Salem's supply of large industrial sites is unique within the Willamette Valley, making Salem attractive to traded-sector employers who need large sites.

LOT SIZE BY PLAN DESIGNATION, SUITABLE ACRES, SALEM UGB, 2014

Source: ECONorthwest analysis of City of Salem GIS data

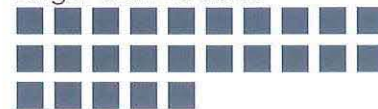
Smaller than 5 acres



5 to 20 acres



Larger than 20 acres

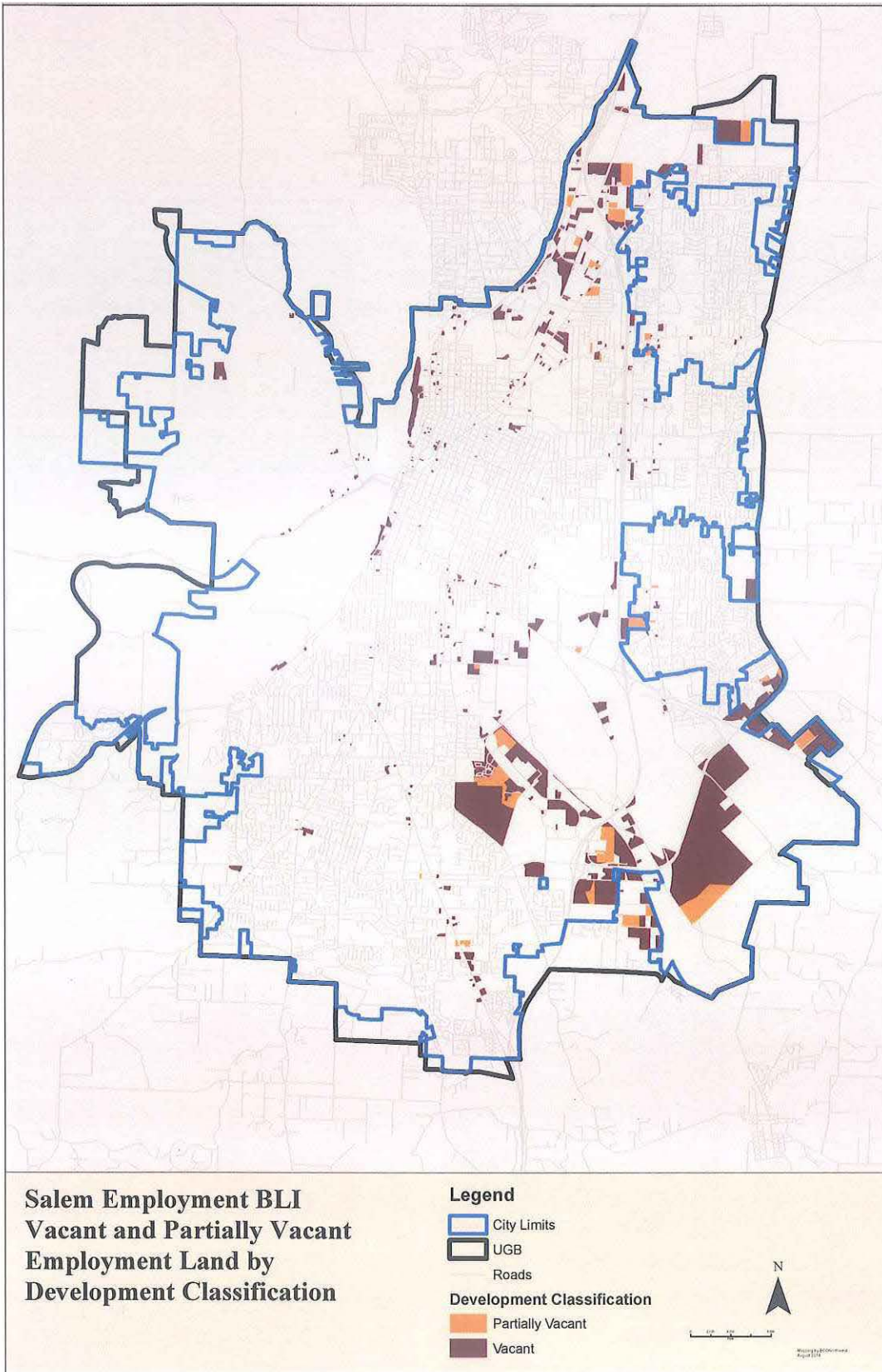


Industrial / Commercial

1 square represents 30 suitable acres

³The "Fairview Training Center Redevelopment Master Plan" shows 21 acres of capacity for office, retail, and commercial industrial development in MU, as documented in the EOA report.

BUILDABLE COMMERCIAL AND INDUSTRIAL LAND



Forecast of Employment Growth and Land Sufficiency

Salem's employment is forecast to grow at the same rate as its population, 1.25% per year.

The rate at which Salem's employment base grows over the next 20 years will affect development of new commercial and industrial buildings and demand for employment land. Salem's employment forecast assumes that employment will grow at the same rate as population growth, at 1.25% average annual per year. This assumption is appropriate, as Salem is the regional employment and commerce center.

Employment growth will result in demand for 1,114 acres of land.

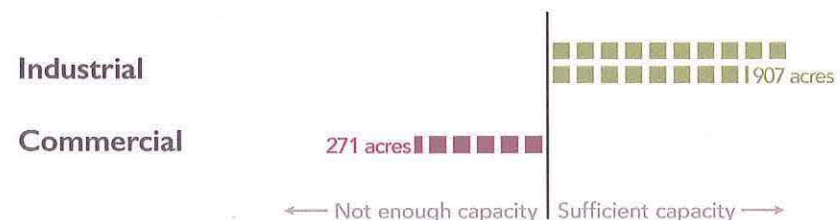
FORECASTED DEMAND FOR LAND TO ACCOMMODATE EMPLOYMENT, 2015-2035



Salem has a 271-acre deficit of land for commercial uses.

Salem has enough land to accommodate industrial growth over the next 20 years, but there is a 271-acre deficit of land for expected commercial growth. The City can address the commercial land deficit by: zoning land for retail uses in or near neighborhoods, encouraging the redevelopment of existing commercial areas, encouraging higher density office or mixed-use development in downtown or other employment areas, or by redesignating some lands to commercial designations.

While Salem has more industrial land than it will need to accommodate expected industrial growth over the next 20 years, the employment forecast assumes that industrial employment will grow at the same pace as population. Salem's economic development strategy, however, envisions that Salem will grow or attract more traded-sector employees than have historically located in Salem. The majority of these employees would be in manufacturing and would require industrial land.



Short Term Land Supply and Redevelopment

Short-term land supply

Goal 9 requires Salem to assess the short-term supply of land based on the criteria that land can be ready for construction within one year. Cities must provide at least 25 percent of the total land supply within the urban growth boundary designated for industrial and other employment uses as short-term supply.

About 510 acres (26%) of Salem's vacant and partially vacant employment land is either ready for development or could be serviced within one year. These lands include: about 176 acres of land on sites State Certified as development-ready (in the Mill Creek Corporate Center and the Salem Renewable Energy and Technology Center), about 160 additional acres in the Mill Creek Corporate Center, about 80 acres at the Salem Municipal Airport, and about 95 acres in the Fairview Urban Renewal Area.

Redevelopment

Salem is encouraging redevelopment of underutilized employment areas in a number of ways. Salem has seven urban renewal areas (URA), each of which has an urban renewal plan to facilitate redevelopment, including identifying financial tools to facilitate redevelopment. The majority of land in the urban renewal areas has existing development, with the exception of the Mill Creek Corporate Center. As a result, most new development in these areas will be redevelopment of underutilized areas.

Outside of the urban renewal areas, Salem can expect modest redevelopment of industrial areas. The most likely types of redevelopment are reuse of existing buildings. Salem staff has seen increasing interest in reuse of existing industrial buildings, both for industrial uses and for commercial or other uses. Salem's limited supply of suitable vacant industrial buildings limit opportunities for re-use.

Redevelopment occurs when achievable rents exceed the current return on investment of the land and improvements. Salem's deficit of commercial land makes redevelopment of underutilized land or commercial buildings with relatively low improvement value more likely.

Analysis of building and land values of developed commercial and industrial areas suggests that Salem may have between 50 and 100 acres of employment land redevelop between 2015 to 2035. Land located in urban renewal areas is more likely to redevelop than land outside of urban renewal areas because of the infrastructure improvements and redevelopment tools available in the urban renewal districts. Redevelopment could help address the deficit of commercial land.

Salem's Site Needs for Target Industries

Salem's economic development vision and goals envision growth of traded-sector target industries, mostly in manufacturing industries. One of the key factors that businesses consider when making decisions about where to locate is the availability of sites that meet the needs of their business. The following is a summary of the characteristics of sites needed by Salem's target industries in manufacturing.



- **Site size.** Site size is important to general industrial users because the site needs to be large enough to accommodate the needed built space, storage space, parking, on-site circulation, transportation access and circulation, and must provide space for future expansion. Business Oregon finds that competitively sized general manufacturing firms have sites 10 acres in size (High-tech or campus industrial manufacturing have 25 acres.)
- **Land ownership.** Businesses in Salem's target industries need sites with two or fewer owners to reduce the cost and uncertainty of land assembly that can make developing an industrial site with multiple land owners financially infeasible.
- **Automotive access.** Manufacturing buildings are generally located on arterial or major collector streets. Business Oregon finds that manufacturing and industrial firms need to be located relatively close to an interstate highway or principle arterial road. Traffic from the industrial development should not be routed through residential neighborhoods.
- **Topography.** Industrial buildings require flat sites to reduce costs and offer maximum flexibility. Business Oregon finds that competitive sites for high tech manufacturing and campus industrial generally have a slope of 5% or less.
- **Access to services.** Industrial buildings require access to municipal water, municipal sanitary sewer, and electricity/gas. Developing a site with direct access to municipal services is substantially more cost-effective than extending municipal services to an unserved site. Business Oregon finds that competitive sites must have access to urban services, including water, wastewater, natural gas, electricity, and major telecommunications facilities.
- **Surrounding land uses.** Industrial uses are generally compatible with other industrial uses, commercial uses, agricultural uses, and some public uses. Noise or odor conflicts may make some industrial uses incompatible with nearby residential uses.

High Value Industrial Land

High value industrial land has unique characteristics, making it highly desirable for manufacturing and other traded-sector employment. High value industrial land has the following characteristics: it is designated for industrial uses, it is in flat parcels (most frequently in large parcels at least 10 acres in size), is located within surrounding compatible industrial and other uses, has direct access to a state highway or I-5, and is serviced or planned to be serviced with water and wastewater infrastructure. Table 1 presents a list of high-value industrial sites in Salem, including their key characteristics and why it is important to preserve these sites for industrial uses.

Table 1. High value industrial land, Salem portion of the UGB, 2014

Site Name	Key Characteristics	Why it is Important to Preserve for Industrial Uses
Mill Creek Corporate Center	<p>Mill Creek has about 488 acres of relatively flat vacant land available for development. About 136 acres of this area is serviced and development ready.</p> <p>The City expects the majority of land in the Mill Creek Corporate Center to be development ready over the planning period as upgrades to public infrastructure is completed.</p> <p>The Mill Creek Corporate Center is within two miles of I-5 and adjacent to Highway 22, providing excellent transportation access.</p> <p>It is owned by the State of Oregon, who is interested in seeing development happen there.</p>	<p>The Mill Creek Corporate Center accounts for about one-third of vacant suitable industrial land in Salem.</p> <p>The City of Salem and the State of Oregon have invested millions in infrastructure and wetland mitigation, with the expectation that the area will develop for traded-sector uses.</p>
Salem Renewable Energy and Technology Center	<p>This property has about 48 total acres; 40 of which are certified development ready. It is adjacent to Highway 22 and near Interstate 5. The property is zoned Industrial Business Campus for manufacturing uses. It is owned by the City of Salem.</p>	<p>There are a broad range of sites available adjacent to Panasonic and a PGE substation, with easy access to critical transportation routes.</p>
North Gateway Urban Renewal Area and North Salem	<p>This area has about 140 acres of relatively flat vacant or partially-vacant land. There are a variety of zones and uses throughout the area. It is near a significant transportation route to Portland and features a long-term concentration of industrial and manufacturing businesses.</p>	<p>This area has transportation access and a significant cluster of manufacturing and industrial uses.</p>
McGilchrist Urban Renewal Area	<p>This area is comprised of about 40 acres of relatively flat vacant land. This area has a long term concentration of industrial and manufacturing uses.</p>	<p>This area is the site of future URA and transportation investments and has a concentration of industrial businesses.</p>
Fairview Urban Renewal Area	<p>The Fairview Urban Renewal Area consists of 390 acres of mixed industrial properties, with a range of vacant lots available. There is quick access to Highway 22 and the Salem Airport.</p>	<p>Millions were invested in public infrastructure and wetland mitigation in this area. There is a significant concentration of a broad range of industrial businesses.</p>
West Salem Urban Renewal Area	<p>This area has a variety of lot sizes, zones, and uses, access to Highway 22 and Wallace Road, and a concentration of long term industrial employers.</p>	<p>There is a concentration of long term industrial employers and accessibility in this area.</p>
North Downtown Area	<p>The North Downtown has a variety of lot sizes, zones, and uses, access to downtown Salem, and a concentration of long term industrial employers.</p>	<p>There is a concentration of long term industrial employers in this area.</p>
Salem Airport	<p>The Salem Airport has 80 acres of unconstrained vacant or partially vacant land. It is a cargo, business, aviation technology, and personal airplane node. There is quick transportation access to Interstate 5 and Highway 22 and a concentration of industrial employers.</p>	<p>The airport is a cargo, business, and personal airplane node that generates hundreds of millions in economic benefits for the region. Federal, State, and City investments in infrastructure will continue to support a range of transportation options in the area and support area businesses.</p>

Policy Changes and Implementations

The Economic Opportunities Analysis concluded that Salem has a deficit of 271 acres of land designated for commercial uses. Salem has more industrial land than is expected to develop over the 2015 to 2035 period. Much of that industrial land is high value industrial land where the City has made substantial investments in infrastructure. The following are recommendations from the Advisory Committee for revisions to Salem's Comprehensive Plan policies and Implementation Strategies to address these issues.

Salem's deficit of commercial land will require a variety of approaches to resolve.

Some commercial land need may be addressed through targeted conversion of industrial land that is not well-suited for future industrial uses. Commercial land need may also be addressed through rezoning land in residential areas to create appropriately scaled neighborhood shopping areas. Redevelopment will play an important role in addressing the commercial land deficit.

Salem's industrial land base is unique within the Willamette Valley.

Few cities in Oregon have an industrial land base with the employment potential of Salem's industrial land.

Commercial Implementation Strategies

Addressing Salem's deficit of land for commercial uses will require increasing land available for commercial development.

Implementation Measure 1.1: Identify targeted areas for potential conversion to commercial uses, such as office uses, businesses that need flex space, and other types of employment with wages near-to or higher-than the State's average wage. The areas targeted for conversion should be ones where commercial uses are impinging on industrial activity and areas that are less well-suited for future industrial uses. These changes should be implemented to allow continuation of existing industrial uses.

Implementation Measure 1.2: Establish one or more neighborhood or convenience shopping and service centers in West Salem, to provide retail and other services to people living in West Salem.

Implementation Measure 1.3: Establish one or more neighborhood or convenience shopping and service centers in residential areas, especially in developing residential areas.

Implementation Measure 1.4: Make the mixed-use zone and overlays simpler and easier to use, possibly reducing the number of mixed-use zones or overlays and making the design standards simpler and more consistent across mixed-use areas.

Industrial Implementation Strategies and Revised Goals

These strategies and goals will help the City manage the base of high value industrial land. The Advisory Committee recommends that the City make changes to the City's existing Comprehensive Planning policies for management of the City's industrial land.

Revised Policy 1: Industrial Land Inventory. Maintain a long-term (20 year) industrial land inventory that provides a full range of small, medium, and large parcel sizes and locations to sustain a competitive market

EMPLOYMENT LAND POLICY CHANGES, IMPLEMENTATION STRATEGIES

for industrial sites. Maintaining a long-term supply of industrial land will require identifying and preserving key high value industrial land, especially areas where the City has made substantial investments in infrastructure. High value industrial land has the following characteristics: it is designated for industrial uses, is in flat parcels, is most frequently in large parcels at least 10 acres in size, is located within an industrial district, has direct access to a state highway or I-5, and is serviced or has plans to be serviced with water and wastewater infrastructure.

New Policy: Industrial Land Inventory. Identify areas that may be appropriate for converting from industrial to commercial or other non-industrial uses over the long-term. The characteristics of industrial land that may be appropriate for conversion to commercial or other non-industrial uses include some or all of the following: (1) located outside of industrial areas or isolated from other industrial uses; (2) surrounded by incompatible uses (such as housing); (3) located adjacent to properties that have converted to commercial uses; (4) have limited or no access to major roads (such as arterial streets, collector streets, or highways); or (5) lacks rail access.

New Policy: Short-term industrial land supply. Ensure a sufficient short-term supply of serviced industrial land that is suitable for construction within one year of application for a building permit or request for service extension.

New Policy: Industrial Land Inventory. Monitor and report on the supply of industrial land and conversions to commercial uses on an annual basis, to ensure a long-term and short-term supply of industrial land.

Several of the Implementation Strategies for managing industrial land in Salem echo the suggested changes to Salem's Industrial land policies (and are not presented in this document).

Implementation Measure 2.1: Identify industrial areas to preserve for large-scale industrial uses such as (but not exclusive to) the target industries. These areas may be in single large parcels or a collection of mid-sized adjacent parcels, preferably with two or fewer owners.

Economic Development Policies

The Advisory Committee recommends revisions to existing Economic Development Policy 3, which provides a list of actions that the City should take to promote economic development. City staff should incorporate these and other appropriate actions into a strategic plan for economic development.

Revised Policy 3: Economic Development Functions. The Community Development and Urban Development Departments should work together to develop an economic development strategic plan. The plan should list strategies and actions that the City will take over the next one to five years to implement the City's economic development vision. Each action will identify the lead entity responsible for the action, the resources necessary for the action, and a target timeline for the action.

Salem should identify key industrial areas for long-term preservation where public infrastructure investments have been made or are planned.

High value industrial land in Urban Renewal Areas, such as McGilchrist, Fairview, and North Gateway, are the types of areas that Salem should preserve for future industrial uses.

Salem should develop an economic development strategic plan that identifies specific actions, including resources and a schedule to implement the actions.

Acknowledgments

ECONorthwest and the City of Salem thank the many people who helped develop the Salem Housing Needs Analysis and Economic Opportunities Analysis.

Advisory Committee

Rich Fry, Salem Planning Commission, Committee Chair
Sheronne Blasi, Salem Planning Commission, Committee Vice Chair
Curt Arthur, Sperry Van Ness
Warren Bednarz, Salem City Council, Ward 7
Daniel Benjamin, North Lancaster Neighborhood Association (NOLA)
Chuck Bennett, Salem City Councilor, Ward 1
Steve Dickey, Salem-Keizer Transit
Anne Easterly, US Bank
Mike Erdmann, Marion-Polk Home Builders Association
Larry Goodreau, Willamette Community Bank
Mark Grenz, Multi-Tech Engineering Services
Travis Henry, Wildwood / Mahonia
Levi Herrera, Mano-a-Mano Family Center
Diane Lace, Catholic Community Services
Jeff Leach, Southeast Salem Neighborhood Association (SESNA)
Jim Lewis, Association of Salem Realtors, Salem Planning Commission
Eric Olsen, Olsen Design and Development
Alan Sorem, Saalfeld Griggs
Jason Tokarski, Mountain West Investment Corporation
Andrew Wilch, Salem Housing Authority

Regional Partners

Nate Brown, Community Development Director, Keizer
Austin McGuigan, Planning Director, Polk County
Brandon Reich, Senior Planner, Marion County

State of Oregon

Gordon Howard, Urban Planning Specialist, DLCD
Tom Hogue, Economic Development Planning Specialist, DLCD
Angela Lazarean, Regional Representative, DLCD

City of Salem

Community Development Department:

Lisa Anderson-Ogilvie, Urban Planning Administrator
Glenn Gross, Director
Eunice Kim, Planner II

Urban Development Department:

Tory Banford, Management Analyst
Doug Rux, Assistant Director

ECONorthwest prepared this report and is solely responsible for its content.

ECONorthwest gratefully acknowledges the substantial assistance provided by staff at the City of Salem. Many other agencies and staff contributed to other research that this report relied on. For more information about this report, please contact:

Lisa Anderson-Ogilvie, Urban Planning Administrator
City of Salem, Community Development Dept.
555 Liberty St SE, Room 305
Salem, OR 97301
503-540-2381

Beth Goodman, Planner
ECONorthwest
222 SW Columbia, Suite 1600
Portland, OR 97201
503-222-6060

RESOLUTION NO. 2016-05

A RESOLUTION ACCEPTING THE SALEM HOUSING NEEDS ANALYSIS

Whereas, the City of Salem undertook a Salem Housing Needs Analysis to inform land use policy decisions and develop strategies to meet its housing needs over the next 20 years; and

Whereas, extensive public engagement activities were conducted to solicit input on the study, including the formation of a 21-member advisory committee of stakeholders; and

Whereas, the Salem Housing Needs Analysis was completed in December, 2014; and

Whereas, the Salem Housing Needs Analysis determined that Salem's portion of the Urban Growth Boundary has a deficit of 207 acres of land designated for multifamily housing and a surplus of 1,975 acres of land designated for single-family housing; and

Whereas, the City of Salem cannot adopt the Salem Housing Needs Analysis as a component of or support document for the Salem Area Comprehensive Plan without addressing the deficit of land for multifamily housing; and

Whereas, the Salem Housing Needs Analysis provides recommendations for addressing the deficit of land for multifamily housing; and

Whereas, the City Council directed staff at its October 12, 2015 work session to prepare a work plan to advance recommendations of the Salem Housing Needs Analysis to address the deficit; and

Whereas, the City of Salem can accept the Salem Housing Needs Analysis to provide guidance in addressing the deficit of land for multifamily housing; and

Whereas, acceptance of the Salem Housing Needs Analysis does not constitute adoption as a component of or support document for the Salem Area Comprehensive Plan; and

Whereas, the City of Salem may adopt the Salem Housing Needs Analysis at a later date;

NOW, THEREFORE, THE CITY COUNCIL OF THE CITY OF SALEM, OREGON,
RESOLVES AS FOLLOWS:

Section 1. The City Council hereby accepts the Salem Housing Needs Analysis.

Section 2. This resolution is effective upon adoption.

ADOPTED by the City Council this ____ day of _____, 2016.

ATTEST:

City Recorder

Approved by City Attorney: _____

A handwritten signature in black ink, appearing to be 'DJA', is written over the line for the City Attorney's approval.

Checked by: