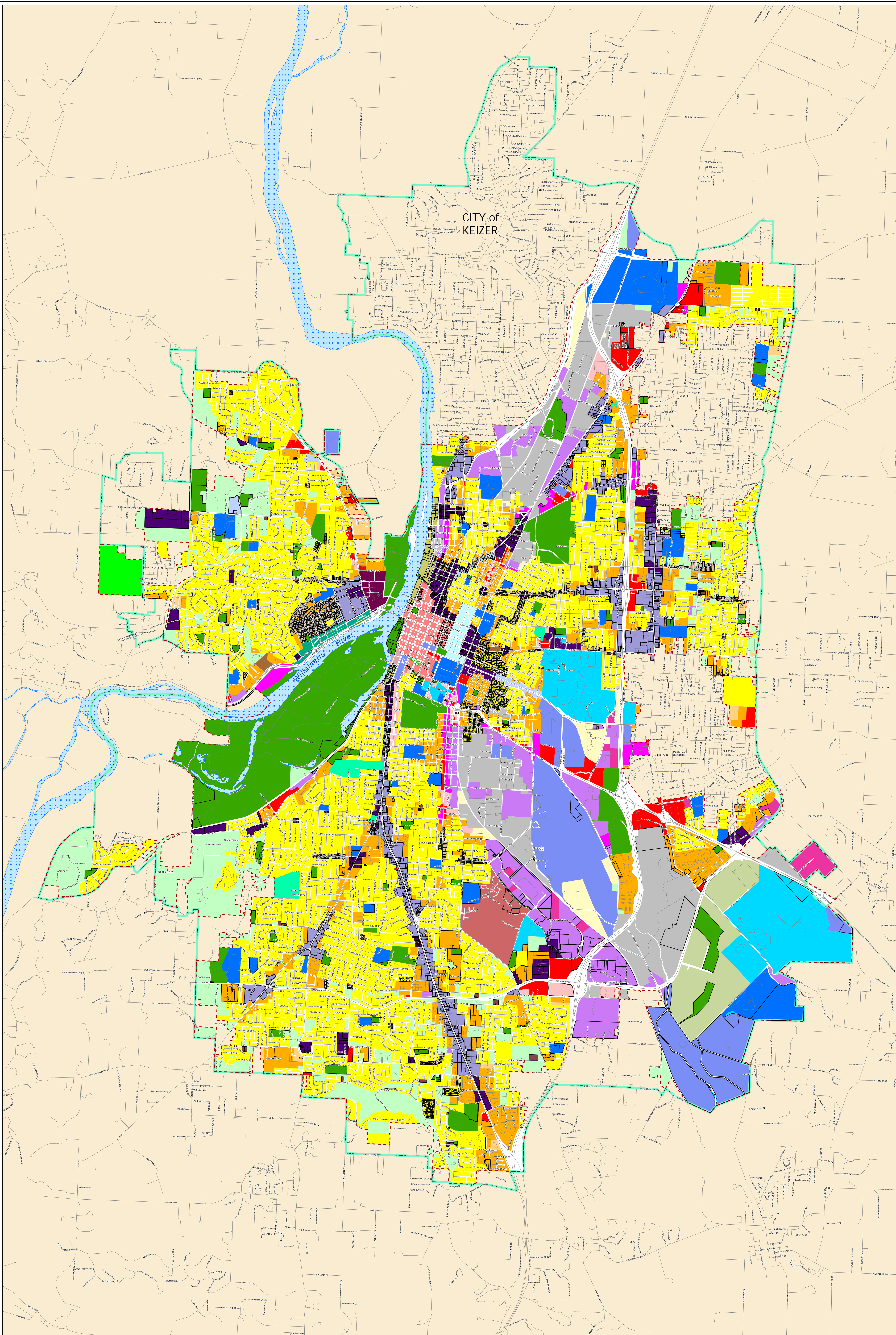


Proposed Salem Zoning

City of Salem
Community Development Department

APRIL
2021

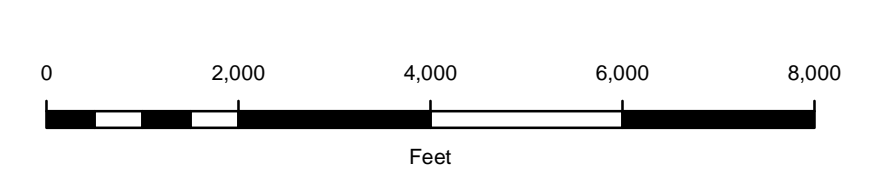


Key

Proposed Salem Zoning Designation

- CB - Central Business District
 - CG - General Commercial
 - CO - Commercial Office
 - CR - Retail Commercial
 - EC - Employment Center
 - EFU - Exclusive Farm Use
 - ESMU - Edgewater/Second Street Mixed-Use Corridor
 - FMU - Fairview Mixed-Use
 - IBC - Industrial Business Campus
 - IC - Industrial Commercial
 - IG - General Industrial
 - II - Intensive Industrial
 - IP - Industrial Park
 - MU-I - Mixed Use-I
 - MU-II - Mixed Use-II
 - MU-III - Mixed Use-III
 - MU-R - Mixed Use - Riverfront
 - NH - Neighborhood Hub
 - PA - Public Amusement
 - PC - Public-Private Cemetery
 - PE - Public-Private Education
 - PH - Public Health
 - PM - Capitol Mall
 - PS - Public Service
 - R4 - Residential 4
 - RA - Residential Agriculture
 - RH - Multiple Family High-Rise Residential
 - RM1 - Multiple Family Residential 1
 - RM2 - Multiple Family Residential 2
 - RS - Single Family Residential
 - SCI - Second Street Craft Industrial Corridor
 - SWMU - South Waterfront Mixed-Use
 - WSCB - West Salem Central Business District
- Proposed Zoning Change Areas
 - Urban Growth Boundary
 - Salem City Limits
 - Outside Salem City Limits
 - Street Centerlines
 - Willamette River

Overlay Zones are not shown on this map



This product is provided as is, without warranty. In no event is the City of Salem liable for damages from the use of this product. This product is subject to license and copyright limitations and further distribution or resale is prohibited.