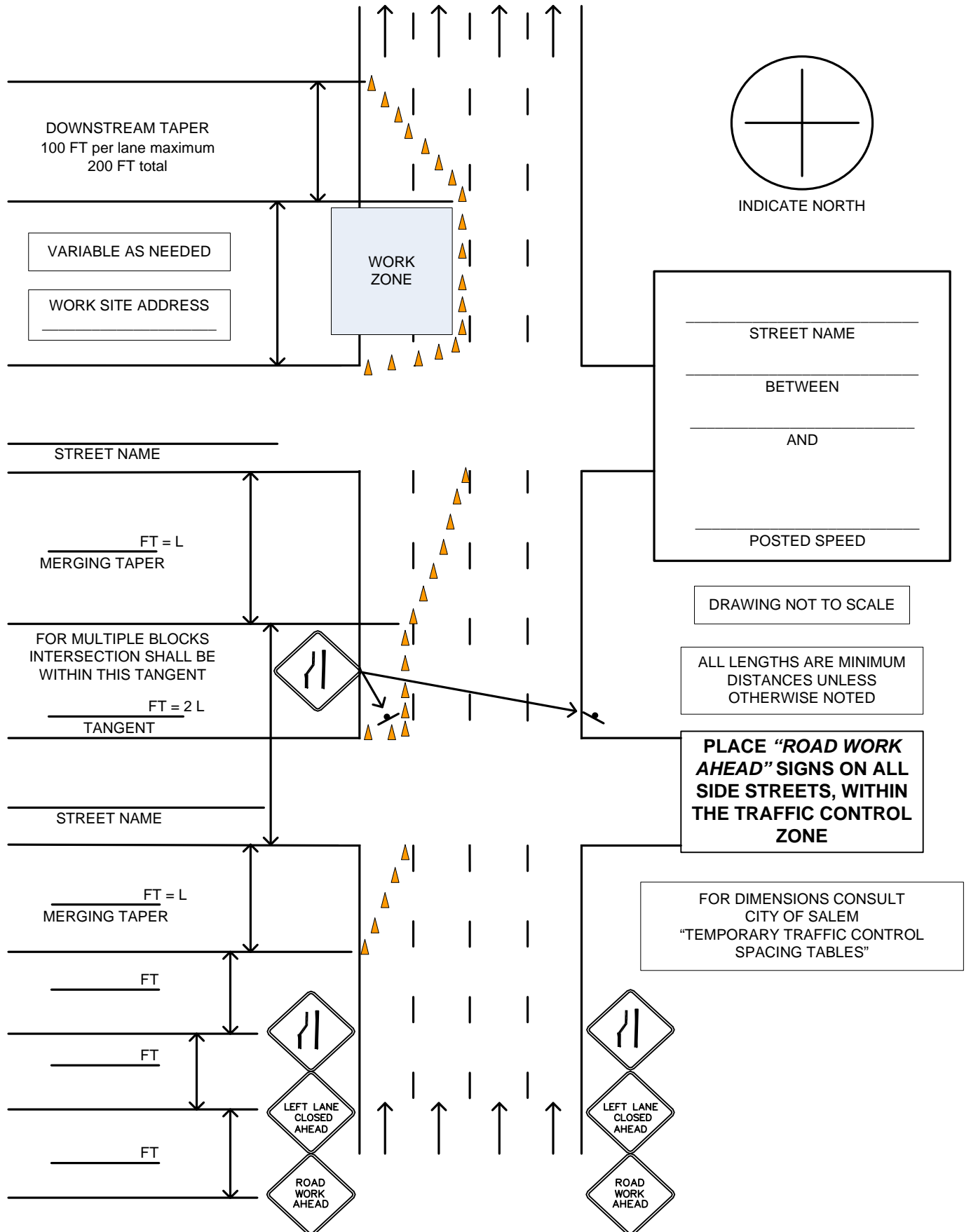


# DOUBLE LANE CLOSURE LEFT LANES, ONE-WAY STREET 4 LANE STREET WITH INTERSECTIONS



Sight distance shall be maintained at all public and private intersections and driveways. If sight distance is not achievable, prior approval by the City Traffic Engineer is required to either restrict turn movements or use flaggers and shall include coordination with the affected property/business owner(s).