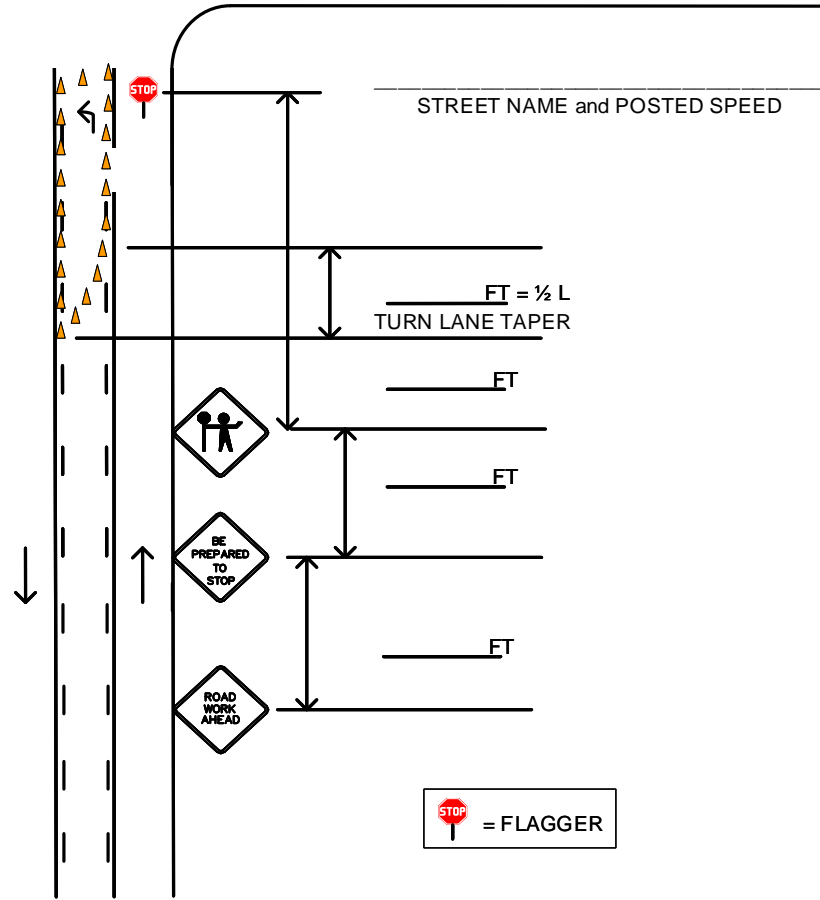
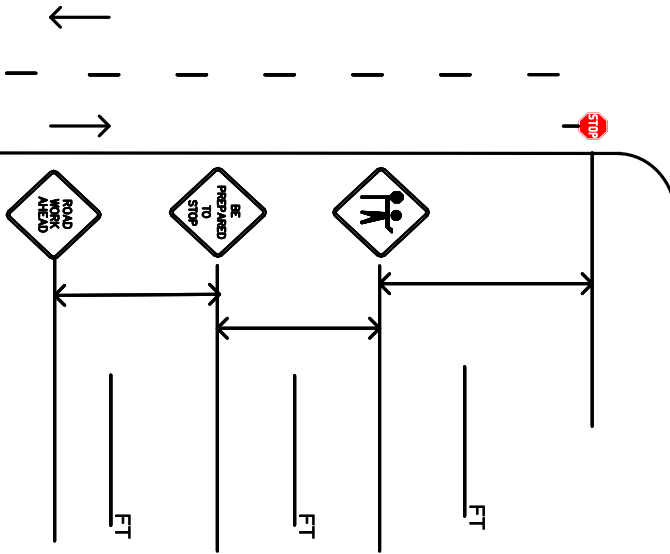
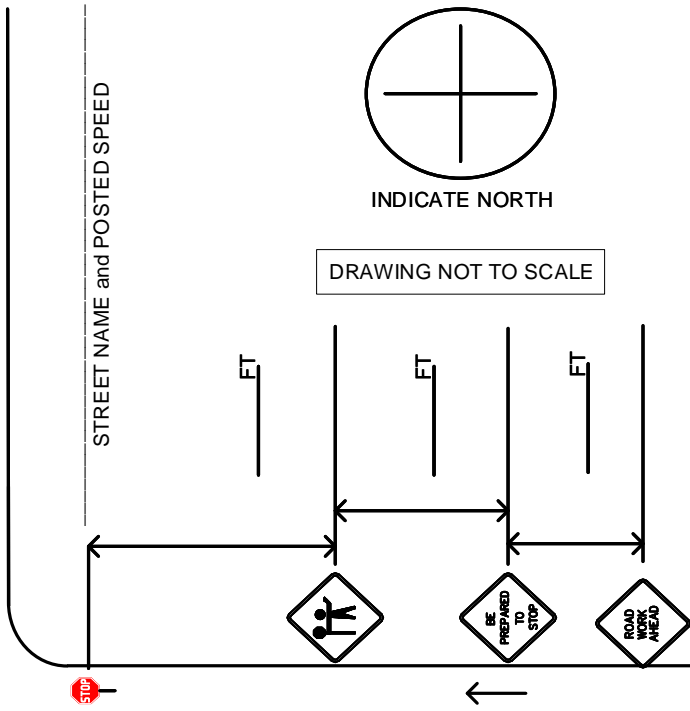
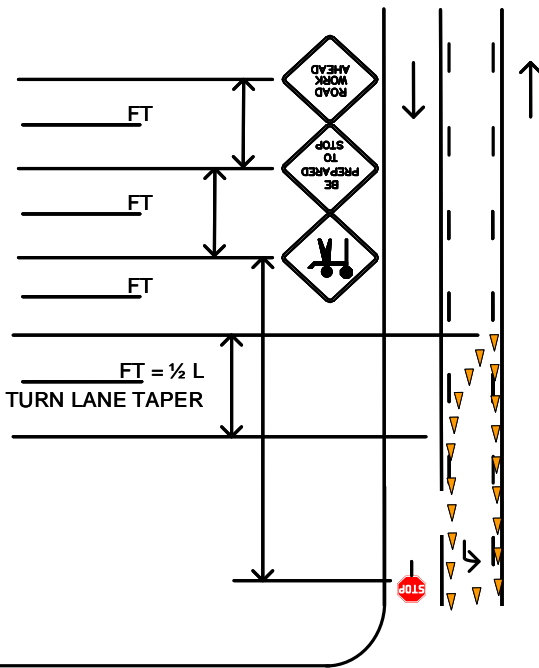


# FLAGGING AT INTERSECTION 2 LANE STREET – 3 LANE STREET

**LAW REQUIRES TRAFFIC SIGNALS TO BE SCHEDULED FOR TURN OFF OR STOP SIGNS TO BE COVERED TO FLAG INTERSECTION.**



FOR DIMENSIONS CONSULT CITY OF SALEM "TEMPORARY TRAFFIC CONTROL SPACING TABLES"

PLACE SIGNS ON ALL SIDE STREETS, WITHIN THE TRAFFIC CONTROL ZONE

ALL LENGTHS ARE MINIMUM DISTANCES UNLESS OTHERWISE NOTED

= FLAGGER

Sight distance shall be maintained at all public and private intersections and driveways. If sight distance is not achievable, prior approval by the City Traffic Engineer is required to either restrict turn movements or use flaggers and shall include coordination with the affected property/business owner(s).