

# CONGESTION RELIEF TASK FORCE

A Technical Review of Transportation Infrastructure Options



April 20, 2018

## MEETING GOALS

1. **Agenda Review and Meeting #1 Recap** ▶ 7:00
2. **Future Transportation Conditions** ▶ 7:10
3. **Transportation Solution Ideas** ▶ 7:20  
Weigh-in on: Summary List of Ideas
4. **Evaluation Criteria** ▶ 8:10  
Agreement on: Evaluation Criteria
5. **Wrap-up and Next Steps** ▶ 8:25

DATE	MEETING TOPIC
Feb. 23	<b>1. Project Introduction</b> a. Task Force goals and process b. Key transportation issues c. Current policies and constraints
April 20	<b>2. Future Conditions, Transportation Ideas, Evaluation Criteria</b>
May 4	<b>3. Optional meeting</b>
May 18	<b>4. Transportation Idea Results:</b> Tier 1 Screening (choose 3)
June 29	<b>5. Transportation Idea Results:</b> Tier 2 Screening
July	<b>6. Recommendations</b>



No Scale

**AM Peak Hour Congestion  
Future Queues**

- Heavy
- Moderate
- Light
- Future Queues



RIVERBEND RD

WALLACE RD NW

221

ORCHARD HEIGHTS RD NW

PARKWAY DR NW

GLEN CREEK RD NW

TAGGART DR

PATTERSON ST NW

KINGWOOD AV NW

ROSEMONT AV NW

EDGEWATER ST NW

22



No Scale

**PM Peak Hour Congestion Future Queues**

- █ - Heavy
- █ - Moderate
- █ - Light
- Future Queues

RIVER RD

SALEM PKWY

LOCUST ST

HICKORY ST

PINE ST

CHERRY AV

BROADWAY ST

CHURCH ST

99E

MADISON ST

JEFFERSON ST

NORWAY ST

SHIPPING ST

MARKET ST

HOOD ST

FAIRGROUNDS RD NE

Willamette River

FRONT ST

COMMERCIAL ST

LIBERTY ST

4TH ST

HIGH ST

5TH ST

CHURCH ST

COTTAGE ST

WINTER ST

SUMMER ST

CAPITOL ST

22

99E

22

99E

22

99E

22

99E

22

99E

22

99E

22

99E

22

COMMERCIAL ST

LIBERTY ST

MISSION ST

STATE ST

FERRY ST

TRADE ST

COURT ST

CENTER ST

MARION ST

UNION ST

12TH ST

13TH ST

14TH ST

17TH ST

City Hall

Oregon State Capitol

# Idea Goal

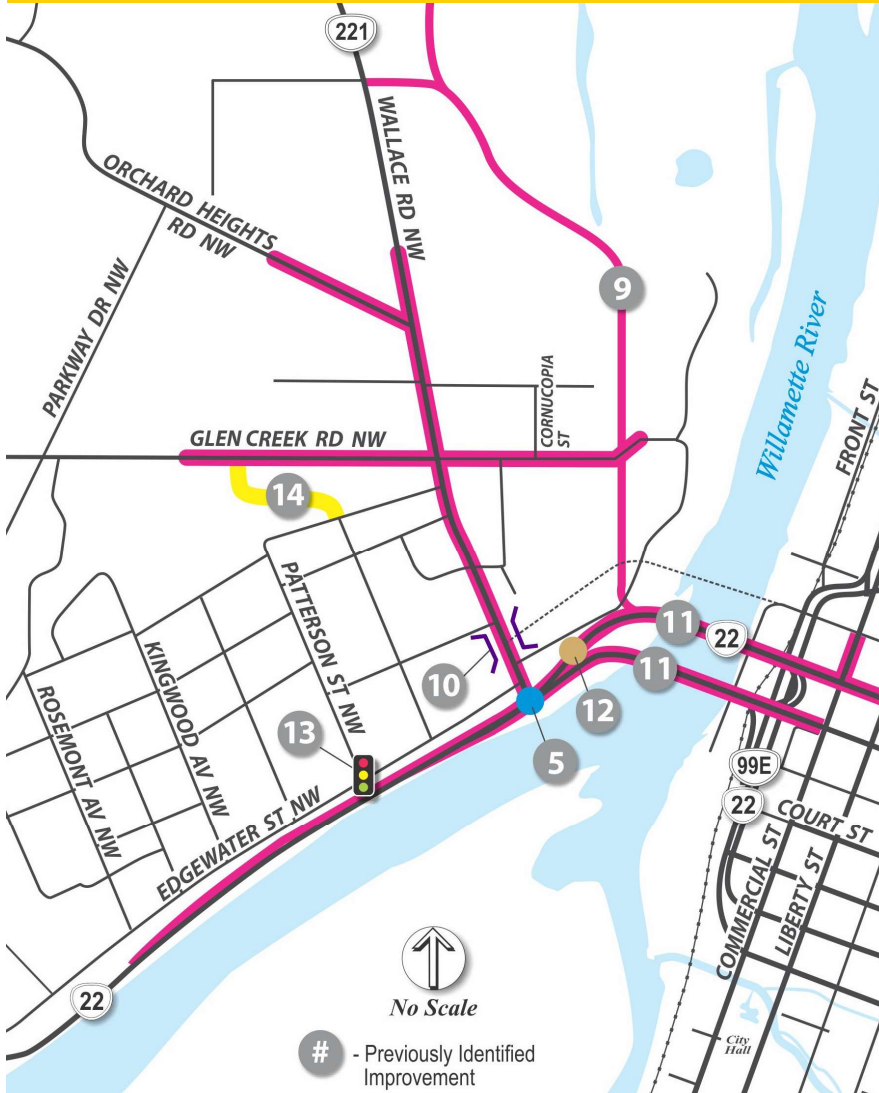
**GOAL:** Improving vehicular mobility and identifying ways to reduce vehicular congestion within the study area.

- Develop ideas to reduce traffic congestion and vehicular mobility in the:
  - Short term (within 5 years)
  - Medium term (within 10 years)
  - Long term (longer than 10 years)
- Select the most promising ideas for high-level traffic engineering analysis
- Conduct traffic engineering analysis on three selected ideas that include the following:
  - Estimated immediate improvement in traffic flow, delay, and queuing.
  - Estimated future improvement in traffic flow, delay, and queuing.

**CONGESTION RELIEF TASK FORCE**  
*A Technical Review of Transportation Infrastructure Options*

# Solution Ideas

## Previously Identified Transportation Ideas



	Ideas
5	Wallace Rd/Edgewater St: <ul style="list-style-type: none"> <li>• Add eastbound and westbound lanes on Wallace Rd.</li> <li>• Improve geometry, and</li> <li>• Close Musgrave Ln.</li> </ul>
9	Marine Dr. connector roadway
10	Multimodal grade-separated crossing at 2 <sup>nd</sup> St/Wallace Rd
11	Marion Street Bridge increase to six westbound lanes and provide Marine Dr off-ramp
	Center St Bridge widen to five eastbound lanes
12	Wallace Rd improvements: Three ramp lanes and six-lane cross section
13	Signal at Edgewater/Patterson St
14	Murlark Ave. connector roadway to Glen Creek Rd

# Solution Ideas

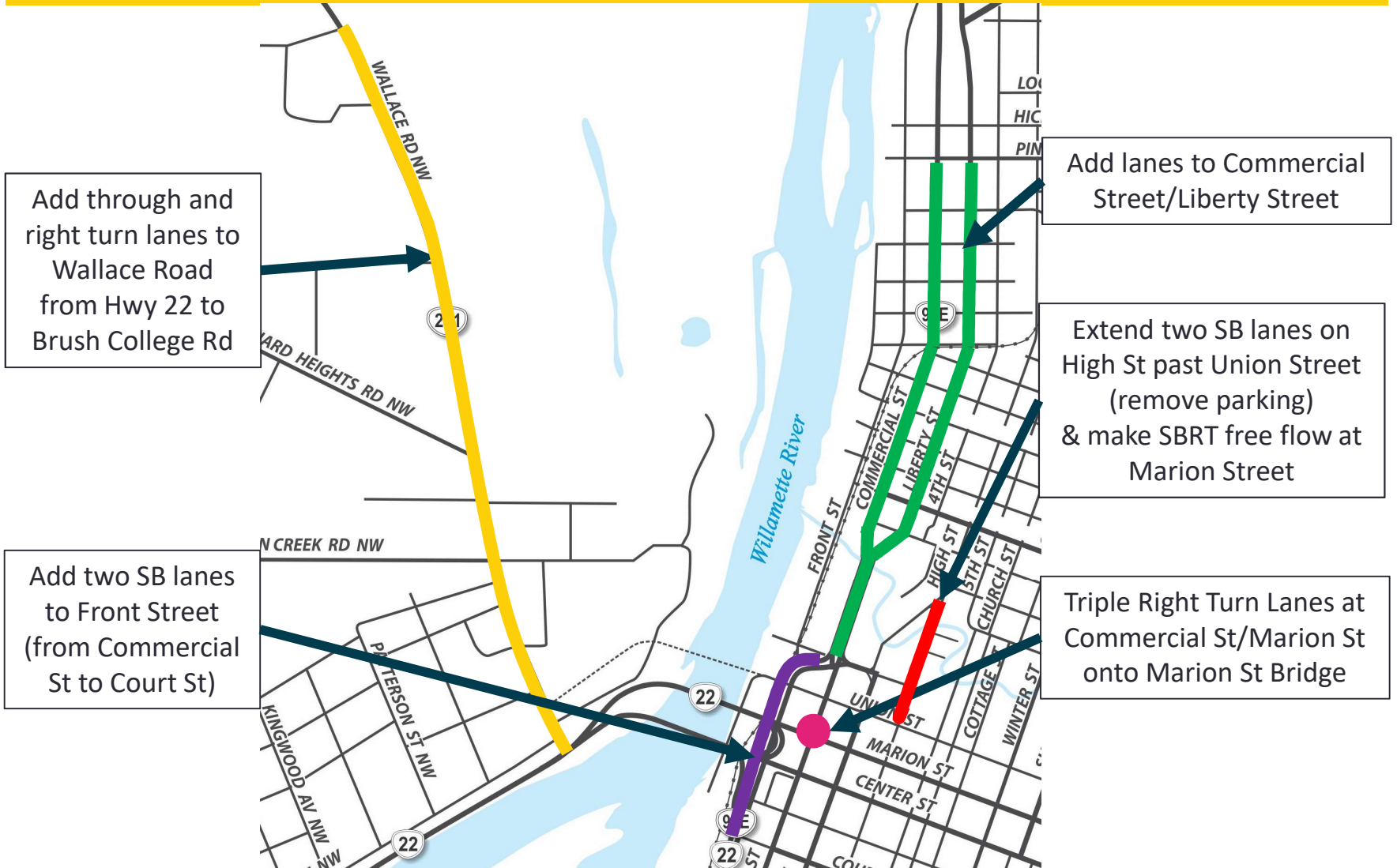
## Previously Identified Transportation Ideas



	Ideas
6	Construct Union St bikeway
7	Widen ramp to two lanes or provide uncontrolled right turn
8	Commercial/Marion St Bridge capacity improvements: <ul style="list-style-type: none"> <li>• Exclusive double right turn lanes</li> </ul> Alternatively <ul style="list-style-type: none"> <li>• Uncontrolled right turn ramp onto Marion St Bridge over park, no pedestrian crossing</li> </ul>
9	Widen Front Street to a Minor Arterial standard.

# Solution Ideas

## Added Lanes



# Solution Ideas

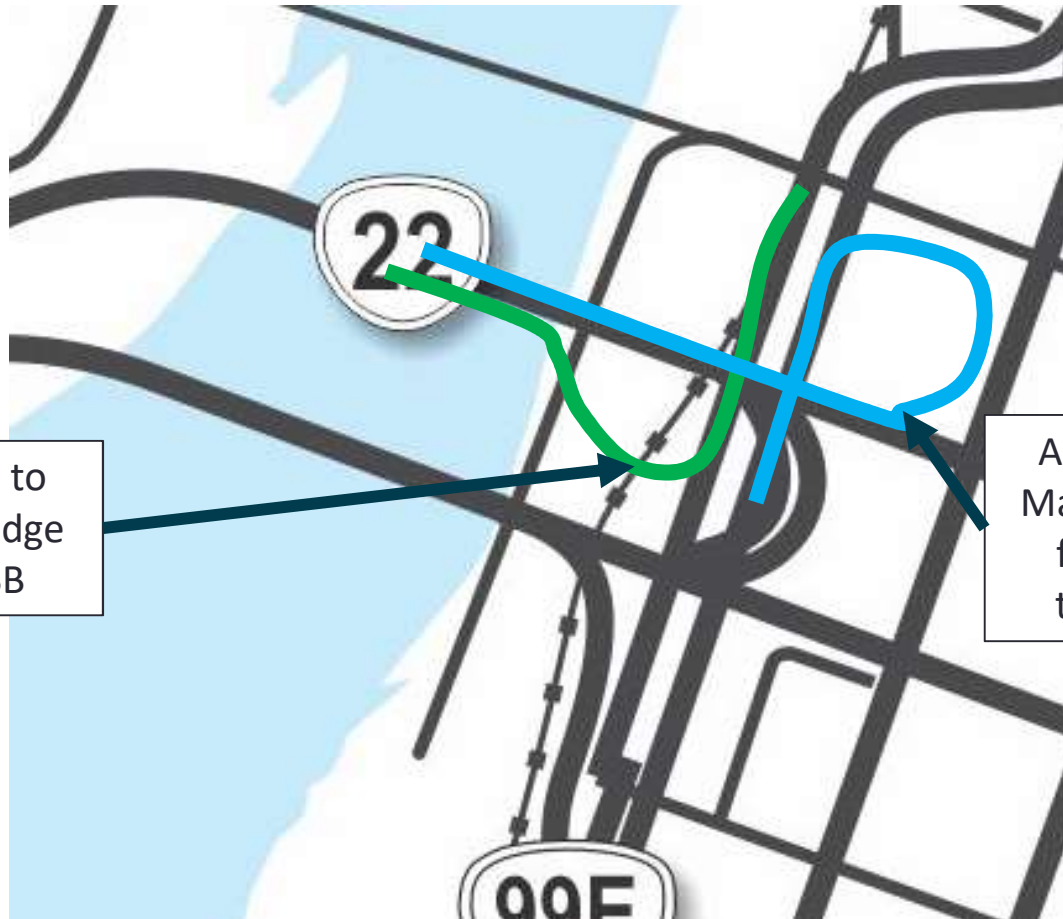
## Ramps





# Solution Ideas

## Ramps

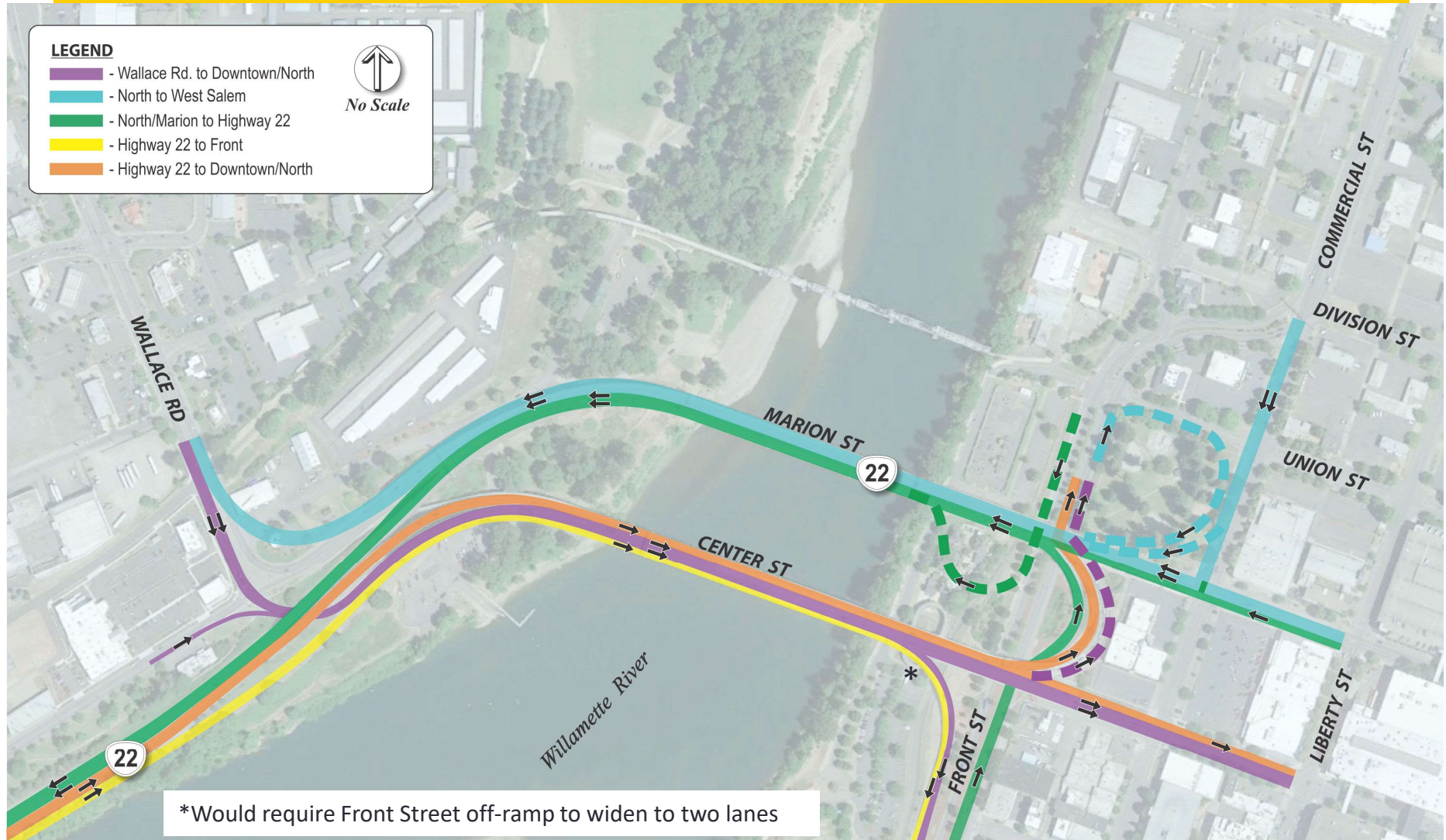


Add an on-ramp to Marion Street Bridge from Front St SB

Add an on-ramp to Marion Street Bridge from Front St NB through the park

# Solution Ideas

## Remove Weaving and Lane Changes on Bridges



# Solution Ideas

## Improved Operations

- Improved Signal Timing and Synchronization
  - Marion Street and Center Street
  - Wallace Road
  - Commercial Street
  
- Pedestrian Crossing Modifications
  - Increase Pedestrian Delays during peak periods (longer cycle lengths)
  - Add grade-separated crossing of Front Street between downtown and Riverfront Park
  
- Remove Traffic Signals
  - Commercial Street/Union Street
  - Edgewater Road/Wallace Road

# Solution Ideas

## Others

- Improve Signage
- Allow motor vehicle traffic on Union Street Bridge during peak congestion
- Add Bus Pull-out Lanes
- Reversible travel lanes
- Open Musgrave Avenue through Wallace Marine Park to Glen Creek Road

# Solution Ideas

## Travel Demand Management (TDM)

### Transit

- Increase bus frequency to west Salem
- Downtown circulator
- Expanded Park and Ride services
- Dedicated transit/carpool lanes

### Other

- Improve facilities for bicycles and pedestrians
- Discourage future development in west Salem
- Encourage high-density land use in downtown
- Incentives to change travel behavior: telecommuting, staggered work hours
- Implement tolls and increase gas tax and parking costs in downtown

# CONGESTION RELIEF TASK FORCE

*A Technical Review of Transportation Infrastructure Options*



## EVALUATION CRITERIA

**Primary: Relieve congestion in the project area and advise the City on policies and actions to improve traffic flow.**

**Secondary:**

Transportation

- Safety
- On-street parking
- Pedestrian facilities
- Bicycle facilities
- Transit facilities
- Property impacts/acquisition
- Emergency vehicle access and response time
- Grade-separated facilities
- Medians/turning/driveway limitations

Other

- Parks
- Landscaping/visual impacts
- Community livability
- Area economic vitality
- Historical resources
- Cultural resources
- Consistency with city/state design standards
- Consistency with city/state adopted plans
- Project costs